



WR-12 Waveguide 6x Active Frequency Multiplier,
E-Band, 60 GHz to 90 GHz Output Frequency,
+20 dBm Pout, Input SMA, UG-387/U Flange

Waveguide Frequency Multipliers Technical Data

PE88X2025

Features

- WR-12 Waveguide 6x Active Frequency Multiplier with Integrated Heatsink
- Output Frequency 60 GHz to 90 GHz, E Band
- Input Frequency 10 GHz to 15 GHz
- Pout +20 dBm typ
- Bias Voltage Range +6 Vdc to +8 Vdc
- DC current 575 mA typ
- 50 Ohm Design
- Input RF Connector SMA Female
- Output Waveguide WR-12 with UG-387/U flange
- Solder Pins for DC Bias Voltage and Ground
- Operational Temperature Range -40°C to +80°C
- Rugged and Compact Aluminum Gold Plated Package Design

Applications

- Test & Measurement
- Military Electronic Systems
- Military & Commercial Communications
- Research & Development

Description

The PE88X2025 is a WR-12 Waveguide 6x Active Frequency Multiplier that covers the full E frequency band from 60 GHz to 90 GHz with an input frequency band from 10 GHz to 15 GHz. Typical performance for the 50 ohm design includes +3 dBm input power, +20 dBm output power, and -15 dBc harmonics. Maximum input power (CW) is +10 dBm, and DC bias is +6V at 240 mA typ. The rugged and small size aluminum package design is gold plated and supports an SMA female connector for the RF input port and a UG-387/U waveguide flange pattern at the RF output port. Solder pins are used for DC bias voltage and ground. The module operates across a wide temperature range from of -40°C to +80°C maximum.

Electrical Specifications@ +25°C

Description	Minimum	Typical	Maximum	Units
Input Frequency Range	10		15	GHz
Output Frequency Range	60		90	GHz
Input Power	1	3	10	dBm
Output Power		20		dBm
DC Voltage	5	6	8	Volts
DC Current		231		mA
Input VSWR		2.5:1		
Harmonics		-15		dBc

Click the following link (or enter part number in "SEARCH" on website) to obtain additional part information including price, inventory and certifications: [WR-12 Waveguide 6x Active Frequency Multiplier, E-Band, 60 GHz to 90 GHz Output Frequency, +20 dBm Pout, Input SMA, UG-387/U Flange PE88X2025](#)



WR-12 Waveguide 6x Active Frequency Multiplier,
E-Band, 60 GHz to 90 GHz Output Frequency,
+20 dBm Pout, Input SMA, UG-387/U Flange

Waveguide Frequency Multipliers Technical Data

PE88X2025

Biasing Up and Power Down Procedure

Biasing Up Procedure	
Step 1	Connect Ground Pin
Step 2	Apply DC Supply Voltage
Step 3	Turn ON RF input
Power Down Procedure	
Step 1	Turn OFF RF input
Step 2	Turn OFF DC Supply Voltage
Step 3	Remove Ground

Electrical Specification Notes:

- 1.) DC Supply must be able to source at least 0.5A DC at startup
- 2.) Open and short circuit loads are not recommended at the multiplier output.
- 3.) Ensure proper 50 Ohm load before turning the multiplier "ON".
- 4.) Do not put any foreign objects inside the waveguide. The warranty will be voided.

Mechanical Specifications

Size

Length	1.673 in [42.49 mm]
Width	1.673 in [42.49 mm]
Height	1.704 in [43.28 mm]
Weight	0.2 lbs [90.72 g]

Body Material and Plating

Body Material and Plating	Aluminum
Finish	GLD
Input Port	SMA Female
Output Port	WR-12 Waveguide with UG-387/U Flange
DC Bias	Feed-thru Pin

Environmental Specifications

Temperature

Operating Range	-40 to 80 deg C
Storage Range	-40 to 100 deg C

Compliance Certifications (see [product page](#) for current document)

Plotted and Other Data

Notes:

Click the following link (or enter part number in "SEARCH" on website) to obtain additional part information including price, inventory and certifications: [WR-12 Waveguide 6x Active Frequency Multiplier, E-Band, 60 GHz to 90 GHz Output Frequency, +20 dBm Pout, Input SMA, UG-387/U Flange PE88X2025](#)



WR-12 Waveguide 6x Active Frequency Multiplier,
E-Band, 60 GHz to 90 GHz Output Frequency,
+20 dBm Pout, Input SMA, UG-387/U Flange

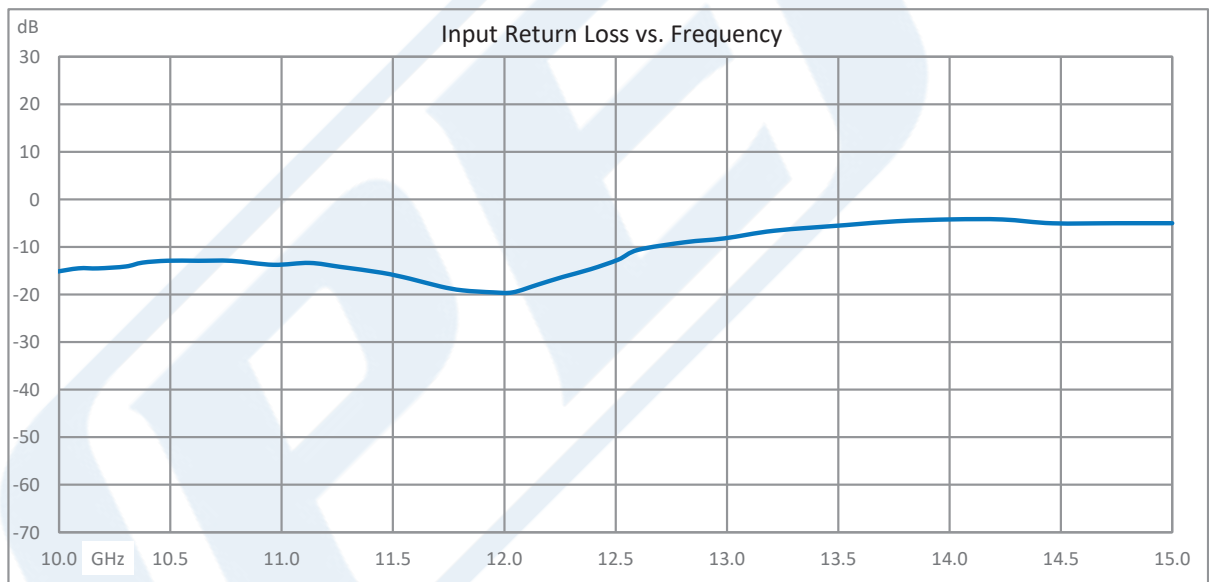
Waveguide Frequency Multipliers Technical Data

PE88X2025

Absolute Maximum Rating

Parameter	Rating
Operating Temperature	-40°C to +80°C
Storage Temperature	-40°C to +100°C
Total Power Dissipation	4W
Input Power (CW)	+10dBm
DC Operating Voltage	+12V

Typical Performance Data



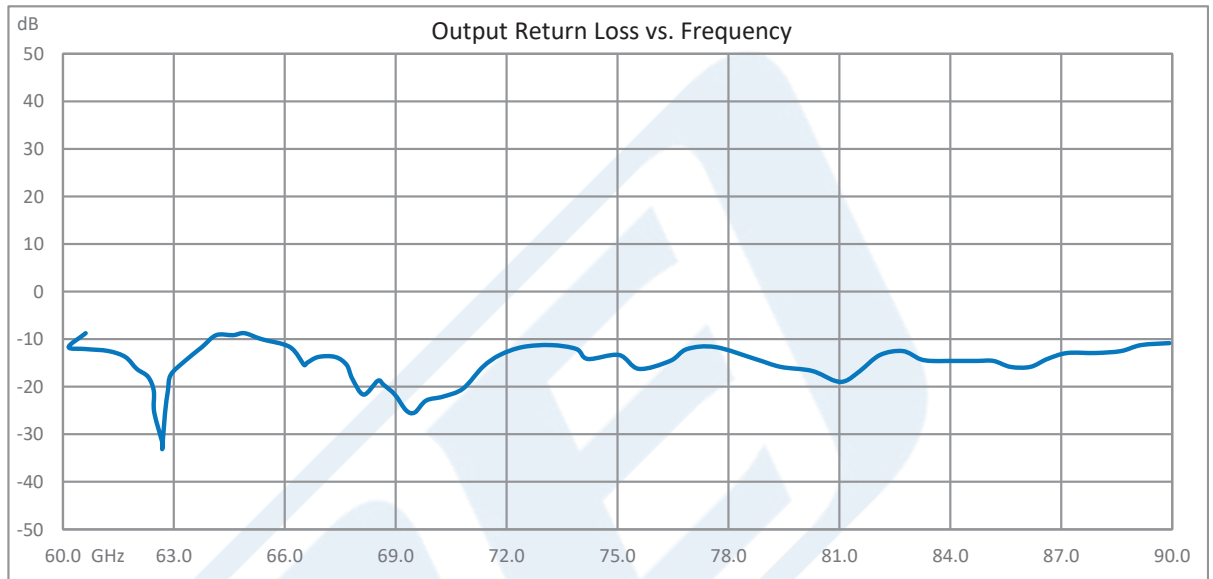
Click the following link (or enter part number in "SEARCH" on website) to obtain additional part information including price, inventory and certifications: [WR-12 Waveguide 6x Active Frequency Multiplier, E-Band, 60 GHz to 90 GHz Output Frequency, +20 dBm Pout, Input SMA, UG-387/U Flange PE88X2025](#)



WR-12 Waveguide 6x Active Frequency Multiplier,
E-Band, 60 GHz to 90 GHz Output Frequency,
+20 dBm Pout, Input SMA, UG-387/U Flange

Waveguide Frequency Multipliers Technical Data

PE88X2025



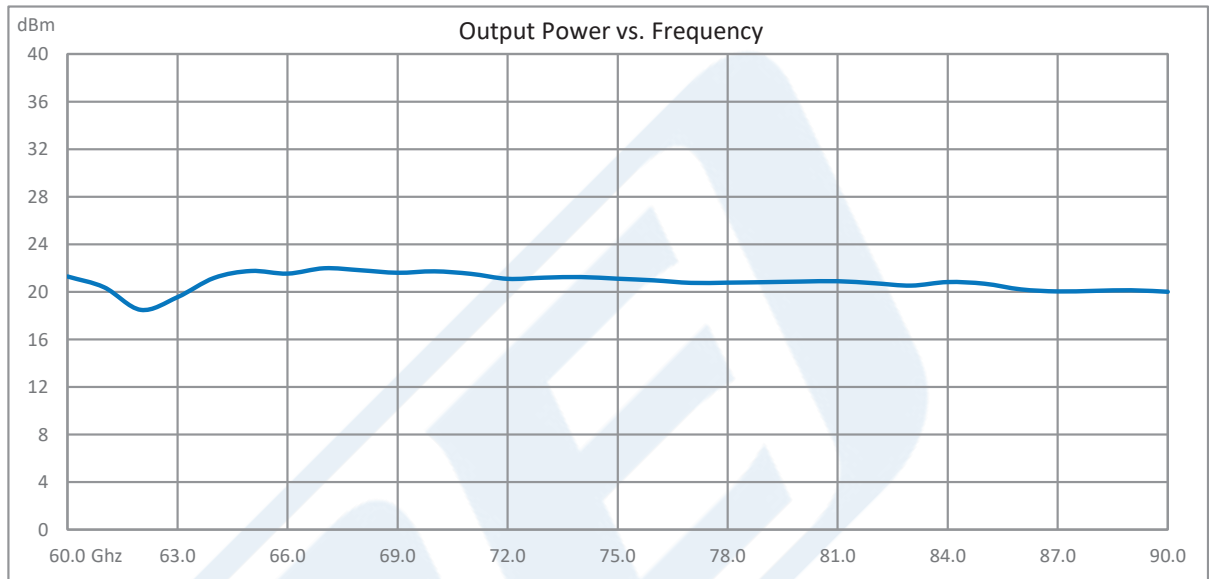
Click the following link (or enter part number in "SEARCH" on website) to obtain additional part information including price, inventory and certifications: [WR-12 Waveguide 6x Active Frequency Multiplier, E-Band, 60 GHz to 90 GHz Output Frequency, +20 dBm Pout, Input SMA, UG-387/U Flange PE88X2025](#)



WR-12 Waveguide 6x Active Frequency Multiplier,
E-Band, 60 GHz to 90 GHz Output Frequency,
+20 dBm Pout, Input SMA, UG-387/U Flange

Waveguide Frequency Multipliers Technical Data

PE88X2025



WR-12 Waveguide 6x Active Frequency Multiplier, E-Band, 60 GHz to 90 GHz Output Frequency, +20 dBm Pout, Input SMA, UG-387/U Flange from Pasternack Enterprises has same day shipment for domestic and International orders. Our RF, microwave and millimeter wave products maintain a 99.4% availability and are part of the broadest selection in the industry.

Click the following link (or enter part number in "SEARCH" on website) to obtain additional part information including price, inventory and certifications: [WR-12 Waveguide 6x Active Frequency Multiplier, E-Band, 60 GHz to 90 GHz Output Frequency, +20 dBm Pout, Input SMA, UG-387/U Flange PE88X2025](https://www.pasternack.com/wr-12-waveguide-6x-frequency-multiplier-w-heatsink-e-band-60-ghz-to-90-ghz-output-frequency-+20-dbm-pout-input-sma-ug-387-u-flange-pe88x2025-p.aspx)

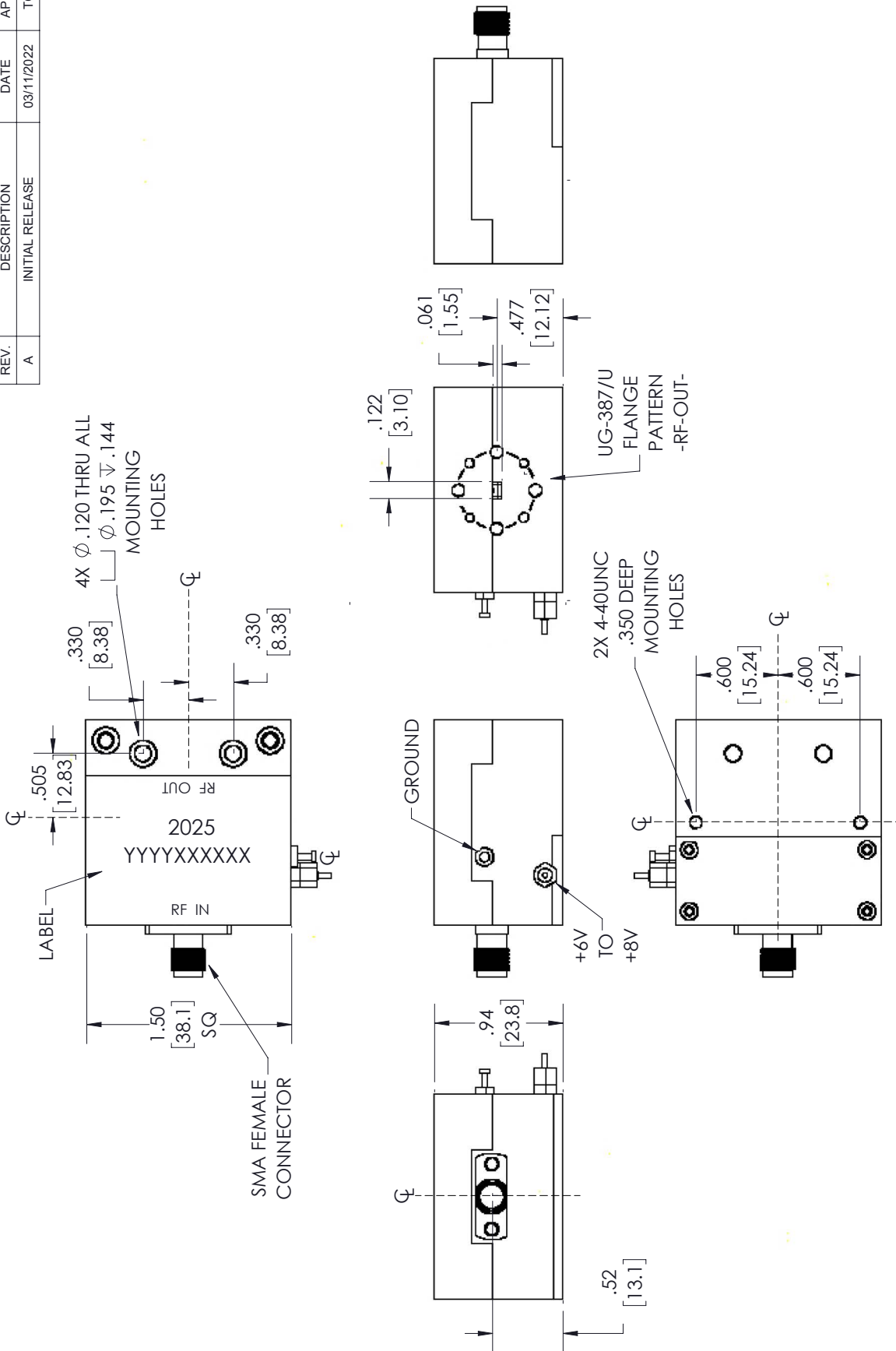
URL: <https://www.pasternack.com/wr-12-waveguide-6x-frequency-multiplier-w-heatsink-e-band-60-ghz-to-90-ghz-output-frequency-+20-dbm-pout-input-sma-ug-387-u-flange-pe88x2025-p.aspx>

The information contained in this document is accurate to the best of our knowledge and representative of the part described herein. It may be necessary to make modifications to the part and/or the documentation of the part, in order to implement improvements. Pasternack reserves the right to make such changes as required. Unless otherwise stated, all specifications are nominal. Pasternack does not make any representation or warranty regarding the suitability of the part described herein for any particular purpose, and Pasternack does not assume any liability arising out of the use of any part or documentation.

PE88X2025 CAD Drawing

WR-12 Waveguide 6x Active Frequency Multiplier, E-Band, 60 GHz to 90 GHz
Output Frequency, +20 dBm Pout, Input SMA, UG-387/U Flange

REVISIONS		
REV.	DESCRIPTION	DATE
A	INITIAL RELEASE	03/11/2022
		APPROVED
		TGALLA



PE PASTERNAK
an INFINITI brand

Pasternack Enterprises, Inc.
P.O. Box 16759, Irvine, CA 92623.
Phone: 1.949.261.1920 | 1.866.727.8376
Fax: 1.949.261.7451
Website: www.pasternack.com
E-mail: sales@pasternack.com

UNLESS OTHERWISE SPECIFIED
LEADING DIMENSIONS ARE INCHES
DIMENSIONS IN [] ARE MILLIMETERS

TOLERANCES:
.X = ±.2 [5.08] FRACTIONS ± 1/32
.XX = ±.02 [.51] ANGLES ± 1°
.XXX = ±.005 [.13] CABLE LENGTH (L) TOLERANCES:
L ≤ 12 [305] = +1 [25] / -0
12 [305] < L ≤ 60 [1524] = +2 [51] / -0
60 [1524] < L ≤ 120 [3048] = +4 [102] / -0
120 [3048] < L ≤ 300 [7620] = +6 [152] / -0
300 [7620] < L = +5%L / -0

ALL DIMENSIONS SHOWN
ARE FOR REFERENCE ONLY.

THIRD-ANGLE PROJECTION

THE INFORMATION AND
DESIGN IN THIS DOCUMENT
IS THE PROPERTY OF
PASTERNAK CORPORATION
ALL RIGHTS RESERVED.

SHEET 1 OF 1
SCALE N/A

SIZE A CAGE CODE A 53919 DRAWN BY BPUCHASKI ITEM NO. PE88X2025
REV A