



WR-28 Bandpass Waveguide Filter With Flange And a Pass Band From 30 GHz to 31 GHz

TECHNICAL DATA SHEET

PE-W28F001

Configuration

Passband	Band Pass
Number of Sections	6
Flange 1	WR-28
Flange 2	WR-28
Passband Frequency Range	30 to 31 GHz

Electrical Specifications (Values at 25°C, sea level)

Description	Minimum	Typical	Maximum	Units
Passband Frequency Range	30	-	31	GHz
Passband Center Frequency		30.5		GHz
Insertion Loss			1.5	dB
Center Frequency Passband Insertion Loss		1.5		dB
Passband VSWR			1.4:1	
Rejection at 29 GHz	40			dB
Rejection at 32 GHz	40			dB

Mechanical Specifications

Size

Length	2.03 in [51.56 mm]
Width	0.75 in [19.05 mm]
Height	0.75 in [19.05 mm]
Weight	0.052 lbs [23.59 g]

Flange 1

Type	WR-28
------	-------

Flange 2

Type	WR-28
------	-------

Compliance Certifications (see [product page](#) for current document)

Plotted and Other Data

Notes:

- Values at 25 °C, sea level

Click the following link (or enter part number in "SEARCH" on website) to obtain additional part information including price, inventory and certifications: [WR-28 Bandpass Waveguide Filter With Flange And a Pass Band From 30 GHz to 31 GHz PE-W28F001](#)

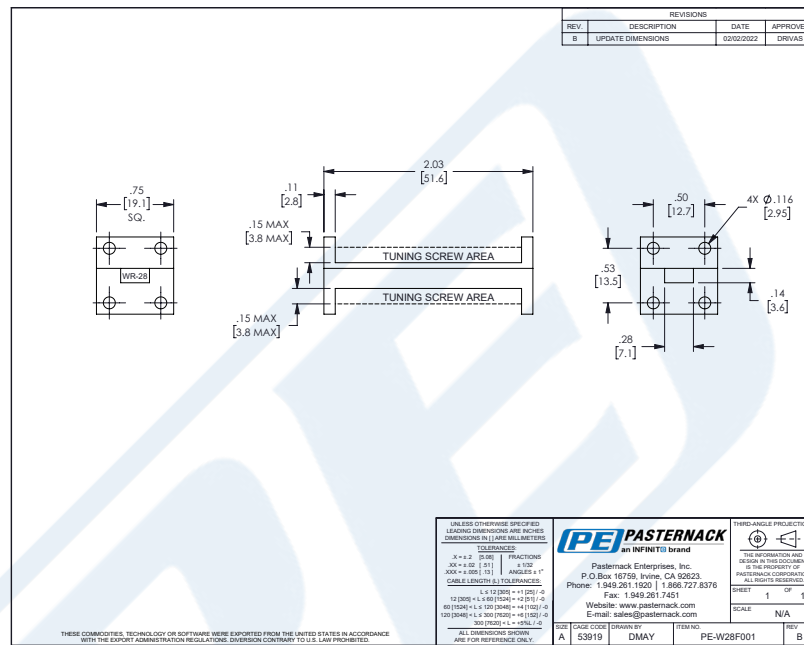


WR-28 Bandpass Waveguide Filter With Flange And a Pass Band From 30 GHz to 31 GHz

TECHNICAL DATA SHEET

PE-W28F001

Outline Drawing



WR-28 Bandpass Waveguide Filter With Flange And a Pass Band From 30 GHz to 31 GHz from Pasternack Enterprises has same day shipment for domestic and International orders. Our RF, microwave and millimeter wave products maintain a 99.4% availability and are part of the broadest selection in the industry.

Click the following link (or enter part number in "SEARCH" on website) to obtain additional part information including price, inventory and certifications: [WR-28 Bandpass Waveguide Filter With Flange And a Pass Band From 30 GHz to 31 GHz PE-W28F001](https://www.pasternack.com/bandpass-waveguide-filter-wr-28-pass-band-30-31-ghz-pe-w28f001-p.aspx)

URL: <https://www.pasternack.com/bandpass-waveguide-filter-wr-28-pass-band-30-31-ghz-pe-w28f001-p.aspx>

The information contained in this document is accurate to the best of our knowledge and representative of the part described herein. It may be necessary to make modifications to the part and/or the documentation of the part, in order to implement improvements. Pasternack reserves the right to make such changes as required. Unless otherwise stated, all specifications are nominal. Pasternack does not make any representation or warranty regarding the suitability of the part described herein for any particular purpose, and Pasternack does not assume any liability arising out of the use of any part or documentation.