



N Male to SMA Female Cable Using RG316 Coax with HeatShrink, LF Solder

RF Cable Assemblies Technical Data Sheet

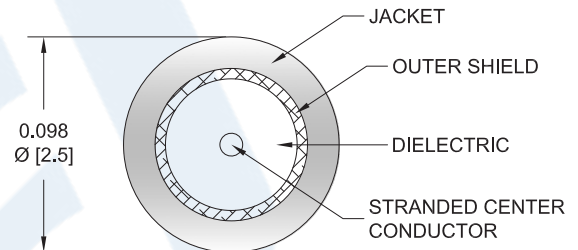
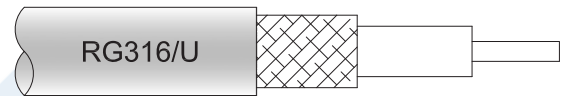
PE33939LF/HS

Configuration

- Connector 1: N Male
- Connector 2: SMA Female
- Cable Type: RG316

Features

- Max Frequency 1 GHz
- 69% Phase Velocity
- FEP Jacket



Applications

- General Purpose
- Laboratory Use

Description

Pasternack's PE33939LF/HS type N male to SMA female cable using RG316 coax is part of our full line of RF components available for same-day shipping. Pasternack's flexible RF cable assemblies are ideal for applications where tight bends and flexure are required. This Pasternack type N to SMA cable assembly has a male to female gender configuration with 50 ohm flexible RG316 coax. The PE33939LF/HS type N male to SMA female cable assembly operates to 1 GHz.

Custom versions of most RF cable assemblies can be built and shipped same day. Custom cable assembly lengths can be obtained by specifying the desired length on the web site at time of order or by contacting a sales representative. Other available RF cable assembly value added services include connector orientation or clocking, heat shrink booting and custom labeling. RF testing can also be performed to document the electrical performance of your cable assembly.

Click the following link (or enter part number in "SEARCH" on website) to obtain additional part information including price, inventory and certifications: [N Male to SMA Female Cable Using RG316 Coax with HeatShrink, LF Solder PE33939LF/HS](#)



N Male to SMA Female Cable Using
RG316 Coax with HeatShrink, LF Solder

RF Cable Assemblies Technical Data Sheet

PE33939LF/HS

Electrical Specifications

Description	Minimum	Typical	Maximum	Units
Frequency Range	DC		1,000	MHz
VSWR			1.4:1	
Velocity of Propagation		69		%
Operating Voltage (AC)			250	Vrms
Jacket Spark			2,000	Vrms

Specifications by Frequency

Description	F1	F2	F3	F4	F5	Units
Frequency	50	100	250	500	1,000	MHz
Insertion Loss (Typ.)	0.075	0.11	0.16	0.23	0.38	dB/ft
	0.25	0.36	0.52	0.75	1.25	dB/m

Electrical Specification Notes:

Insertion Loss does not include the loss of the connectors. Insertion Loss is estimated as 0.1 dB per connector.

Mechanical Specifications

Cable Assembly

Weight 0.079 lbs [35.83 g]

Cable

Cable Type RG316
 Impedance 50 Ohms
 Inner Conductor Type Stranded
 Inner Conductor Material and Plating Copper Clad Steel, Silver
 Dielectric Type PTFE
 Number of Shields 1
 Shield Layer 1 Silver Plated Copper Braid
 Jacket Material FEP, Tan
 Jacket Diameter 0.102 in [2.59 mm]

Click the following link (or enter part number in "SEARCH" on website) to obtain additional part information including price, inventory and certifications: [N Male to SMA Female Cable Using RG316 Coax with HeatShrink, LF Solder PE33939LF/HS](#)



N Male to SMA Female Cable Using
RG316 Coax with HeatShrink, LF Solder

RF Cable Assemblies Technical Data Sheet

PE33939LF/HS

Connectors

Description	Connector 1	Connector 2
Type	N Male	SMA Female
Specification	MIL-STD-348A	MIL-STD-348
Impedance	50 Ohms	50 Ohms
Mating Cycles		100
Contact Material and Plating	Brass, Gold	Beryllium Copper, Gold
Contact Plating Specification	30 µin minimum	
Dielectric Type	PTFE	PTFE
Outer Conductor Material and Plating		Brass, Nickel
Body Material and Plating	Brass, Nickel	Brass, Nickel
Body Plating Specification	100 µin minimum	
Coupling Nut Material and Plating	Brass, Nickel	
Coupling Nut Plating Specification	100 µin minimum	

Environmental Specifications

Temperature

Operating Range -55 to +165 deg C

Compliance Certifications (see [product page](#) for current document)

Plotted and Other Data

Notes:

Click the following link (or enter part number in "SEARCH" on website) to obtain additional part information including price, inventory and certifications: [N Male to SMA Female Cable Using RG316 Coax with HeatShrink, LF Solder PE33939LF/HS](#)



N Male to SMA Female Cable Using RG316 Coax with HeatShrink, LF Solder

RF Cable Assemblies Technical Data Sheet

PE33939LF/HS

How to Order

Part Number Configuration:

PE33939LF/HS - xx

uu

Unit of Measure:
cm = Centimeters
<blank> = Inches
Length
Base Number

Example: PE33939LF/HS-12 = 12 inches long cable
PE33939LF/HS-100cm = 100 cm long cable

N Male to SMA Female Cable Using RG316 Coax with HeatShrink, LF Solder from Pasternack Enterprises has same day shipment for domestic and International orders. Our RF, microwave and millimeter wave products maintain a 99.4% availability and are part of the broadest selection in the industry.

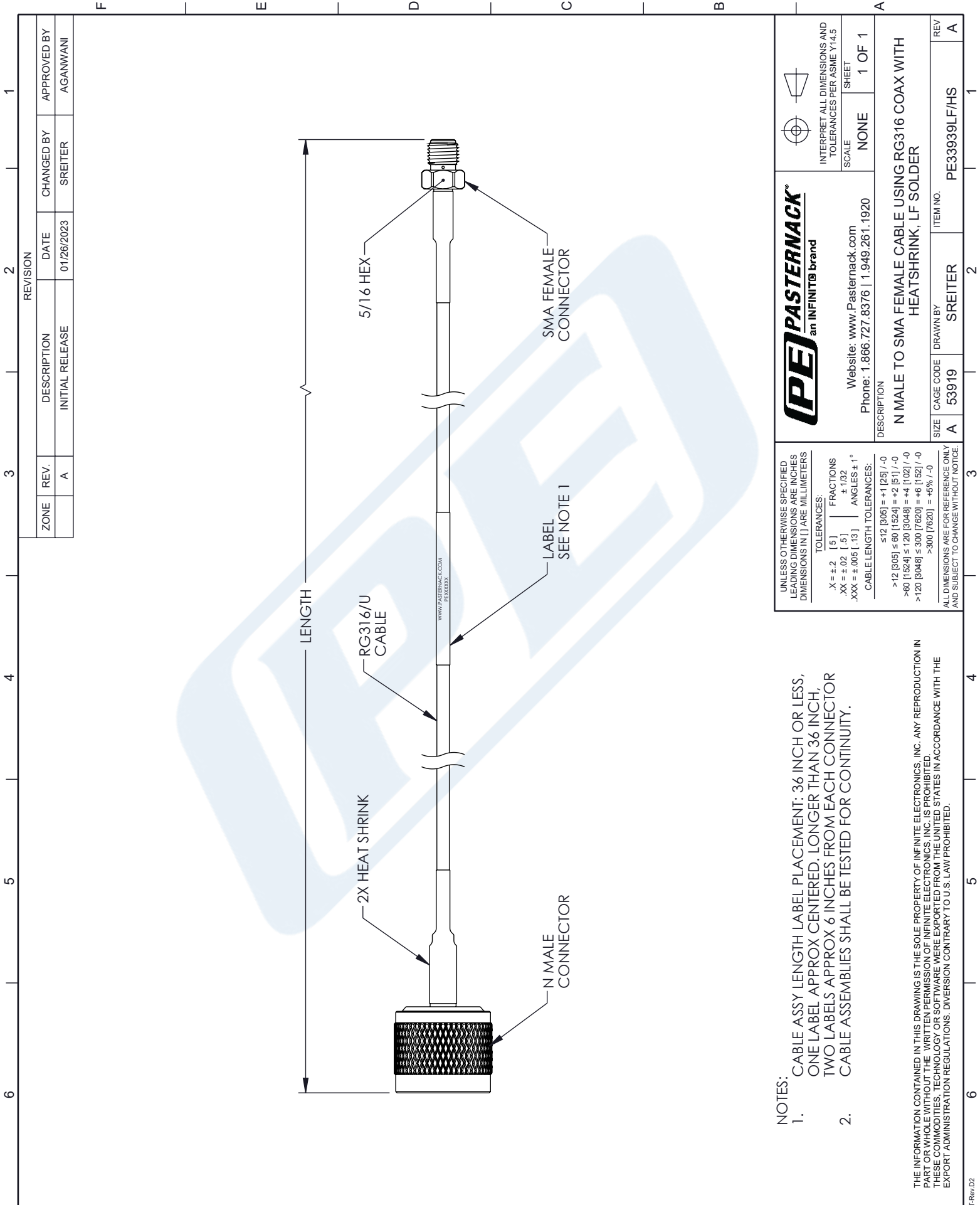
Click the following link (or enter part number in "SEARCH" on website) to obtain additional part information including price, inventory and certifications: [N Male to SMA Female Cable Using RG316 Coax with HeatShrink, LF Solder PE33939LF/HS](#)

URL: <https://www.pasternack.com/n-male-to-sma-female-cable-using-rg316-with-heatshrink-lf-solder-pe33939lf-hs-p.aspx>

The information contained in this document is accurate to the best of our knowledge and representative of the part described herein. It may be necessary to make modifications to the part and/or the documentation of the part, in order to implement improvements. Pasternack reserves the right to make such changes as required. Unless otherwise stated, all specifications are nominal. Pasternack does not make any representation or warranty regarding the suitability of the part described herein for any particular purpose, and Pasternack does not assume any liability arising out of the use of any part or documentation.

PE33939LF/HS CAD Drawing

N Male to SMA Female Cable Using RG316 Coax with HeatShrink, LF Solder



ZONE	REV.	DESCRIPTION	DATE	CHANGED BY	APPROVED BY
	A	INITIAL RELEASE	01/26/2023	SREITER	AGANWANI

PE PASTERNAK
an INFINITO brand

Website: www.Pasternack.com
Phone: 1.866.727.8376 | 1.949.261.1920

DESCRIPTION:
N MALE TO SMA FEMALE CABLE USING RG316 COAX WITH HEATSHRINK, LF SOLDER

SIZE: A CAGE CODE: 53919 DRAWN BY: SREITER ITEM NO.: PE33939LF/HS

INTERPRET ALL DIMENSIONS AND TOLERANCES PER ASME Y14.5

SCALE: NONE SHEET: 1 OF 1

NOTES:

- CABLE ASSY LENGTH LABEL PLACEMENT: 36 INCH OR LESS, ONE LABEL APPROX CENTERED. LONGER THAN 36 INCH, TWO LABELS APPROX 6 INCHES FROM EACH CONNECTOR. CABLE ASSEMBLIES SHALL BE TESTED FOR CONTINUITY.

THE INFORMATION CONTAINED IN THIS DRAWING IS THE SOLE PROPERTY OF INFINITE ELECTRONICS, INC. ANY REPRODUCTION IN PART OR WHOLE WITHOUT THE WRITTEN PERMISSION OF INFINITE ELECTRONICS, INC. IS PROHIBITED. THESE COMMODITIES, TECHNOLOGY OR SOFTWARE WERE EXPORTED FROM THE UNITED STATES IN ACCORDANCE WITH THE EXPORT ADMINISTRATION REGULATIONS. DIVERSION CONTRARY TO U.S. LAW PROHIBITED.