



N Male to N Male Right Angle Low Loss Cable Using PE-P142LL Coax with Double HeatShrink

TECHNICAL DATA SHEET

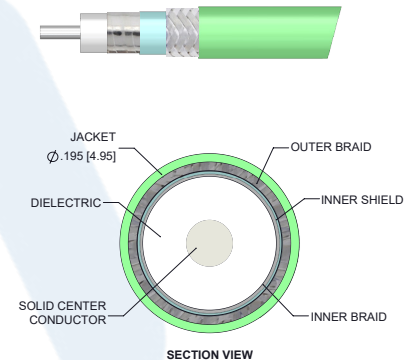
PE345/HS2

Configuration

- Connector 1: N Male
- Connector 2: N Male Right Angle
- Cable Type: PE-P142LL
- Coax Flex Type: Flexible

Features

- Max Frequency 18 GHz
- Shielding Effectivity > 95 dB
- 80% Phase Velocity
- Triple Shielded
- FEP Jacket
- 500 Mating Cycles



Applications

- General Purpose
- Laboratory Use

Description

Pasternack's PE345/HS2 type N male to type N male right angle cable using PE-P142LL coax is part of our full line of RF components available for same-day shipping. Pasternack's flexible RF cable assemblies are ideal for applications where tight bends and flexure are required. This Pasternack type N to type N cable assembly has a male to male gender configuration with 50 ohm flexible PE-P142LL coax. The PE345/HS2 type N male to type N male cable assembly operates to 18 GHz. The right angle type N interface on the PE-P142LL cable allows for easier connections in tight spaces. The triple shielding of this Pasternack cable assembly provides excellent shielding effectiveness of better than 95 dB.

Custom versions of most RF cable assemblies can be built and shipped same day. Custom cable assembly lengths can be obtained by specifying the desired length on the web site at time of order or by contacting a sales representative. Other available RF cable assembly value added services include connector orientation or clocking, heat shrink booting and custom labeling. RF testing can also be performed to document the electrical performance of your cable assembly.

Click the following link (or enter part number in "SEARCH" on website) to obtain additional part information including price, inventory and certifications: [N Male to N Male Right Angle Low Loss Cable Using PE-P142LL Coax with Double Heat-Shrink PE345/HS2](#)



N Male to N Male Right Angle Low Loss Cable Using PE-P142LL Coax with Double HeatShrink

TECHNICAL DATA SHEET

PE345/HS2

Electrical Specifications

Description	Minimum	Typical	Maximum	Units
Frequency Range	DC		18	GHz
VSWR			1.4:1	
Velocity of Propagation		80		%
RF Shielding	95			dB
Capacitance		25 [82.02]		pF/ft [pF/m]

Specifications by Frequency

Part Number	Length	Description	F1	F2	F3	F4	F5	Units	Weight (lbs)
			Frequency	1000	2000	4500	9000	18000	
PE345/HS2	Custom Lengths Available	Insertion Loss (Typ.)	0.08	0.12	0.178	0.257	0.376	dB/ft	
			0.27	0.4	0.59	0.85	1.24	dB/m	
PE345/HS2-12	12 inch	Insertion Loss (Typ.)	0.23	0.34	0.5	0.71	1.02	dB	0.195
PE345/HS2-24	24 inch	Insertion Loss (Typ.)	0.31	0.46	0.68	0.97	1.39	dB	0.234
PE345/HS2-36	36 inch	Insertion Loss (Typ.)	0.39	0.58	0.86	1.23	1.77	dB	0.272
PE345/HS2-48	48 inch	Insertion Loss (Typ.)	0.47	0.7	1.04	1.48	2.15	dB	0.31
PE345/HS2-60	60 inch	Insertion Loss (Typ.)	0.55	0.82	1.21	1.74	2.52	dB	0.348

The insertion loss data for the base model does not include loss due to the connectors. Each length includes insertion loss due to the connectors.

Loss due to Connector 1: $0.05 \cdot \sqrt{\text{FGHz}}$ dB

Loss due to Connector 2: $0.1 \cdot \sqrt{\text{FGHz}}$ dB

Base Weight: 0.195 pounds

Additional Weight per Inch: 0.00317 pounds

Mechanical Specifications

Cable Assembly

Weight 0.195 lbs [88.45 g]

Click the following link (or enter part number in "SEARCH" on website) to obtain additional part information including price, inventory and certifications: [N Male to N Male Right Angle Low Loss Cable Using PE-P142LL Coax with Double Heat-Shrink PE345/HS2](#)



N Male to N Male Right Angle Low Loss Cable Using PE-P142LL Coax with Double HeatShrink

TECHNICAL DATA SHEET

PE345/HS2

Cable

Cable Type	PE-P142LL
Impedance	50 Ohms
Inner Conductor Type	Solid
Inner Conductor Material and Plating	Copper, Silver
Dielectric Type	PTFE
Number of Shields	3
Shield Layer 1	Silver Plated Copper Tape
Shield Layer 2	Aluminum Polyester
Shield Layer 3	Silver Plated Copper Wire
Jacket Material	FEP, Green
Jacket Diameter	0.195 in [4.95 mm]
Repeated Minimum Bend Radius	0.975 in [24.77 mm]

Connectors

Description	Connector 1	Connector 2
Type	N Male Threaded	N Male Right Angle Threaded
Impedance	50 Ohms	50 Ohms
Mating Cycles	500	500
Contact Material and Plating	Beryllium Copper, Gold over Nickel	Beryllium Copper, Gold over Nickel
Contact Plating Specification	50 µin minimum	50 µin minimum
Dielectric Type	PTFE	PTFE
Body Material and Plating	Passivated Stainless Steel	Passivated Stainless Steel
Body Plating Specification	SAE-AMS-2700	SAE-AMS-2700
Coupling Nut Material and Plating	Passivated Stainless Steel	Passivated Stainless Steel
Coupling Nut Plating Specification	SAE-AMS-2700	SAE-AMS-2700
Hex Size	3/4 inch	3/4 inch
Torque	19 in-lbs [2.15 Nm]	12 in-lbs [1.36 Nm]

Environmental Specifications

Temperature

Operating Range -55 to +165 deg C

Compliance Certifications (see [product page](#) for current document)

Plotted and Other Data

Notes:

Click the following link (or enter part number in "SEARCH" on website) to obtain additional part information including price, inventory and certifications: [N Male to N Male Right Angle Low Loss Cable Using PE-P142LL Coax with Double Heat-Shrink PE345/HS2](#)



N Male to N Male Right Angle Low Loss Cable Using PE-P142LL Coax with Double HeatShrink

TECHNICAL DATA SHEET

PE345/HS2

How to Order

Part Number Configuration:

PE345/HS2

- xx

uu

Unit of Measure:

cm = Centimeters

<blank> = Inches

Length

Base Number

Example: PE345/HS2-12 = 12 inches long cable
PE345/HS2-100cm = 100 cm long cable

N Male to N Male Right Angle Low Loss Cable Using PE-P142LL Coax with Double HeatShrink from Pasternack Enterprises has same day shipment for domestic and International orders. Our RF, microwave and millimeter wave products maintain a 99.4% availability and are part of the broadest selection in the industry.

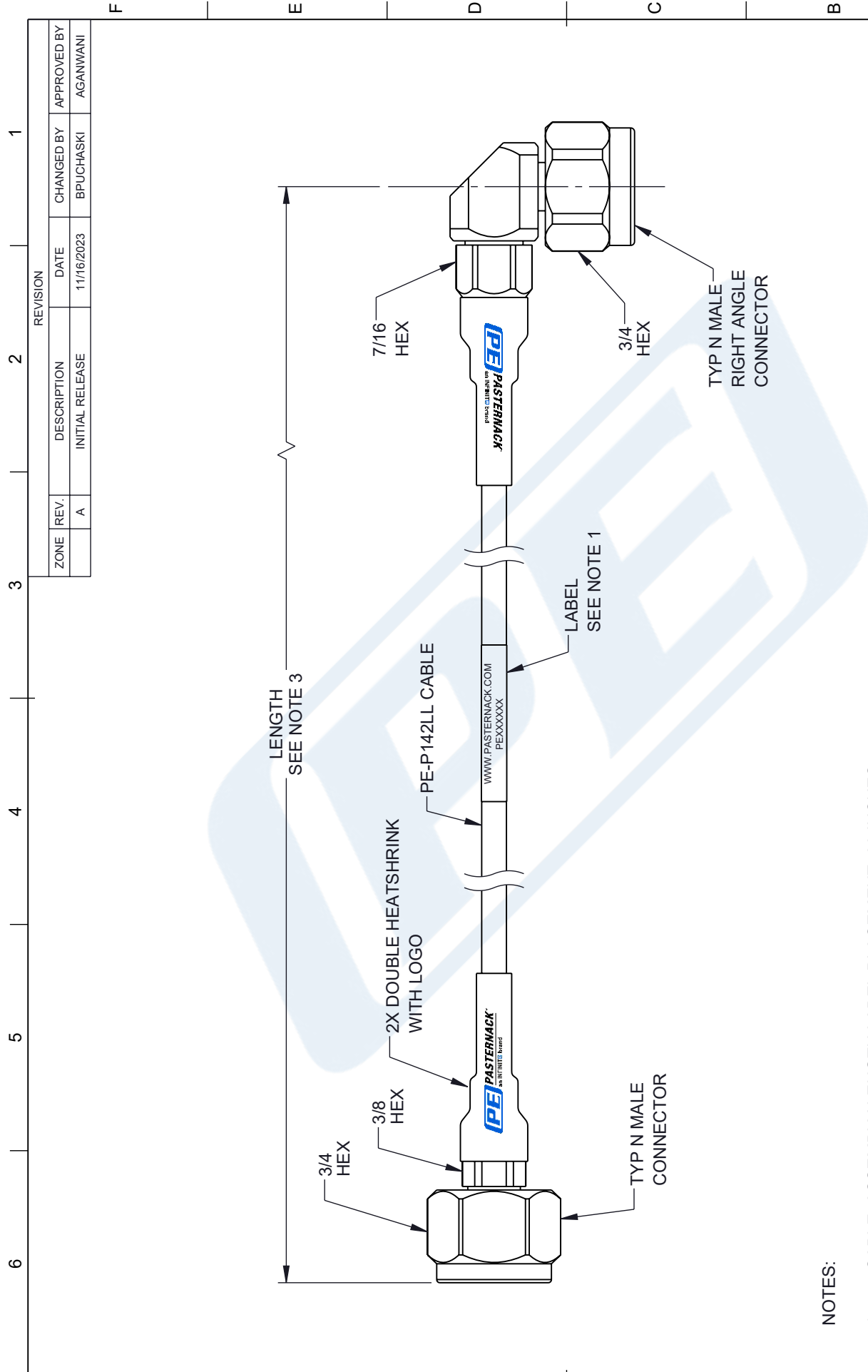
Click the following link (or enter part number in "SEARCH" on website) to obtain additional part information including price, inventory and certifications: [N Male to N Male Right Angle Low Loss Cable Using PE-P142LL Coax with Double HeatShrink PE345/HS2](#)

URL: <https://www.pasternack.com/n-male-to-n-male-low-loss-cable-using-pe-p142ll-with-double-heatshrink-pe345-hs2-p.aspx>

The information contained in this document is accurate to the best of our knowledge and representative of the part described herein. It may be necessary to make modifications to the part and/or the documentation of the part, in order to implement improvements. Pasternack reserves the right to make such changes as required. Unless otherwise stated, all specifications are nominal. Pasternack does not make any representation or warranty regarding the suitability of the part described herein for any particular purpose, and Pasternack does not assume any liability arising out of the use of any part or documentation.

PE345/HS2 CAD Drawing

N Male to N Male Right Angle Low Loss Cable Using PE-P142LL Coax with Double HeatShrink



NOTES:

1. CABLE ASSEMBLY LENGTH LABEL PLACEMENT: 36 INCHES OR LESS, ONE LABEL APPROXIMATELY CENTERED. LONGER THAN 36 INCHES, TWO LABELS APPROXIMATELY 6 INCHES FROM EACH CONNECTOR.
2. CABLE ASSEMBLIES SHALL BE TESTED FOR CONTINUITY.
3. CABLE ASSEMBLY LENGTH DETERMINED BY ITEM PN AND DESCRIPTION

THE INFORMATION CONTAINED IN THIS DRAWING IS THE SOLE PROPERTY OF INFINITE ELECTRONICS, INC. ANY REPRODUCTION IN PART OR WHOLE WITHOUT THE WRITTEN PERMISSION OF INFINITE ELECTRONICS, INC. IS PROHIBITED. THESE COMMODITIES, TECHNOLOGY OR SOFTWARE WERE EXPORTED FROM THE UNITED STATES IN ACCORDANCE WITH THE EXPORT ADMINISTRATION REGULATIONS. DIVERSION CONTRARY TO U.S. LAW PROHIBITED.

UNLESS OTHERWISE SPECIFIED, LEADING DIMENSIONS ARE IN INCHES. DIMENSIONS IN PARENTHESES ARE IN MILLIMETERS.	
TOLERANCES:	FRACTIONS
.X = ±.2 [5]	±.132
.XX = ±.02 [0.5]	±.132
.XXX = ±.005 [0.13]	ANGLES ± 1°
CABLE LENGTH TOLERANCES:	
>12 [305] ≤ 517 [1304]	±.125 / -0
>517 [1304] ≤ 812 [2057]	±.125 / -0
>812 [2057] ≤ 120 [3048]	±.125 / -0
>120 [3048] ≤ 300 [7620]	±.125 / -0
>300 [7620]	±.125 / -0
ALL DIMENSIONS ARE FOR REFERENCE ONLY. UNLESS OTHERWISE SPECIFIED, DIMENSIONS ARE IN INCHES. DIMENSIONS IN PARENTHESES ARE IN MILLIMETERS. UNLESS OTHERWISE SPECIFIED, DIMENSIONS ARE IN INCHES. DIMENSIONS IN PARENTHESES ARE IN MILLIMETERS. COLORS MAY VARY.	

Website: www.Pasternack.com
Phone: 1.866.727.8376 | 1.949.261.1920

INTERPRET ALL DIMENSIONS AND TOLERANCES PER ASME Y14.5

SCALE: NONE

SHEET: 1 OF 1

DESCRIPTION: N MALE TO N MALE RIGHT ANGLE LOW LOSS CABLE USING PE-P142LL COAX WITH DOUBLE HEATSHRINK

SIZE: A	CAGE CODE: 53919	DRAWN BY: BPUCHASKI	ITEM NO.: PE345/HS2	REV: A
---------	------------------	---------------------	---------------------	--------