

MCX Plug Right Angle to SMA Male Right Angle Cable Using RG316-DS Coax with HeatShrink



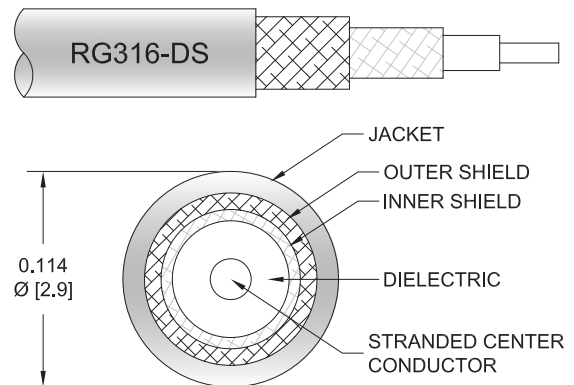
PE35087/HS

Configuration

- Connector 1: MCX Plug Right Angle
- Connector 2: SMA Male Right Angle
- Cable Type: RG316-DS
- Coax Flex Type: Flexible

Features

- Max Frequency 3 GHz
- 70% Phase Velocity
- Double Shielded
- FEP Jacket



Applications

- General Purpose
- Laboratory Use

Description

Pasternack's PE35087/HS MCX plug right angle to SMA male right angle cable using RG316-DS coax is part of our full line of RF components available for same-day shipping. Pasternack's flexible RF cable assemblies are ideal for applications where tight bends and flexure are required. This Pasternack MCX to SMA cable assembly has a plug to male gender configuration with 50 ohm flexible RG316-DS coax. The PE35087/HS MCX plug to SMA male cable assembly operates to 3 GHz. The right angle MCX and right angle SMA interfaces on the RG316-DS cable allow for easier connections in tight spaces. The double shielding of this Pasternack cable assembly provides excellent shielding effectiveness.

Custom versions of most RF cable assemblies can be built and shipped same day. Custom cable assembly lengths can be obtained by specifying the desired length on the web site at time of order or by contacting a sales representative. Other available RF cable assembly value added services include connector orientation or clocking, heat shrink booting and custom labeling. RF testing can also be performed to document the electrical performance of your cable assembly.

Electrical Specifications

Description	Minimum	Typical	Maximum	Units
Frequency Range	DC		3	GHz
VSWR			1.5:1	
Velocity of Propagation		70		%
Capacitance		29.4 [96.46]		pF/ft [pF/m]

Specifications by Frequency

MCX Plug Right Angle to SMA Male Right Angle
Cable Using RG316-DS Coax with HeatShrink



PE35087/HS

Part Number	Length	Description	F1	F2	F3	F4	F5	Units	Weight (lbs)
			Frequency					MHz	
PE35087/HS	Custom Lengths Available	Insertion Loss (Typ.)	0.08	0.13	0.19	0.29	0.536	dB/ft	
			0.28	0.43	0.64	0.96	1.76	dB/m	
PE35087/HS-6	6 inch	Insertion Loss (Typ.)	0.45	0.47	0.5	0.55	0.67	dB	0.03
PE35087/HS-12	12 inch	Insertion Loss (Typ.)	0.49	0.53	0.6	0.69	0.94	dB	0.037
PE35087/HS-24	24 inch	Insertion Loss (Typ.)	0.57	0.66	0.79	0.98	1.48	dB	0.052
PE35087/HS-36	36 inch	Insertion Loss (Typ.)	0.65	0.79	0.99	1.27	2.01	dB	0.066
PE35087/HS-48	48 inch	Insertion Loss (Typ.)	0.74	0.92	1.18	1.56	2.55	dB	0.08

The insertion loss data for the base model does not include loss due to the connectors. Each length includes insertion loss due to the connectors.

Loss due to Connector 1: 0.2 dB
 Loss due to Connector 2: 0.2 dB
 Base Weight: 0.037 pounds
 Additional Weight per Inch: 0.00117 pounds

Mechanical Specifications

Cable Assembly

Width/Diameter 0.5 in [12.7 mm]

Cable

Cable Type RG316-DS
 Impedance 50 Ohms
 Inner Conductor Type Stranded
 Inner Conductor Material and Plating Copper Clad Steel, Silver
 Dielectric Type PTFE
 Number of Shields 2
 Shield Layer 1 Silver Plated Copper Braid
 Shield Layer 2 Silver Plated Copper Braid
 Jacket Material FEP, Tan
 Jacket Diameter 0.114 in [2.9 mm]
 Repeated Minimum Bend Radius 0.6 in [15.24 mm]

MCX Plug Right Angle to SMA Male Right Angle
Cable Using RG316-DS Coax with HeatShrink



PE35087/HS

Connectors

Description	Connector 1	Connector 2
Type	MCX Plug Right Angle	SMA Male Right Angle
Specification		MIL-STD-348A
Impedance	50 Ohms	50 Ohms
Configuration	Right Angle	Right Angle
Contact Material and Plating		Brass, Gold
Contact Plating Specification		50 µin minimum
Dielectric Type		PTFE
Body Material and Plating	Brass, Nickel	Brass, Nickel
Body Plating Specification		100 µin minimum
Coupling Nut Material and Plating		Brass, Nickel
Coupling Nut Plating Specification		100 µin minimum
Hex Size		5/16 inch
Torque		3 in-lbs 0.34 Nm

Environmental Specifications

Compliance Certifications (see [product page](#) for current document)

Plotted and Other Data

Notes:

MCX Plug Right Angle to SMA Male Right Angle Cable Using RG316-DS Coax with HeatShrink

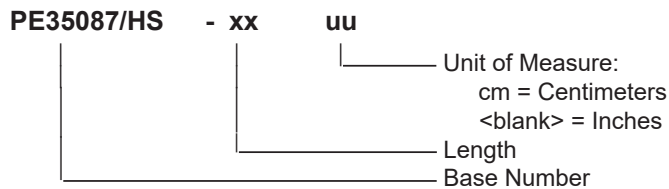


PE35087/HS

Typical Performance Data

How to Order

Part Number Configuration:



Example: PE35087/HS-12 = 12 inches long cable
PE35087/HS-100cm = 100 cm long cable

MCX Plug Right Angle to SMA Male Right Angle Cable Using RG316-DS Coax with HeatShrink from Pasternack Enterprises has same day shipment for domestic and International orders. Our RF, microwave and millimeter wave products maintain a 99.4% availability and are part of the broadest selection in the industry.

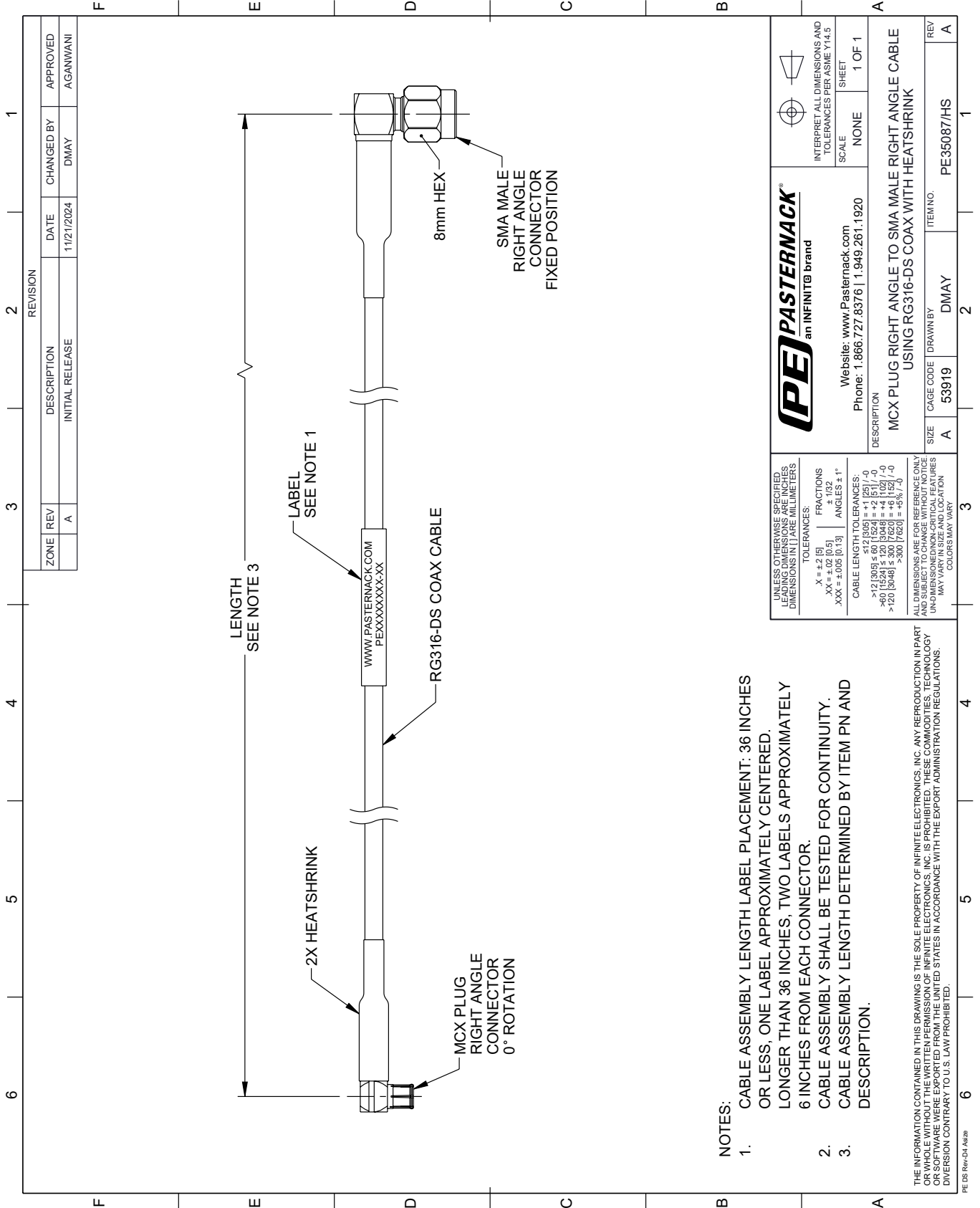
Click the following link (or enter part number in "SEARCH" on website) to obtain additional part information including price, inventory and certifications: [MCX Plug Right Angle to SMA Male Right Angle Cable Using RG316-DS Coax with HeatShrink PE35087/HS](#)

URL: <https://www.pasternack.com/mcx-plug-right-angle-to-sma-male-cable-using-rg316-ds-with-heatshrink-pe35087-hs-p.aspx>

The information contained within this document is accurate to the best of our knowledge and representative of the part described herein. It may be necessary to make modifications to the part and/or the documentation of the part in order to implement improvements. Pasternack Enterprises reserves the right to make such changes as required. Unless otherwise stated, all specifications are nominal. Pasternack Enterprises does not make any representation or warranty regarding the suitability of the part described herein for any particular purpose, and Pasternack Enterprises does not assume liability arising out of the use of any part or document.

PE35087/HS CAD Drawing

MCX Plug Right Angle to SMA Male Right Angle Cable Using RG316-DS Coax with HeatShrink



		INTERPRET ALL DIMENSIONS AND TOLERANCES PER ASME Y14.5 SCALE: NONE SHEET: 1 OF 1	
Website: www.Pasternack.com Phone: 1.866.727.8376 1.949.261.1920		ITEM NO.: PE35087/HS	
DESCRIPTION: MCX PLUG RIGHT ANGLE TO SMA MALE RIGHT ANGLE CABLE USING RG316-DS COAX WITH HEATSHRINK			
SIZE: A	CAGE CODE: 53919	DRAWN BY: DMAY	REV: A

UNLESS OTHERWISE SPECIFIED, LEADING DIMENSIONS ARE IN INCHES AND TRAILING DIMENSIONS ARE IN MILLIMETERS.

TOLERANCES:
 .X = ±.2 [5]
 .XX = ±.02 [0.5]
 .XXX = ±.005 [0.13]

FRACTIONS: ± 1/32
 ANGLES ± 1°

CABLE LENGTH TOLERANCES:
 >12 [305] ≤ 60 [1524] = ±.1 [2.5] / -0
 >60 [1524] ≤ 120 [3048] = ±.4 [102] / -0
 >120 [3048] ≤ 300 [7620] = ±.6 [15.2] / -0

ALL DIMENSIONS ARE FOR REFERENCE ONLY. UNLESS OTHERWISE SPECIFIED, DIMENSIONS MAY VARY IN SIZE AND LOCATION. COLORS MAY VARY.

- NOTES:**
- CABLE ASSEMBLY LENGTH LABEL PLACEMENT: 36 INCHES OR LESS, ONE LABEL APPROXIMATELY CENTERED. LONGER THAN 36 INCHES, TWO LABELS APPROXIMATELY 6 INCHES FROM EACH CONNECTOR.
 - CABLE ASSEMBLY SHALL BE TESTED FOR CONTINUITY.
 - CABLE ASSEMBLY LENGTH DETERMINED BY ITEM PN AND DESCRIPTION.

THE INFORMATION CONTAINED IN THIS DRAWING IS THE SOLE PROPERTY OF INFINITE ELECTRONICS, INC. ANY REPRODUCTION IN PART OR WHOLE WITHOUT THE WRITTEN PERMISSION OF INFINITE ELECTRONICS, INC. IS PROHIBITED. THESE COMMODITIES, TECHNOLOGY OR SOFTWARE WERE EXPORTED FROM THE UNITED STATES IN ACCORDANCE WITH THE EXPORT ADMINISTRATION REGULATIONS. DIVISION CONTRARY TO U.S. LAW PROHIBITED.