



3.5mm Male to 3.5mm Male Cable Using  
PE-SR402FL Coax, RoHS

**TECHNICAL DATA SHEET**

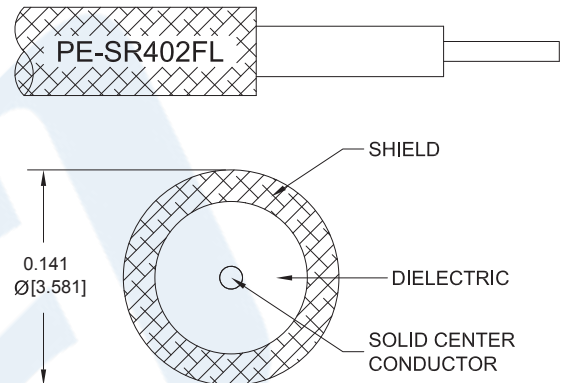
**PE35184LF**

**Configuration**

- Connector 1: 3.5mm Male
- Connector 2: 3.5mm Male
- Cable Type: PE-SR402FL
- Coax Flex Type: Formable

**Features**

- Max Frequency 20 GHz
- Shielding Effectivity > 100 dB
- 69.5% Phase Velocity



**Applications**

- General Purpose
- Laboratory Use

**Description**

Pasternack's PE35184LF 3.5mm male to 3.5mm male cable using PE-SR402FL coax is part of our full line of RF components available for same-day shipping. Pasternack's formable RF cable assemblies provide an alternative to costly pre-formed semi-rigid assemblies since they are hand formable. This Pasternack 3.5mm to 3.5mm cable assembly has a male to male gender configuration with 50 ohm formable PE-SR402FL coax. The PE35184LF 3.5mm male to 3.5mm male cable assembly operates to 20 GHz.

Custom versions of most RF cable assemblies can be built and shipped same day. Custom cable assembly lengths can be obtained by specifying the desired length on the web site at time of order or by contacting a sales representative. Other available RF cable assembly value added services include connector orientation or clocking, heat shrink booting and custom labeling. RF testing can also be performed to document the electrical performance of your cable assembly.

Click the following link (or enter part number in "SEARCH" on website) to obtain additional part information including price, inventory and certifications: [3.5mm Male to 3.5mm Male Cable Using PE-SR402FL Coax, RoHS PE35184LF](#)



## 3.5mm Male to 3.5mm Male Cable Using PE-SR402FL Coax, RoHS

### TECHNICAL DATA SHEET

**PE35184LF**

#### Electrical Specifications

Description	Minimum	Typical	Maximum	Units
Frequency Range	DC		20	GHz
Velocity of Propagation		69.5		%
RF Shielding	100			dB
Group Delay		1.43 [4.69]		ns/ft [ns/m]
Capacitance		29 [95.14]		pF/ft [pF/m]

#### Specifications by Frequency

Part Number	Length	Description	F1	F2	F3	F4	F5	Units	Weight (lbs)
		Frequency	1000	2000	4500	9000	#####	MHz	
PE35184LF	Custom Lengths Available	Insertion Loss (Typ.)	0.12	0.16	0.26	0.41	0.7	dB/ft	
			0.4	0.53	0.86	1.35	2.3	dB/m	
PE35184LF-6	6 inch	Insertion Loss (Typ.)	0.26	0.28	0.33	0.41	0.55	dB	0.037
PE35184LF-9	9 inch	Insertion Loss (Typ.)	0.29	0.32	0.4	0.51	0.73	dB	0.043
PE35184LF-12	12 inch	Insertion Loss (Typ.)	0.32	0.36	0.46	0.61	0.9	dB	0.049
PE35184LF-18	18 inch	Insertion Loss (Typ.)	0.38	0.44	0.59	0.82	1.25	dB	0.062
PE35184LF-24	24 inch	Insertion Loss (Typ.)	0.44	0.52	0.72	1.02	1.6	dB	0.075

The insertion loss data for the base model does not include loss due to the connectors. Each length includes insertion loss due to the connectors.

Loss due to Connector 1:	0.1 dB
Loss due to Connector 2:	0.1 dB
Base Weight:	0.049 pounds
Additional Weight per Inch:	0.00209 pounds

#### Electrical Specification Notes:

Insertion Loss does not include the loss of the connectors. Insertion Loss is estimated as 0.1 dB per connector.

#### Mechanical Specifications

##### Cable Assembly

Weight	0.049 lbs [22.23 g]
--------	---------------------

Click the following link (or enter part number in "SEARCH" on website) to obtain additional part information including price, inventory and certifications: [3.5mm Male to 3.5mm Male Cable Using PE-SR402FL Coax, RoHS PE35184LF](#)



3.5mm Male to 3.5mm Male Cable Using  
PE-SR402FL Coax, RoHS

**TECHNICAL DATA SHEET**

**PE35184LF**

**Cable**

Cable Type	PE-SR402FL
Impedance	50 Ohms
Inner Conductor Type	Solid
Inner Conductor Material and Plating	Copper, Silver
Dielectric Type	PTFE
Number of Shields	1
Shield Layer 1	Tinned Copper Braid
One Time Minimum Bend Radius	0.315 in [8 mm]
Repeated Minimum Bend Radius	1.57 in [39.88 mm]

**Connectors**

Description	Connector 1	Connector 2
Type	3.5mm Male Threaded	3.5mm Male Threaded
Impedance	50 Ohms	50 Ohms
Contact Material and Plating	Beryllium Copper, Gold	Beryllium Copper, Gold
Contact Plating Specification	50µ in. minimum	50µ in. minimum
Dielectric Type	PCTFE	PCTFE
Body Material and Plating	Passivated Stainless Steel	Passivated Stainless Steel
Body Plating Specification	SAE-AMS-2700	SAE-AMS-2700
Coupling Nut Material and Plating	Passivated Stainless Steel	Passivated Stainless Steel
Coupling Nut Plating Specification	SAE-AMS-2700	SAE-AMS-2700
Hex Size	5/16 in.	5/16 in.
Torque	8 in-lbs [0.9 Nm]	8 in-lbs [0.9 Nm]

**Compliance Certifications** (see [product page](#) for current document)

**Plotted and Other Data**

Notes:

Click the following link (or enter part number in "SEARCH" on website) to obtain additional part information including price, inventory and certifications: [3.5mm Male to 3.5mm Male Cable Using PE-SR402FL Coax, RoHS PE35184LF](#)



## 3.5mm Male to 3.5mm Male Cable Using PE-SR402FL Coax, RoHS

### TECHNICAL DATA SHEET

**PE35184LF**

#### How to Order

Part Number Configuration:

**PE35184LF**

- **xx**

**uu**

Unit of Measure:  
cm = Centimeters  
<blank> = Inches  
Length  
Base Number

Example: PE35184LF-12 = 12 inches long cable  
PE35184LF-100cm = 100 cm long cable

3.5mm Male to 3.5mm Male Cable Using PE-SR402FL Coax, RoHS from Pasternack Enterprises has same day shipment for domestic and International orders. Our RF, microwave and millimeter wave products maintain a 99.4% availability and are part of the broadest selection in the industry.

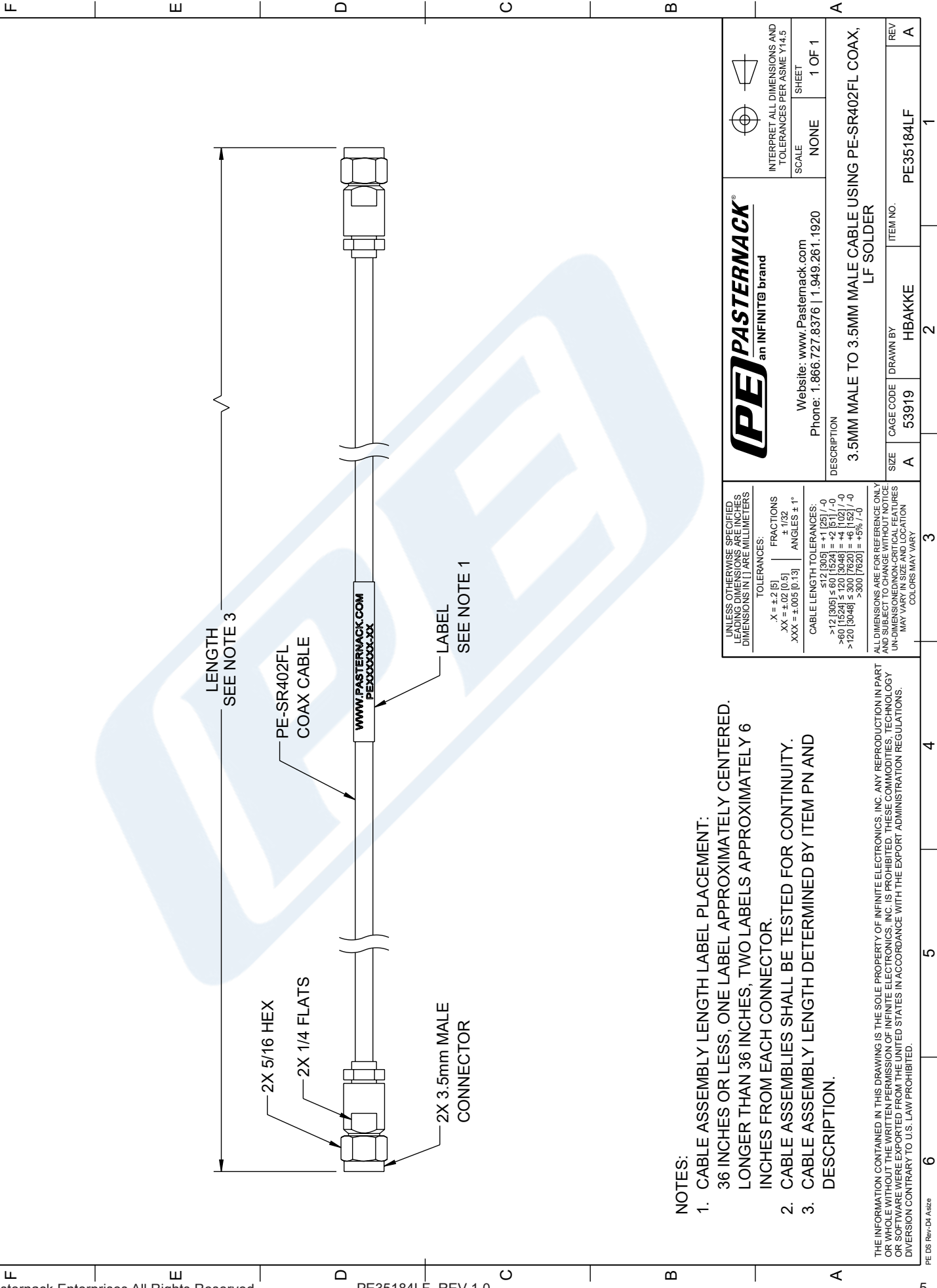
Click the following link (or enter part number in "SEARCH" on website) to obtain additional part information including price, inventory and certifications: [3.5mm Male to 3.5mm Male Cable Using PE-SR402FL Coax, RoHS PE35184LF](#)

URL: <https://www.pasternack.com/3.5mm-male-3.5mm-male-pe-sr402fl-cable-assembly-pe35184lf-p.aspx>

The information contained in this document is accurate to the best of our knowledge and representative of the part described herein. It may be necessary to make modifications to the part and/or the documentation of the part, in order to implement improvements. Pasternack reserves the right to make such changes as required. Unless otherwise stated, all specifications are nominal. Pasternack does not make any representation or warranty regarding the suitability of the part described herein for any particular purpose, and Pasternack does not assume any liability arising out of the use of any part or documentation.

PE35184LF CAD Drawing

3.5mm Male to 3.5mm Male Cable Using PE-SR402FL Coax, RoHS





NOTES:

1. CABLE ASSEMBLY LENGTH LABEL PLACEMENT:  
36 INCHES OR LESS, ONE LABEL APPROXIMATELY CENTERED.  
LONGER THAN 36 INCHES, TWO LABELS APPROXIMATELY 6 INCHES FROM EACH CONNECTOR.
2. CABLE ASSEMBLIES SHALL BE TESTED FOR CONTINUITY.
3. CABLE ASSEMBLY LENGTH DETERMINED BY ITEM PN AND DESCRIPTION.

THE INFORMATION CONTAINED IN THIS DRAWING IS THE SOLE PROPERTY OF INFINITE ELECTRONICS, INC. ANY REPRODUCTION IN PART OR WHOLE WITHOUT THE WRITTEN PERMISSION OF INFINITE ELECTRONICS, INC. IS PROHIBITED. THESE COMMODITIES, TECHNOLOGY OR SOFTWARE WERE EXPORTED FROM THE UNITED STATES IN ACCORDANCE WITH THE EXPORT ADMINISTRATION REGULATIONS. DIVERSION CONTRARY TO U.S. LAW PROHIBITED.

ZONE	REV	DESCRIPTION	DATE	CHANGED BY	APPROVED
	A	INITIAL RELEASE	10/17/2023	HBAKKE	AGANWANI

 an INFINIT@ brand			
Website: <a href="http://www.Pasternack.com">www.Pasternack.com</a> Phone: 1.866.727.8376   1.949.261.1920		SCALE	NONE
DESCRIPTION 3.5MM MALE TO 3.5MM MALE CABLE USING PE-SR402FL COAX, LF SOLDER		SHEET	1 OF 1
SIZE A	CAGE CODE 53919	DRAWN BY HBAKKE	ITEM NO. PE35184LF
		REV A	

UNLESS OTHERWISE SPECIFIED, LEADING DIMENSIONS ARE IN INCHES. DIMENSIONS IN [ ] ARE MILLIMETERS.	
TOLERANCES: X = ±.2 [5] XX = ±.02 [0.5] XXX = ±.005 [0.13]	FRACTIONS ± 1/32 ANGLES ± 1°
CABLE LENGTH TOLERANCES: >12 [305] ≤ 517 [1303] = ±.125 [-0] >517 [1303] ≤ 120 [3048] = ±.25 [-0] >60 [1524] ≤ 120 [3048] = ±.102 [-0] >120 [3048] ≤ 300 [7620] = ±.152 [-0] >300 [7620] = ±.5% [-0]	
ALL DIMENSIONS ARE FOR REFERENCE ONLY. UNLESS OTHERWISE SPECIFIED, DIMENSIONS ARE IN INCHES. UNLESS OTHERWISE SPECIFIED, DIMENSIONS ARE IN MILLIMETERS. UNLESS OTHERWISE SPECIFIED, DIMENSIONS ARE IN INCHES. UNLESS OTHERWISE SPECIFIED, DIMENSIONS ARE IN MILLIMETERS. UNLESS OTHERWISE SPECIFIED, DIMENSIONS ARE IN INCHES. UNLESS OTHERWISE SPECIFIED, DIMENSIONS ARE IN MILLIMETERS.	