



# SMA Female 2 Hole Flange to SMA Female 2 Hole Flange Cable 36 Inch Length Using RG402 Coax

## RF Cable Assemblies Technical Data Sheet

PE3525-36

### Configuration

- Connector 1: SMA Female 2 Hole Flange
- Connector 2: SMA Female 2 Hole Flange
- Cable Type: RG402

### Features

- Max Frequency 18 GHz

### Applications

- General Purpose
- Laboratory Use

### Description

Pasternack's PE3525-36 SMA female 2 hole flange to SMA female 2 hole flange 36 inch cable using RG402 coax is part of our full line of RF components available for same-day shipping. Pasternack's semi-rigid RF cable assemblies are ideal for high performance applications and can be formed, using proper tooling, to the routing pattern required. This Pasternack SMA to SMA cable assembly has a female to female gender configuration with 50 ohm semi-rigid RG402 coax. The PE3525-36 SMA female to SMA female cable assembly operates to 18 GHz. Our RF cable assembly with SMA 2 hole flange interface allows designers to create external connections on their product enclosures, and can be used in a variety of other rack mount and panel mount applications.

Custom versions of most RF cable assemblies can be built and shipped same day. Custom cable assembly lengths can be obtained by specifying the desired length on the web site at time of order or by contacting a sales representative. Other available RF cable assembly value added services include connector orientation or clocking, heat shrink booting and custom labeling. RF testing can also be performed to document the electrical performance of your cable assembly.

### Electrical Specifications

| Description     | Minimum | Typical     | Maximum | Units        |
|-----------------|---------|-------------|---------|--------------|
| Frequency Range | DC      |             | 18      | GHz          |
| VSWR            |         |             | 1.4:1   |              |
| Capacitance     |         | 29.9 [98.1] |         | pF/ft [pF/m] |

### Specifications by Frequency

| Description           | F1    | F2    | F3    | F4    | F5    | Units |
|-----------------------|-------|-------|-------|-------|-------|-------|
| Frequency             | 1     | 2     | 4.5   | 9     | 18    | GHz   |
| Insertion Loss (Typ.) | 0.532 | 0.662 | 0.979 | 1.412 | 2.108 | dB    |

Electrical Specification Notes:

Click the following link (or enter part number in "SEARCH" on website) to obtain additional part information including price, inventory and certifications: [SMA Female 2 Hole Flange to SMA Female 2 Hole Flange Cable 36 Inch Length Using RG402 Coax PE3525-36](#)



SMA Female 2 Hole Flange to SMA Female 2 Hole  
Flange Cable 36 Inch Length Using RG402 Coax

RF Cable Assemblies Technical Data Sheet

PE3525-36

The Insertion Loss data above is based on the performance specifications of the coax cable used in this assembly. The Insertion Loss includes an estimated insertion loss of 0.1 dB per connector.

**Mechanical Specifications**

**Cable Assembly**

|          |                     |
|----------|---------------------|
| Length*  | 36 in [914.4 mm]    |
| Diameter | 0.25 in [6.35 mm]   |
| Weight   | 0.115 lbs [52.16 g] |

**Cable**

|                                      |                           |
|--------------------------------------|---------------------------|
| Cable Type                           | RG402                     |
| Impedance                            | 50 Ohms                   |
| Inner Conductor Type                 | Solid                     |
| Inner Conductor Material and Plating | Copper Clad Steel, Silver |
| Dielectric Type                      | PTFE                      |
| Number of Shields                    | 1                         |
| Shield Layer 1                       | Copper                    |

**Connectors**

| Description                   | Connector 1                   | Connector 2                   |
|-------------------------------|-------------------------------|-------------------------------|
| Type                          | SMA Female 2 Hole Flange      | SMA Female 2 Hole Flange      |
| Specification                 | MIL-STD-348                   | MIL-STD-348                   |
| Impedance                     | 50 Ohms                       | 50 Ohms                       |
| Contact Material and Plating  | Beryllium Copper, Gold        | Beryllium Copper, Gold        |
| Contact Plating Specification | MIL-G-45204, Type II, Class 2 | MIL-G-45204, Type II, Class 2 |
| Dielectric Type               | Teflon                        | Teflon                        |
| Body Material and Plating     | Stainless Steel, Gold         | Stainless Steel, Gold         |
| Body Plating Specification    | MIL-G-45204                   | MIL-G-45204                   |

**Compliance Certifications** (see [product page](#) for current document)

**Plotted and Other Data**

Notes:

- Values at 25°C, sea level.

Click the following link (or enter part number in "SEARCH" on website) to obtain additional part information including price, inventory and certifications: [SMA Female 2 Hole Flange to SMA Female 2 Hole Flange Cable 36 Inch Length Using RG402 Coax PE3525-36](#)



SMA Female 2 Hole Flange to SMA Female 2 Hole Flange Cable 36 Inch Length Using RG402 Coax

RF Cable Assemblies Technical Data Sheet

PE3525-36

**How to Order**

Part Number Configuration:

**PE3525**

- **xx**

**uu**

Unit of Measure:  
cm = Centimeters  
<blank> = Inches  
Length  
Base Number

Example: PE3525-12 = 12 inches long cable  
PE3525-100cm = 100 cm long cable

SMA Female 2 Hole Flange to SMA Female 2 Hole Flange Cable 36 Inch Length Using RG402 Coax from Pasternack Enterprises has same day shipment for domestic and International orders. Our RF, microwave and millimeter wave products maintain a 99.4% availability and are part of the broadest selection in the industry.

Click the following link (or enter part number in "SEARCH" on website) to obtain additional part information including price, inventory and certifications: [SMA Female 2 Hole Flange to SMA Female 2 Hole Flange Cable 36 Inch Length Using RG402 Coax PE3525-36](#)

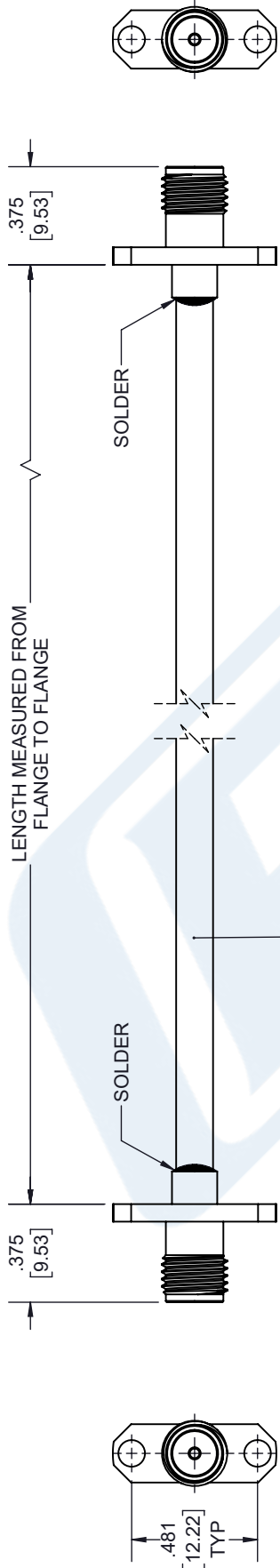
URL: <https://www.pasternack.com/sma-female-sma-female-rg402u-cable-assembly-pe3525-36-p.aspx>

The information contained in this document is accurate to the best of our knowledge and representative of the part described herein. It may be necessary to make modifications to the part and/or the documentation of the part, in order to implement improvements. Pasternack reserves the right to make such changes as required. Unless otherwise stated, all specifications are nominal. Pasternack does not make any representation or warranty regarding the suitability of the part described herein for any particular purpose, and Pasternack does not assume any liability arising out of the use of any part or documentation.

# PE3525-36 CAD Drawing

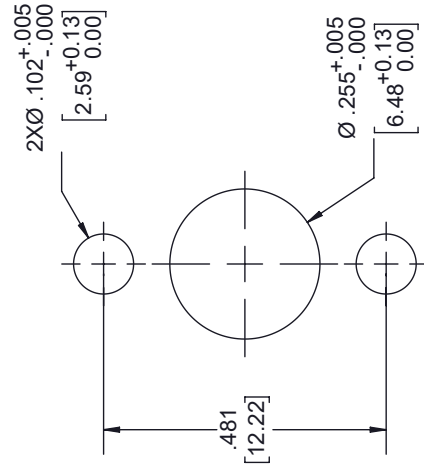
SMA Female 2 Hole Flange to SMA Female 2 Hole Flange  
Cable 36 Inch Length Using RG402 Coax

| REVISIONS |             |           |          |
|-----------|-------------|-----------|----------|
| REV.      | DESCRIPTION | DATE      | APPROVED |
| A         | PCR PE3525  | 9/28/2020 | S. ELLIS |



SMA FEMALE  
2 HOLE FLANGE MOUNTING

SMA FEMALE  
2 HOLE FLANGE MOUNTING



UNLESS OTHERWISE SPECIFIED  
LEADING DIMENSIONS ARE INCHES  
DIMENSIONS IN [ ] ARE MILLIMETERS

TOLERANCES:  
 .X = ±.2 [ .508]  
 .XX = ±.02 [ .51]  
 .XXX = ±.005 [ .13]  
 ANGLES ± 1°

CABLE LENGTH (L), TOLERANCES:  
 L ≤ 12 [305] = +1 [25] / -0  
 12 [305] < L ≤ 60 [1524] = +2 [51] / -0  
 60 [1524] < L ≤ 120 [3048] = +4 [102] / -0  
 120 [3048] < L ≤ 300 [7620] = +6 [152] / -0  
 300 [7620] < L = +5% / -0

ALL DIMENSIONS SHOWN  
ARE FOR REFERENCE ONLY.

THIRD-ANGLE PROJECTION

THE INFORMATION AND  
DESIGN IN THIS DOCUMENT  
IS THE PROPERTY OF  
PASTERNAK CORPORATION  
ALL RIGHTS RESERVED.

SHEET 1 OF 1

SCALE N/A

REV A

**PE PASTERNAK**  
an INFINITE brand

Pasternack Enterprises, Inc.  
P. O. Box 16759, Irvine, CA 92623.  
Phone: 1.949.261.1920 | 1.866.727.8376  
Fax: 1.949.261.7451  
Website: www.pasternack.com  
E-mail: sales@pasternack.com

ITEM NO. PE3525

SIZE A

CAGE CODE 53919

DRAWN BY K.DANG

THESE COMMODITIES, TECHNOLOGY OR SOFTWARE WERE EXPORTED FROM THE UNITED STATES IN ACCORDANCE WITH THE EXPORT ADMINISTRATION REGULATIONS. DIVERSION CONTRARY TO U.S. LAW PROHIBITED.