

SMA Male to MCX Plug Right Angle Cable Using RG316-DS Coax with HeatShrink



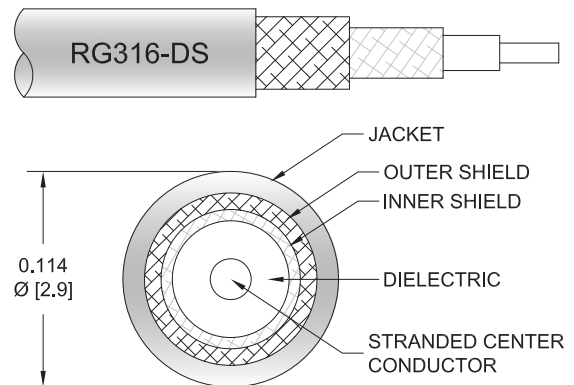
PE35437/HS

Configuration

- Connector 1: SMA Male
- Connector 2: MCX Plug Right Angle
- Cable Type: RG316-DS
- Coax Flex Type: Flexible

Features

- Max Frequency 3 GHz
- 70% Phase Velocity
- Double Shielded
- FEP Jacket



Applications

- General Purpose
- Laboratory Use

Description

Pasternack's PE35437/HS SMA male to MCX plug right angle cable using RG316-DS coax is part of our full line of RF components available for same-day shipping. Pasternack's flexible RF cable assemblies are ideal for applications where tight bends and flexure are required. This Pasternack SMA to MCX cable assembly has a male to plug gender configuration with 50 ohm flexible RG316-DS coax. The PE35437/HS SMA male to MCX plug cable assembly operates to 3 GHz. The right angle MCX interface on the RG316-DS cable allows for easier connections in tight spaces. The double shielding of this Pasternack cable assembly provides excellent shielding effectiveness.

Custom versions of most RF cable assemblies can be built and shipped same day. Custom cable assembly lengths can be obtained by specifying the desired length on the web site at time of order or by contacting a sales representative. Other available RF cable assembly value added services include connector orientation or clocking, heat shrink booting and custom labeling. RF testing can also be performed to document the electrical performance of your cable assembly.

Electrical Specifications

Description	Minimum	Typical	Maximum	Units
Frequency Range	DC		3	GHz
VSWR		1.4:1		
Velocity of Propagation		70		%
Capacitance		29.4 [96.46]		pF/ft [pF/m]

Specifications by Frequency

SMA Male to MCX Plug Right Angle Cable
Using RG316-DS Coax with HeatShrink



PE35437/HS

Part Number	Length	Description	F1	F2	F3	F4	F5	Units	Weight (lbs)
			Frequency		100	250	500	1000	
PE35437/HS	Custom Lengths Available	Insertion Loss (Typ.)	0.08	0.13	0.194	0.29	0.535	dB/ft	
			0.27	0.42	0.64	0.96	1.76	dB/m	
PE35437/HS-6	6 inch	Insertion Loss (Typ.)	0.35	0.37	0.4	0.45	0.57	dB	0.026
PE35437/HS-12	12 inch	Insertion Loss (Typ.)	0.39	0.43	0.5	0.59	0.84	dB	0.033
PE35437/HS-24	24 inch	Insertion Loss (Typ.)	0.47	0.56	0.69	0.88	1.37	dB	0.048
PE35437/HS-36	36 inch	Insertion Loss (Typ.)	0.55	0.69	0.89	1.17	1.91	dB	0.062
PE35437/HS-48	48 inch	Insertion Loss (Typ.)	0.63	0.82	1.08	1.46	2.44	dB	0.076

The insertion loss data for the base model does not include loss due to the connectors. Each length includes insertion loss due to the connectors.

Loss due to Connector 1: 0.1 dB
 Loss due to Connector 2: 0.2 dB
 Base Weight: 0.033 pounds
 Additional Weight per Inch: 0.00117 pounds

Mechanical Specifications

Cable Assembly

Weight 0.033 lbs [14.97 g]

Cable

Cable Type RG316-DS
 Impedance 50 Ohms
 Inner Conductor Type Stranded
 Inner Conductor Material and Plating Copper Clad Steel, Silver
 Dielectric Type PTFE
 Number of Shields 2
 Shield Layer 1 Silver Plated Copper Braid
 Shield Layer 2 Silver Plated Copper Braid
 Jacket Material FEP, Tan
 Jacket Diameter 0.114 in [2.9 mm]
 One Time Minimum Bend Radius 0.59 in [14.99 mm]

SMA Male to MCX Plug Right Angle Cable Using RG316-DS Coax with HeatShrink



PE35437/HS

Connectors

Description	Connector 1	Connector 2
Type	SMA Male	MCX Plug Right Angle
Specification	MIL-STD-348A	
Impedance	50 Ohms	50 Ohms
Configuration	Straight	Right Angle
Contact Material and Plating	Brass, Gold	
Contact Plating Specification	30 µin minimum	
Dielectric Type	PTFE	
Body Material and Plating	Brass, Nickel	Brass, Nickel
Body Plating Specification	100 µin minimum	
Coupling Nut Material and Plating	Brass, Nickel	
Coupling Nut Plating Specification	100 µin minimum	
Hex Size	5/16 in	
Torque	5 in-lbs 0.57 Nm	

Environmental Specifications

Compliance Certifications (see [product page](#) for current document)

Plotted and Other Data

Notes:

SMA Male to MCX Plug Right Angle Cable Using RG316-DS Coax with HeatShrink



PE35437/HS

Typical Performance Data

How to Order

Part Number Configuration:

PE35437/HS - xx uu

Unit of Measure:
cm = Centimeters
<blank> = Inches

Length

Base Number

Example: PE35437/HS-12 = 12 inches long cable
PE35437/HS-100cm = 100 cm long cable

SMA Male to MCX Plug Right Angle Cable Using RG316-DS Coax with HeatShrink from Pasternack Enterprises has same day shipment for domestic and International orders. Our RF, microwave and millimeter wave products maintain a 99.4% availability and are part of the broadest selection in the industry.

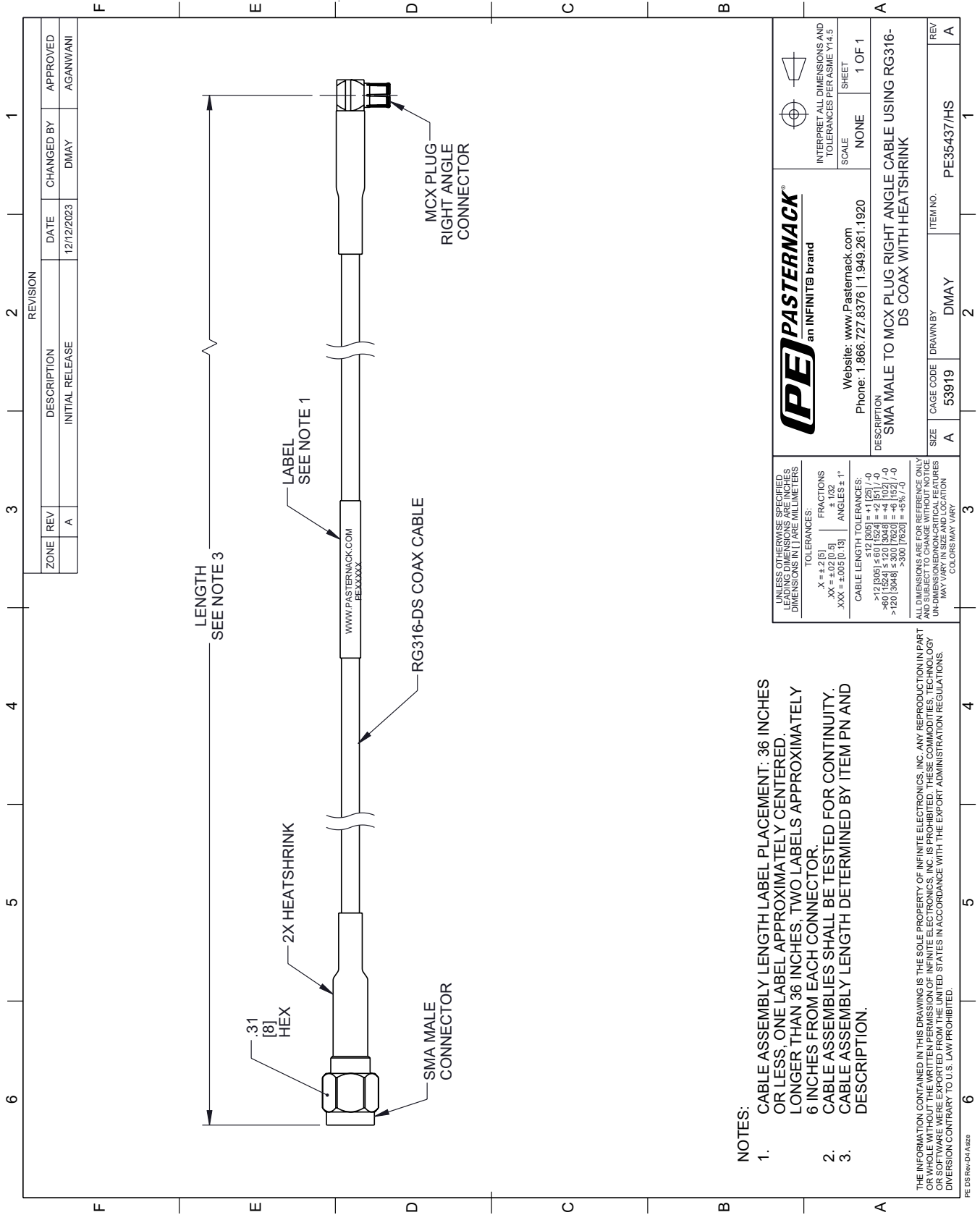
Click the following link (or enter part number in "SEARCH" on website) to obtain additional part information including price, inventory and certifications: [SMA Male to MCX Plug Right Angle Cable Using RG316-DS Coax with HeatShrink PE35437/HS](https://www.pasternack.com/sma-male-to-mcx-plug-right-angle-cable-using-rg316-ds-coax-with-heatshrink-pe35437-hs)

URL: <https://www.pasternack.com/sma-male-to-mcx-plug-cable-using-rg316-ds-with-heatshrink-pe35437-hs-p.aspx>

The information contained within this document is accurate to the best of our knowledge and representative of the part described herein. It may be necessary to make modifications to the part and/or the documentation of the part in order to implement improvements. Pasternack Enterprises reserves the right to make such changes as required. Unless otherwise stated, all specifications are nominal. Pasternack Enterprises does not make any representation or warranty regarding the suitability of the part described herein for any particular purpose, and Pasternack Enterprises does not assume liability arising out of the use of any part or document.

PE35437/HS CAD Drawing

SMA Male to MCX Plug Right Angle Cable Using RG316-DS Coax with HeatShrink



NOTES:

1. CABLE ASSEMBLY LENGTH LABEL PLACEMENT: 36 INCHES OR LESS, ONE LABEL APPROXIMATELY CENTERED. LONGER THAN 36 INCHES, TWO LABELS APPROXIMATELY 6 INCHES FROM EACH CONNECTOR.
2. CABLE ASSEMBLIES SHALL BE TESTED FOR CONTINUITY.
3. CABLE ASSEMBLY LENGTH DETERMINED BY ITEM PN AND DESCRIPTION.

THE INFORMATION CONTAINED IN THIS DRAWING IS THE SOLE PROPERTY OF INFINITE ELECTRONICS, INC. ANY REPRODUCTION IN PART OR WHOLE WITHOUT THE WRITTEN PERMISSION OF INFINITE ELECTRONICS, INC. IS PROHIBITED. THESE COMMODITY TECHNOLOGY OR SOFTWARE WERE EXPORTED FROM THE UNITED STATES IN ACCORDANCE WITH THE EXPORT ADMINISTRATION REGULATIONS. DIVERSION CONTRARY TO U.S. LAW PROHIBITED.

UNLESS OTHERWISE SPECIFIED, LEADING DIMENSIONS ARE INCHES, DIMENSIONS IN [] ARE MILLIMETERS.

TOLERANCES:

.X ± .2 [5] | FRACTIONS ± .132

.XX ± .02 [0.5] | ANGLES ± 1°

.XXX ± .005 [0.13]

CABLE LENGTH TOLERANCES:

≤ 12 [305] = +1 [25] / -0

> 12 [305] ≤ 60 [1524] = +2 [51] / -0

> 60 [1524] ≤ 300 [7620] = +4 [102] / -0

> 300 [7620] = +5% / -0

ALL DIMENSIONS ARE FOR REFERENCE ONLY AND SUBJECT TO CHANGE WITHOUT NOTICE. UN-DIMENSIONED NON-CRITICAL FEATURES MAY VARY IN SIZE AND LOCATION. CALCULATED YEAR.

<p>PASTERNAK an INFINIT® brand</p>		<p>INTERPRET ALL DIMENSIONS AND TOLERANCES PER ASME Y14.5</p>
Website: www.Pasternack.com Phone: 1.866.727.8376 1.949.261.1920		SCALE: NONE SHEET: 1 OF 1
DESCRIPTION: SMA MALE TO MCX PLUG RIGHT ANGLE CABLE USING RG316-DS COAX WITH HEATSHRINK		
SIZE: A	CAGE CODE: 53919	DRAWN BY: DMAY
REV: A	ITEM NO.: PE35437/HS	SHEET: 1 OF 1