

## BNC Male to BNC Female Bulkhead Cable Using RG223 Coax with HeatShrink, LF Solder



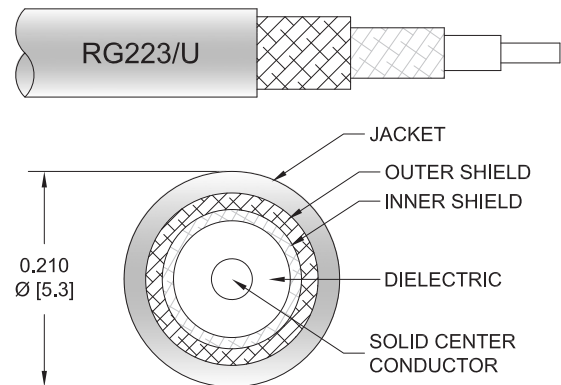
### PE3557LF/HS

#### Configuration

- Connector 1: BNC Male
- Connector 2: BNC Female Bulkhead
- Cable Type: RG223
- Coax Flex Type: Flexible

#### Features

- Max Frequency 4 GHz
- 66% Phase Velocity
- Double Shielded
- PVC Jacket



#### Applications

- General Purpose
- Laboratory Use

#### Description

Pasternack's PE3557LF/HS BNC male to BNC female bulkhead cable using RG223 coax is part of our full line of RF components available for same-day shipping. Pasternack's flexible RF cable assemblies are ideal for applications where tight bends and flexure are required. This Pasternack BNC to BNC cable assembly has a male to female gender configuration with 50 ohm flexible RG223 coax. The PE3557LF/HS BNC male to BNC female cable assembly operates to 4 GHz. Our RF cable assembly with BNC bulkhead interface allows designers to create external connections on their product enclosures, and can be used in a variety of other rack mount and panel mount applications. The double shielding of this Pasternack cable assembly provides excellent shielding effectiveness.

Custom versions of most RF cable assemblies can be built and shipped same day. Custom cable assembly lengths can be obtained by specifying the desired length on the web site at time of order or by contacting a sales representative. Other available RF cable assembly value added services include connector orientation or clocking, heat shrink booting and custom labeling. RF testing can also be performed to document the electrical performance of your cable assembly.

#### Electrical Specifications

| Description             | Minimum | Typical       | Maximum | Units        |
|-------------------------|---------|---------------|---------|--------------|
| Frequency Range         | DC      |               | 4       | GHz          |
| VSWR                    |         |               | 1.4:1   |              |
| Velocity of Propagation |         | 66            |         | %            |
| Capacitance             |         | 30.8 [101.05] |         | pF/ft [pF/m] |
| Operating Voltage (AC)  |         |               | 500     | Vrms         |

#### Specifications by Frequency

## BNC Male to BNC Female Bulkhead Cable Using RG223 Coax with HeatShrink, LF Solder



### PE3557LF/HS

| Part Number    | Length                   | Description           | F1        | F2   | F3   | Units | Weight (lbs) |
|----------------|--------------------------|-----------------------|-----------|------|------|-------|--------------|
|                |                          |                       | Frequency |      |      | 500   |              |
| PE3557LF/HS    | Custom Lengths Available | Insertion Loss (Typ.) | 0.09      | 0.13 | 0.29 | dB/ft |              |
|                |                          |                       | 0.3       | 0.43 | 0.96 | dB/m  |              |
| PE3557LF/HS-12 | 12 inch                  | Insertion Loss (Typ.) | 0.29      | 0.33 | 0.49 | dB    | 0.102        |
| PE3557LF/HS-24 | 24 inch                  | Insertion Loss (Typ.) | 0.38      | 0.46 | 0.78 | dB    | 0.134        |
| PE3557LF/HS-36 | 36 inch                  | Insertion Loss (Typ.) | 0.47      | 0.59 | 1.07 | dB    | 0.165        |
| PE3557LF/HS-60 | 60 inch                  | Insertion Loss (Typ.) | 0.65      | 0.85 | 1.65 | dB    | 0.227        |
| PE3557LF/HS-72 | 72 inch                  | Insertion Loss (Typ.) | 0.74      | 0.98 | 1.94 | dB    | 0.258        |

The insertion loss data for the base model does not include loss due to the connectors. Each length includes insertion loss due to the connectors.

|                             |                |
|-----------------------------|----------------|
| Loss due to Connector 1:    | 0.1 dB         |
| Loss due to Connector 2:    | 0.1 dB         |
| Base Weight:                | 0.102 pounds   |
| Additional Weight per Inch: | 0.00259 pounds |

### Mechanical Specifications

#### Cable Assembly

Weight 0.102 lbs [46.27 g]

#### Cable

|                                      |                            |
|--------------------------------------|----------------------------|
| Cable Type                           | RG223                      |
| Impedance                            | 50 Ohms                    |
| Inner Conductor Type                 | Solid                      |
| Inner Conductor Material and Plating | Copper, Silver             |
| Dielectric Type                      | PE                         |
| Number of Shields                    | 2                          |
| Shield Layer 1                       | Silver Plated Copper Braid |
| Shield Layer 2                       | Silver Plated Copper Braid |
| Jacket Material                      | PVC, Black                 |
| Jacket Diameter                      | 0.209 in [5.31 mm]         |
| Repeated Minimum Bend Radius         | 1 in [25.4 mm]             |

BNC Male to BNC Female Bulkhead Cable Using RG223 Coax with HeatShrink, LF Solder



**PE3557LF/HS**

**Connectors**

| Description                        | Connector 1     | Connector 2         |
|------------------------------------|-----------------|---------------------|
| Type                               | BNC Male        | BNC Female Bulkhead |
| Specification                      | MIL-STD-348A    | MIL-STD-348A        |
| Impedance                          | 50 Ohms         | 50 Ohms             |
| Configuration                      | Straight        | Straight            |
| Contact Material and Plating       | Brass, Gold     | Brass, Gold         |
| Contact Plating Specification      | 30 µin minimum  | 30 µin minimum      |
| Dielectric Type                    | PTFE            | PTFE                |
| Body Material and Plating          | Brass, Nickel   | Brass, Nickel       |
| Body Plating Specification         | 100 µin minimum | 100 µin minimum     |
| Coupling Nut Material and Plating  | Brass, Nickel   |                     |
| Coupling Nut Plating Specification | 100 µin minimum |                     |

**Environmental Specifications**

Operating Range Temperature -40 to +80 deg C

**Compliance Certifications** (see [product page](#) for current document)

**Plotted and Other Data**

Notes:

## BNC Male to BNC Female Bulkhead Cable Using RG223 Coax with HeatShrink, LF Solder

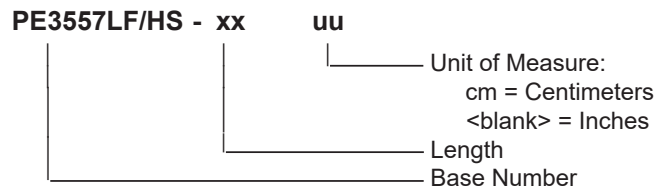


### PE3557LF/HS

#### Typical Performance Data

#### How to Order

Part Number Configuration:



Example: PE3557LF/HS-12 = 12 inches long cable  
PE3557LF/HS-100cm = 100 cm long cable

BNC Male to BNC Female Bulkhead Cable Using RG223 Coax with HeatShrink, LF Solder from Pasternack Enterprises has same day shipment for domestic and International orders. Our RF, microwave and millimeter wave products maintain a 99.4% availability and are part of the broadest selection in the industry.

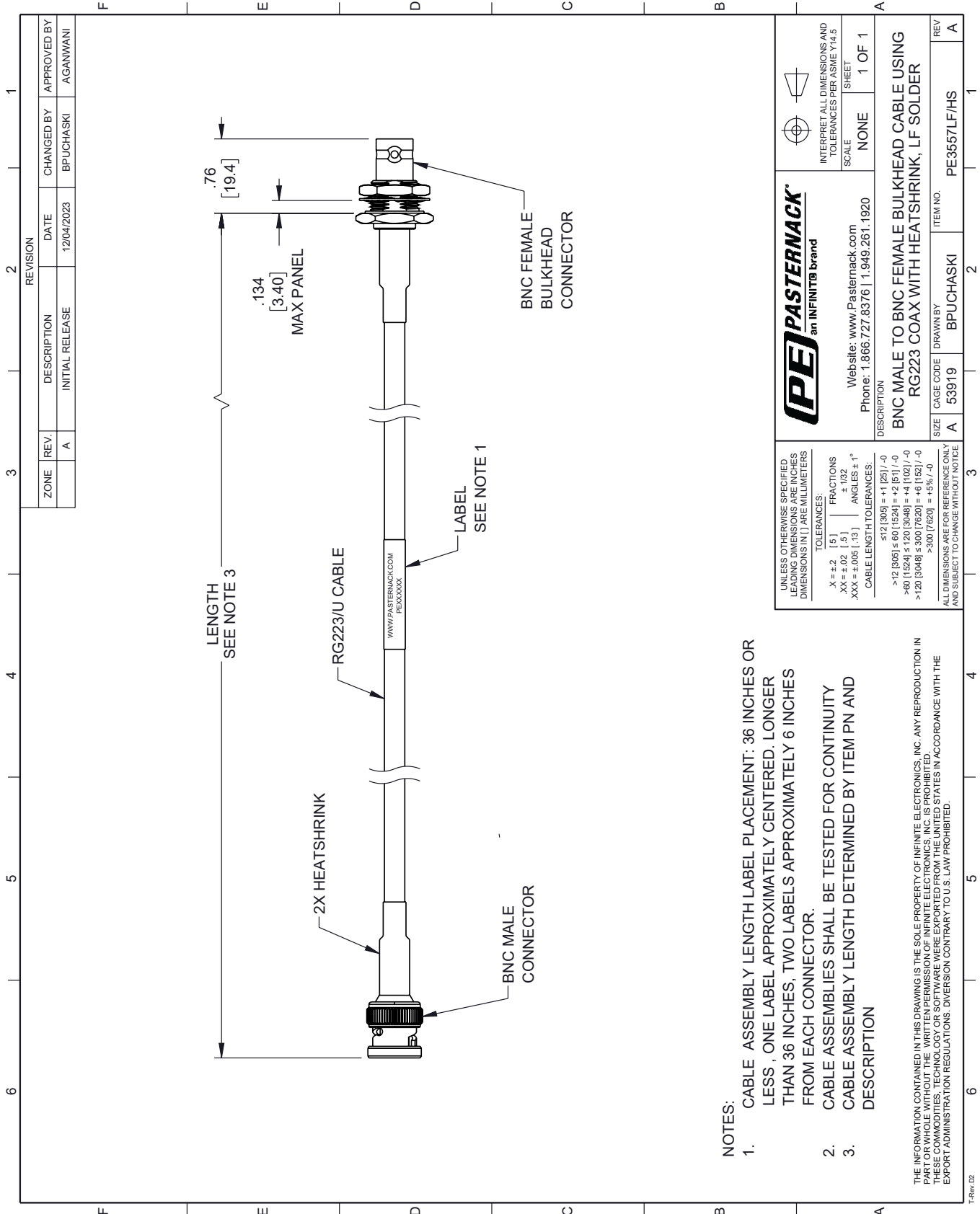
Click the following link (or enter part number in "SEARCH" on website) to obtain additional part information including price, inventory and certifications: [BNC Male to BNC Female Bulkhead Cable Using RG223 Coax with HeatShrink, LF Solder PE3557LF/HS](#)

URL: <https://www.pasternack.com/bnc-male-to-bnc-female-bulkhead-cable-using-rg223-with-heatshrink-lf-solder-pe3557lf-hs-p.aspx>

The information contained within this document is accurate to the best of our knowledge and representative of the part described herein. It may be necessary to make modifications to the part and/or the documentation of the part in order to implement improvements. Pasternack Enterprises reserves the right to make such changes as required. Unless otherwise stated, all specifications are nominal. Pasternack Enterprises does not make any representation or warranty regarding the suitability of the part described herein for any particular purpose, and Pasternack Enterprises does not assume liability arising out of the use of any part or document.

# PE3557LF/HS CAD Drawing

BNC Male to BNC Female Bulkhead Cable Using RG223 Coax with HeatShrink, LF Solder



**NOTES:**

1. CABLE ASSEMBLY LENGTH LABEL PLACEMENT: 36 INCHES OR LESS, ONE LABEL APPROXIMATELY CENTERED. LONGER THAN 36 INCHES, TWO LABELS APPROXIMATELY 6 INCHES FROM EACH CONNECTOR.
2. CABLE ASSEMBLIES SHALL BE TESTED FOR CONTINUITY
3. CABLE ASSEMBLY LENGTH DETERMINED BY ITEM PN AND DESCRIPTION

THE INFORMATION CONTAINED IN THIS DRAWING IS THE SOLE PROPERTY OF INFINITE ELECTRONICS, INC. ANY REPRODUCTION IN PART OR WHOLE WITHOUT THE WRITTEN PERMISSION OF INFINITE ELECTRONICS, INC. IS PROHIBITED. THESE COMMODITIES, TECHNOLOGY OR SOFTWARE WERE EXPORTED FROM THE UNITED STATES IN ACCORDANCE WITH THE EXPORT ADMINISTRATION REGULATIONS. DIVERSION CONTRARY TO U.S. LAW PROHIBITED.

UNLESS OTHERWISE SPECIFIED LEADING DIMENSIONS ARE INCHES DIMENSIONS IN [ ] ARE MILLIMETERS

TOLERANCES:  
 X = ±.2 [5] FRACTIONS ± 1/32  
 XX = ±.02 [0.5] ANGLES ± 1°  
 XXX = ±.005 [0.13] CABLE LENGTH TOLERANCES:  
 <12 [305] ±.01 [25] / -0  
 >12 [305] ±.01 [25] / -0  
 <60 [1524] ±.02 [0.5] / -0  
 >60 [1524] ±.02 [0.5] / -0  
 <300 [7620] ±.05 [1.27] / -0  
 >300 [7620] ±.05 [1.27] / -0

ALL DIMENSIONS ARE FOR REFERENCE ONLY AND SUBJECT TO CHANGE WITHOUT NOTICE



Website: [www.Pasternack.com](http://www.Pasternack.com)  
 Phone: 1.866.727.8376 | 1.949.261.1920

INTERPRET ALL DIMENSIONS AND TOLERANCES PER ASME Y14.5  
 SCALE NONE  
 SHEET 1 OF 1

DESCRIPTION  
**BNC MALE TO BNC FEMALE BULKHEAD CABLE USING RG223 COAX WITH HEATSHRINK, LF SOLDER**

SIZE A CAGE CODE 53919 DRAWN BY BPUCHASKI ITEM NO. PE3557LF/HS REV A