

Reverse Polarity SMA Plug Right Angle to SMA Male Cable Using RG142 Coax with HeatShrink, LF Solder



PE35911LF/HS

Configuration

- Connector 1: SMA Plug Reverse Polarity Right Angle
- Connector 2: SMA Male
- Cable Type: RG142
- Coax Flex Type: Flexible

Features

- 70% Phase Velocity
- Double Shielded
- FEP Jacket



Applications

- General Purpose
- Laboratory Use

Description

Pasternack's PE35911LF/HS reverse polarity SMA plug right angle to SMA male cable using RG142 coax is part of our full line of RF components available for same-day shipping. Pasternack's flexible RF cable assemblies are ideal for applications where tight bends and flexure are required. This Pasternack reverse polarity SMA to SMA cable assembly has a plug to male gender configuration with 50 ohm flexible RG142 coax. The right angle SMA interface on the RG142 cable allows for easier connections in tight spaces. The double shielding of this Pasternack cable assembly provides excellent shielding effectiveness.

Custom versions of most RF cable assemblies can be built and shipped same day. Custom cable assembly lengths can be obtained by specifying the desired length on the web site at time of order or by contacting a sales representative. Other available RF cable assembly value added services include connector orientation or clocking, heat shrink booting and custom labeling. RF testing can also be performed to document the electrical performance of your cable assembly.

Electrical Specifications

| Description | Minimum | Typical | Maximum | Units |
|-------------------------|---------|--------------|---------|--------------|
| Velocity of Propagation | | 70 | | % |
| Capacitance | | 29.4 [96.46] | | pF/ft [pF/m] |

Mechanical Specifications

Cable Assembly

| | |
|----------------|---------------------|
| Width/Diameter | 0.5 in [12.7 mm] |
| Weight | 0.029 lbs [13.15 g] |

Cable

| | |
|--------------------------------------|---------------------------|
| Cable Type | RG142 |
| Impedance | 50 Ohms |
| Inner Conductor Type | Solid |
| Inner Conductor Material and Plating | Copper Clad Steel, Silver |

Reverse Polarity SMA Plug Right Angle to SMA Male
Cable Using RG142 Coax with HeatShrink, LF Solder



PE35911LF/HS

| | |
|------------------------------|----------------------------|
| Dielectric Type | PTFE |
| Number of Shields | 2 |
| Shield Layer 1 | Silver Plated Copper Braid |
| Shield Layer 2 | Silver Plated Copper Braid |
| Jacket Material | FEP, Tan |
| Jacket Diameter | 0.195 in [4.95 mm] |
| Repeated Minimum Bend Radius | 1 in [25.4 mm] |

Connectors

| Description | Connector 1 | Connector 2 |
|------------------------------------|---------------------------------------|------------------|
| Type | SMA Plug Reverse Polarity Right Angle | SMA Male |
| Specification | | MIL-STD-348A |
| Impedance | 50 Ohms | 50 Ohms |
| Configuration | Right Angle | Straight |
| Contact Material and Plating | Beryllium Copper, Gold | Brass, Gold |
| Contact Plating Specification | | 50 µin minimum |
| Dielectric Type | PTFE | PTFE |
| Body Material and Plating | Brass, Nickel | Brass, Nickel |
| Body Plating Specification | | 100 µin minimum |
| Coupling Nut Material and Plating | Brass, Nickel | Brass, Nickel |
| Coupling Nut Plating Specification | | 100 µin minimum |
| Hex Size | 5/16 inch | 5/16 inch |
| Torque | 3 in-lbs 0.34 Nm | 3 in-lbs 0.34 Nm |

Environmental Specifications

Compliance Certifications (see [product page](#) for current document)

Plotted and Other Data

Notes:

Reverse Polarity SMA Plug Right Angle to SMA Male Cable Using RG142 Coax with HeatShrink, LF Solder

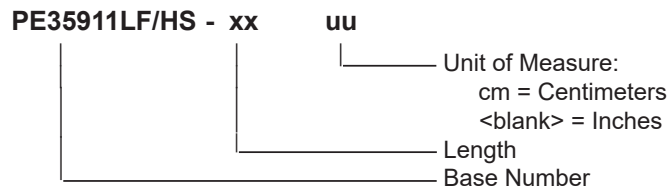


PE35911LF/HS

Typical Performance Data

How to Order

Part Number Configuration:



Example: PE35911LF/HS-12 = 12 inches long cable
PE35911LF/HS-100cm = 100 cm long cable

Reverse Polarity SMA Plug Right Angle to SMA Male Cable Using RG142 Coax with HeatShrink, LF Solder from Pasternack Enterprises has same day shipment for domestic and International orders. Our RF, microwave and millimeter wave products maintain a 99.4% availability and are part of the broadest selection in the industry.

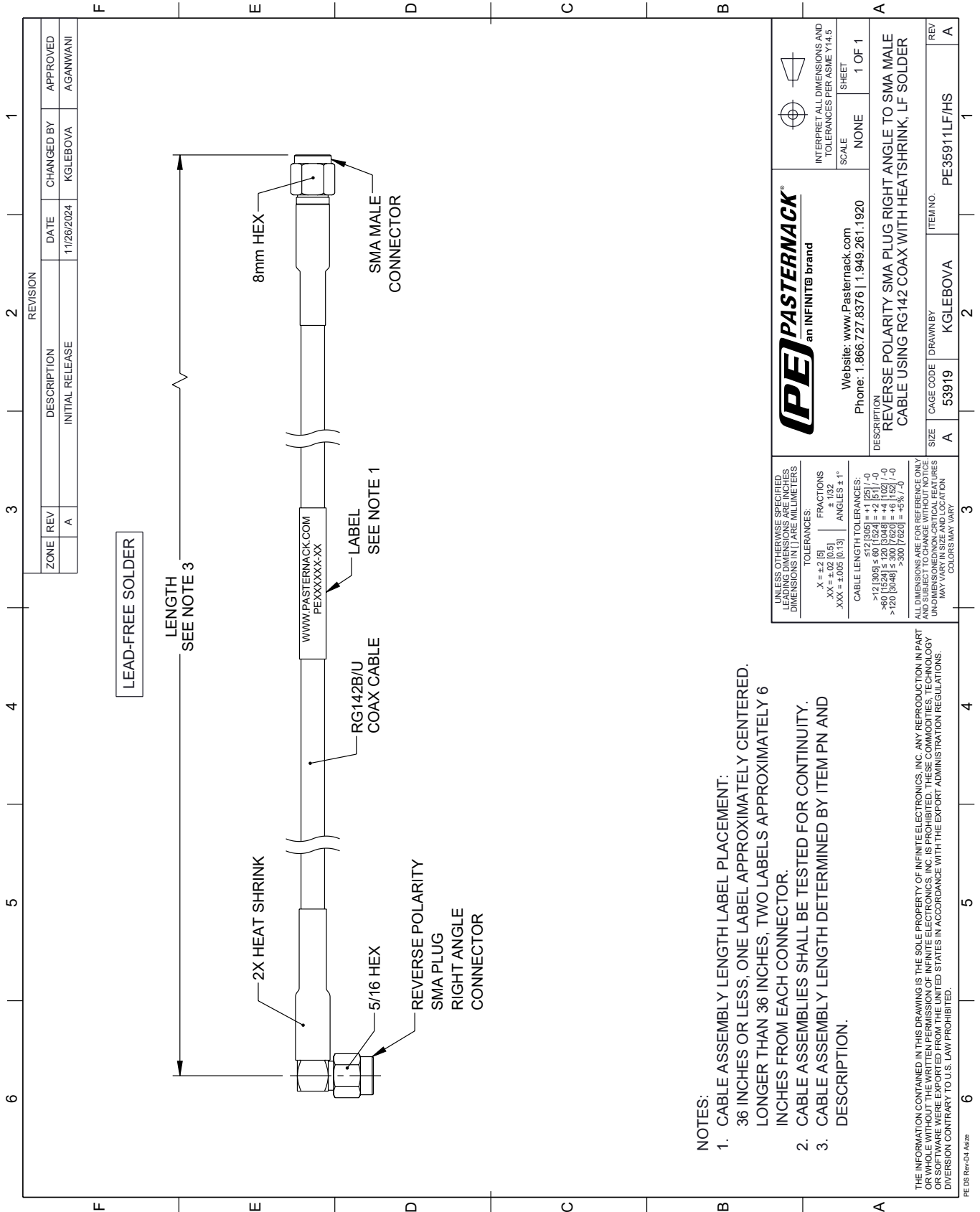
Click the following link (or enter part number in "SEARCH" on website) to obtain additional part information including price, inventory and certifications: [Reverse Polarity SMA Plug Right Angle to SMA Male Cable Using RG142 Coax with HeatShrink, LF Solder PE35911LF/HS](#)

URL: <https://www.pasternack.com/reverse-polarity-sma-plug-right-angle-to-sma-male-cable-using-rg142-with-heatshrink-lf-solder-pe35911lf-hs-p.aspx>

The information contained within this document is accurate to the best of our knowledge and representative of the part described herein. It may be necessary to make modifications to the part and/or the documentation of the part in order to impliment improvements. Pasternack Enterprises reserves the right to make such changes as required. Unless otherwise stated, all specifications are nominal. Pasternack Enterprises does not make any representation or warranty regarding the suitability of the part described herein for any particular purpose, and Pasternack Enterprises does not assume liability arising out of the use of any part or document.

PE35911LF/HS CAD Drawing

Reverse Polarity SMA Plug Right Angle to SMA Male Cable Using RG142 Coax with HeatShrink, LF Solder



- NOTES:
- CABLE ASSEMBLY LENGTH LABEL PLACEMENT: 36 INCHES OR LESS, ONE LABEL APPROXIMATELY CENTERED. LONGER THAN 36 INCHES, TWO LABELS APPROXIMATELY 6 INCHES FROM EACH CONNECTOR.
 - CABLE ASSEMBLIES SHALL BE TESTED FOR CONTINUITY.
 - CABLE ASSEMBLY LENGTH DETERMINED BY ITEM PN AND DESCRIPTION.