

75 Ohm BNC Male to Straight Cut Lead Cable Using 75 Ohm RG179 Coax

PE38438



Configuration

- Connector 1: BNC Male
- Connector 2: Straight Cut Lead
- Cable Type: RG179
- Coax Flex Type: Flexible

Features

- 70% Phase Velocity
- FEP Jacket

Applications

- General Purpose
- Laboratory Use

Description

Pasternack's PE38438 75 ohm BNC male to straight cut lead cable using 75 ohm RG179 coax is part of our full line of RF components available for same-day shipping. Pasternack's flexible RF cable assemblies are ideal for applications where tight bends and flexure are required.

Custom versions of most RF cable assemblies can be built and shipped same day. Custom cable assembly lengths can be obtained by specifying the desired length on the web site at time of order or by contacting a sales representative. Other available RF cable assembly value added services include connector orientation or clocking, heat shrink booting and custom labeling. RF testing can also be performed to document the electrical performance of your cable assembly.

Electrical Specifications

Description	Minimum	Typical	Maximum	Units
Velocity of Propagation		70		%
Capacitance		19.4 [63.65]		pF/ft [pF/m]

Mechanical Specifications

Cable Assembly

Weight 0.036 lbs [16.33 g]

Cable

Cable Type	RG179
Impedance	75 Ohms
Inner Conductor Type	Stranded
Inner Conductor Material and Plating	Copper Clad Steel, Silver
Dielectric Type	PTFE
Number of Shields	1
Shield Layer 1	Silver Plated Copper Braid
Jacket Material	FEP, Tan
Jacket Diameter	0.1 in [2.54 mm]
Repeated Minimum Bend Radius	0.4 in [10.16 mm]

75 Ohm BNC Male to Straight Cut Lead Cable Using 75 Ohm RG179 Coax

PE38438



Connectors

Description	Connector 1	Connector 2
Type	BNC Male	Straight Cut Lead
Impedance	75 Ohms	0 Ohms
Configuration	Straight	Straight
Contact Material and Plating	Brass, Gold	
Contact Plating Specification	30 µin minimum	
Dielectric Type	PTFE	
Body Material and Plating	Brass, Nickel	
Body Plating Specification	100 µin minimum	
Coupling Nut Material and Plating	Brass, Nickel	
Coupling Nut Plating Specification	100 µin minimum	

Environmental Specifications

Compliance Certifications (see [product page](#) for current document)

Plotted and Other Data

Notes:

75 Ohm BNC Male to Straight Cut Lead Cable Using 75 Ohm RG179 Coax

PE38438



Typical Performance Data

How to Order

Part Number Configuration:

PE38438

- xx

uu

Unit of Measure:
cm = Centimeters
<blank> = Inches

Length
Base Number

Example: PE38438-12 = 12 inches long cable
PE38438-100cm = 100 cm long cable

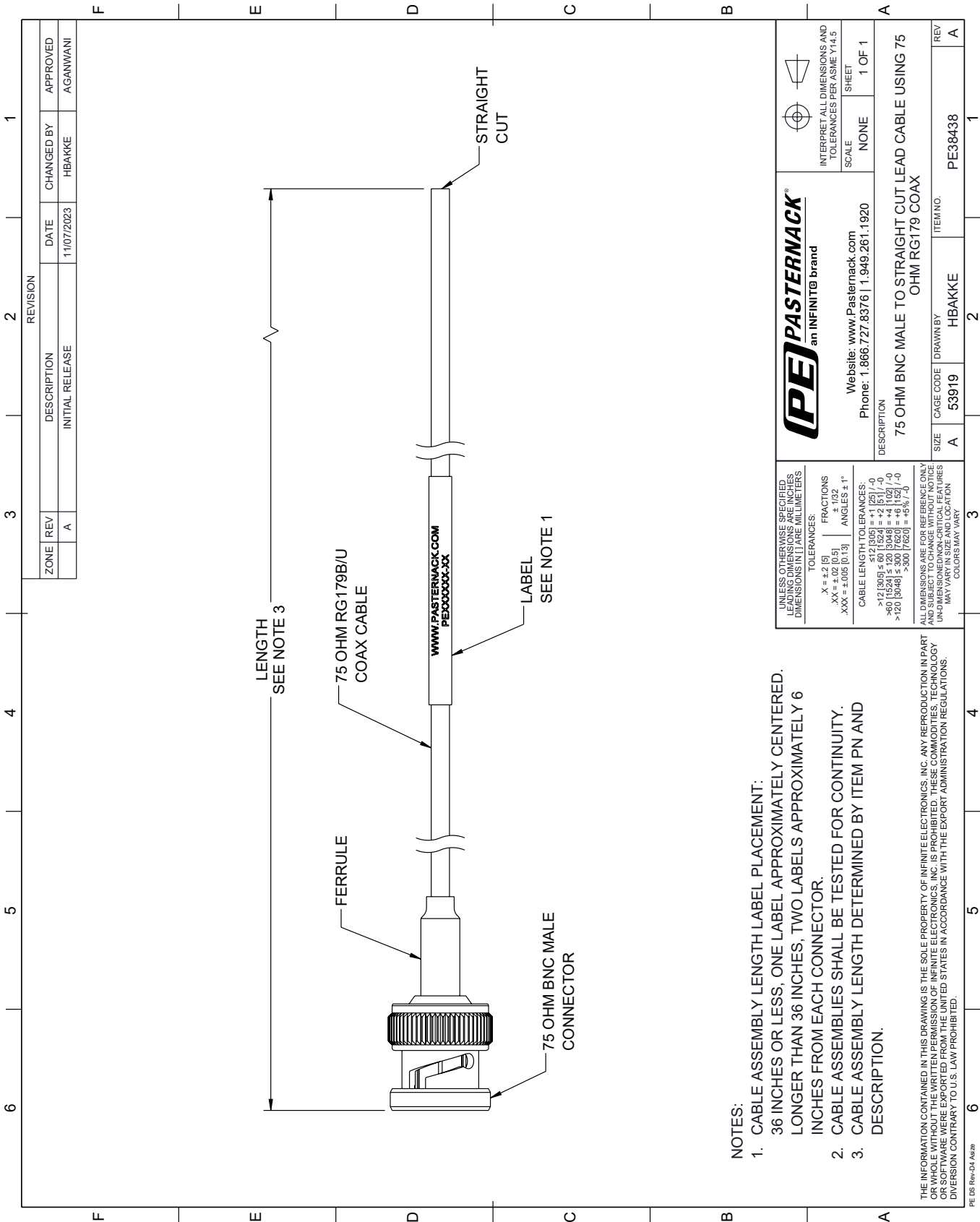
75 Ohm BNC Male to Straight Cut Lead Cable Using 75 Ohm RG179 Coax from Pasternack Enterprises has same day shipment for domestic and International orders. Our RF, microwave and millimeter wave products maintain a 99.4% availability and are part of the broadest selection in the industry.

Click the following link (or enter part number in "SEARCH" on website) to obtain additional part information including price, inventory and certifications: [75 Ohm BNC Male to Straight Cut Lead Cable Using 75 Ohm RG179 Coax PE38438](https://www.pasternack.com/75-ohm-bnc-male-to-straight-cut-lead-cable-using-rg179-pe38438-p.aspx)

URL: <https://www.pasternack.com/75-ohm-bnc-male-to-straight-cut-lead-cable-using-rg179-pe38438-p.aspx>

The information contained within this document is accurate to the best of our knowledge and representative of the part described herein. It may be necessary to make modifications to the part and/or the documentation of the part in order to implement improvements. Pasternack Enterprises reserves the right to make such changes as required. Unless otherwise stated, all specifications are nominal. Pasternack Enterprises does not make any representation or warranty regarding the suitability of the part described herein for any particular purpose, and Pasternack Enterprises does not assume liability arising out of the use of any part or document.

PE38438 CAD Drawing
75 Ohm BNC Male to Straight Cut Lead Cable Using 75 Ohm RG179 Coax



- NOTES:
- 1. CABLE ASSEMBLY LENGTH LABEL PLACEMENT: 36 INCHES OR LESS, ONE LABEL APPROXIMATELY CENTERED. LONGER THAN 36 INCHES, TWO LABELS APPROXIMATELY 6 INCHES FROM EACH CONNECTOR.
 - 2. CABLE ASSEMBLIES SHALL BE TESTED FOR CONTINUITY.
 - 3. CABLE ASSEMBLY LENGTH DETERMINED BY ITEM PN AND DESCRIPTION.

THE INFORMATION CONTAINED IN THIS DRAWING IS THE SOLE PROPERTY OF INFINITE ELECTRONICS, INC. ANY REPRODUCTION IN PART OR WHOLE WITHOUT THE WRITTEN PERMISSION OF INFINITE ELECTRONICS, INC. IS PROHIBITED. THESE COMMODITIES, TECHNOLOGY OR SOFTWARE WERE EXPORTED FROM THE UNITED STATES IN ACCORDANCE WITH THE EXPORT ADMINISTRATION REGULATIONS. DIVISION CONTRARY TO U.S. LAW PROHIBITED.

PE 08 Rev-D4 Adda