



## SMA Male Right Angle to SMA Male Right Angle Cable Using RG316-DS Coax with HeatShrink, LF Solder

### RF Cable Assemblies Technical Data Sheet

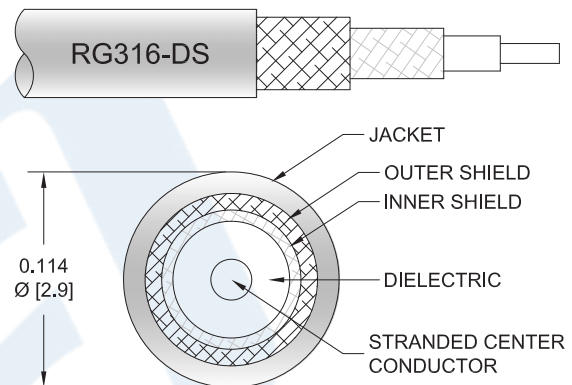
**PE3987LF/HS**

#### Configuration

- Connector 1: SMA Male Right Angle
- Connector 2: SMA Male Right Angle
- Cable Type: RG316-DS
- Coax Flex Type: Flexible

#### Features

- Max Frequency 3 GHz
- 70% Phase Velocity
- Double Shielded
- FEP Jacket



#### Applications

- General Purpose
- Laboratory Use

#### Description

Pasternack's PE3987LF/HS SMA male right angle to SMA male right angle cable using RG316-DS coax is part of our full line of RF components available for same-day shipping. Pasternack's flexible RF cable assemblies are ideal for applications where tight bends and flexure are required. This Pasternack SMA to SMA cable assembly has a male to male gender configuration with 50 ohm flexible RG316-DS coax. The PE3987LF/HS SMA male to SMA male cable assembly operates to 3 GHz. The right angle SMA interfaces on the RG316-DS cable allow for easier connections in tight spaces. The double shielding of this Pasternack cable assembly provides excellent shielding effectiveness.

Custom versions of most RF cable assemblies can be built and shipped same day. Custom cable assembly lengths can be obtained by specifying the desired length on the web site at time of order or by contacting a sales representative. Other available RF cable assembly value added services include connector orientation or clocking, heat shrink booting and custom labeling. RF testing can also be performed to document the electrical performance of your cable assembly.

Click the following link (or enter part number in "SEARCH" on website) to obtain additional part information including price, inventory and certifications: [SMA Male Right Angle to SMA Male Right Angle Cable Using RG316-DS Coax with Heat-Shrink, LF Solder PE3987LF/HS](#)



SMA Male Right Angle to SMA Male Right Angle Cable  
Using RG316-DS Coax with HeatShrink, LF Solder

**RF Cable Assemblies Technical Data Sheet**

**PE3987LF/HS**

**Electrical Specifications**

Description	Minimum	Typical	Maximum	Units
Frequency Range	DC		3	GHz
VSWR			1.5:1	
Velocity of Propagation		70		%
Capacitance		29.4 [96.46]		pF/ft [pF/m]
Operating Voltage (AC)			335	Vrms

**Specifications by Frequency**

Description	F1	F2	F3	F4	F5	Units
Frequency	0.1	0.25	0.5	1	3	GHz
Insertion Loss (Typ.)	0.109	0.243	0.238	0.379	0.579	dB/ft
	0.36	0.8	0.78	1.24	1.9	dB/m

**Electrical Specification Notes:**

Insertion Loss does not include the loss of the connectors. Insertion Loss is estimated as 0.05xSQRT(fGHz) dB per connector.

**Mechanical Specifications**

**Cable Assembly**

Weight 0.049 lbs [22.23 g]

**Cable**

Cable Type RG316-DS  
 Impedance 50 Ohms  
 Inner Conductor Type Stranded  
 Inner Conductor Material and Plating Copper Clad Steel, Silver  
 Dielectric Type PTFE  
 Number of Shields 2  
 Shield Layer 1 Silver Plated Copper Braid  
 Shield Layer 2 Silver Plated Copper Braid  
 Jacket Material FEP, Tan  
 Jacket Diameter 0.114 in [2.9 mm]

Repeated Minimum Bend Radius 0.6 in [15.24 mm]

Click the following link (or enter part number in "SEARCH" on website) to obtain additional part information including price, inventory and certifications: [SMA Male Right Angle to SMA Male Right Angle Cable Using RG316-DS Coax with Heat-Shrink, LF Solder PE3987LF/HS](#)



SMA Male Right Angle to SMA Male Right Angle Cable  
Using RG316-DS Coax with HeatShrink, LF Solder

**RF Cable Assemblies Technical Data Sheet**

**PE3987LF/HS**

**Connectors**

Description	Connector 1	Connector 2
Type	SMA Male Right Angle Threaded	SMA Male Right Angle Threaded
Specification	MIL-STD-348A	MIL-STD-348A
Impedance	50 Ohms	50 Ohms
Contact Material and Plating	Brass, Gold	Brass, Gold
Contact Plating Specification	50 µin minimum	50 µin minimum
Dielectric Type	PTFE	PTFE
Body Material and Plating	Brass, Nickel	Brass, Nickel
Body Plating Specification	100 µin minimum	100 µin minimum
Coupling Nut Material and Plating	Brass, Nickel	Brass, Nickel
Coupling Nut Plating Specification	100 µin minimum	100 µin minimum
Hex Size	5/16 inch	5/16 inch
Torque	3 in-lbs [0.34 Nm]	3 in-lbs [0.34 Nm]

**Environmental Specifications**

**Temperature**

Operating Range -55 to +165 deg C

**Compliance Certifications** (see [product page](#) for current document)

**Plotted and Other Data**

Notes:

Click the following link (or enter part number in "SEARCH" on website) to obtain additional part information including price, inventory and certifications: [SMA Male Right Angle to SMA Male Right Angle Cable Using RG316-DS Coax with Heat-Shrink, LF Solder PE3987LF/HS](#)



## SMA Male Right Angle to SMA Male Right Angle Cable Using RG316-DS Coax with HeatShrink, LF Solder

### RF Cable Assemblies Technical Data Sheet

**PE3987LF/HS**

#### How to Order

Part Number Configuration:

**PE3987LF/HS - xx**

**uu**

Unit of Measure:  
cm = Centimeters  
<blank> = Inches  
Length  
Base Number

Example: PE3987LF/HS-12 = 12 inches long cable  
PE3987LF/HS-100cm = 100 cm long cable

SMA Male Right Angle to SMA Male Right Angle Cable Using RG316-DS Coax with HeatShrink, LF Solder from Pasternack Enterprises has same day shipment for domestic and International orders. Our RF, microwave and millimeter wave products maintain a 99.4% availability and are part of the broadest selection in the industry.

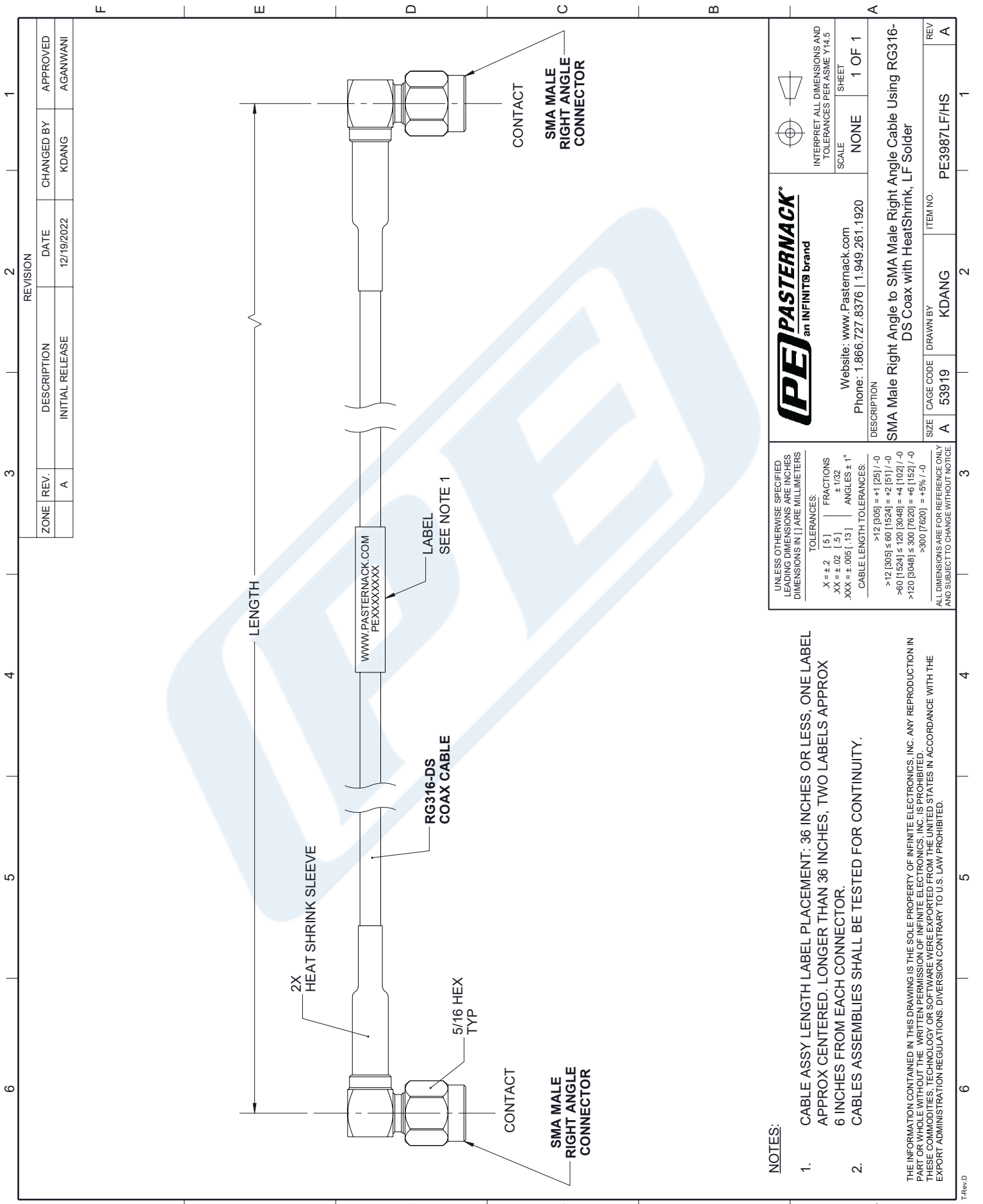
Click the following link (or enter part number in "SEARCH" on website) to obtain additional part information including price, inventory and certifications: [SMA Male Right Angle to SMA Male Right Angle Cable Using RG316-DS Coax with HeatShrink, LF Solder PE3987LF/HS](#)

URL: <https://www.pasternack.com/sma-male-right-angle-to-sma-male-cable-using-rg316-ds-with-heatshrink-lf-solder-pe3987lf-hs-p.aspx>

The information contained in this document is accurate to the best of our knowledge and representative of the part described herein. It may be necessary to make modifications to the part and/or the documentation of the part, in order to implement improvements. Pasternack reserves the right to make such changes as required. Unless otherwise stated, all specifications are nominal. Pasternack does not make any representation or warranty regarding the suitability of the part described herein for any particular purpose, and Pasternack does not assume any liability arising out of the use of any part or documentation.

# PE3987LF/HS CAD Drawing

## SMA Male Right Angle to SMA Male Right Angle Cable Using RG316-DS Coax with HeatShrink, LF Solder



**NOTES:**

1. CABLE ASSY LABEL PLACEMENT: 36 INCHES OR LESS, ONE LABEL APPROX CENTERED. LONGER THAN 36 INCHES, TWO LABELS APPROX 6 INCHES FROM EACH CONNECTOR.
2. CABLES ASSEMBLIES SHALL BE TESTED FOR CONTINUITY.

THE INFORMATION CONTAINED IN THIS DRAWING IS THE SOLE PROPERTY OF INFINITE ELECTRONICS, INC. ANY REPRODUCTION IN PART OR WHOLE WITHOUT THE WRITTEN PERMISSION OF INFINITE ELECTRONICS, INC. IS PROHIBITED. THESE COMMODITIES, TECHNOLOGY OR SOFTWARE WERE EXPORTED FROM THE UNITED STATES IN ACCORDANCE WITH THE EXPORT ADMINISTRATION REGULATIONS. DIVERSION CONTRARY TO U.S. LAW PROHIBITED.

UNLESS OTHERWISE SPECIFIED LEADING DIMENSIONS ARE INCHES DIMENSIONS IN [ ] ARE MILLIMETERS	
TOLERANCES:	FRACTIONS
X = ± 2 [ .5 ]	± 1/32
.XX = ± .02 [ .5 ]	ANGLES ± 1°
.XXX = ± .005 [ .13 ]	CABLE LENGTH TOLERANCES:
	>12 [305] = +1 [25] / -0
	>60 [1524] ≤ 60 [1524] = +2 [51] / -0
	>120 [3048] ≤ 120 [3048] = +4 [102] / -0
	>120 [3048] ≤ 300 [7620] = +6 [152] / -0
	>300 [7620] = +5% / -0
ALL DIMENSIONS ARE FOR REFERENCE ONLY AND SUBJECT TO CHANGE WITHOUT NOTICE	



Website: [www.Pasternack.com](http://www.Pasternack.com)  
Phone: 1.866.727.8376 | 1.949.261.1920

DESCRIPTION	SMA Male Right Angle to SMA Male Right Angle Cable Using RG316-DS Coax with HeatShrink, LF Solder
SCALE	NONE
SHEET	1 OF 1
INTERPRET ALL DIMENSIONS AND TOLERANCES PER ASME Y14.5	

SIZE	A	CAGE CODE	53919	DRAWN BY	KDANG	ITEM NO.	PE3987LF/HS
REV	A						

ZONE	REV.	DESCRIPTION	DATE	CHANGED BY	APPROVED
	A	INITIAL RELEASE	12/19/2022	KDANG	AGANWANI