

QMA Female Bulkhead to Reverse Polarity SMA Plug Right Angle Cable Using RG316-DS Coax with HeatShrink



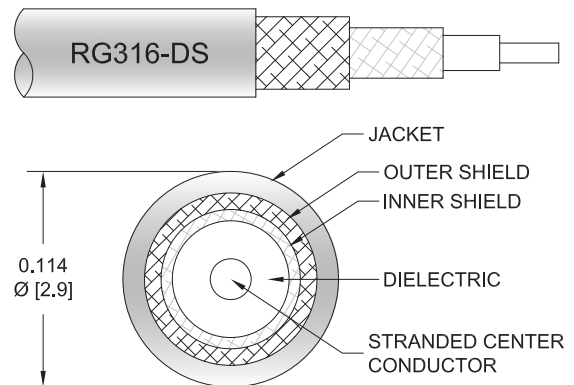
PE3C10250/HS

Configuration

- Connector 1: QMA Female Bulkhead
- Connector 2: SMA Plug Reverse Polarity Right Angle
- Cable Type: RG316-DS
- Coax Flex Type: Flexible

Features

- Shielding Effectivity > 85 dB
- 69.5% Phase Velocity
- Double Shielded
- FEP Jacket



Applications

- General Purpose
- Laboratory Use

Description

Pasternack's PE3C10250/HS QMA female bulkhead to reverse polarity SMA plug right angle cable using RG316-DS coax is part of our full line of RF components available for same-day shipping. Pasternack's flexible RF cable assemblies are ideal for applications where tight bends and flexure are required. This Pasternack QMA to reverse polarity SMA cable assembly has a female to plug gender configuration with 50 ohm flexible RG316-DS coax. The right angle SMA interface on the RG316-DS cable allows for easier connections in tight spaces. Our RF cable assembly with QMA bulkhead interface allows designers to create external connections on their product enclosures, and can be used in a variety of other rack mount and panel mount applications. The double shielding of this Pasternack cable assembly provides excellent shielding effectiveness of better than 85 dB.

Custom versions of most RF cable assemblies can be built and shipped same day. Custom cable assembly lengths can be obtained by specifying the desired length on the web site at time of order or by contacting a sales representative. Other available RF cable assembly value added services include connector orientation or clocking, heat shrink booting and custom labeling. RF testing can also be performed to document the electrical performance of your cable assembly.

Electrical Specifications

Description	Minimum	Typical	Maximum	Units
Velocity of Propagation		69.5		%
RF Shielding	85			dB
Capacitance		28.96 [95.01]		pF/ft [pF/m]
DC Resistance Inner Conductor		83.82 [275]		Ohms/1000ft [Ohms/Km]
DC Resistance Outer Conductor		5.33 [17.49]		Ohms/1000ft [Ohms/Km]

Mechanical Specifications

Cable Assembly

Width/Diameter

0.5 in [12.7 mm]

Weight

0.026 lbs [11.79 g]

QMA Female Bulkhead to Reverse Polarity SMA Plug
Right Angle Cable Using RG316-DS Coax with HeatShrink



PE3C10250/HS

Cable

Cable Type	RG316-DS
Impedance	50 Ohms
Inner Conductor Type	Stranded
Inner Conductor Material and Plating	Copper Clad Steel, Silver
Dielectric Type	PTFE
Number of Shields	2
Shield Layer 1	Silver Plated Copper Braid
Shield Layer 2	Silver Plated Copper Braid
Jacket Material	FEP, Tan
Jacket Diameter	0.114 in [2.9 mm]
One Time Minimum Bend Radius	0.59 in [14.99 mm]
Repeated Minimum Bend Radius	1.57 in [39.88 mm]

Connectors

Description	Connector 1	Connector 2
Type	QMA Female Bulkhead	SMA Plug Reverse Polarity Right Angle
Impedance	50 Ohms	50 Ohms
Configuration	Straight	Right Angle
Mating Cycles	100	
Contact Material and Plating	Beryllium Copper, Gold	Gold
Dielectric Type	PTFE	PTFE
Body Material and Plating	Brass, Tri-Metal	Brass, Nickel
Coupling Nut Material and Plating		Brass, Nickel
Hex Size		5/16 in
Torque		5 in-lbs 0.57 Nm

Environmental Specifications

Compliance Certifications (see [product page](#) for current document)

Plotted and Other Data

Notes:

QMA Female Bulkhead to Reverse Polarity SMA Plug
Right Angle Cable Using RG316-DS Coax with HeatShrink

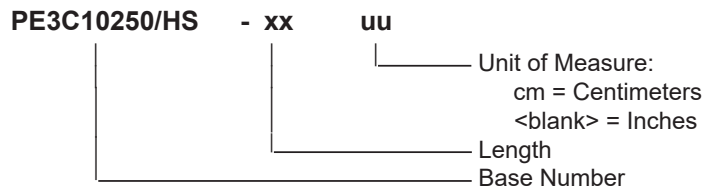


PE3C10250/HS

Typical Performance Data

How to Order

Part Number Configuration:



Example: PE3C10250/HS-12 = 12 inches long cable
PE3C10250/HS-100cm = 100 cm long cable

QMA Female Bulkhead to Reverse Polarity SMA Plug Right Angle Cable Using RG316-DS Coax with HeatShrink from Pasternack Enterprises has same day shipment for domestic and International orders. Our RF, microwave and millimeter wave products maintain a 99.4% availability and are part of the broadest selection in the industry.

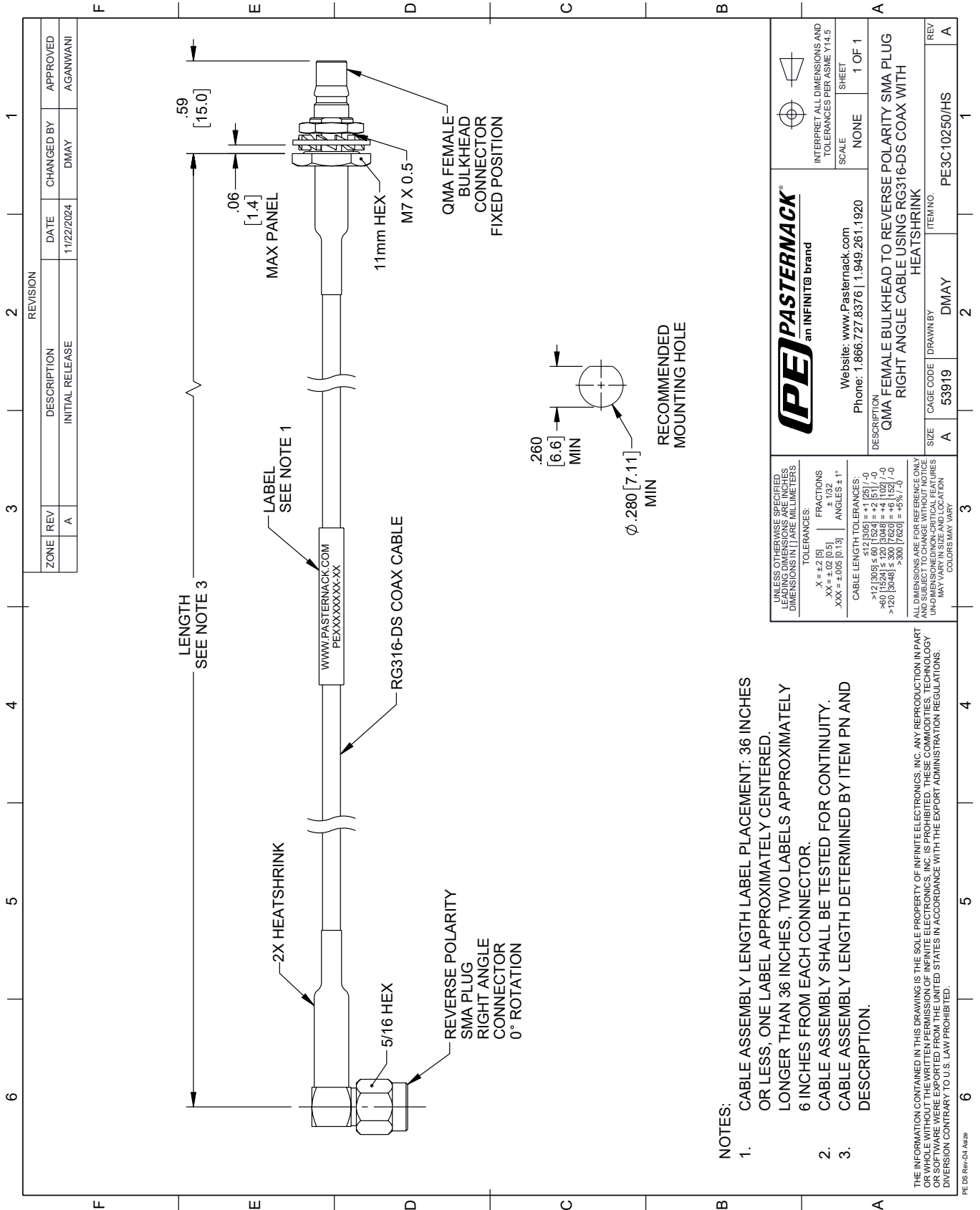
Click the following link (or enter part number in "SEARCH" on website) to obtain additional part information including price, inventory and certifications: [QMA Female Bulkhead to Reverse Polarity SMA Plug Right Angle Cable Using RG316-DS Coax with HeatShrink PE3C10250/HS](#)

URL: <https://www.pasternack.com/qma-female-bulkhead-to-reverse-polarity-sma-plug-cable-using-rg316-ds-with-heatshrink-pe3c10250-hs-p.aspx>

The information contained within this document is accurate to the best of our knowledge and representative of the part described herein. It may be necessary to make modifications to the part and/or the documentation of the part in order to impliment improvements. Pasternack Enterprises reserves the right to make such changes as required. Unless otherwise stated, all specifications are nominal. Pasternack Enterprises does not make any representation or warranty regarding the suitability of the part described herein for any particular purpose, and Pasternack Enterprises does not assume liability arising out of the use of any part or document.

PE3C10250/HS CAD Drawing

QMA Female Bulkhead to Reverse Polarity SMA Plug Right Angle Cable Using RG316-DS Coax with HeatShrink



NOTES:

1. CABLE ASSEMBLY LENGTH LABEL PLACEMENT: 36 INCHES OR LESS, ONE LABEL APPROXIMATELY CENTERED. LONGER THAN 36 INCHES, TWO LABELS APPROXIMATELY 6 INCHES FROM EACH CONNECTOR.
2. CABLE ASSEMBLY SHALL BE TESTED FOR CONTINUITY.
3. CABLE ASSEMBLY LENGTH DETERMINED BY ITEM PN AND DESCRIPTION.

THE INFORMATION CONTAINED IN THIS DRAWING IS THE SOLE PROPERTY OF INFINITE ELECTRONICS, INC. ANY REPRODUCTION IN PART OR WHOLE WITHOUT THE WRITTEN PERMISSION OF INFINITE ELECTRONICS, INC. IS PROHIBITED. THESE COMMODITIES, TECHNOLOGY OR SOFTWARE ARE EXPORTED FROM THE UNITED STATES IN ACCORDANCE WITH THE EXPORT ADMINISTRATION REGULATIONS. DIVERSION CONTRARY TO U.S. LAW PROHIBITED.

PE DS Rev-04 Add2

ZONE	REV	DESCRIPTION	DATE	CHANGED BY	APPROVED
A		INITIAL RELEASE	11/22/2024	DMAY	AGANWANI

		INTERPRET ALL DIMENSIONS AND TOLERANCES PER ASME Y14.5	
Website: www.Pasternack.com Phone: 1.866.727.8376 1.949.261.1920		SCALE	NONE
DESCRIPTION QMA FEMALE BULKHEAD TO REVERSE POLARITY SMA PLUG RIGHT ANGLE CABLE USING RG316-DS COAX WITH HEATSHRINK		SHEET	1 OF 1
SIZE	A	CAGE CODE	DMAY
ITEM NO.	53919	ITEM NO.	PE3C10250/HS
REV	A	REV	A

UNLESS OTHERWISE SPECIFIED, LEADING DIMENSIONS ARE IN INCHES. DIMENSIONS IN [] ARE MILLIMETERS.

TOLERANCES:
 .X = ±.2 [5]
 .XX = ±.02 [0.5]
 .XXX = ±.005 [0.13]

FRACTIONS
 ± 1/32

ANGLES ± 1°

CABLE LENGTH TOLERANCES:
 <12 [305] ≤ 60 [1524] = ±1 [25] / -0
 >60 [1524] ≤ 120 [3048] = ±4 [102] / -0
 >120 [3048] ≤ 300 [7620] = ±5% / -0

ALL DIMENSIONS ARE FOR REFERENCE ONLY. UNLESS OTHERWISE SPECIFIED, DIMENSIONS ARE IN INCHES. DIMENSIONS IN [] ARE MILLIMETERS. UNLESS OTHERWISE SPECIFIED, LEADING DIMENSIONS ARE IN INCHES. DIMENSIONS IN [] ARE MILLIMETERS. COLORS MAY VARY.