

Plenum N Male to N Male Low Loss Cable Using LMR-400-LLPX Coax with Times Microwave Components



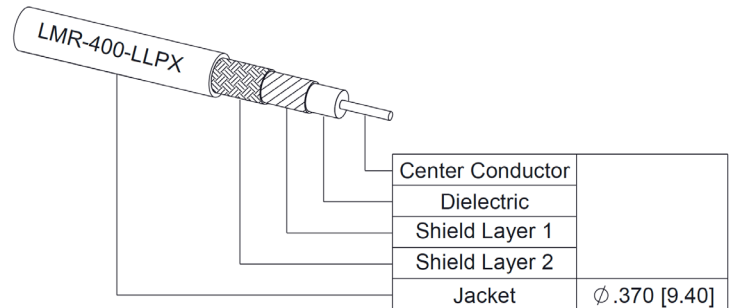
PE3C10274

Configuration

- Connector 1: N Male
- Connector 2: N Male
- Cable Type: LMR-400-LLPX
- Coax Flex Type: Flexible

Features

- Max Frequency 5.8 GHz
- Shielding Effectivity > 90 dB
- 76% Phase Velocity
- Double Shielded
- Fluoropolymer Jacket



Applications

- General Purpose
- Laboratory Use

Description

Pasternack's PE3C10274 type N male to type N male cable using LMR-400-LLPX coax is part of our full line of RF components available for same-day shipping. Pasternack's flexible RF cable assemblies are ideal for applications where tight bends and flexure are required. This Pasternack type N to type N cable assembly has a male to male gender configuration with 50 ohm flexible LMR-400-LLPX coax. The PE3C10274 type N male to type N male cable assembly operates to 5.8 GHz. The double shielding of this Pasternack cable assembly provides excellent shielding effectiveness of better than 90 dB.

Custom versions of most RF cable assemblies can be built and shipped same day. Custom cable assembly lengths can be obtained by specifying the desired length on the web site at time of order or by contacting a sales representative. Other available RF cable assembly value added services include connector orientation or clocking, heat shrink booting and custom labeling. RF testing can also be performed to document the electrical performance of your cable assembly.

Electrical Specifications

Description	Minimum	Typical	Maximum	Units
Frequency Range	DC		5.8	GHz
VSWR			1.4:1	
Velocity of Propagation		76		%
RF Shielding	90			dB
Capacitance		26.7 [87.6]		pF/ft [pF/m]

Specifications by Frequency

Plenum N Male to N Male Low Loss Cable Using LMR-400-LLPX Coax with Times Microwave Components



PE3C10274

Part Number	Length	Description	F1	F2	F3	F4	F5	Units	Weight (lbs)
			Frequency		250	500	1000	2500	
PE3C10274	Custom Lengths Available	Insertion Loss (Typ.)	0.02	0.029	0.042	0.068	0.107	dB/ft	
			0.07	0.1	0.14	0.23	0.36	dB/m	
PE3C10274-12	12 Inch	Insertion Loss (Typ.)	0.22	0.23	0.25	0.27	0.31	dB	0.296
PE3C10274-24	24 Inch	Insertion Loss (Typ.)	0.24	0.26	0.29	0.34	0.42	dB	0.401
PE3C10274-36	36 Inch	Insertion Loss (Typ.)	0.26	0.29	0.33	0.41	0.53	dB	0.505
PE3C10274-48	48 Inch	Insertion Loss (Typ.)	0.28	0.32	0.37	0.48	0.63	dB	0.609
PE3C10274-60	60 Inch	Insertion Loss (Typ.)	0.3	0.35	0.41	0.54	0.74	dB	0.713

The insertion loss data for the base model does not include loss due to the connectors. Each length includes insertion loss due to the connectors.

Loss due to Connector 1:	0.1 dB
Loss due to Connector 2:	0.1 dB
Base Weight:	0.296 pounds
Additional Weight per Inch:	0.7908 pounds

Mechanical Specifications

Cable Assembly

Width/Diameter	0.5 in [12.7 mm]
Weight	0.296 lbs [134.26 g]

Cable

Cable Type	LMR-400-LLPX
Impedance	50 Ohms
Inner Conductor Type	Solid
Inner Conductor Material and Plating	Copper Clad Aluminum
Dielectric Type	PTFE (LD)
Number of Shields	2
Shield Layer 1	Aluminum Tape
Shield Layer 2	Tinned Copper Braid
Jacket Material	Fluoropolymer, Red
Jacket Diameter	0.37 in [9.4 mm]
Repeated Minimum Bend Radius	4 in [101.6 mm]

Plenum N Male to N Male Low Loss Cable Using LMR-400-LLPX Coax with Times Microwave Components



PE3C10274

Connectors

Description	Connector 1	Connector 2
Type	N Male	N Male
Impedance	50 Ohms	50 Ohms
Configuration	Straight	Straight
Contact Material and Plating	Beryllium Bronze, Gold	Beryllium Bronze, Gold
Contact Plating Specification	50 µin minimum	50 µin minimum
Dielectric Type	PTFE	PTFE
Body Material and Plating	Brass, Tri-Metal	Brass, Tri-Metal
Body Plating Specification	100 µin minimum	100 µin minimum
Coupling Nut Material and Plating	Brass, Tri-Metal	Brass, Tri-Metal
Coupling Nut Plating Specification	100 µin minimum	100 µin minimum
Hex Size	20.57 mm	20.57 mm
Torque	18.417 ft-lbs 24.97 Nm	18.417 ft-lbs 24.97 Nm

Environmental Specifications

Operating Range Temperature -40 to +125 deg C

Compliance Certifications (see [product page](#) for current document)

Plotted and Other Data

Notes:

Plenum N Male to N Male Low Loss Cable Using LMR-400-LLPX Coax with Times Microwave Components



PE3C10274

Typical Performance Data

How to Order

Part Number Configuration:

PE3C10274

- **xx**

uu

Unit of Measure:

cm = Centimeters

<blank> = Inches

Length

Base Number

Example: PE3C10274-12 = 12 inches long cable
PE3C10274-100cm = 100 cm long cable

Plenum N Male to N Male Low Loss Cable Using LMR-400-LLPX Coax with Times Microwave Components from Pasternack Enterprises has same day shipment for domestic and International orders. Our RF, microwave and millimeter wave products maintain a 99.4% availability and are part of the broadest selection in the industry.

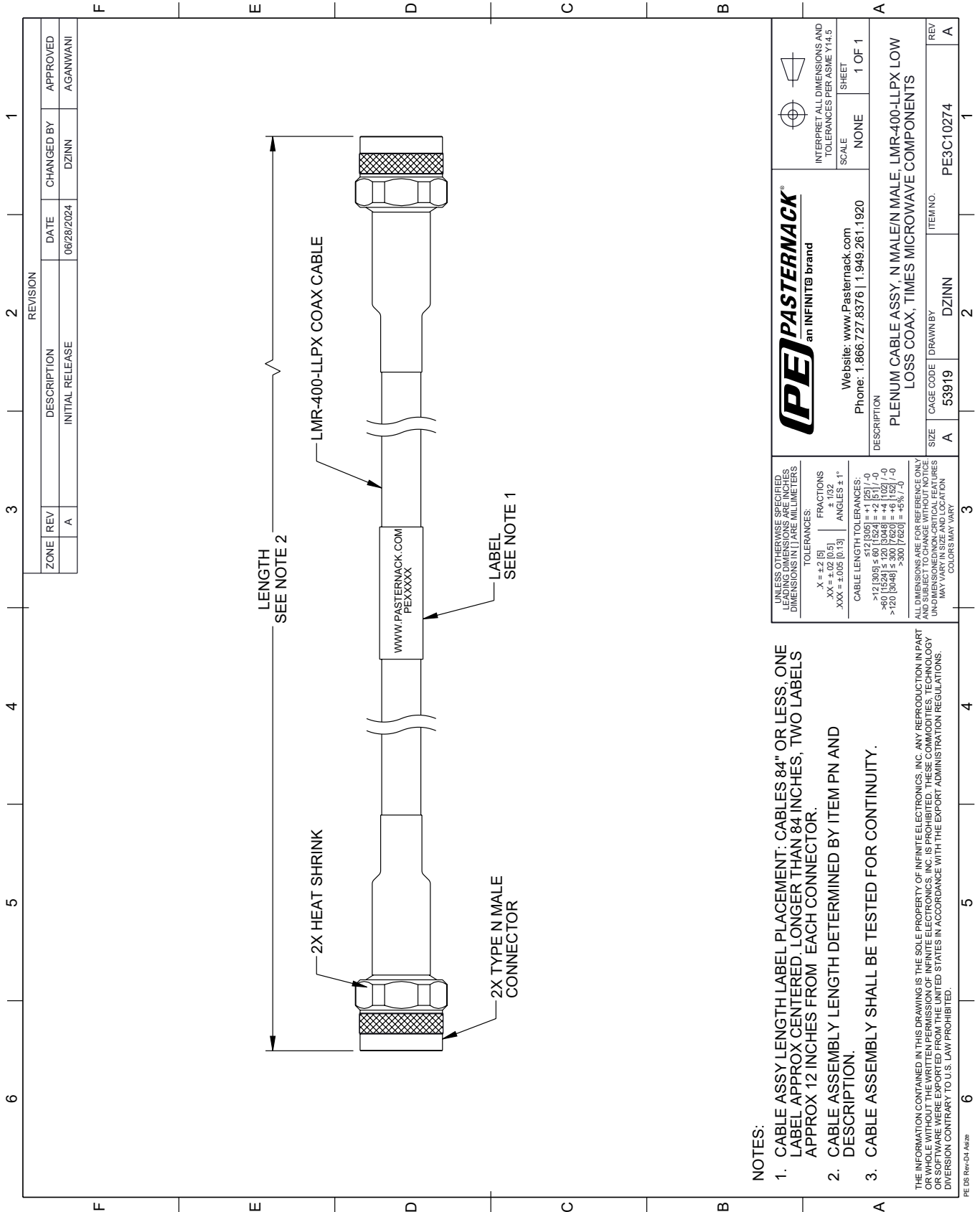
Click the following link (or enter part number in "SEARCH" on website) to obtain additional part information including price, inventory and certifications: [Plenum N Male to N Male Low Loss Cable Using LMR-400-LLPX Coax with Times Microwave Components PE3C10274](#)

URL: <https://www.pasternack.com/plenum-n-male-to-n-male-low-loss-cable-using-lmr-400-llpx-pe3c10274-p.aspx>

The information contained within this document is accurate to the best of our knowledge and representative of the part described herein. It may be necessary to make modifications to the part and/or the documentation of the part in order to implement improvements. Pasternack Enterprises reserves the right to make such changes as required. Unless otherwise stated, all specifications are nominal. Pasternack Enterprises does not make any representation or warranty regarding the suitability of the part described herein for any particular purpose, and Pasternack Enterprises does not assume liability arising out of the use of any part or document.

PE3C10274 CAD Drawing

Plenum N Male to N Male Low Loss Cable Using LMR-400-LLPX Coax with Times Microwave Components



NOTES:

1. CABLE ASSY LENGTH LABEL PLACEMENT: CABLES 84" OR LESS, ONE LABEL APPROX CENTERED, LONGER THAN 84 INCHES, TWO LABELS APPROX 12 INCHES FROM EACH CONNECTOR.
2. CABLE ASSEMBLY LENGTH DETERMINED BY ITEM PN AND DESCRIPTION.
3. CABLE ASSEMBLY SHALL BE TESTED FOR CONTINUITY.

THE INFORMATION CONTAINED IN THIS DRAWING IS THE SOLE PROPERTY OF INFINITE ELECTRONICS, INC. ANY REPRODUCTION IN PART OR WHOLE WITHOUT THE WRITTEN PERMISSION OF INFINITE ELECTRONICS, INC. IS PROHIBITED. THESE COMMODITIES, TECHNOLOGY OR SOFTWARE WERE EXPORTED FROM THE UNITED STATES IN ACCORDANCE WITH THE EXPORT ADMINISTRATION REGULATIONS. DIVERSION CONTRARY TO U.S. LAW PROHIBITED.

PE DS Rev-04 Add2

REVISION		DATE	CHANGED BY	APPROVED	
ZONE	REV	DESCRIPTION	DATE	CHANGED BY	APPROVED
	A	INITIAL RELEASE	06/28/2024	DZINN	AGANWANI

PASTERNAK an INFINITE brand		INTERPRET ALL DIMENSIONS AND TOLERANCES PER ASME Y14.5 SCALE NONE SHEET 1 OF 1
Website: www.Pasternack.com Phone: 1.866.727.8376 1.949.261.1920		
DESCRIPTION PLENUM CABLE ASSY, N MALE/N MALE, LMR-400-LLPX LOW LOSS COAX, TIMES MICROWAVE COMPONENTS		
SIZE	CAGE CODE	ITEM NO.
A	53919	PE3C10274
DRAWN BY		REV
DZINN		A

UNLESS OTHERWISE SPECIFIED, LEADING DIMENSIONS ARE IN INCHES, DIMENSIONS IN [] ARE MILLIMETERS.

TOLERANCES:
 .X = ±.2 [5]
 .XX = ±.02 [0.5]
 .XXX = ±.005 [0.13]

FRACTIONS
 ± 1/32
 ANGLES ± 1°

CABLE LENGTH TOLERANCES:
 <12 [305] ≤ 60 [1524] = ±.1 [25] / -0
 >60 [1524] ≤ 120 [3048] = ±.4 [102] / -0
 >120 [3048] ≤ 300 [7620] = ±.6 [15] / -0
 >300 [7620] = ±.6% / -0

ALL DIMENSIONS ARE FOR REFERENCE ONLY. UNLESS OTHERWISE SPECIFIED, ALL DIMENSIONS ARE NON-CRITICAL FEATURES. MAY VARY IN SIZE AND LOCATION. COLORS MAY VARY.