

## Plenum BNC Male to N Male Low Loss Cable Using LMR-240-LLPX Coax with Times Microwave Components



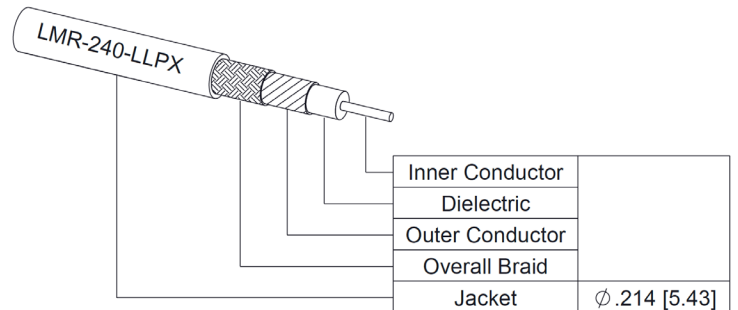
### PE3C10279

#### Configuration

- Connector 1: BNC Male
- Connector 2: N Male
- Cable Type: LMR-240-LLPX

#### Features

- Shielding Effectivity > 90 dB
- 76% Phase Velocity
- Fluoropolymer Jacket



#### Applications

- General Purpose
- Laboratory Use

#### Description

Pasternack's PE3C10279 BNC male to type N male cable using LMR-240-LLPX coax is part of our full line of RF components available for same-day shipping. This Pasternack BNC to type N cable assembly has a male to male gender configuration with 50 ohm LMR-240-LLPX coax.

Custom versions of most RF cable assemblies can be built and shipped same day. Custom cable assembly lengths can be obtained by specifying the desired length on the web site at time of order or by contacting a sales representative. Other available RF cable assembly value added services include connector orientation or clocking, heat shrink booting and custom labeling. RF testing can also be performed to document the electrical performance of your cable assembly.

#### Electrical Specifications

Description	Minimum	Typical	Maximum	Units
Velocity of Propagation		76		%
RF Shielding	90			dB
Capacitance		26.7 [87.6]		pF/ft [pF/m]
Inductance		0.067 [0.22]		uH/ft [uH/m]
DC Resistance Inner Conductor		4 [13.12]		Ohms/1000ft [Ohms/Km]
DC Resistance Outer Conductor		3.9 [12.8]		Ohms/1000ft [Ohms/Km]
Jacket Spark			5,000	Vrms

#### Mechanical Specifications

##### Cable Assembly

Width/Diameter

0.5 in [12.7 mm]

Weight

0.214 lbs [97.07 g]

## Plenum BNC Male to N Male Low Loss Cable Using LMR-240-LLPX Coax with Times Microwave Components



### PE3C10279

#### Cable

Cable Type	LMR-240-LLPX
Impedance	50 Ohms
Inner Conductor Material and Plating	Copper
Dielectric Type	PTFE
Outer Conductor 1 Material and Plating	Aluminum Tape
Jacket Material	Fluoropolymer
Jacket Diameter	0.214 in [5.44 mm]
One Time Minimum Bend Radius	0.75 in [19.05 mm]
Repeated Minimum Bend Radius	2.5 in [63.5 mm]
Flat Plate Crush	85 lbs/in [1.52 Kg/mm]
Tensile Strength	60 lbs [27.22 Kg]

#### Connectors

Description	Connector 1	Connector 2
Type	BNC Male	N Male
Specification		MIL-STD-348
Impedance	50 Ohms	50 Ohms
Configuration	Straight	Straight
Mating Cycles	500	
Contact Material and Plating	Beryllium Copper, Gold	Beryllium Copper, Gold
Contact Plating Specification	50 µin minimum	ASTM-B488
Dielectric Type	PTFE	Teflon
Body Material and Plating	Brass, Tri-Metal	Brass, Tri-Metal
Body Plating Specification	80 µin minimum	QQ-N-290
Coupling Nut Material and Plating		Brass, Tri-Metal
Coupling Nut Plating Specification		QQ-N-290
Hex Size		13/16 inch

#### Environmental Specifications

**Compliance Certifications** (see [product page](#) for current document)

#### Plotted and Other Data

Notes:

## Plenum BNC Male to N Male Low Loss Cable Using LMR-240-LLPX Coax with Times Microwave Components



### PE3C10279

#### Typical Performance Data

#### How to Order

Part Number Configuration:

**PE3C10279**

- **xx**

**uu**

Unit of Measure:

cm = Centimeters

<blank> = Inches

Length

Base Number

Example: PE3C10279-12 = 12 inches long cable  
PE3C10279-100cm = 100 cm long cable

Plenum BNC Male to N Male Low Loss Cable Using LMR-240-LLPX Coax with Times Microwave Components from Pasternack Enterprises has same day shipment for domestic and International orders. Our RF, microwave and millimeter wave products maintain a 99.4% availability and are part of the broadest selection in the industry.

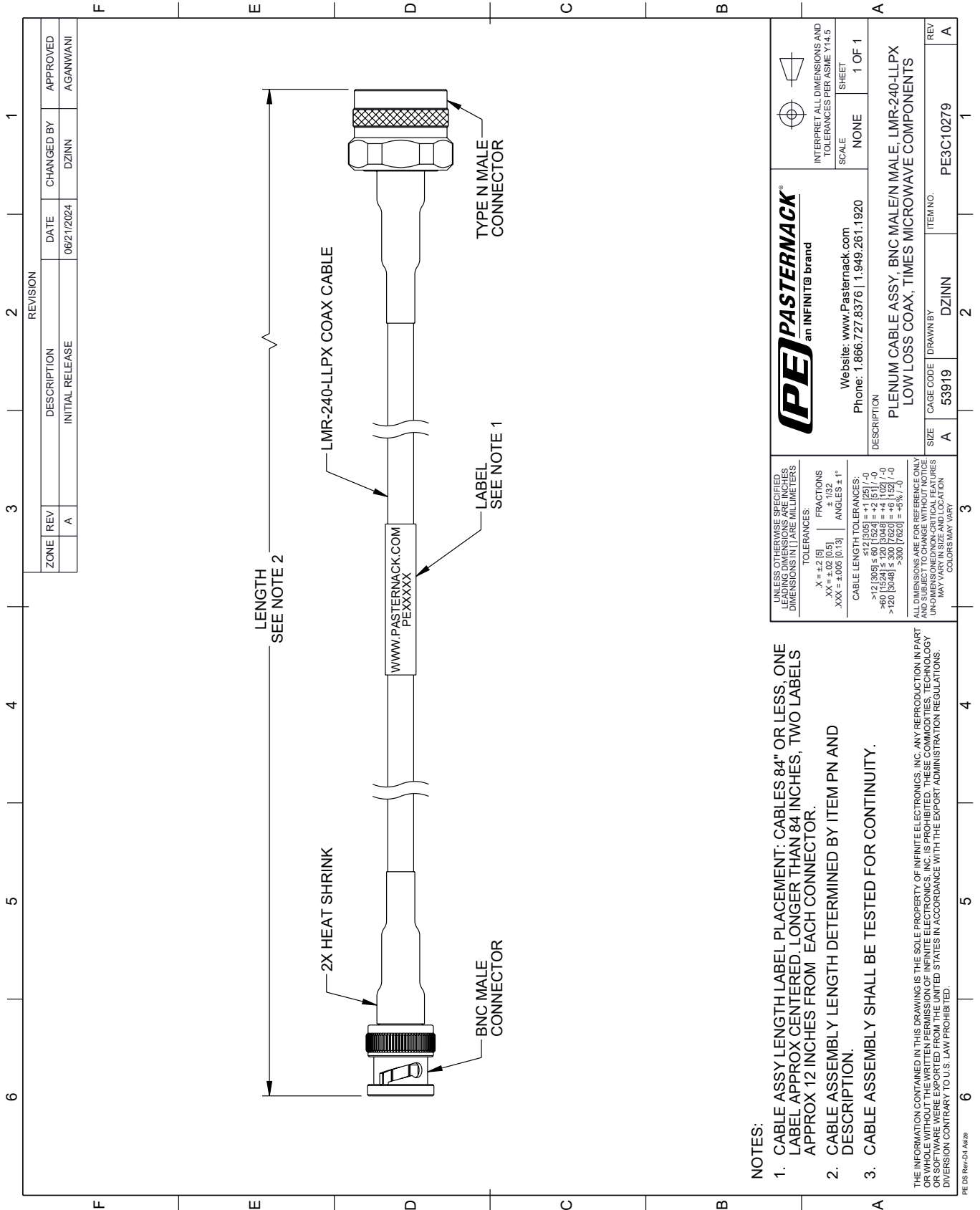
Click the following link (or enter part number in "SEARCH" on website) to obtain additional part information including price, inventory and certifications: [Plenum BNC Male to N Male Low Loss Cable Using LMR-240-LLPX Coax with Times Microwave Components PE3C10279](#)

URL: <https://www.pasternack.com/plenum-bnc-male-to-n-male-low-loss-cable-using-lmr-240-llpx-pe3c10279-p.aspx>

The information contained within this document is accurate to the best of our knowledge and representative of the part described herein. It may be necessary to make modifications to the part and/or the documentation of the part in order to implement improvements. Pasternack Enterprises reserves the right to make such changes as required. Unless otherwise stated, all specifications are nominal. Pasternack Enterprises does not make any representation or warranty regarding the suitability of the part described herein for any particular purpose, and Pasternack Enterprises does not assume liability arising out of the use of any part or document.

# PE3C10279 CAD Drawing

Plenum BNC Male to N Male Low Loss Cable Using LMR-240-LLPX Coax with Times Microwave Components



**NOTES:**

- CABLE ASSY LENGTH LABEL PLACEMENT: CABLES 84" OR LESS, ONE LABEL APPROX CENTERED, LONGER THAN 84 INCHES, TWO LABELS APPROX 12 INCHES FROM EACH CONNECTOR.
- CABLE ASSEMBLY LENGTH DETERMINED BY ITEM PN AND DESCRIPTION.
- CABLE ASSEMBLY SHALL BE TESTED FOR CONTINUITY.

THE INFORMATION CONTAINED IN THIS DRAWING IS THE SOLE PROPERTY OF INFINITE ELECTRONICS, INC. ANY REPRODUCTION IN PART OR WHOLE WITHOUT THE WRITTEN PERMISSION OF INFINITE ELECTRONICS, INC. IS PROHIBITED. THESE COMMODITIES, TECHNOLOGY OR SOFTWARE WERE EXPORTED FROM THE UNITED STATES IN ACCORDANCE WITH THE EXPORT ADMINISTRATION REGULATIONS. DIVERSION CONTRARY TO U.S. LAW PROHIBITED.

PE DS Rev-04 Add2

<p><b>PASTERNAK</b> an INFINITE brand</p>		<p>INTERPRET ALL DIMENSIONS AND TOLERANCES PER ASME Y14.5</p>
<p>Website: <a href="http://www.Pasternack.com">www.Pasternack.com</a> Phone: 1.866.727.8376   1.949.261.1920</p>		<p>SCALE: NONE SHEET: 1 OF 1</p>
<p>DESCRIPTION: PLENUM CABLE ASSY, BNC MALE/N MALE, LMR-240-LLPX LOW LOSS COAX, TIMES MICROWAVE COMPONENTS</p>		
<p>SIZE: A</p>	<p>CAGE CODE: 53919</p>	<p>ITEM NO.: PE3C10279</p>

UNLESS OTHERWISE SPECIFIED, LEADING DIMENSIONS ARE IN INCHES, DIMENSIONS IN [ ] ARE MILLIMETERS.

TOLERANCES:  
 .X = ±.2 [5]  
 .XX = ±.02 [0.5]  
 .XXX = ±.005 [0.13]

FRACTIONS: ± 1/32  
 ANGLES: ± 1°

CABLE LENGTH TOLERANCES:  
 <12 [305] ≤ 60 [1524] = ±1 [25] / -0  
 >60 [1524] ≤ 120 [3048] = ±4 [102] / -0  
 >120 [3048] ≤ 300 [7620] = ±5% / -0

ALL DIMENSIONS ARE FOR REFERENCE ONLY. UNDIMENSIONED NON-CRITICAL FEATURES MAY VARY IN SIZE AND LOCATION. COLORS MAY VARY.