

## N Male to N Male Cable Using RG214 Coax, LF Solder



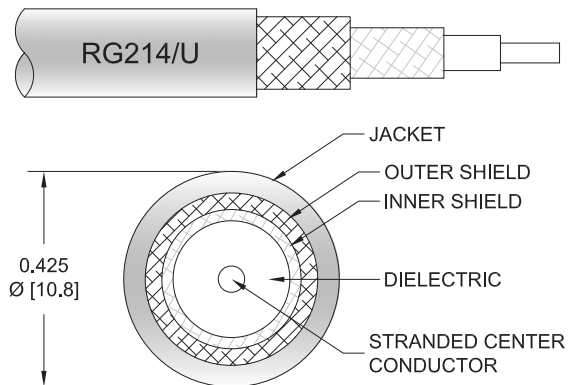
### PE3C1689LF

#### Configuration

- Connector 1: N Male
- Connector 2: N Male
- Cable Type: RG214
- Coax Flex Type: Flexible

#### Features

- Max Frequency 2 GHz
- 66% Phase Velocity
- Double Shielded
- PVC Jacket



#### Applications

- General Purpose
- Laboratory Use

#### Description

Pasternack's PE3C1689LF type N male to type N male cable using RG214 coax is part of our full line of RF components available for same-day shipping. Pasternack's flexible RF cable assemblies are ideal for applications where tight bends and flexure are required. This Pasternack type N to type N cable assembly has a male to male gender configuration with 50 ohm flexible RG214 coax. The PE3C1689LF type N male to type N male cable assembly operates to 2 GHz. The double shielding of this Pasternack cable assembly provides excellent shielding effectiveness.

Custom versions of most RF cable assemblies can be built and shipped same day. Custom cable assembly lengths can be obtained by specifying the desired length on the web site at time of order or by contacting a sales representative. Other available RF cable assembly value added services include connector orientation or clocking, heat shrink booting and custom labeling. RF testing can also be performed to document the electrical performance of your cable assembly.

#### Electrical Specifications

Description	Minimum	Typical	Maximum	Units
Frequency Range	DC		2	GHz
VSWR			1.4:1	
Velocity of Propagation		66		%
Capacitance		30.8 [101.05]		pF/ft [pF/m]
Operating Voltage (AC)			1,000	V <sub>rms</sub>

#### Specifications by Frequency

## N Male to N Male Cable Using RG214 Coax, LF Solder



### PE3C1689LF

Part Number	Length	Description	F1	F2	F3	F4	F5	Units	Weight (lbs)
			Frequency		50	100	250	500	
PE3C1689LF	Custom Lengths Available	Insertion Loss (Typ.)	0.013	0.021	0.03	0.046	0.109	dB/ft	
			0.05	0.07	0.1	0.16	0.36	dB/m	
PE3C1689LF-12	12 inch	Insertion Loss (Typ.)	0.22	0.23	0.23	0.25	0.31	dB	0.36
PE3C1689LF-36	36 inch	Insertion Loss (Typ.)	0.24	0.27	0.29	0.34	0.53	dB	0.617
PE3C1689LF-48	48 inch	Insertion Loss (Typ.)	0.26	0.29	0.32	0.39	0.64	dB	0.745
PE3C1689LF-72	72 inch	Insertion Loss (Typ.)	0.28	0.33	0.38	0.48	0.86	dB	1.001
PE3C1689LF-108	108 inch	Insertion Loss (Typ.)	0.32	0.39	0.47	0.62	1.19	dB	1.385

The insertion loss data for the base model does not include loss due to the connectors. Each length includes insertion loss due to the connectors.

Loss due to Connector 1:	0.1 dB
Loss due to Connector 2:	0.1 dB
Base Weight:	0.36 pounds
Additional Weight per Inch:	0.01067 pounds

### Mechanical Specifications

#### Cable Assembly

Weight 0.36 lbs [163.29 g]

#### Cable

Cable Type	RG214
Impedance	50 Ohms
Inner Conductor Type	Stranded
Inner Conductor Material and Plating	Copper, Silver
Dielectric Type	PE
Number of Shields	2
Shield Layer 1	Silver Plated Copper Braid
Shield Layer 2	Silver Plated Copper Braid
Jacket Material	PVC, Black
Jacket Diameter	0.425 in [10.8 mm]
Repeated Minimum Bend Radius	1.6 in [40.64 mm]

## N Male to N Male Cable Using RG214 Coax, LF Solder



### PE3C1689LF

#### Connectors

Description	Connector 1	Connector 2
Type	N Male	N Male
Impedance	50 Ohms	50 Ohms
Configuration	Straight	Straight
Contact Material and Plating	Brass, Gold	Brass, Gold
Contact Plating Specification	30 µin minimum	30 µin minimum
Dielectric Type	PTFE	PTFE
Body Material and Plating	Brass, Nickel	Brass, Nickel
Body Plating Specification	100 µin minimum	100 µin minimum
Coupling Nut Material and Plating	Brass, Nickel	Brass, Nickel
Coupling Nut Plating Specification	100 µin minimum	100 µin minimum

#### Environmental Specifications

Operating Range Temperature -20 to +80 deg C

**Compliance Certifications** (see [product page](#) for current document)

#### Plotted and Other Data

Notes:

## N Male to N Male Cable Using RG214 Coax, LF Solder



### PE3C1689LF

#### Typical Performance Data

#### How to Order

Part Number Configuration:

**PE3C1689LF - xx uu**

PE3C1689LF: Base Number  
 - xx: Length  
 uu: Unit of Measure:  
 cm = Centimeters  
 <blank> = Inches

Example: PE3C1689LF-12 = 12 inches long cable  
 PE3C1689LF-100cm = 100 cm long cable

N Male to N Male Cable Using RG214 Coax, LF Solder from Pasternack Enterprises has same day shipment for domestic and International orders. Our RF, microwave and millimeter wave products maintain a 99.4% availability and are part of the broadest selection in the industry.

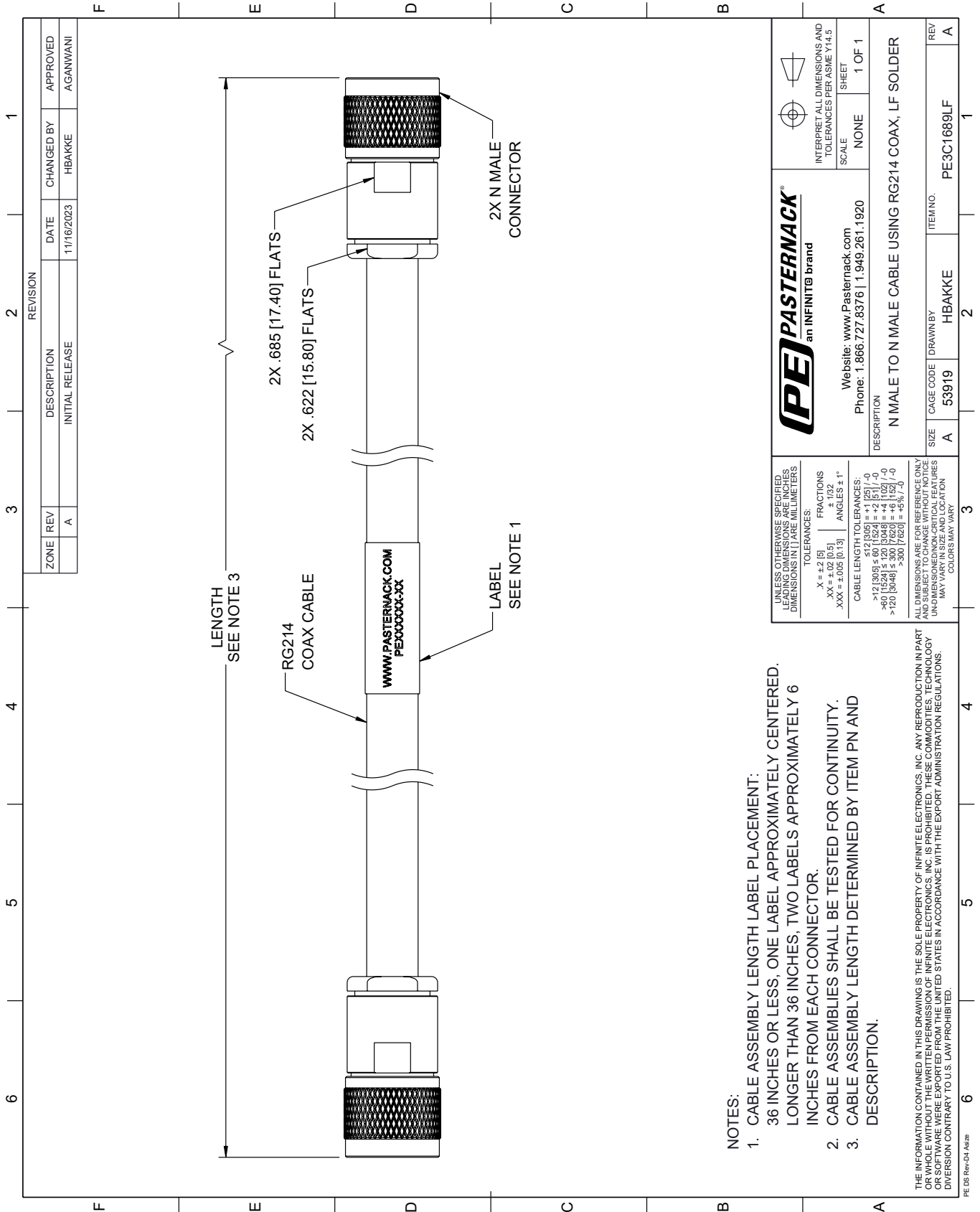
Click the following link (or enter part number in "SEARCH" on website) to obtain additional part information including price, inventory and certifications: [N Male to N Male Cable Using RG214 Coax, LF Solder PE3C1689LF](#)

URL: <https://www.pasternack.com/n-male-to-n-male-cable-using-rg214-lf-solder-pe3c1689lf-p.aspx>

The information contained within this document is accurate to the best of our knowledge and representative of the part described herein. It may be necessary to make modifications to the part and/or the documentation of the part in order to implement improvements. Pasternack Enterprises reserves the right to make such changes as required. Unless otherwise stated, all specifications are nominal. Pasternack Enterprises does not make any representation or warranty regarding the suitability of the part described herein for any particular purpose, and Pasternack Enterprises does not assume liability arising out of the use of any part or document.

# PE3C1689LF CAD Drawing

N Male to N Male Cable Using RG214 Coax, LF Solder



**NOTES:**

1. CABLE ASSEMBLY LENGTH LABEL PLACEMENT:  
36 INCHES OR LESS, ONE LABEL APPROXIMATELY CENTERED, LONGER THAN 36 INCHES, TWO LABELS APPROXIMATELY 6 INCHES FROM EACH CONNECTOR.
2. CABLE ASSEMBLIES SHALL BE TESTED FOR CONTINUITY.
3. CABLE ASSEMBLY LENGTH DETERMINED BY ITEM PN AND DESCRIPTION.

THE INFORMATION CONTAINED IN THIS DRAWING IS THE SOLE PROPERTY OF INFINITE ELECTRONICS, INC. ANY REPRODUCTION IN PART OR WHOLE WITHOUT THE WRITTEN PERMISSION OF INFINITE ELECTRONICS, INC. IS PROHIBITED. THESE COMMODITIES, TECHNOLOGY OR SOFTWARE WERE EXPORTED FROM THE UNITED STATES IN ACCORDANCE WITH THE EXPORT ADMINISTRATION REGULATIONS. DIVERSION CONTRARY TO U.S. LAW PROHIBITED.

PE DS Rev-04 Add2

<p><b>PASTERNAK</b> an INFINITE brand</p>		<p>Website: <a href="http://www.Pasternack.com">www.Pasternack.com</a> Phone: 1.866.727.8376   1.949.261.1920</p>	
<p>UNLESS OTHERWISE SPECIFIED, LEADING DIMENSIONS ARE IN INCHES. DIMENSIONS IN [ ] ARE MILLIMETERS.</p> <p>TOLERANCES:                  .X = ±.2 [5]                  .XX = ±.02 [0.5]                  .XXX = ±.005 [0.13]</p> <p>FRACTIONS                  ± 1/32</p> <p>ANGLES ± 1°</p> <p>CABLE LENGTH TOLERANCES:                  &gt;12 [305] ≤ 60 [1524] = ±1 [25] / -0                  &gt;60 [1524] ≤ 120 [3048] = ±4 [102] / -0                  &gt;120 [3048] ≤ 300 [7620] = ±5% / -0</p> <p>ALL DIMENSIONS ARE FOR REFERENCE ONLY. UNDIMENSIONED NON-CRITICAL FEATURES MAY VARY IN SIZE AND LOCATION. COLORS MAY VARY.</p>		<p>INTERPRET ALL DIMENSIONS AND TOLERANCES PER ASME Y14.5</p> <p>SCALE: NONE SHEET: 1 OF 1</p>	
<p>DESCRIPTION N MALE TO N MALE CABLE USING RG214 COAX, LF SOLDER</p>		<p>SIZE A</p>	<p>ITEM NO. PE3C1689LF</p>
<p>ZONE A</p>	<p>REV A</p>	<p>DATE 11/16/2023</p>	<p>CHANGED BY HBAKKE</p>
<p>DESCRIPTION INITIAL RELEASE</p>		<p>APPROVED AGANWANI</p>	