



N Male Right Angle to N Male Low PIM Cable Using 1/2 inch Superflexible Coax

TECHNICAL DATA SHEET

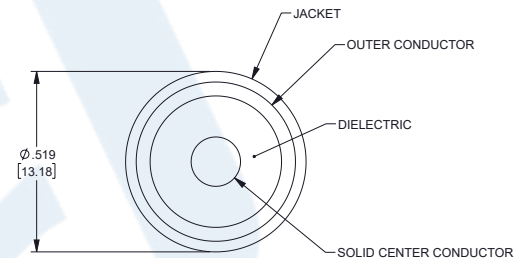
PE3C2288

Configuration

- Connector 1: N Male Right Angle
- Connector 2: N Male
- Cable Type: 1/2" Superflexible
- Coax Flex Type: Corrugated

Features

- Max Frequency 3 GHz
- Shielding Effectivity > 120 dB
- 82% Phase Velocity
- PE Jacket



Applications

- General Purpose
- Laboratory Use
- Low PIM Applications

Description

Pasternack's PE3C2288 type N male right angle to type N male cable using 1/2 inch superflexible coax is part of our full line of RF components available for same-day shipping. Pasternack's corrugated RF cable assemblies are ideal for applications where durability and high power are needed. This Pasternack type N to type N cable assembly has a male to male gender configuration with 50 ohm corrugated 1/2" superflexible coax. The PE3C2288 type N male to type N male cable assembly operates to 3 GHz. Our low PIM design also offers excellent passive intermodulation performance. The right angle type N interface on the 1/2" superflexible cable allows for easier connections in tight spaces.

Custom versions of most RF cable assemblies can be built and shipped same day. Custom cable assembly lengths can be obtained by specifying the desired length on the web site at time of order or by contacting a sales representative. Other available RF cable assembly value added services include connector orientation or clocking, heat shrink booting and custom labeling. RF testing can also be performed to document the electrical performance of your cable assembly.

Click the following link (or enter part number in "SEARCH" on website) to obtain additional part information including price, inventory and certifications: [N Male Right Angle to N Male Low PIM Cable Using 1/2 inch Superflexible Coax PE3C2288](#)



N Male Right Angle to N Male Low PIM Cable Using 1/2 inch Superflexible Coax

TECHNICAL DATA SHEET

PE3C2288

Electrical Specifications

Description	Minimum	Typical	Maximum	Units
Frequency Range	DC		3	GHz
VSWR			1.1:1	
Velocity of Propagation		82		%
RF Shielding	120			dB
Capacitance		25.3 [83.01]		pF/ft [pF/m]
Inductance		0.059 [0.19]		uH/ft [uH/m]
DC Resistance Inner Conductor		0.91 [2.99]		Ω /1000ft [Ω /Km]
DC Resistance Outer Conductor		1.08 [3.54]		Ω /1000ft [Ω /Km]

Specifications by Frequency

Part Number	Length	Description	F1	F2	F3	F4	F5	Units	Weight (lbs)
		Frequency	100	250	500	1000	3000	MHz	
PE3C2288	Custom Lengths Available	Insertion Loss (Typ.)	0.01	0.02	0.02	0.03	0.06	dB/ft	
			0.04	0.05	0.08	0.12	0.21	dB/m	
PE3C2288-24	24 inch	Insertion Loss (Typ.)	0.22	0.23	0.25	0.27	0.33	dB	0.762
PE3C2288-48	48 inch	Insertion Loss (Typ.)	0.24	0.26	0.3	0.34	0.46	dB	0.97
PE3C2288-60	60 inch	Insertion Loss (Typ.)	0.25	0.28	0.32	0.37	0.52	dB	1.074
PE3C2288-150CM	150 cm	Insertion Loss (Typ.)	0.25	0.28	0.32	0.37	0.52	dB	1.065
PE3C2288-200CM	200 cm	Insertion Loss (Typ.)	0.27	0.3	0.36	0.43	0.62	dB	1.236

The insertion loss data for the base model does not include loss due to the connectors. Each length includes insertion loss due to the connectors.

Loss due to Connector 1:	0.1 dB
Loss due to Connector 2:	0.1 dB
Base Weight:	0.657 pounds
Additional Weight per Inch:	0.00867 pounds

Mechanical Specifications

Cable Assembly

Weight 0.657 lbs [298.01 g]

Click the following link (or enter part number in "SEARCH" on website) to obtain additional part information including price, inventory and certifications: [N Male Right Angle to N Male Low PIM Cable Using 1/2 inch Superflexible Coax PE3C2288](#)



N Male Right Angle to N Male Low PIM Cable Using 1/2 inch Superflexible Coax

TECHNICAL DATA SHEET

PE3C2288

Cable

Cable Type	1/2" Superflexible
Impedance	50 Ohms
Inner Conductor Type	Solid
Inner Conductor Material and Plating	Copper Clad Aluminum
Dielectric Type	PE (F)
Number of Shields	1
Outer Conductor Material and Plating	Helically Corrugated Copper Tube
Jacket Material	PE, Black
Jacket Diameter	0.519 in [13.18 mm]
One Time Minimum Bend Radius	0.6 in [15.24 mm]
Repeated Minimum Bend Radius	1.18 in [29.97 mm]
Typical Flex Cycles	20
Tensile Strength	79 lbs [35.83 Kg]

Connectors

Description	Connector 1	Connector 2
Type	N Male Right Angle Threaded	N Male Threaded
Specification	IEC 60169-16	IEC 60169-16
Impedance	50 Ohms	50 Ohms
Contact Material and Plating	Brass, Silver	Spring Copper, Silver
Contact Plating Specification	5 µm minimum	5 µm minimum
Dielectric Type	PTFE	TPX
Outer Conductor Material and Plating		Brass, Nickel
Outer Conductor Plating Specification		5 µm minimum
Body Material and Plating	Brass, Tri-Metal	Brass, Tri-Metal
Body Plating Specification	2 µm minimum	2 µm minimum
Coupling Nut Material and Plating	Brass, Nickel	Brass, Nickel
Coupling Nut Plating Specification	5 µm minimum	5 µm minimum
Hex Size	3/4 inch	20 mm

Environmental Specifications

Temperature

Operating Range -40 to +85 deg C

Compliance Certifications (see [product page](#) for current document)

Plotted and Other Data

Notes:

Click the following link (or enter part number in "SEARCH" on website) to obtain additional part information including price, inventory and certifications: [N Male Right Angle to N Male Low PIM Cable Using 1/2 inch Superflexible Coax PE3C2288](#)



N Male Right Angle to N Male Low PIM Cable Using 1/2 inch Superflexible Coax

TECHNICAL DATA SHEET

PE3C2288

How to Order

Part Number Configuration:

PE3C2288

- **xx**

uu

Unit of Measure:
cm = Centimeters
<blank> = Inches
Length
Base Number

Example: PE3C2288-12 = 12 inches long cable
PE3C2288-100cm = 100 cm long cable

N Male Right Angle to N Male Low PIM Cable Using 1/2 inch Superflexible Coax from Pasternack Enterprises has same day shipment for domestic and International orders. Our RF, microwave and millimeter wave products maintain a 99.4% availability and are part of the broadest selection in the industry.

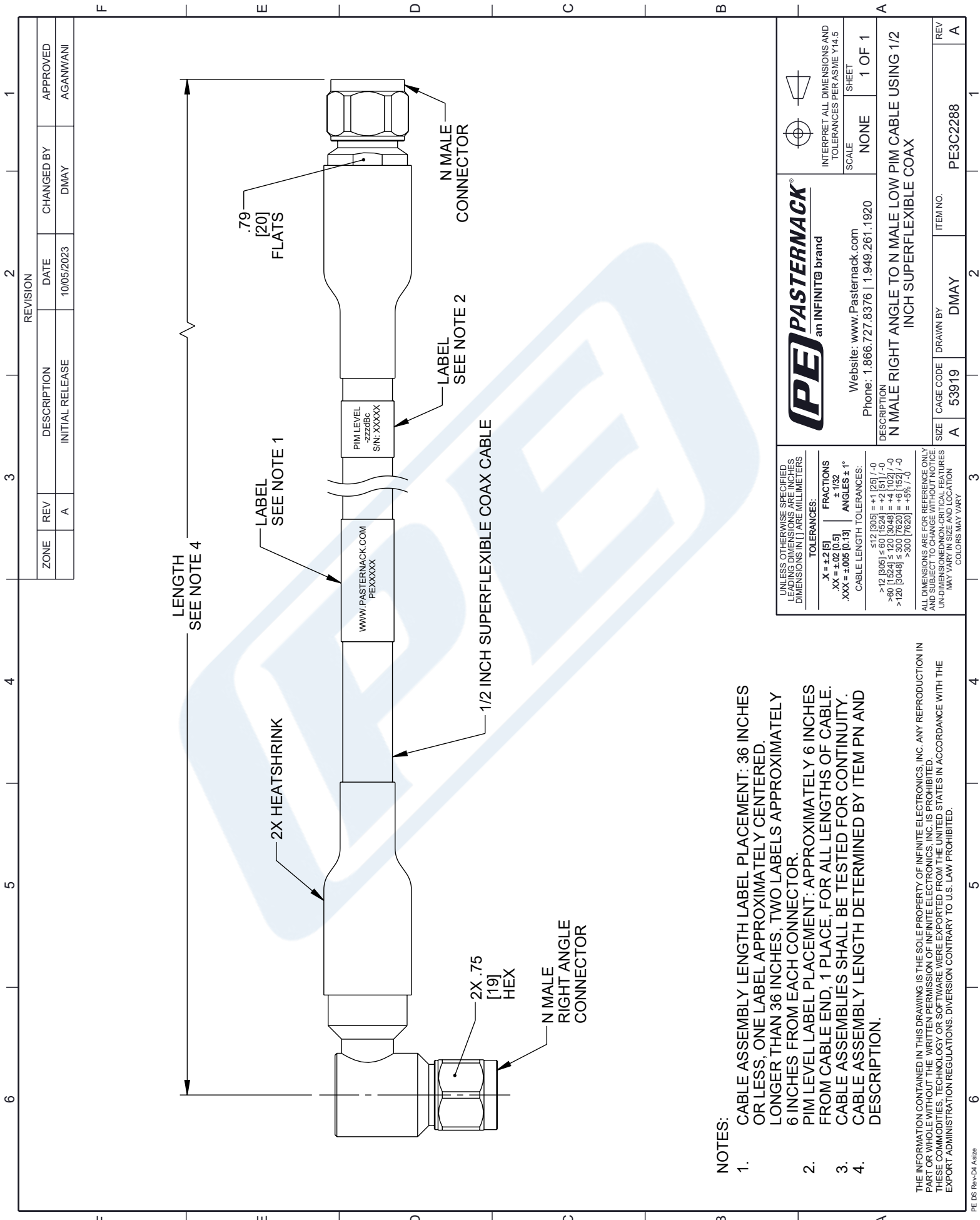
Click the following link (or enter part number in "SEARCH" on website) to obtain additional part information including price, inventory and certifications: [N Male Right Angle to N Male Low PIM Cable Using 1/2 inch Superflexible Coax PE3C2288](#)

URL: <https://www.pasternack.com/n-male-right-angle-to-n-male-low-pim-cable-using-1-2-inch-superflexible-pe3c2288-p.aspx>

The information contained in this document is accurate to the best of our knowledge and representative of the part described herein. It may be necessary to make modifications to the part and/or the documentation of the part, in order to implement improvements. Pasternack reserves the right to make such changes as required. Unless otherwise stated, all specifications are nominal. Pasternack does not make any representation or warranty regarding the suitability of the part described herein for any particular purpose, and Pasternack does not assume any liability arising out of the use of any part or documentation.

PE3C2288 CAD Drawing

N Male Right Angle to N Male Low PIM Cable Using 1/2 inch Superflexible Coax



NOTES:

1. CABLE ASSEMBLY LENGTH LABEL PLACEMENT: 36 INCHES OR LESS, ONE LABEL APPROXIMATELY CENTERED, LONGER THAN 36 INCHES, TWO LABELS APPROXIMATELY 6 INCHES FROM EACH CONNECTOR.
2. PIM LEVEL LABEL PLACEMENT: APPROXIMATELY 6 INCHES FROM CABLE END, 1 PLACE, FOR ALL LENGTHS OF CABLE.
3. CABLE ASSEMBLIES SHALL BE TESTED FOR CONTINUITY.
4. CABLE ASSEMBLY LENGTH DETERMINED BY ITEM PN AND DESCRIPTION.

THE INFORMATION CONTAINED IN THIS DRAWING IS THE SOLE PROPERTY OF INFINITE ELECTRONICS, INC. ANY REPRODUCTION IN PART OR WHOLE WITHOUT THE WRITTEN PERMISSION OF INFINITE ELECTRONICS, INC. IS PROHIBITED. THESE COMMODITIES, TECHNOLOGY OR SOFTWARE WERE EXPORTED FROM THE UNITED STATES IN ACCORDANCE WITH THE EXPORT ADMINISTRATION REGULATIONS. DIVERSION CONTRARY TO U.S. LAW PROHIBITED.

UNLESS OTHERWISE SPECIFIED LEADING DIMENSIONS ARE INCHES DIMENSIONS IN [] ARE MILLIMETERS	
TOLERANCES:	FRACTIONS
.X = ±.2 [5]	±.732
.XX = ±.02 [0.5]	ANGLES ± 1°
.XXX = ±.005 [0.13]	CABLE LENGTH TOLERANCES:
	<12 [305] = ±.1 [25] / -0
	>12 [305] ≤ 60 [1524] = ±.2 [5] / -0
	>60 [1524] ≤ 120 [3048] = +.4 [102] / -0
	>120 [3048] ≤ 300 [7620] = +.6 [152] / -0
	>300 [7620] = +5% / -0
ALL DIMENSIONS ARE FOR REFERENCE ONLY UNLESS OTHERWISE SPECIFIED UNDIMENSIONED NON-CRITICAL FEATURES MAY VARY IN SIZE AND LOCATION COLORS MAY VARY	



Website: www.Pasternack.com
Phone: 1.866.727.8376 | 1.949.261.1920

INTERPRET ALL DIMENSIONS AND TOLERANCES PER ASME Y14.5
SCALE NONE
SHEET 1 OF 1

DESCRIPTION
N MALE RIGHT ANGLE TO N MALE LOW PIM CABLE USING 1/2 INCH SUPERFLEXIBLE COAX

SIZE	CAGE CODE	DRAWN BY	ITEM NO.
A	53919	DMAY	PE3C2288