

SMP Female Right Angle to MMCX Plug Right Angle Cable Using RG196 Coax

PE3C2505

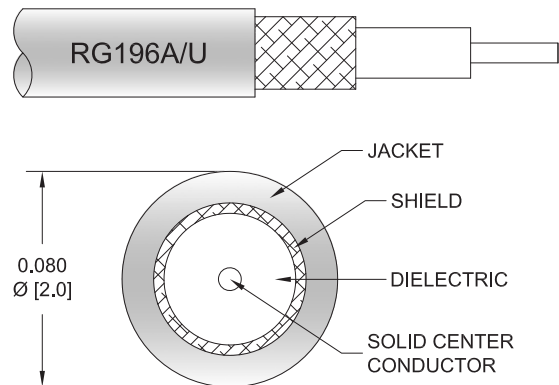


Configuration

- Connector 1: SMP Female Right Angle
- Connector 2: MMCX Plug Right Angle
- Cable Type: RG196
- Coax Flex Type: Flexible

Features

- Max Frequency 1 GHz
- PTFE Jacket



Applications

- General Purpose
- Laboratory Use

Description

Pasternack's PE3C2505 SMP female right angle to MMCX plug right angle cable using RG196 coax is part of our full line of RF components available for same-day shipping. Pasternack's flexible RF cable assemblies are ideal for applications where tight bends and flexure are required. This Pasternack SMP to MMCX cable assembly has a female to plug gender configuration with 50 ohm flexible RG196 coax. The PE3C2505 SMP female to MMCX plug cable assembly operates to 1 GHz. The right angle SMP and right angle MMCX interfaces on the RG196 cable allow for easier connections in tight spaces.

Custom versions of most RF cable assemblies can be built and shipped same day. Custom cable assembly lengths can be obtained by specifying the desired length on the web site at time of order or by contacting a sales representative. Other available RF cable assembly value added services include connector orientation or clocking, heat shrink booting and custom labeling. RF testing can also be performed to document the electrical performance of your cable assembly.

Electrical Specifications

| Description | Minimum | Typical | Maximum | Units |
|-----------------|---------|-------------|---------|--------------|
| Frequency Range | DC | | 1 | GHz |
| VSWR | | | 1.4:1 | |
| Capacitance | | 32 [104.99] | | pF/ft [pF/m] |

Specifications by Frequency

SMP Female Right Angle to MMCX Plug Right Angle Cable Using RG196 Coax



PE3C2505

| Part Number | Length | Description | F1 | F2 | F3 | F4 | F5 | Units | Weight (lbs) |
|-------------|--------------------------|-----------------------|------|------|------|------|-------|-------|--------------|
| | | Frequency | 50 | 100 | 250 | 500 | 1000 | MHz | |
| PE3C2505 | Custom Lengths Available | Insertion Loss (Typ.) | 0.04 | 0.08 | 0.21 | 0.41 | 0.825 | dB/ft | |
| | | | 0.14 | 0.27 | 0.68 | 1.36 | 2.71 | dB/m | |
| PE3C2505-12 | 12 inch | Insertion Loss (Typ.) | 0.45 | 0.49 | 0.61 | 0.82 | 1.23 | dB | 0.018 |
| PE3C2505-24 | 24 inch | Insertion Loss (Typ.) | 0.49 | 0.57 | 0.82 | 1.23 | 2.05 | dB | 0.024 |
| PE3C2505-36 | 36 inch | Insertion Loss (Typ.) | 0.53 | 0.65 | 1.02 | 1.64 | 2.88 | dB | 0.029 |
| PE3C2505-48 | 48 inch | Insertion Loss (Typ.) | 0.57 | 0.73 | 1.23 | 2.05 | 3.7 | dB | 0.034 |
| PE3C2505-72 | 72 inch | Insertion Loss (Typ.) | 0.65 | 0.9 | 1.64 | 2.88 | 5.35 | dB | 0.044 |

The insertion loss data for the base model does not include loss due to the connectors. Each length includes insertion loss due to the connectors.

| | |
|-----------------------------|----------------|
| Loss due to Connector 1: | 0.2 dB |
| Loss due to Connector 2: | 0.2 dB |
| Base Weight: | 0.018 pounds |
| Additional Weight per Inch: | 0.00042 pounds |

Mechanical Specifications

Cable Assembly

| | |
|----------------|--------------------|
| Width/Diameter | 0.5 in [12.7 mm] |
| Weight | 0.018 lbs [8.16 g] |

Cable

| | |
|--------------------------------------|---------------------------|
| Cable Type | RG196 |
| Impedance | 50 Ohms |
| Inner Conductor Type | Stranded |
| Inner Conductor Material and Plating | Copper Clad Steel, Silver |
| Dielectric Type | PTFE |
| Number of Shields | 1 |
| Shield Layer 1 | Silver Plated Copper |
| Jacket Material | PTFE, White |
| Jacket Diameter | 0.08 in [2.03 mm] |

SMP Female Right Angle to MMCX Plug Right Angle Cable Using RG196 Coax



PE3C2505

Connectors

| Description | Connector 1 | Connector 2 |
|--------------------------------------|------------------------|-----------------------|
| Type | SMP Female Right Angle | MMCX Plug Right Angle |
| Specification | MIL-STD-348A | BS EN 122340 |
| Impedance | 50 Ohms | 50 Ohms |
| Configuration | Right Angle | Right Angle |
| Contact Material and Plating | Beryllium Copper, Gold | Brass, Gold |
| Contact Plating Specification | MIL-DTL-45204 | 30μ in. minimum |
| Dielectric Type | PTFE | Teflon |
| Outer Conductor Material and Plating | Beryllium Copper, Gold | |
| Body Material and Plating | Brass, Gold | Brass, Gold |
| Body Plating Specification | MIL-DTL-45204 | 3μ in. minimum |

Environmental Specifications

Compliance Certifications (see [product page](#) for current document)

Plotted and Other Data

Notes:

SMP Female Right Angle to MMCX Plug Right Angle Cable Using RG196 Coax



PE3C2505

Typical Performance Data

How to Order

Part Number Configuration: **PE3C2505** **- xx** **uu**

Unit of Measure:
cm = Centimeters
<blank> = Inches

Length

Base Number

Example: PE3C2505-12 = 12 inches long cable
PE3C2505-100cm = 100 cm long cable

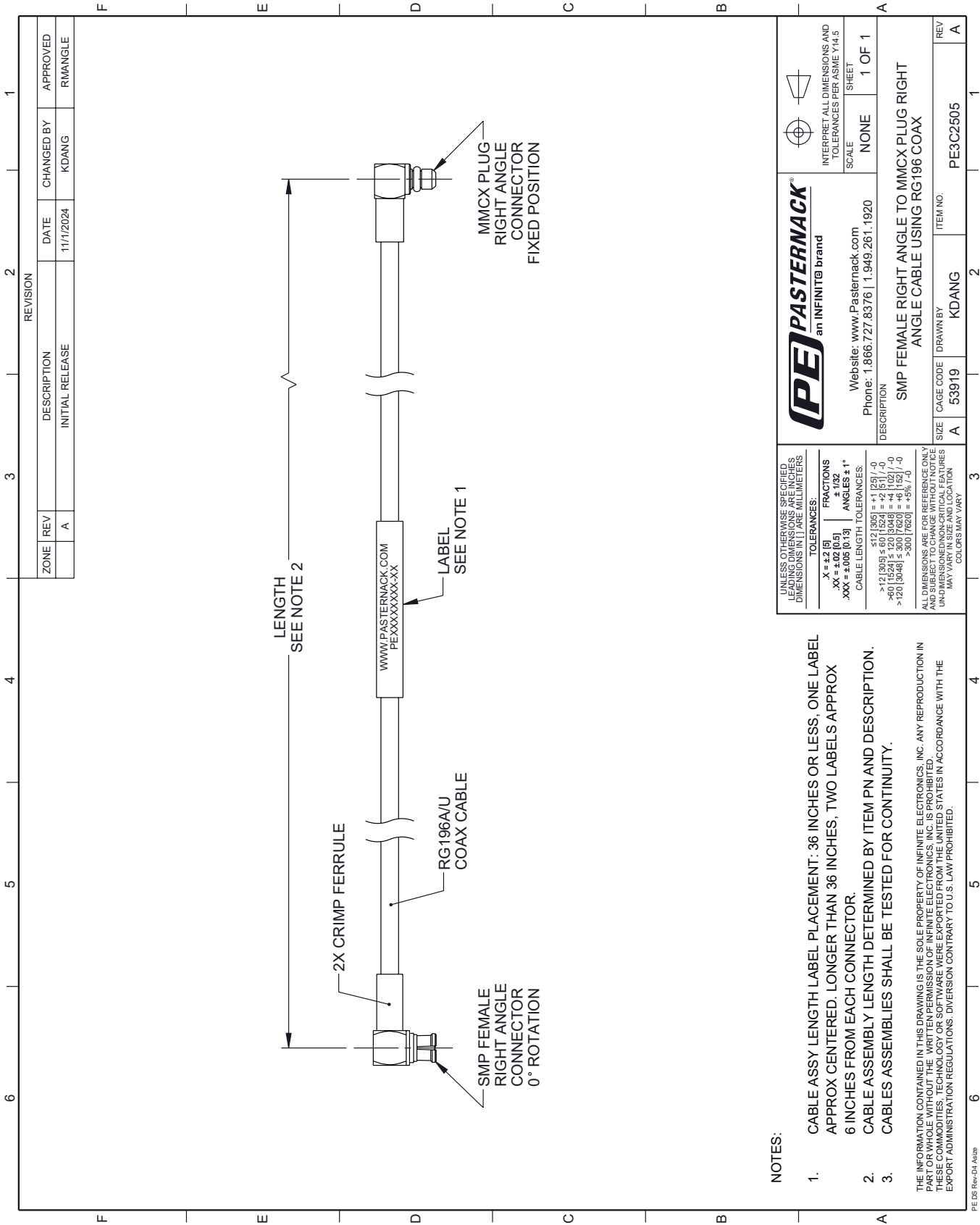
SMP Female Right Angle to MMCX Plug Right Angle Cable Using RG196 Coax from Pasternack Enterprises has same day shipment for domestic and International orders. Our RF, microwave and millimeter wave products maintain a 99.4% availability and are part of the broadest selection in the industry.

Click the following link (or enter part number in "SEARCH" on website) to obtain additional part information including price, inventory and certifications: [SMP Female Right Angle to MMCX Plug Right Angle Cable Using RG196 Coax PE3C2505](#)

URL: <https://www.pasternack.com/smp-female-right-angle-to-mmcx-plug-cable-using-rg196-pe3c2505-p.aspx>

The information contained within this document is accurate to the best of our knowledge and representative of the part described herein. It may be necessary to make modifications to the part and/or the documentation of the part in order to implement improvements. Pasternack Enterprises reserves the right to make such changes as required. Unless otherwise stated, all specifications are nominal. Pasternack Enterprises does not make any representation or warranty regarding the suitability of the part described herein for any particular purpose, and Pasternack Enterprises does not assume liability arising out of the use of any part or document.

PE3C2505 CAD Drawing
SMP Female Right Angle to MMCX Plug Right Angle Cable Using RG196 Coax



| | | | | | |
|--|--|---|--|--|--|
| UNLESS OTHERWISE SPECIFIED, LEADING DIMENSIONS ARE IN INCHES, DIMENSIONS IN [] ARE MILLIMETERS | | PE PASTERNAK an INFINITE [®] brand | | INTERPRET ALL DIMENSIONS AND TOLERANCES PER ASME Y14.5 | |
| TOLERANCES: | | Website: www.Pasternack.com Phone: 1.866.727.8376 1.949.261.1920 | | SCALE NONE | |
| .X = ±.02 [0.5] .XX = ±.005 [0.13] .XXX = ±.001 [0.025] | | FRACTIONS ± 1/32 ANGLES ± 1° | | SHEET 1 OF 1 | |
| CABLE LENGTH TOLERANCES: | | DESCRIPTION | | SMP FEMALE RIGHT ANGLE TO MMCX PLUG RIGHT ANGLE CABLE USING RG196 COAX | |
| >12 [305] ±.001 [0.025] | | SIZE | | CAGE CODE | |
| >40 [1024] ±.001 [0.025] | | DRAWN BY | | ITEM NO. | |
| >120 [3048] ±.001 [0.025] | | REV | | A | |
| ALL DIMENSIONS ARE FOR REFERENCE ONLY. UNLESS OTHERWISE SPECIFIED, DIMENSIONS ARE IN INCHES, DIMENSIONS IN [] ARE MILLIMETERS. DIMENSIONS MAY VARY IN SIZE AND LOCATION. COLORS MAY VARY. | | CAGE CODE | | 53919 | |
| | | DRAWN BY | | KDANG | |
| | | ITEM NO. | | PE3C2505 | |

- NOTES:
- CABLE ASSY LENGTH LABEL PLACEMENT: 36 INCHES OR LESS, ONE LABEL APPROX CENTERED. LONGER THAN 36 INCHES, TWO LABELS APPROX 6 INCHES FROM EACH CONNECTOR.
 - CABLE ASSEMBLY LENGTH DETERMINED BY ITEM PN AND DESCRIPTION.
 - CABLES ASSEMBLIES SHALL BE TESTED FOR CONTINUITY.
- THE INFORMATION CONTAINED IN THIS DRAWING IS THE SOLE PROPERTY OF INFINITE ELECTRONICS, INC. ANY REPRODUCTION IN PART OR WHOLE WITHOUT THE WRITTEN PERMISSION OF INFINITE ELECTRONICS, INC. IS PROHIBITED. THESE COMMODITIES, TECHNOLOGY OR SOFTWARE WERE EXPORTED FROM THE UNITED STATES IN ACCORDANCE WITH THE EXPORT ADMINISTRATION REGULATIONS. DIVERSION CONTRARY TO U.S. LAW PROHIBITED.