

Water Blue FAKRA Jack to SMA Male Cable Using RG316-DS Coax with HeatShrink



PE3C3493/HS

Configuration

- Connector 1: FAKRA Jack
- Connector 2: SMA Male
- Cable Type: RG316-DS
- Coax Flex Type: Flexible

Features

- Max Frequency 3 GHz
- Shielding Effectivity > 85 dB
- 69.5% Phase Velocity
- Double Shielded
- FEP Jacket

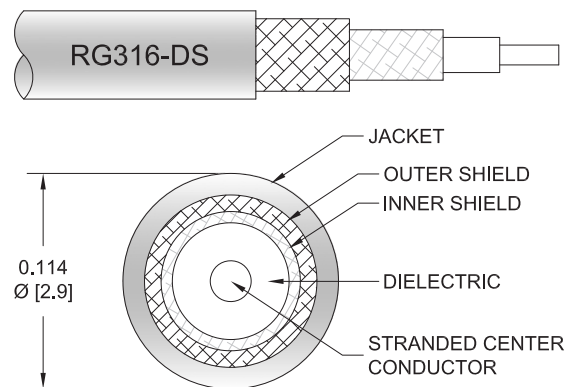
Applications

- General Purpose
- Laboratory Use

Description

Pasternack's PE3C3493/HS water blue FAKRA jack to SMA male cable using RG316-DS coax is part of our full line of RF components available for same-day shipping. Pasternack's flexible RF cable assemblies are ideal for applications where tight bends and flexure are required. This Pasternack FAKRA to SMA cable assembly has a jack to male gender configuration with 50 ohm flexible RG316-DS coax. The PE3C3493/HS FAKRA jack to SMA male cable assembly operates to 3 GHz. The double shielding of this Pasternack cable assembly provides excellent shielding effectiveness of better than 85 dB.

Custom versions of most RF cable assemblies can be built and shipped same day. Custom cable assembly lengths can be obtained by specifying the desired length on the web site at time of order or by contacting a sales representative. Other available RF cable assembly value added services include connector orientation or clocking, heat shrink booting and custom labeling. RF testing can also be performed to document the electrical performance of your cable assembly.



Electrical Specifications

Description	Minimum	Typical	Maximum	Units
Frequency Range	DC		3	GHz
VSWR			1.4:1	
Velocity of Propagation		69.5		%
RF Shielding	85			dB
Capacitance		28.96 [95.01]		pF/ft [pF/m]
DC Resistance Inner Conductor		83.82 [275]		Ohms/1000ft [Ohms/Km]
DC Resistance Outer Conductor		5.33 [17.49]		Ohms/1000ft [Ohms/Km]

Specifications by Frequency

Water Blue FAKRA Jack to SMA Male Cable
Using RG316-DS Coax with HeatShrink



PE3C3493/HS

Part Number	Length	Description	F1	F2	F3	F4	F5	Units	Weight (lbs)
			Frequency					MHz	
PE3C3493/HS	Custom Lengths Available	Insertion Loss (Typ.)	0.08	0.13	0.19	0.29	0.536	dB/ft	
			0.28	0.43	0.64	0.96	1.76	dB/m	
PE3C3493/HS-6	6 inch	Insertion Loss (Typ.)	0.25	0.27	0.3	0.35	0.47	dB	0.028
PE3C3493/HS-12	12 inch	Insertion Loss (Typ.)	0.29	0.33	0.4	0.49	0.74	dB	0.035
PE3C3493/HS-24	24 inch	Insertion Loss (Typ.)	0.37	0.46	0.59	0.78	1.28	dB	0.05
PE3C3493/HS-36	36 inch	Insertion Loss (Typ.)	0.45	0.59	0.79	1.07	1.81	dB	0.064
PE3C3493/HS-48	48 inch	Insertion Loss (Typ.)	0.54	0.72	0.98	1.36	2.35	dB	0.078

The insertion loss data for the base model does not include loss due to the connectors. Each length includes insertion loss due to the connectors.

Loss due to Connector 1: 0.1 dB
 Loss due to Connector 2: 0.1 dB
 Base Weight: 0.035 pounds
 Additional Weight per Inch: 0.00117 pounds

Mechanical Specifications

Cable Assembly

Width/Diameter 0.5 in [12.7 mm]
 Weight 0.021 lbs [9.53 g]

Cable

Cable Type RG316-DS
 Impedance 50 Ohms
 Inner Conductor Type Stranded
 Inner Conductor Material and Plating Copper Clad Steel, Silver
 Dielectric Type PTFE
 Number of Shields 2
 Shield Layer 1 Silver Plated Copper Braid
 Shield Layer 2 Silver Plated Copper Braid
 Jacket Material FEP, Tan
 Jacket Diameter 0.114 in [2.9 mm]
 One Time Minimum Bend Radius 0.59 in [14.99 mm]
 Repeated Minimum Bend Radius 1.57 in [39.88 mm]

Water Blue FAKRA Jack to SMA Male Cable
Using RG316-DS Coax with HeatShrink



PE3C3493/HS

Connectors

Description	Connector 1	Connector 2
Type	FAKRA Jack	SMA Male
Specification		MIL-STD-348A
Impedance	50 Ohms	50 Ohms
Configuration	Straight	Straight
Color	WB	
Contact Material and Plating	Phosphor Bronze, Gold	Brass, Gold
Contact Plating Specification		30 µin minimum
Dielectric Type	Teflon	PTFE
Outer Conductor Material and Plating	Brass, Nickel	
Body Material and Plating	Plastic, Paint	Brass, Nickel
Body Plating Specification		100 µin minimum
Coupling Nut Material and Plating		Brass, Nickel
Coupling Nut Plating Specification		100 µin minimum
Hex Size		5/16 inch
Torque		3 in-lbs 0.34 Nm

Environmental Specifications

Operating Range Temperature -40 to +85 deg C

Compliance Certifications (see [product page](#) for current document)

Plotted and Other Data

Notes:

Water Blue FAKRA Jack to SMA Male Cable Using RG316-DS Coax with HeatShrink



PE3C3493/HS

Typical Performance Data

How to Order

Part Number Configuration:

PE3C3493/HS - xx uu

Unit of Measure:
cm = Centimeters
<blank> = Inches

Length

Base Number

Example: PE3C3493/HS-12 = 12 inches long cable
PE3C3493/HS-100cm = 100 cm long cable

Water Blue FAKRA Jack to SMA Male Cable Using RG316-DS Coax with HeatShrink from Pasternack Enterprises has same day shipment for domestic and International orders. Our RF, microwave and millimeter wave products maintain a 99.4% availability and are part of the broadest selection in the industry.

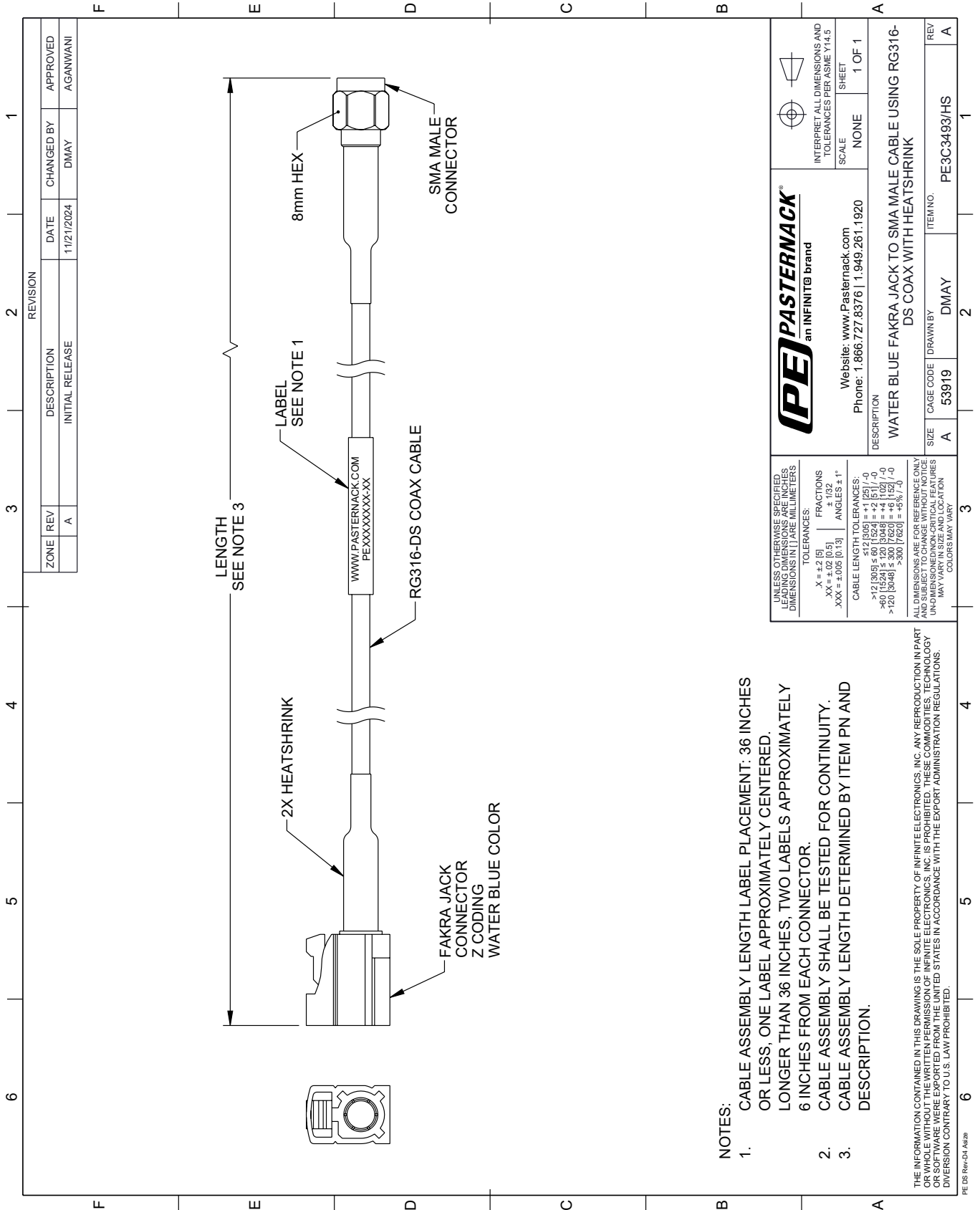
Click the following link (or enter part number in "SEARCH" on website) to obtain additional part information including price, inventory and certifications: [Water Blue FAKRA Jack to SMA Male Cable Using RG316-DS Coax with HeatShrink PE3C3493/HS](https://www.pasternack.com/fakra-jack-to-sma-male-cable-using-rg316-ds-coax-with-heatshrink-pe3c3493-hs)

URL: <https://www.pasternack.com/fakra-jack-to-sma-male-cable-using-rg316-ds-with-heatshrink-pe3c3493-hs-p.aspx>

The information contained within this document is accurate to the best of our knowledge and representative of the part described herein. It may be necessary to make modifications to the part and/or the documentation of the part in order to implement improvements. Pasternack Enterprises reserves the right to make such changes as required. Unless otherwise stated, all specifications are nominal. Pasternack Enterprises does not make any representation or warranty regarding the suitability of the part described herein for any particular purpose, and Pasternack Enterprises does not assume liability arising out of the use of any part or document.

PE3C3493/HS CAD Drawing

Water Blue FAKRA Jack to SMA Male Cable Using RG316-DS Coax with HeatShrink



NOTES:

- CABLE ASSEMBLY LENGTH LABEL PLACEMENT: 36 INCHES OR LESS, ONE LABEL APPROXIMATELY CENTERED. LONGER THAN 36 INCHES, TWO LABELS APPROXIMATELY 6 INCHES FROM EACH CONNECTOR.
- CABLE ASSEMBLY SHALL BE TESTED FOR CONTINUITY.
- CABLE ASSEMBLY LENGTH DETERMINED BY ITEM PN AND DESCRIPTION.

THE INFORMATION CONTAINED IN THIS DRAWING IS THE SOLE PROPERTY OF INFINITE ELECTRONICS, INC. ANY REPRODUCTION IN PART OR WHOLE WITHOUT THE WRITTEN PERMISSION OF INFINITE ELECTRONICS, INC. IS PROHIBITED. THESE COMMODITIES, TECHNOLOGY OR SOFTWARE WERE EXPORTED FROM THE UNITED STATES IN ACCORDANCE WITH THE EXPORT ADMINISTRATION REGULATIONS. DIVERSION CONTRARY TO U.S. LAW PROHIBITED.

PE DS Rev-D4 Add2

<p>PASTERNAK an INFINITE brand</p> <p>Website: www.Pasternack.com Phone: 1.866.727.8376 1.949.261.1920</p>	<p>INTERPRET ALL DIMENSIONS AND TOLERANCES PER ASME Y14.5</p> <p>SCALE: NONE</p> <p>SHEET: 1 OF 1</p>
	<p>DESCRIPTION: WATER BLUE FAKRA JACK TO SMA MALE CABLE USING RG316-DS COAX WITH HEATSHRINK</p> <p>SIZE: A</p> <p>CAGE CODE: 53919</p> <p>DRAWN BY: DMAY</p> <p>ITEM NO.: PE3C3493/HS</p>
<p>UNLESS OTHERWISE SPECIFIED, LEADING DIMENSIONS ARE IN INCHES, DIMENSIONS IN [] ARE MILLIMETERS.</p> <p>TOLERANCES:</p> <p>.X = +.2 (5) FRACTIONS ± 1/32</p> <p>.XX = ±.02 (0.5) ANGLES ± 1°</p> <p>.XXX = ±.005 (0.13)</p> <p>CABLE LENGTH TOLERANCES:</p> <p>>12 (305) ≤ 60 (1524) = +.1 (25) / -0</p> <p>>60 (1524) ≤ 120 (3048) = +.4 (102) / -0</p> <p>>120 (3048) ≤ 300 (7620) = +.6 (152) / -0</p> <p>>300 (7620) = +.6 (152) / -0</p> <p>ALL DIMENSIONS ARE FOR REFERENCE ONLY. UNDIMENSIONED/NON-CRITICAL FEATURES MAY VARY IN SIZE AND LOCATION. COLORS MAY VARY.</p>	<p>REV: A</p>