



SMA Male Right Angle to TNC Female Right Angle Bulkhead Low Loss Cable Using LMR-200 Coax with HeatShrink

RF Cable Assemblies Technical Data Sheet

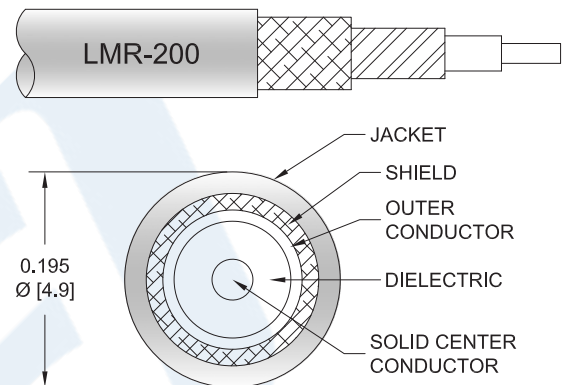
PE3C3567/HS

Configuration

- Connector 1: SMA Male Right Angle
- Connector 2: TNC Female Right Angle Bulkhead
- Cable Type: LMR-200

Features

- Max Frequency 5.8 GHz
- Shielding Effectivity > 90 dB
- 83% Phase Velocity
- Double Shielded
- PE Jacket



Applications

- General Purpose
- Laboratory Use

Description

Pasternack's PE3C3567/HS SMA male right angle to TNC female right angle bulkhead cable using LMR-200 coax is part of our full line of RF components available for same-day shipping. Pasternack's flexible RF cable assemblies are ideal for applications where tight bends and flexure are required. This Pasternack SMA to TNC cable assembly has a male to female gender configuration with 50 ohm flexible LMR-200 coax. The PE3C3567/HS SMA male to TNC female cable assembly operates to 5.8 GHz. The right angle SMA and right angle TNC interfaces on the LMR-200 cable allow for easier connections in tight spaces. Our RF cable assembly with TNC bulkhead interface allows designers to create external connections on their product enclosures, and can be used in a variety of other rack mount and panel mount applications. The double shielding of this Pasternack cable assembly provides excellent shielding effectiveness of better than 90 dB.

Custom versions of most RF cable assemblies can be built and shipped same day. Custom cable assembly lengths can be obtained by specifying the desired length on the web site at time of order or by contacting a sales representative. Other available RF cable assembly value added services include connector orientation or clocking, heat shrink booting and custom labeling. RF testing can also be performed to document the electrical performance of your cable assembly.

Click the following link (or enter part number in "SEARCH" on website) to obtain additional part information including price, inventory and certifications: [SMA Male Right Angle to TNC Female Right Angle Bulkhead Low Loss Cable Using LMR-200 Coax with HeatShrink PE3C3567/HS](#)



SMA Male Right Angle to TNC Female Right Angle Bulkhead
Low Loss Cable Using LMR-200 Coax with HeatShrink

RF Cable Assemblies Technical Data Sheet

PE3C3567/HS

Electrical Specifications

Description	Minimum	Typical	Maximum	Units
Frequency Range	DC		5.8	GHz
VSWR			1.4:1	
Velocity of Propagation		83		%
RF Shielding	90			dB
Group Delay		1.22 [4]		ns/ft [ns/m]
Capacitance		24.5 [80.38]		pF/ft [pF/m]
Inductance		0.061 [0.2]		uH/ft [uH/m]
DC Resistance Inner Conductor		5.36 [17.59]		Ω /1000ft [Ω /Km]
DC Resistance Outer Conductor		4.9 [16.08]		Ω /1000ft [Ω /Km]
Jacket Spark			3,000	Vrms

Specifications by Frequency

Description	F1	F2	F3	F4	F5	Units
Frequency	0.25	0.5	1	2.5	5.8	GHz
Insertion Loss (Typ.)	0.05	0.07	0.1	0.16	0.26	dB/ft
	0.16	0.23	0.33	0.52	0.85	dB/m

Electrical Specification Notes:

Insertion Loss does not include the loss of the connectors. Insertion Loss is estimated as 0.2 dB per connector.

Mechanical Specifications

Cable Assembly

Weight 0.113 lbs [51.26 g]

Cable

Cable Type LMR-200
 Impedance 50 Ohms
 Inner Conductor Type Solid
 Inner Conductor Material and Plating Copper
 Dielectric Type PE (F)
 Number of Shields 2
 Shield Layer 1 Aluminum Tape
 Shield Layer 2 Tinned Copper Braid
 Jacket Material PE, Black
 Jacket Diameter 0.195 in [4.95 mm]

Click the following link (or enter part number in "SEARCH" on website) to obtain additional part information including price, inventory and certifications: [SMA Male Right Angle to TNC Female Right Angle Bulkhead Low Loss Cable Using LMR-200 Coax with HeatShrink PE3C3567/HS](#)



SMA Male Right Angle to TNC Female Right Angle Bulkhead
Low Loss Cable Using LMR-200 Coax with HeatShrink

RF Cable Assemblies Technical Data Sheet

PE3C3567/HS

One Time Minimum Bend Radius	0.5 in [12.7 mm]
Repeated Minimum Bend Radius	2 in [50.8 mm]
Bending Moment	0.2 lbs-ft [0.27 N-m]
Flat Plate Crush	15 lbs/in [0.27 Kg/mm]
Tensile Strength	40 lbs [18.14 Kg]

Connectors

Description	Connector 1	Connector 2
Type	SMA Male Right Angle	TNC Female Right Angle Bulkhead
Specification	MIL-STD-348A	
Impedance	50 Ohms	50 Ohms
Mating Cycles		500
Contact Material and Plating	Brass, Gold	Brass, Gold
Contact Plating Specification	50 µin minimum	30 µin minimum
Dielectric Type	PTFE	PTFE
Outer Conductor Material and Plating		Brass, Nickel
Body Material and Plating	Brass, Nickel	Brass, Nickel
Body Plating Specification	100 µin minimum	100 µin minimum
Coupling Nut Material and Plating	Brass, Nickel	
Coupling Nut Plating Specification	100 µin minimum	
Hex Size	5/16 inch	
Torque	3 in-lbs [0.34 Nm]	

Environmental Specifications

Temperature

Operating Range -40 to +85 deg C

Compliance Certifications (see [product page](#) for current document)

Plotted and Other Data

Notes:

Click the following link (or enter part number in "SEARCH" on website) to obtain additional part information including price, inventory and certifications: [SMA Male Right Angle to TNC Female Right Angle Bulkhead Low Loss Cable Using LMR-200 Coax with HeatShrink PE3C3567/HS](#)



SMA Male Right Angle to TNC Female Right Angle Bulkhead
Low Loss Cable Using LMR-200 Coax with HeatShrink

RF Cable Assemblies Technical Data Sheet

PE3C3567/HS

How to Order

Part Number Configuration:

PE3C3567/HS - xx uu

Unit of Measure:
cm = Centimeters
<blank> = Inches
Length
Base Number

Example: PE3C3567/HS-12 = 12 inches long cable
PE3C3567/HS-100cm = 100 cm long cable

SMA Male Right Angle to TNC Female Right Angle Bulkhead Low Loss Cable Using LMR-200 Coax with HeatShrink from Pasternack Enterprises has same day shipment for domestic and International orders. Our RF, microwave and millimeter wave products maintain a 99.4% availability and are part of the broadest selection in the industry.

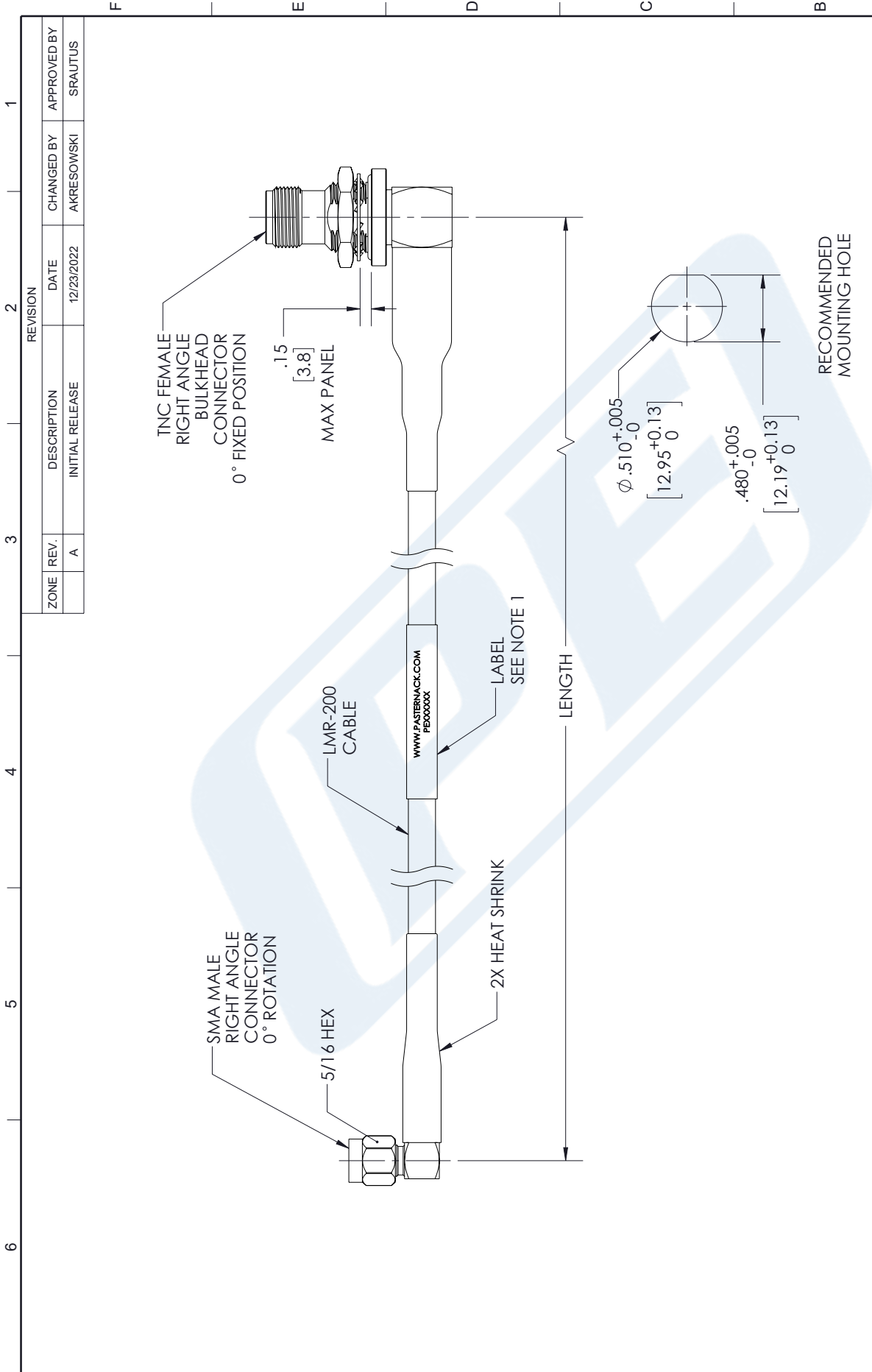
Click the following link (or enter part number in "SEARCH" on website) to obtain additional part information including price, inventory and certifications: [SMA Male Right Angle to TNC Female Right Angle Bulkhead Low Loss Cable Using LMR-200 Coax with HeatShrink PE3C3567/HS](https://www.pasternack.com/sma-male-right-angle-to-tnc-female-bulkhead-low-loss-cable-using-lmr-200-coax-with-heatshrink-pe3c3567-hs)

URL: <https://www.pasternack.com/sma-male-right-angle-to-tnc-female-bulkhead-low-loss-cable-using-lmr-200-with-heatshrink-pe3c3567-hs-p.aspx>

The information contained in this document is accurate to the best of our knowledge and representative of the part described herein. It may be necessary to make modifications to the part and/or the documentation of the part, in order to implement improvements. Pasternack reserves the right to make such changes as required. Unless otherwise stated, all specifications are nominal. Pasternack does not make any representation or warranty regarding the suitability of the part described herein for any particular purpose, and Pasternack does not assume any liability arising out of the use of any part or documentation.

PE3C3567/HS CAD Drawing

SMA Male Right Angle to TNC Female Right Angle Bulkhead Low Loss Cable Using LMR-200 Coax with HeatShrink



<p>UNLESS OTHERWISE SPECIFIED LEADING DIMENSIONS ARE INCHES DIMENSIONS IN [] ARE MILLIMETERS</p> <p>TOLERANCES:</p> <p>X = ± .2 [5] FRACTIONS ±.1/32</p> <p>.XX = ± .02 [.5] ANGLES ± 1°</p> <p>.XXX = ± .005 [.13] CABLE LENGTH TOLERANCES:</p> <p>>12 [305] ≤ 60 [1524] = ±1 [25] / -0</p> <p>>60 [1524] ≤ 120 [3048] = ±4 [102] / -0</p> <p>>120 [3048] ≤ 300 [7620] = ±6 [152] / -0</p> <p>>300 [7620] = ±5% / -0</p> <p>ALL DIMENSIONS ARE FOR REFERENCE ONLY AND SUBJECT TO CHANGE WITHOUT NOTICE</p>	<p>PE PASTERNAK an INFINITIB brand</p> <p>Website: www.Pasternack.com Phone: 1.866.727.8376 1.949.261.1920</p> <p>DESCRIPTION: SMA MALE RIGHT ANGLE TO TNC FEMALE RIGHT ANGLE BULKHEAD LOW LOSS CABLE USING LMR-200 COAX WITH HEATSHRINK</p>	<p>INTERPRET ALL DIMENSIONS AND TOLERANCES PER ASME Y14.5</p> <p>SCALE: NONE</p> <p>SHEET: 1 OF 1</p>	<p>REV. A</p> <p>DATE: 12/23/2022</p> <p>CHANGED BY: AKRESOWSKI</p> <p>APPROVED BY: SRAUTUS</p>
<p>ZONE REV. DESCRIPTION INITIAL RELEASE</p> <p>A A INITIAL RELEASE</p>		<p>REVISION</p> <p>1</p>	
<p>NOTES:</p> <p>1. CABLE ASSEMBLY LENGTH LABEL PLACEMENT: 36 INCH OR LESS, ONE LABEL APPROXIMATELY CENTERED, LONGER THAN 36 INCH, TWO LABELS APPROXIMATELY 6 INCHES FROM EACH CONNECTOR.</p> <p>2. CABLE ASSEMBLIES SHALL BE TESTED FOR CONTINUITY.</p>		<p>THE INFORMATION CONTAINED IN THIS DRAWING IS THE SOLE PROPERTY OF INFINITE ELECTRONICS, INC. ANY REPRODUCTION IN PART OR WHOLE WITHOUT THE WRITTEN PERMISSION OF INFINITE ELECTRONICS, INC. IS PROHIBITED. THESE COMMODITIES, TECHNOLOGY OR SOFTWARE WERE EXPORTED FROM THE UNITED STATES IN ACCORDANCE WITH THE EXPORT ADMINISTRATION REGULATIONS. DIVERSION CONTRARY TO U.S. LAW PROHIBITED.</p>	
<p>SIZE CAGE CODE DRAWN BY ITEM NO.</p> <p>A 53919 AKRESOWSKI PE3C3567/HS</p>		<p>REV. A</p>	