

## SMA Male to SMA Male Cable Using PE-P086 Coax



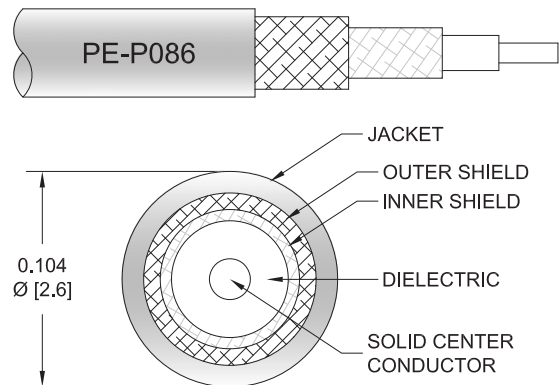
### PE3C3893

#### Configuration

- Connector 1: SMA Male
- Connector 2: SMA Male
- Cable Type: PE-P086
- Coax Flex Type: Flexible

#### Features

- Max Frequency 18 GHz
- Shielding Effectivity > 110 dB
- 70% Phase Velocity
- Double Shielded
- FEP Jacket



#### Applications

- General Purpose
- Laboratory Use

#### Description

Pasternack's PE3C3893 SMA male to SMA male cable using PE-P086 coax is part of our full line of RF components available for same-day shipping. Pasternack's flexible RF cable assemblies are ideal for applications where tight bends and flexure are required. This Pasternack SMA to SMA cable assembly has a male to male gender configuration with 50 ohm flexible PE-P086 coax. The PE3C3893 SMA male to SMA male cable assembly operates to 18 GHz. The double shielding of this Pasternack cable assembly provides excellent shielding effectiveness of better than 110 dB.

Custom versions of most RF cable assemblies can be built and shipped same day. Custom cable assembly lengths can be obtained by specifying the desired length on the web site at time of order or by contacting a sales representative. Other available RF cable assembly value added services include connector orientation or clocking, heat shrink booting and custom labeling. RF testing can also be performed to document the electrical performance of your cable assembly.

#### Electrical Specifications

Description	Minimum	Typical	Maximum	Units
Frequency Range	DC		18	GHz
VSWR			1.4:1	
Velocity of Propagation		70		%
RF Shielding	110			dB
Capacitance		29.4 [96.46]		pF/ft [pF/m]

#### Specifications by Frequency

Description	F1	F2	F3	F4	F5	Units
Frequency	1	2	4.5	9	18	GHz

## SMA Male to SMA Male Cable Using PE-P086 Coax



### PE3C3893

#### Specifications by Frequency

Description	F1	F2	F3	F4	F5	Units
Insertion Loss (Typ.)	0.211	0.305	0.47	0.695	1.046	dB/ft
	0.69	1	1.54	2.28	3.43	dB/m

#### Electrical Specification Notes:

Insertion Loss does not include the loss of the connectors. Insertion Loss is estimated as 0.3 dB x SQRT(FGHz) per connector.

#### Mechanical Specifications

##### Cable Assembly

Width/Diameter	0.5 in [12.7 mm]
Weight	0.021 lbs [9.53 g]

##### Cable

Cable Type	PE-P086
Impedance	50 Ohms
Inner Conductor Type	Solid
Inner Conductor Material and Plating	Copper Clad Steel, Silver
Dielectric Type	PTFE
Number of Shields	2
Shield Layer 1	Silver Plated Copper Tape
Shield Layer 2	Silver Plated Copper Braid
Jacket Material	FEP, Blue
Jacket Diameter	0.104 in [2.64 mm]
Repeated Minimum Bend Radius	0.5 in [12.7 mm]

#### Connectors

Description	Connector 1	Connector 2
Type	SMA Male	SMA Male
Impedance	50 Ohms	50 Ohms
Configuration	Straight	Straight
Contact Material and Plating	Brass, Gold	Brass, Gold
Dielectric Type	PTFE	PTFE
Body Material and Plating	Stainless Steel, Gold	Stainless Steel, Gold
Coupling Nut Material and Plating	Passivated Stainless Steel	Passivated Stainless Steel
Seal Gasket Material	Silicone Rubber	Silicone Rubber

#### Environmental Specifications

Operating Range Temperature	-40 to +150 deg C
-----------------------------	-------------------

## SMA Male to SMA Male Cable Using PE-P086 Coax



### PE3C3893

**Compliance Certifications** (see [product page](#) for current document)

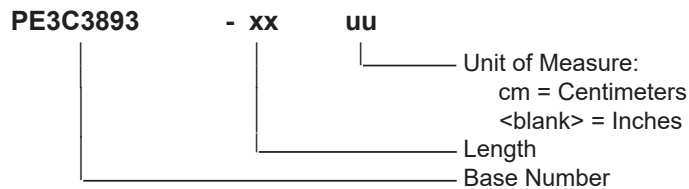
#### Plotted and Other Data

Notes:

#### Typical Performance Data

#### How to Order

Part Number Configuration:



Example: PE3C3893-12 = 12 inches long cable  
PE3C3893-100cm = 100 cm long cable

SMA Male to SMA Male Cable Using PE-P086 Coax from Pasternack Enterprises has same day shipment for domestic and International orders. Our RF, microwave and millimeter wave products maintain a 99.4% availability and are part of the broadest selection in the industry.

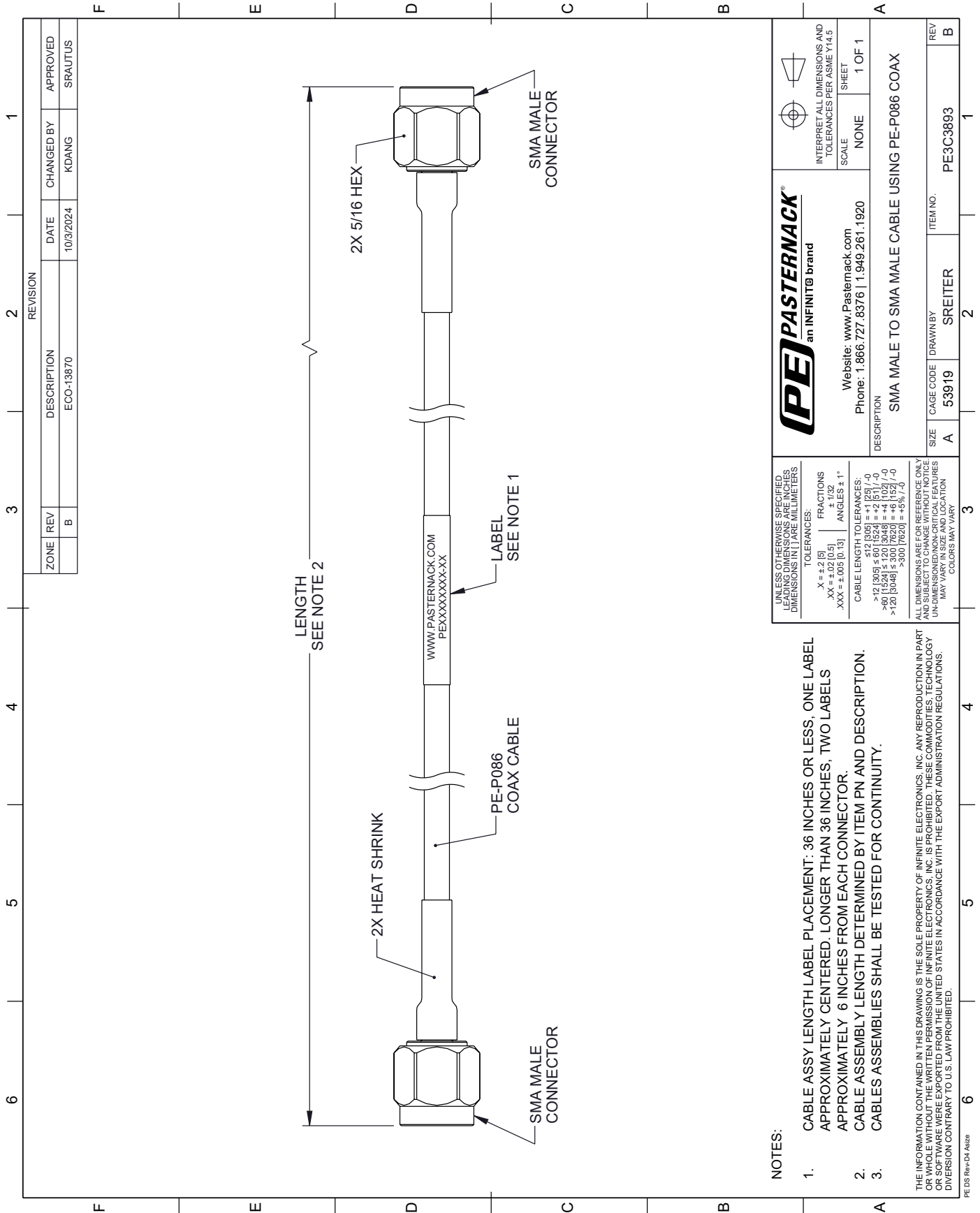
Click the following link (or enter part number in "SEARCH" on website) to obtain additional part information including price, inventory and certifications: [SMA Male to SMA Male Cable Using PE-P086 Coax PE3C3893](#)

URL: <https://www.pasternack.com/sma-male-to-sma-male-cable-using-pe-p086-pe3c3893-p.aspx>

The information contained within this document is accurate to the best of our knowledge and representative of the part described herein. It may be necessary to make modifications to the part and/or the documentation of the part in order to implement improvements. Pasternack Enterprises reserves the right to make such changes as required. Unless otherwise stated, all specifications are nominal. Pasternack Enterprises does not make any representation or warranty regarding the suitability of the part described herein for any particular purpose, and Pasternack Enterprises does not assume liability arising out of the use of any part or document.

# PE3C3893 CAD Drawing

SMA Male to SMA Male Cable Using PE-P086 Coax



<p><b>UNLESS OTHERWISE SPECIFIED LEADING DIMENSIONS ARE INCHES DIMENSIONS IN PAREMILLIMETERS</b></p> <p><b>TOLERANCES:</b></p> <p>.X = ±.2 [5]     FRACTIONS ± 1/32          .XX = ±.02 [0.5]     ANGLES ± 1°          .XXX = ±.005 [0.13]</p> <p><b>CABLE LENGTH TOLERANCES:</b></p> <p>&gt;12 [305] ≤ 60 [1524] = +2 [51] / -0          &gt;60 [1524] ≤ 120 [3048] = +4 [102] / -0          &gt;120 [3048] ≤ 300 [7620] = +5 [127] / -0          &gt;300 [7620] = +5 [127] / -0</p> <p><small>ALL DIMENSIONS ARE FOR REFERENCE ONLY. DIMENSIONS OF PARTS ARE TO BE TAKEN FROM THE DRAWING UNLESS OTHERWISE SPECIFIED. UNDIMENSIONED CRITICAL FEATURES MAY VARY IN SIZE AND LOCATION. COLORS MAY VARY.</small></p>		<p><b>PE PASTERNAK</b> an INFINITTE brand</p> <p>Website: <a href="http://www.Pasternack.com">www.Pasternack.com</a>          Phone: 1.866.727.8376   1.949.261.1920</p>		<p>INTERPRET ALL DIMENSIONS AND TOLERANCES PER ASME Y14.5</p> <p>SCALE: NONE</p> <p>SHEET: 1 OF 1</p>																			
<p>REVISION</p> <table border="1"> <tr> <th>ZONE</th> <th>REV</th> <th>DESCRIPTION</th> <th>DATE</th> <th>CHANGED BY</th> <th>APPROVED</th> </tr> <tr> <td></td> <td>B</td> <td>ECO-13870</td> <td>10/3/2024</td> <td>KDANG</td> <td>SRAUTUS</td> </tr> </table>		ZONE	REV	DESCRIPTION	DATE	CHANGED BY	APPROVED		B	ECO-13870	10/3/2024	KDANG	SRAUTUS	<p>DESCRIPTION: SMA MALE TO SMA MALE CABLE USING PE-P086 COAX</p> <table border="1"> <tr> <th>SIZE</th> <th>CAGE CODE</th> <th>DRAWN BY</th> <th>ITEM NO.</th> </tr> <tr> <td>A</td> <td>53919</td> <td>SREITER</td> <td>PE3C3893</td> </tr> </table>		SIZE	CAGE CODE	DRAWN BY	ITEM NO.	A	53919	SREITER	PE3C3893
ZONE	REV	DESCRIPTION	DATE	CHANGED BY	APPROVED																		
	B	ECO-13870	10/3/2024	KDANG	SRAUTUS																		
SIZE	CAGE CODE	DRAWN BY	ITEM NO.																				
A	53919	SREITER	PE3C3893																				
<p>NOTES:</p> <ol style="list-style-type: none"> <li>CABLE ASSY LENGTH LABEL PLACEMENT: 36 INCHES OR LESS, ONE LABEL APPROXIMATELY CENTERED. LONGER THAN 36 INCHES, TWO LABELS APPROXIMATELY 6 INCHES FROM EACH CONNECTOR.</li> <li>CABLE ASSEMBLY LENGTH DETERMINED BY ITEM PN AND DESCRIPTION.</li> <li>CABLES ASSEMBLIES SHALL BE TESTED FOR CONTINUITY.</li> </ol> <p><small>THE INFORMATION CONTAINED IN THIS DRAWING IS THE SOLE PROPERTY OF INFINITE ELECTRONICS, INC. ANY REPRODUCTION IN PART OR WHOLE WITHOUT THE WRITTEN PERMISSION OF INFINITE ELECTRONICS, INC. IS PROHIBITED. THESE COMMODITIES, TECHNOLOGY OR SOFTWARE WERE EXPORTED FROM THE UNITED STATES IN ACCORDANCE WITH THE EXPORT ADMINISTRATION REGULATIONS. DIVERSION CONTRARY TO U.S. LAW PROHIBITED.</small></p>		<p>REV B</p>																					