

Push-On SMP Female Right Angle to SMA Female Bulkhead Low Loss Cable Using LMR-100 Coax with HeatShrink



PE3C3937/HS

Configuration

- Connector 1: Push-On SMP Female Right Angle
- Connector 2: SMA Female Bulkhead
- Cable Type: LMR-100A
- Coax Flex Type: Flexible

Features

- Max Frequency 3 GHz
- Shielding Effectivity > 90 dB
- 66% Phase Velocity
- Double Shielded
- PVC Jacket



Applications

- General Purpose
- Laboratory Use

Description

Pasternack's PE3C3937/HS SMP female push-on right angle to SMA female bulkhead cable using LMR-100 coax is part of our full line of RF components available for same-day shipping. Pasternack's flexible RF cable assemblies are ideal for applications where tight bends and flexure are required. This Pasternack SMP to SMA cable assembly has a female to female gender configuration with 50 ohm flexible LMR-100A coax. The PE3C3937/HS SMP female to SMA female cable assembly operates to 3 GHz. The right angle SMP interface on the LMR-100A cable allows for easier connections in tight spaces. Our RF cable assembly with SMA bulkhead interface allows designers to create external connections on their product enclosures, and can be used in a variety of other rack mount and panel mount applications. The double shielding of this Pasternack cable assembly provides excellent shielding effectiveness of better than 90 dB.

Custom versions of most RF cable assemblies can be built and shipped same day. Custom cable assembly lengths can be obtained by specifying the desired length on the web site at time of order or by contacting a sales representative. Other available RF cable assembly value added services include connector orientation or clocking, heat shrink booting and custom labeling. RF testing can also be performed to document the electrical performance of your cable assembly.

Electrical Specifications

Description	Minimum	Typical	Maximum	Units
Frequency Range	DC		3	GHz
VSWR			1.4:1	
Velocity of Propagation		66		%
RF Shielding	90			dB
Group Delay		1.54 [5.05]		ns/ft [ns/m]
Capacitance		30.8 [101.05]		pF/ft [pF/m]
Inductance		0.077 [0.25]		uH/ft [uH/m]
DC Resistance Inner Conductor		81 [265.75]		Ohms/1000ft [Ohms/Km]
DC Resistance Outer Conductor		9.5 [31.17]		Ohms/1000ft [Ohms/Km]

Push-On SMP Female Right Angle to SMA Female Bulkhead
Low Loss Cable Using LMR-100 Coax with HeatShrink



PE3C3937/HS

Electrical Specifications

Description	Minimum	Typical	Maximum	Units
Jacket Spark			2,000	Vrms

Specifications by Frequency

Part Number	Length	Description	F1	F2	F3	F4	F5	Units	Weight (lbs)
			Frequency					MHz	
PE3C3937/HS	Custom Lengths Available	Insertion Loss (Typ.)	0.064	0.115	0.165	0.24	0.432	dB/ft	
			0.21	0.38	0.55	0.79	1.42	dB/m	
PE3C3937/HS-24	24 In	Insertion Loss (Typ.)	0.43	0.53	0.63	0.78	1.17	dB	0.038
PE3C3937/HS-36	36 In	Insertion Loss (Typ.)	0.5	0.65	0.8	1.02	1.6	dB	0.047
PE3C3937/HS-48	48 In	Insertion Loss (Typ.)	0.56	0.76	0.96	1.26	2.03	dB	0.056
PE3C3937/HS-100CM	100 CM	Insertion Loss (Typ.)	0.51	0.68	0.85	1.09	1.72	dB	0.05
PE3C3937/HS-200CM	200 CM	Insertion Loss (Typ.)	0.72	1.06	1.39	1.88	3.14	dB	0.08

The insertion loss data for the base model does not include loss due to the connectors. Each length includes insertion loss due to the connectors.

Loss due to Connector 1:	0.2 dB
Loss due to Connector 2:	0.1 dB
Base Weight:	0.029 pounds
Additional Weight per Inch:	0.00075 pounds

Mechanical Specifications

Cable Assembly

Width/Diameter	0.5 in [12.7 mm]
Weight	0.0295 lbs [13.38 g]

Cable

Cable Type	LMR-100A
Impedance	50 Ohms
Inner Conductor Type	Solid
Inner Conductor Material and Plating	Copper Clad Steel
Dielectric Type	PE
Number of Shields	2
Shield Layer 1	Aluminum Tape
Shield Layer 2	Tinned Copper Braid
Jacket Material	PVC, Black
Jacket Diameter	0.11 in [2.79 mm]
One Time Minimum Bend Radius	0.25 in [6.35 mm]
Repeated Minimum Bend Radius	1 in [25.4 mm]
Bending Moment	0.1 lbs-ft [0.14 N-m]
Flat Plate Crush	10 lbs/in [0.18 Kg/mm]
Tensile Strength	15 lbs [6.8 Kg]

Push-On SMP Female Right Angle to SMA Female Bulkhead
Low Loss Cable Using LMR-100 Coax with HeatShrink



PE3C3937/HS

Connectors

Description	Connector 1	Connector 2
Type	SMP Female Right Angle	SMA Female Bulkhead
Specification	MIL-STD-348A	
Impedance	50 Ohms	50 Ohms
Configuration	Right Angle	Straight
Connection Method	Push-On	
Contact Material and Plating	Beryllium Copper, Gold	Beryllium Copper, Gold
Contact Plating Specification	30µ in. minimum	
Dielectric Type	Teflon	PTFE
Outer Conductor Material and Plating	Beryllium Copper, Gold	Brass, Gold
Outer Conductor Plating Specification	3µ in. minimum	
Body Material and Plating	Brass, Gold	Brass, Gold
Body Plating Specification	3µ in. minimum	

Environmental Specifications

Operating Range Temperature -40 to +85 deg C

Compliance Certifications (see [product page](#) for current document)

Plotted and Other Data

Notes:

Push-On SMP Female Right Angle to SMA Female Bulkhead
Low Loss Cable Using LMR-100 Coax with HeatShrink



PE3C3937/HS

Typical Performance Data

How to Order

Part Number Configuration:

PE3C3937/HS - xx uu



Example: PE3C3937/HS-12 = 12 inches long cable
PE3C3937/HS-100cm = 100 cm long cable

Push-On SMP Female Right Angle to SMA Female Bulkhead Low Loss Cable Using LMR-100 Coax with HeatShrink from Pasternack Enterprises has same day shipment for domestic and International orders. Our RF, microwave and millimeter wave products maintain a 99.4% availability and are part of the broadest selection in the industry.

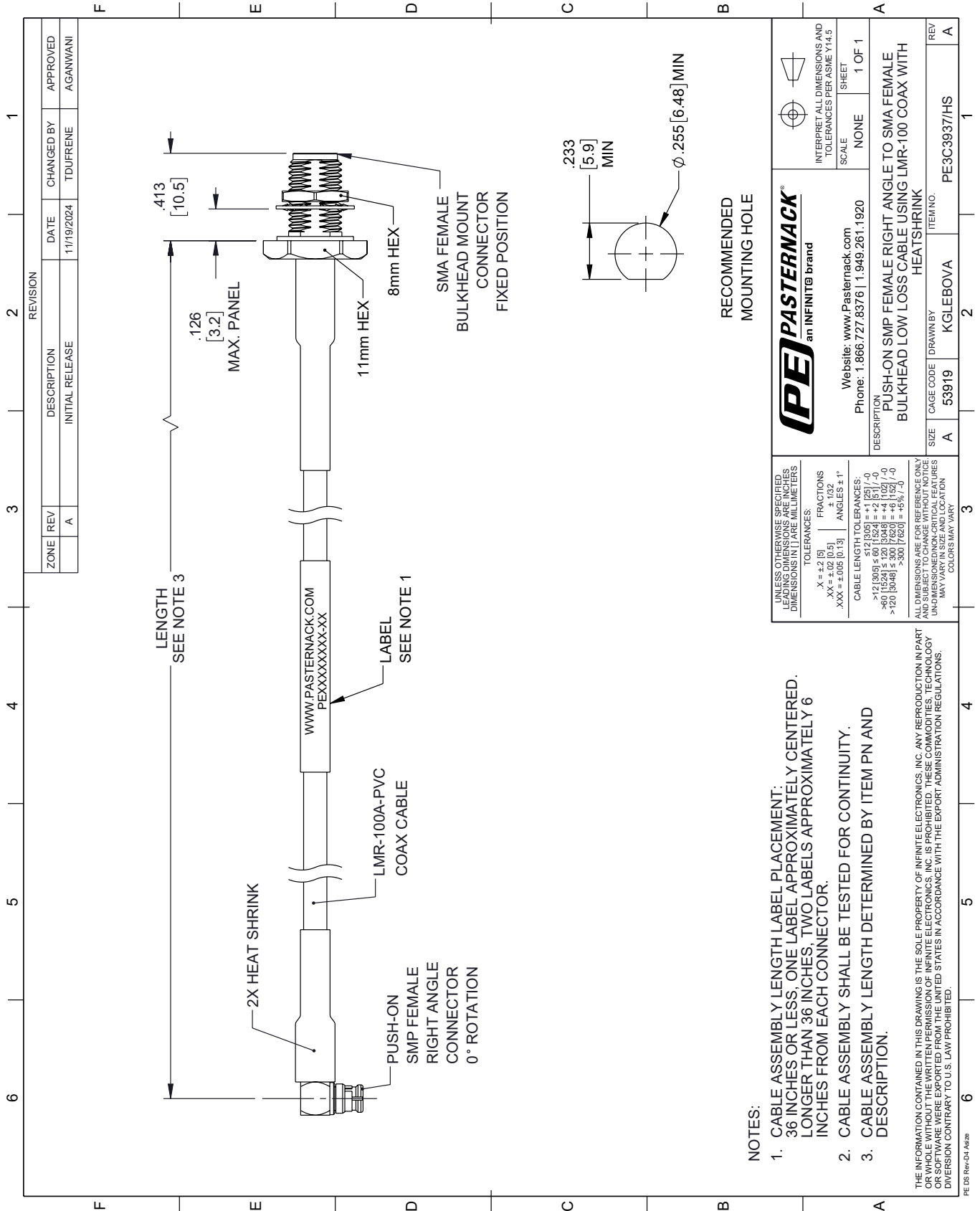
Click the following link (or enter part number in "SEARCH" on website) to obtain additional part information including price, inventory and certifications: [Push-On SMP Female Right Angle to SMA Female Bulkhead Low Loss Cable Using LMR-100 Coax with HeatShrink PE3C3937/HS](#)

URL: <https://www.pasternack.com/push-on-smp-female-right-angle-to-sma-female-bulkhead-low-loss-cable-using-lmr-100-with-heatshrink-pe3c3937-hs-p.aspx>

The information contained within this document is accurate to the best of our knowledge and representative of the part described herein. It may be necessary to make modifications to the part and/or the documentation of the part in order to impliment improvements. Pasternack Enterprises reserves the right to make such changes as required. Unless otherwise stated, all specifications are nominal. Pasternack Enterprises does not make any representation or warranty regarding the suitability of the part described herein for any particular purpose, and Pasternack Enterprises does not assume liability arising out of the use of any part or document.

PE3C3937/HS CAD Drawing

Push-On SMP Female Right Angle to SMA Female Bulkhead Low Loss Cable Using LMR-100 Coax with HeatShrink



NOTES:

1. CABLE ASSEMBLY LENGTH LABEL PLACEMENT: 36 INCHES OR LESS; ONE LABEL APPROXIMATELY CENTERED. LONGER THAN 36 INCHES, TWO LABELS APPROXIMATELY 6 INCHES FROM EACH CONNECTOR.
2. CABLE ASSEMBLY SHALL BE TESTED FOR CONTINUITY.
3. CABLE ASSEMBLY LENGTH DETERMINED BY ITEM PN AND DESCRIPTION.

THE INFORMATION CONTAINED IN THIS DRAWING IS THE SOLE PROPERTY OF INFINITE ELECTRONICS, INC. ANY REPRODUCTION IN PART OR WHOLE WITHOUT THE WRITTEN PERMISSION OF INFINITE ELECTRONICS, INC. IS PROHIBITED. THESE COMMODITIES, TECHNOLOGY OR SOFTWARE ARE EXPORTED FROM THE UNITED STATES IN ACCORDANCE WITH THE EXPORT ADMINISTRATION REGULATIONS. DIVERSION CONTRARY TO U.S. LAW PROHIBITED.

PE DS Rev-04 Add2