

N Male to N Female 4 Hole Flange Cable Using RG142 Coax



PE3C4512

Configuration

- Connector 1: N Male
- Connector 2: N Female 4 Hole Flange
- Cable Type: RG142
- Coax Flex Type: Flexible

Features

- Max Frequency 3 GHz
- 70% Phase Velocity
- Double Shielded
- FEP Jacket



Applications

- General Purpose
- Laboratory Use

Description

Pasternack's PE3C4512 type N male to type N female 4 hole flange cable using RG142 coax is part of our full line of RF components available for same-day shipping. Pasternack's flexible RF cable assemblies are ideal for applications where tight bends and flexure are required. This Pasternack type N to type N cable assembly has a male to female gender configuration with 50 ohm flexible RG142 coax. The PE3C4512 type N male to type N female cable assembly operates to 3 GHz. Our RF cable assembly with type N 4 hole flange interface allows designers to create external connections on their product enclosures, and can be used in a variety of other rack mount and panel mount applications. The double shielding of this Pasternack cable assembly provides excellent shielding effectiveness.

Custom versions of most RF cable assemblies can be built and shipped same day. Custom cable assembly lengths can be obtained by specifying the desired length on the web site at time of order or by contacting a sales representative. Other available RF cable assembly value added services include connector orientation or clocking, heat shrink booting and custom labeling. RF testing can also be performed to document the electrical performance of your cable assembly.

Electrical Specifications

Description	Minimum	Typical	Maximum	Units
Frequency Range	DC		3	GHz
VSWR			1.5:1	
Velocity of Propagation		70		%
Capacitance		29.4 [96.46]		pF/ft [pF/m]

Specifications by Frequency

N Male to N Female 4 Hole Flange Cable Using RG142 Coax



PE3C4512

Part Number	Length	Description	F1	F2	F3	F4	F5	Units	Weight (lbs)
			Frequency		100	250	500	1000	
PE3C4512	Custom Lengths Available	Insertion Loss (Typ.)	0.04	0.06	0.087	0.129	0.239	dB/ft	
			0.13	0.2	0.29	0.43	0.79	dB/m	
PE3C4512-12	12 inch	Insertion Loss (Typ.)	0.24	0.26	0.29	0.33	0.44	dB	0.205
PE3C4512-24	24 inch	Insertion Loss (Typ.)	0.28	0.32	0.38	0.46	0.68	dB	0.247
PE3C4512-36	36 inch	Insertion Loss (Typ.)	0.32	0.38	0.47	0.59	0.92	dB	0.289
PE3C4512-48	48 inch	Insertion Loss (Typ.)	0.36	0.44	0.55	0.72	1.16	dB	0.331
PE3C4512-60	60 inch	Insertion Loss (Typ.)	0.4	0.5	0.64	0.85	1.4	dB	0.373

The insertion loss data for the base model does not include loss due to the connectors. Each length includes insertion loss due to the connectors.

Loss due to Connector 1:	0.1 dB
Loss due to Connector 2:	0.1 dB
Base Weight:	0.205 pounds
Additional Weight per Inch:	0.0035 pounds

Mechanical Specifications

Cable Assembly

Width/Diameter	0.5 in [12.7 mm]
Weight	0.205 lbs [92.99 g]

Cable

Cable Type	RG142
Impedance	50 Ohms
Inner Conductor Type	Solid
Inner Conductor Material and Plating	Copper Clad Steel, Silver
Dielectric Type	PTFE
Number of Shields	2
Shield Layer 1	Silver Plated Copper Braid
Shield Layer 2	Silver Plated Copper Braid
Jacket Material	FEP, Tan
Jacket Diameter	0.195 in [4.95 mm]
Repeated Minimum Bend Radius	1 in [25.4 mm]

N Male to N Female 4 Hole Flange Cable Using RG142 Coax



PE3C4512

Connectors

Description	Connector 1	Connector 2
Type	N Male	N Female 4 Hole Flange
Specification	MIL-STD-348	
Impedance	50 Ohms	50 Ohms
Configuration	Straight	Straight
Contact Material and Plating	Brass, Silver	Brass, Gold
Contact Plating Specification	ASTM-B700	30 µin minimum
Dielectric Type	PTFE	
Body Material and Plating	Brass, Nickel	Brass, Nickel
Body Plating Specification	ASTM-B689	100 µin minimum
Coupling Nut Material and Plating	Brass, Nickel	
Coupling Nut Plating Specification	ASTM-B689	

Environmental Specifications

Operating Range Temperature -55 to +165 deg C

Compliance Certifications (see [product page](#) for current document)

Plotted and Other Data

Notes:

N Male to N Female 4 Hole Flange Cable Using RG142 Coax



PE3C4512

Typical Performance Data

How to Order

Part Number Configuration:

PE3C4512

- **xx**

uu

Unit of Measure:

cm = Centimeters

<blank> = Inches

Length

Base Number

Example: PE3C4512-12 = 12 inches long cable
PE3C4512-100cm = 100 cm long cable

N Male to N Female 4 Hole Flange Cable Using RG142 Coax from Pasternack Enterprises has same day shipment for domestic and International orders. Our RF, microwave and millimeter wave products maintain a 99.4% availability and are part of the broadest selection in the industry.

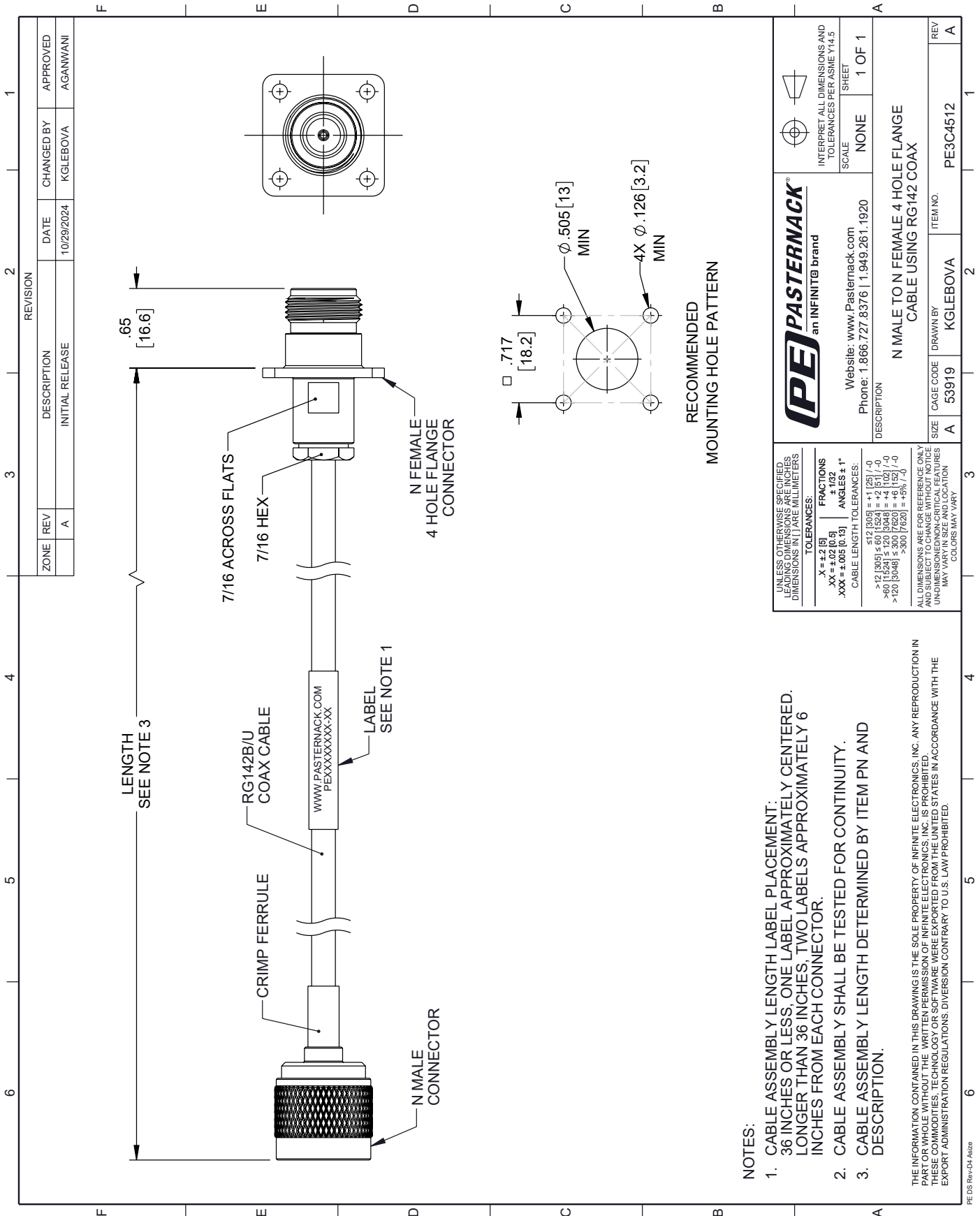
Click the following link (or enter part number in "SEARCH" on website) to obtain additional part information including price, inventory and certifications: [N Male to N Female 4 Hole Flange Cable Using RG142 Coax PE3C4512](#)

URL: <https://www.pasternack.com/n-male-to-n-female-4-hole-flange-cable-using-rg142-pe3c4512-p.aspx>

The information contained within this document is accurate to the best of our knowledge and representative of the part described herein. It may be necessary to make modifications to the part and/or the documentation of the part in order to implement improvements. Pasternack Enterprises reserves the right to make such changes as required. Unless otherwise stated, all specifications are nominal. Pasternack Enterprises does not make any representation or warranty regarding the suitability of the part described herein for any particular purpose, and Pasternack Enterprises does not assume liability arising out of the use of any part or document.

PE3C4512 CAD Drawing

N Male to N Female 4 Hole Flange Cable Using RG142 Coax



NOTES:

1. CABLE ASSEMBLY LENGTH LABEL PLACEMENT: 36 INCHES OR LESS, ONE LABEL APPROXIMATELY CENTERED, LONGER THAN 36 INCHES, TWO LABELS APPROXIMATELY 6 INCHES FROM EACH CONNECTOR.
2. CABLE ASSEMBLY SHALL BE TESTED FOR CONTINUITY.
3. CABLE ASSEMBLY LENGTH DETERMINED BY ITEM PN AND DESCRIPTION.

THE INFORMATION CONTAINED IN THIS DRAWING IS THE SOLE PROPERTY OF INFINITE ELECTRONICS, INC. ANY REPRODUCTION IN PART OR WHOLE, WITHOUT THE WRITTEN PERMISSION OF INFINITE ELECTRONICS, INC. IS PROHIBITED. THESE COMMODITIES, TECHNOLOGY OR SOFTWARE WERE EXPORTED FROM THE UNITED STATES IN ACCORDANCE WITH THE EXPORT ADMINISTRATION REGULATIONS. DIVERSION CONTRARY TO U.S. LAW PROHIBITED.

PE_DS Rev-C4 Asstz

ZONE	REV	DESCRIPTION	DATE	CHANGED BY	APPROVED
	A	INITIAL RELEASE	10/29/2024	KGLEBOVA	AGANWANI

<p>PASTERNACK an INFINITe brand</p>		<p>INTERPRET ALL DIMENSIONS AND TOLERANCES PER ASME Y14.5</p> <p>SCALE: NONE</p> <p>SHEET: 1 OF 1</p>
<p>Website: www.Pasternack.com</p> <p>Phone: 1.866.727.8376 1.949.261.1920</p>		<p>DESCRIPTION: N MALE TO N FEMALE 4 HOLE FLANGE CABLE USING RG142 COAX</p>
<p>SIZE: A</p>	<p>CAGE CODE: 53919</p>	<p>ITEM NO.: PE3C4512</p>
<p>DRAWN BY: KGLEBOVA</p>	<p>REV: A</p>	

UNLESS OTHERWISE SPECIFIED, LEADING DIMENSIONS ARE IN INCHES, DIMENSIONS IN [] ARE IN MILLIMETERS

TOLERANCES:	FRACTIONS:
.X = ±.2 [5]	± 1/32
.XX = ±.02 [0.5]	ANGLES ± 1°
.XXX = ±.005 [0.13]	

CABLE LENGTH TOLERANCES:

<12 [305]	±.11 [28]	/-0
>12 [305] ≤ 60 [1524]	±.15 [3.8]	/-0
>60 [1524] ≤ 120 [3048]	±.20 [5.1]	/-0
>120 [3048] ≤ 300 [7620]	±.30 [7.6]	/-0
>300 [7620]	±.50 [12.7]	/-0

ALL DIMENSIONS ARE FOR REFERENCE ONLY AND SUBJECT TO CHANGE WITHOUT NOTICE. DIMENSIONS IN PARENTHESES ARE APPROXIMATE. DIMENSIONS MAY VARY IN SIZE AND LOCATION. COLORS MAY VARY.