

## SMA Male to Trimmed Lead Cable Using RG196 Coax



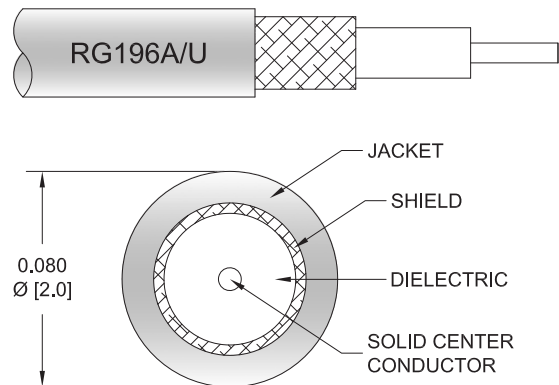
### PE3C5018/S

#### Configuration

- Connector 1: SMA Male
- Connector 2: Trimmed Lead
- Cable Type: RG196
- Coax Flex Type: Flexible

#### Features

- PTFE Jacket



#### Applications

- General Purpose
- Laboratory Use

#### Description

Pasternack's PE3C5018/S 50 ohm SMA male to trimmed lead cable using RG196 coax is part of our full line of RF components available for same-day shipping. Pasternack's flexible RF cable assemblies are ideal for applications where tight bends and flexure are required.

Custom versions of most RF cable assemblies can be built and shipped same day. Custom cable assembly lengths can be obtained by specifying the desired length on the web site at time of order or by contacting a sales representative. Other available RF cable assembly value added services include connector orientation or clocking, heat shrink booting and custom labeling. RF testing can also be performed to document the electrical performance of your cable assembly.

#### Electrical Specifications

Description	Minimum	Typical	Maximum	Units
Capacitance		32 [104.99]		pF/ft [pF/m]

#### Mechanical Specifications

##### Cable Assembly

Weight 0.024 lbs [10.89 g]

##### Cable

Cable Type RG196  
 Impedance 50 Ohms  
 Inner Conductor Type Stranded  
 Inner Conductor Material and Plating Copper Clad Steel, Silver  
 Dielectric Type PTFE  
 Number of Shields 1  
 Shield Layer 1 Silver Plated Copper Braid  
 Jacket Material PTFE, White  
 Jacket Diameter 0.08 in [2.03 mm]

## SMA Male to Trimmed Lead Cable Using RG196 Coax



### PE3C5018/S

#### Connectors

Description	Connector 1	Connector 2
Type	SMA Male	Trimmed Lead
Specification	MIL-STD-348A	
Impedance	50 Ohms	0 Ohms
Configuration	Straight	Straight
Contact Material and Plating	Brass, Gold	
Contact Plating Specification	50 µin minimum	
Dielectric Type	PTFE	
Body Material and Plating	Brass, Nickel	
Body Plating Specification	100 µin minimum	
Coupling Nut Material and Plating	Brass, Nickel	
Coupling Nut Plating Specification	100 µin minimum	
Hex Size	5/16 inch	
Torque	3 in-lbs 0.34 Nm	

#### Environmental Specifications

**Compliance Certifications** (see [product page](#) for current document)

#### Plotted and Other Data

Notes:

## SMA Male to Trimmed Lead Cable Using RG196 Coax

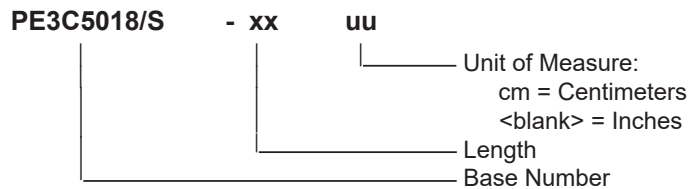


### PE3C5018/S

#### Typical Performance Data

#### How to Order

Part Number Configuration:



Example: PE3C5018/S-12 = 12 inches long cable  
PE3C5018/S-100cm = 100 cm long cable

SMA Male to Trimmed Lead Cable Using RG196 Coax from Pasternack Enterprises has same day shipment for domestic and International orders. Our RF, microwave and millimeter wave products maintain a 99.4% availability and are part of the broadest selection in the industry.

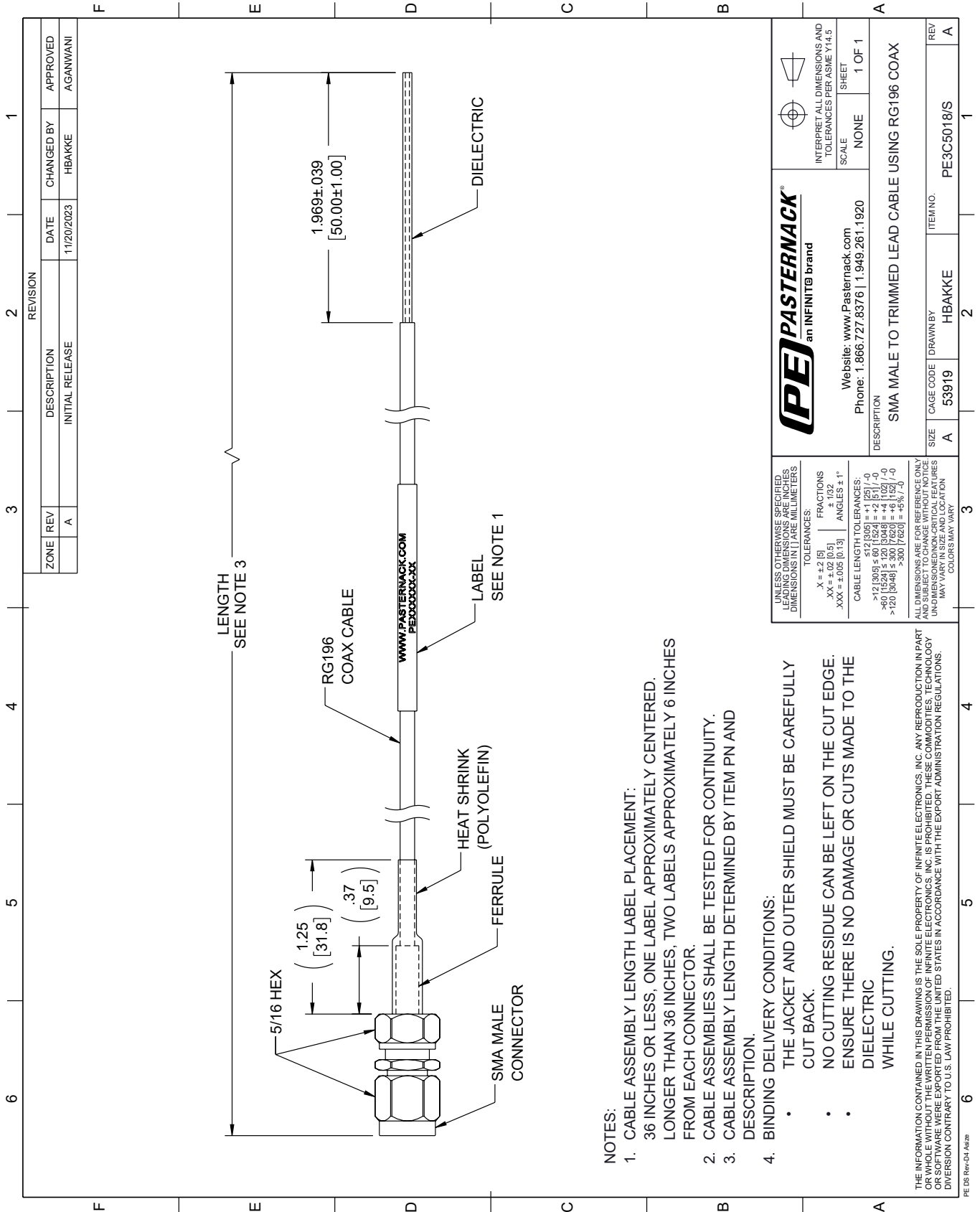
Click the following link (or enter part number in "SEARCH" on website) to obtain additional part information including price, inventory and certifications: [SMA Male to Trimmed Lead Cable Using RG196 Coax PE3C5018/S](#)

URL: <https://www.pasternack.com/sma-male-to-trimmed-lead-cable-using-rg196-pe3c5018-s-p.aspx>

The information contained within this document is accurate to the best of our knowledge and representative of the part described herein. It may be necessary to make modifications to the part and/or the documentation of the part in order to impliment improvements. Pasternack Enterprises reserves the right to make such changes as required. Unless otherwise stated, all specifications are nominal. Pasternack Enterprises does not make any representation or warranty regarding the suitability of the part described herein for any particular purpose, and Pasternack Enterprises does not assume liability arising out of the use of any part or document.

# PE3C5018/S CAD Drawing

## SMA Male to Trimmed Lead Cable Using RG196 Coax



REVISION		DATE	CHANGED BY	APPROVED
ZONE	REV			
	A	11/20/2023	HBAKKE	AGANWANI
DESCRIPTION				
INITIAL RELEASE				

### NOTES:

- CABLE ASSEMBLY LENGTH LABEL PLACEMENT:  
36 INCHES OR LESS, ONE LABEL APPROXIMATELY CENTERED.  
LONGER THAN 36 INCHES, TWO LABELS APPROXIMATELY 6 INCHES FROM EACH CONNECTOR.
- CABLE ASSEMBLIES SHALL BE TESTED FOR CONTINUITY.
- CABLE ASSEMBLY LENGTH DETERMINED BY ITEM PN AND DESCRIPTION.
- BINDING DELIVERY CONDITIONS:
  - THE JACKET AND OUTER SHIELD MUST BE CAREFULLY CUT BACK.
  - NO CUTTING RESIDUE CAN BE LEFT ON THE CUT EDGE.
  - ENSURE THERE IS NO DAMAGE OR CUTS MADE TO THE DIELECTRIC WHILE CUTTING.

 an INFINITE brand		 INTERPRET ALL DIMENSIONS AND TOLERANCES PER ASME Y14.5
Website: <a href="http://www.Pasternack.com">www.Pasternack.com</a> Phone: 1.866.727.8376   1.949.261.1920		SCALE: NONE SHEET: 1 OF 1
DESCRIPTION: SMA MALE TO TRIMMED LEAD CABLE USING RG196 COAX		
SIZE: A	CAGE CODE: 53919	ITEM NO.: PE3C5018/S
DRAWN BY: HBAKKE		REV: A

UNLESS OTHERWISE SPECIFIED, LEADING DIMENSIONS ARE IN INCHES. DIMENSIONS IN [ ] ARE MILLIMETERS.

TOLERANCES:  
 .X = ±.2 [5]  
 .XX = ±.02 [0.5]  
 .XXX = ±.005 [0.13]  
 FRACTIONS: ± 1/32  
 ANGLES: ± 1°

CABLE LENGTH TOLERANCES:  
 <12 [305] ≤ 60 [1524] = ±.1 [2.5] / -0  
 >60 [1524] ≤ 120 [3048] = ±.4 [102] / -0  
 >120 [3048] ≤ 300 [7620] = ±.6 [15.2] / -0  
 >300 [7620] = ±.8 [20.3] / -0

ALL DIMENSIONS ARE FOR REFERENCE ONLY. UNLESS OTHERWISE SPECIFIED, DIMENSIONS ARE IN INCHES. DIMENSIONS IN [ ] ARE MILLIMETERS. UNLESS OTHERWISE SPECIFIED, LEADING DIMENSIONS ARE IN INCHES. DIMENSIONS IN [ ] ARE MILLIMETERS. COLORS MAY VARY.

THE INFORMATION CONTAINED IN THIS DRAWING IS THE SOLE PROPERTY OF INFINITE ELECTRONICS, INC. ANY REPRODUCTION IN PART OR WHOLE WITHOUT THE WRITTEN PERMISSION OF INFINITE ELECTRONICS, INC. IS PROHIBITED. THESE COMMODITIES, TECHNOLOGY OR SOFTWARE ARE EXPORTED FROM THE UNITED STATES IN ACCORDANCE WITH THE EXPORT ADMINISTRATION REGULATIONS. DIVERSION CONTRARY TO U.S. LAW PROHIBITED.

PE DS Rev-04 Add2