



2.4mm Male to 2.4mm Male Cable Using PE-SR405AL Coax, LF Solder

RF Cable Assemblies Technical Data Sheet

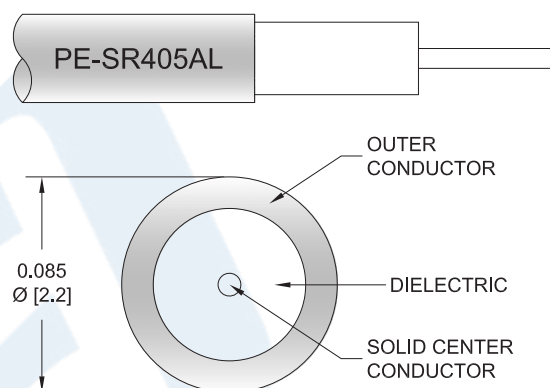
PE3C5640LF

Configuration

- Connector 1: 2.4mm Male
- Connector 2: 2.4mm Male
- Cable Type: PE-SR405AL

Features

- Max Frequency 40 GHz
- 500 Mating Cycles



Applications

- General Purpose
- Laboratory Use

Description

Pasternack's PE3C5640LF 2.4mm male to 2.4mm male cable using PE-SR405AL coax is part of our full line of RF components available for same-day shipping. Pasternack's semi-rigid RF cable assemblies are ideal for high performance applications and can be formed, using proper tooling, to the routing pattern required. This Pasternack 2.4mm to 2.4mm cable assembly has a male to male gender configuration with 50 ohm semi-rigid PE-SR405AL coax. The PE3C5640LF 2.4mm male to 2.4mm male cable assembly operates to 40 GHz.

Custom versions of most RF cable assemblies can be built and shipped same day. Custom cable assembly lengths can be obtained by specifying the desired length on the web site at time of order or by contacting a sales representative. Other available RF cable assembly value added services include connector orientation or clocking, heat shrink booting and custom labeling. RF testing can also be performed to document the electrical performance of your cable assembly.

Click the following link (or enter part number in "SEARCH" on website) to obtain additional part information including price, inventory and certifications: [2.4mm Male to 2.4mm Male Cable Using PE-SR405AL Coax, LF Solder PE3C5640LF](#)



2.4mm Male to 2.4mm Male Cable Using PE-SR405AL Coax, LF Solder

RF Cable Assemblies Technical Data Sheet

PE3C5640LF

Electrical Specifications

Description	Minimum	Typical	Maximum	Units
Frequency Range	DC		40	GHz
VSWR			1.4:1	
Dielectric Withstanding Voltage (AC)			1,000	Vrms

Specifications by Frequency

Description	F1	F2	F3	F4	F5	Units
Frequency	1	2	4.5	9	20	GHz
Insertion Loss (Typ.)	0.23	0.294	0.455	0.745	1.31	dB/ft
	0.75	0.96	1.49	2.44	4.3	dB/m

Electrical Specification Notes:

Insertion Loss does not include the loss of the connectors. Insertion Loss is estimated as $0.04 \times \sqrt{\text{fGHz}}$ dB per connector.

Mechanical Specifications

Cable Assembly

Cable

Cable Type	PE-SR405AL
Impedance	50 Ohms
Inner Conductor Type	Solid
Inner Conductor Material and Plating	Copper Clad Steel, Silver
Dielectric Type	PTFE
Number of Shields	1
Outer Conductor Material and Plating	Tinned Aluminum
One Time Minimum Bend Radius	0.05 in [1.27 mm]

Click the following link (or enter part number in "SEARCH" on website) to obtain additional part information including price, inventory and certifications: [2.4mm Male to 2.4mm Male Cable Using PE-SR405AL Coax, LF Solder PE3C5640LF](#)



2.4mm Male to 2.4mm Male Cable Using
PE-SR405AL Coax, LF Solder

RF Cable Assemblies Technical Data Sheet

PE3C5640LF

Connectors

Description	Connector 1	Connector 2
Type	2.4mm Male	2.4mm Male
Impedance	50 Ohms	50 Ohms
Mating Cycles	500	500
Contact Material and Plating	Beryllium Copper, Gold over Nickel	Beryllium Copper, Gold over Nickel
Contact Plating Specification	50 µin minimum	50 µin minimum
Dielectric Type	PEI	PEI
Body Material and Plating	Beryllium Copper, Gold over Nickel	Beryllium Copper, Gold over Nickel
Body Plating Specification	50 µin minimum	50 µin minimum
Coupling Nut Material and Plating	Passivated Stainless Steel	Passivated Stainless Steel
Coupling Nut Plating Specification	ASTM-A582	ASTM-A582
Hex Size	5/16 inch	5/16 inch
Torque	8 in-lbs [0.9 Nm]	8 in-lbs [0.9 Nm]

Environmental Specifications

Temperature

Operating Range -55 to +125 deg C

Compliance Certifications (see [product page](#) for current document)

Plotted and Other Data

Notes:

Click the following link (or enter part number in "SEARCH" on website) to obtain additional part information including price, inventory and certifications: [2.4mm Male to 2.4mm Male Cable Using PE-SR405AL Coax, LF Solder PE3C5640LF](#)



2.4mm Male to 2.4mm Male Cable Using PE-SR405AL Coax, LF Solder

RF Cable Assemblies Technical Data Sheet

PE3C5640LF

How to Order

Part Number Configuration:

PE3C5640LF

- **xx**

uu

Unit of Measure:
cm = Centimeters
<blank> = Inches
Length
Base Number

Example: PE3C5640LF-12 = 12 inches long cable
PE3C5640LF-100cm = 100 cm long cable

2.4mm Male to 2.4mm Male Cable Using PE-SR405AL Coax, LF Solder from Pasternack Enterprises has same day shipment for domestic and International orders. Our RF, microwave and millimeter wave products maintain a 99.4% availability and are part of the broadest selection in the industry.

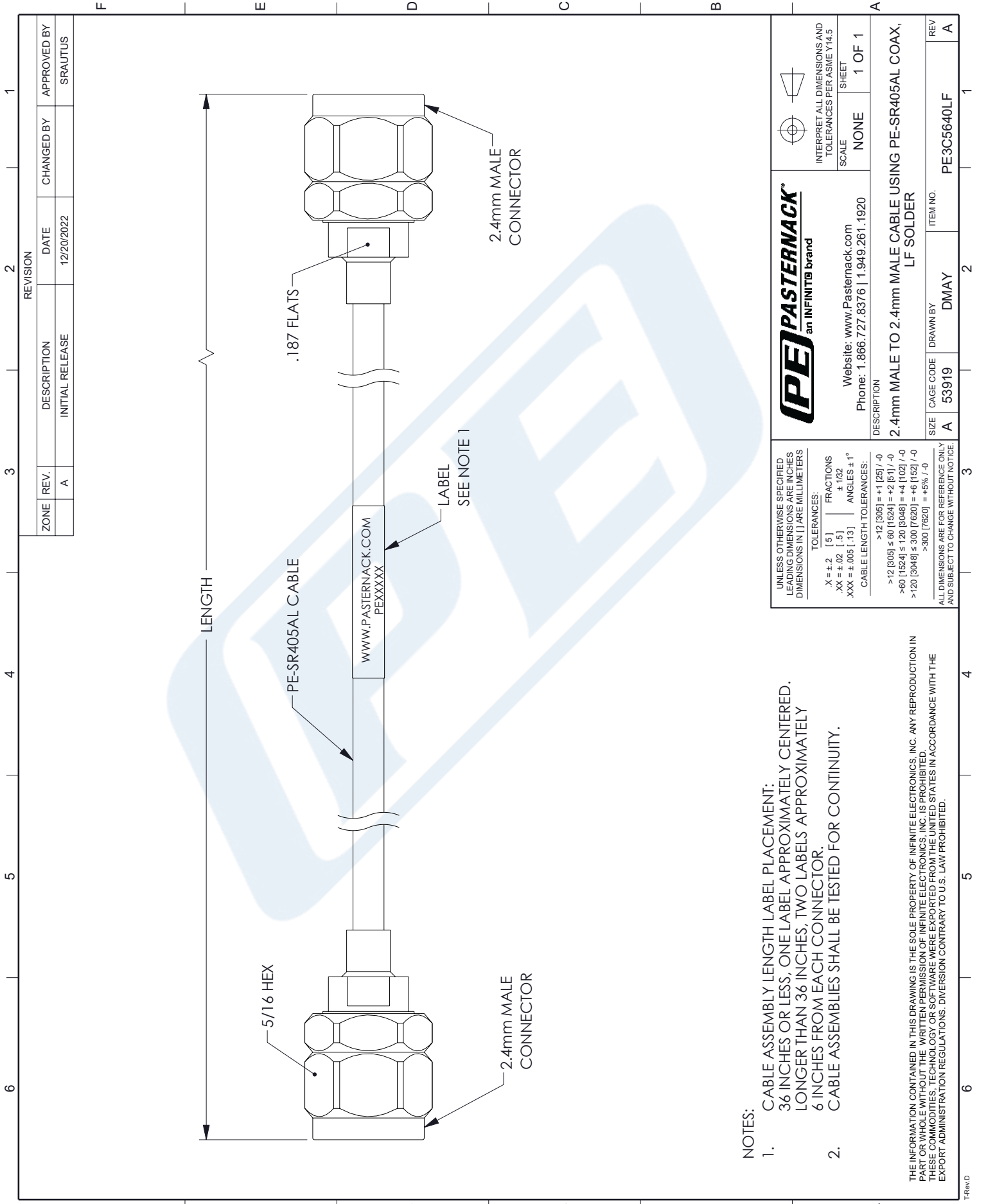
Click the following link (or enter part number in "SEARCH" on website) to obtain additional part information including price, inventory and certifications: [2.4mm Male to 2.4mm Male Cable Using PE-SR405AL Coax, LF Solder PE3C5640LF](#)

URL:

The information contained in this document is accurate to the best of our knowledge and representative of the part described herein. It may be necessary to make modifications to the part and/or the documentation of the part, in order to implement improvements. Pasternack reserves the right to make such changes as required. Unless otherwise stated, all specifications are nominal. Pasternack does not make any representation or warranty regarding the suitability of the part described herein for any particular purpose, and Pasternack does not assume any liability arising out of the use of any part or documentation.

PE3C5640LF CAD Drawing



2.4mm Male to 2.4mm Male Cable Using PE-SR405AL Coax, LF Solder



NOTES:

- CABLE ASSEMBLY LENGTH LABEL PLACEMENT:
36 INCHES OR LESS, ONE LABEL APPROXIMATELY CENTERED.
LONGER THAN 36 INCHES, TWO LABELS APPROXIMATELY
6 INCHES FROM EACH CONNECTOR.
 - CABLE ASSEMBLIES SHALL BE TESTED FOR CONTINUITY.
- THE INFORMATION CONTAINED IN THIS DRAWING IS THE SOLE PROPERTY OF INFINITE ELECTRONICS, INC. ANY REPRODUCTION IN PART OR WHOLE WITHOUT THE WRITTEN PERMISSION OF INFINITE ELECTRONICS, INC. IS PROHIBITED.
THESE COMMODITIES, TECHNOLOGY OR SOFTWARE WERE EXPORTED FROM THE UNITED STATES IN ACCORDANCE WITH THE EXPORT ADMINISTRATION REGULATIONS. DIVERSION CONTRARY TO U.S. LAW PROHIBITED.

UNLESS OTHERWISE SPECIFIED LEADING DIMENSIONS ARE INCHES DIMENSIONS IN [] ARE MILLIMETERS	
TOLERANCES:	FRACTIONS
X = ±.2 [.5]	± 1/32
.XX = ±.02 [.5]	± 1/16
XXX = ±.005 [.13]	ANGLES ± 1°
CABLE LENGTH TOLERANCES:	
>12 [305] = +1 [25] / -0	
>12 [305] ≤ 60 [1524] = +2 [51] / -0	
>60 [1524] ≤ 120 [3048] = +4 [102] / -0	
>120 [3048] ≤ 300 [7620] = +6 [152] / -0	
>300 [7620] = +5% / -0	
ALL DIMENSIONS ARE FOR REFERENCE ONLY AND SUBJECT TO CHANGE WITHOUT NOTICE.	

 PASTERNAK an INFINITI [®] brand		 INTERPRET ALL DIMENSIONS AND TOLERANCES PER ASME Y14.5 SCALE NONE SHEET 1 OF 1	
Website: www.Pasternack.com Phone: 1.866.727.8376 1.949.261.1920		DESCRIPTION 2.4mm MALE TO 2.4mm MALE CABLE USING PE-SR405AL COAX, LF SOLDER	
SIZE	CAGE CODE	DRAWN BY	ITEM NO.
A	53919	DMAY	PE3C5640LF
REV	A		