

## SMA Male to Straight Cut Lead Cable Using RG174 Coax with HeatShrink



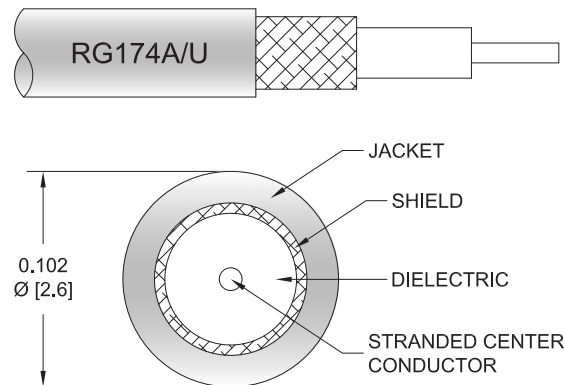
### PE3C6015/HS

#### Configuration

- Connector 1: SMA Male
- Connector 2: Straight Cut Lead
- Cable Type: RG174
- Coax Flex Type: Flexible

#### Features

- 66% Phase Velocity
- PVC Jacket



#### Applications

- General Purpose
- Laboratory Use

#### Description

Pasternack's PE3C6015/HS 50 ohm SMA male to straight cut lead cable using RG174 coax is part of our full line of RF components available for same-day shipping. Pasternack's flexible RF cable assemblies are ideal for applications where tight bends and flexure are required.

Custom versions of most RF cable assemblies can be built and shipped same day. Custom cable assembly lengths can be obtained by specifying the desired length on the web site at time of order or by contacting a sales representative. Other available RF cable assembly value added services include connector orientation or clocking, heat shrink booting and custom labeling. RF testing can also be performed to document the electrical performance of your cable assembly.

#### Electrical Specifications

Description	Minimum	Typical	Maximum	Units
Velocity of Propagation		66		%
Capacitance		31.08 [101.97]		pF/ft [pF/m]

#### Mechanical Specifications

##### Cable Assembly

Weight 0.02 lbs [9.07 g]

##### Cable

Cable Type RG174  
 Impedance 50 Ohms  
 Inner Conductor Type Stranded  
 Inner Conductor Material and Plating Copper Clad Steel  
 Dielectric Type PE  
 Number of Shields 1  
 Shield Layer 1 Tinned Copper Braid  
 Jacket Material PVC, Black

## SMA Male to Straight Cut Lead Cable Using RG174 Coax with HeatShrink



### PE3C6015/HS

Jacket Diameter 0.11 in [2.79 mm]

#### Connectors

Description	Connector 1	Connector 2
Type	SMA Male	Straight Cut Lead
Impedance	50 Ohms	0 Ohms
Configuration	Straight	Straight
Contact Material and Plating	Brass, Gold	
Dielectric Type	PTFE	
Body Material and Plating	Brass, Gold	
Coupling Nut Material and Plating	Brass, Gold	
Hex Size	5/16 in	
Torque	5 in-lbs 0.57 Nm	

#### Environmental Specifications

**Compliance Certifications** (see [product page](#) for current document)

#### Plotted and Other Data

Notes:

## SMA Male to Straight Cut Lead Cable Using RG174 Coax with HeatShrink



### PE3C6015/HS

#### Typical Performance Data

#### How to Order

Part Number Configuration:

**PE3C6015/HS - xx uu**

Unit of Measure:  
cm = Centimeters  
<blank> = Inches

Length

Base Number

Example: PE3C6015/HS-12 = 12 inches long cable  
PE3C6015/HS-100cm = 100 cm long cable

SMA Male to Straight Cut Lead Cable Using RG174 Coax with HeatShrink from Pasternack Enterprises has same day shipment for domestic and International orders. Our RF, microwave and millimeter wave products maintain a 99.4% availability and are part of the broadest selection in the industry.

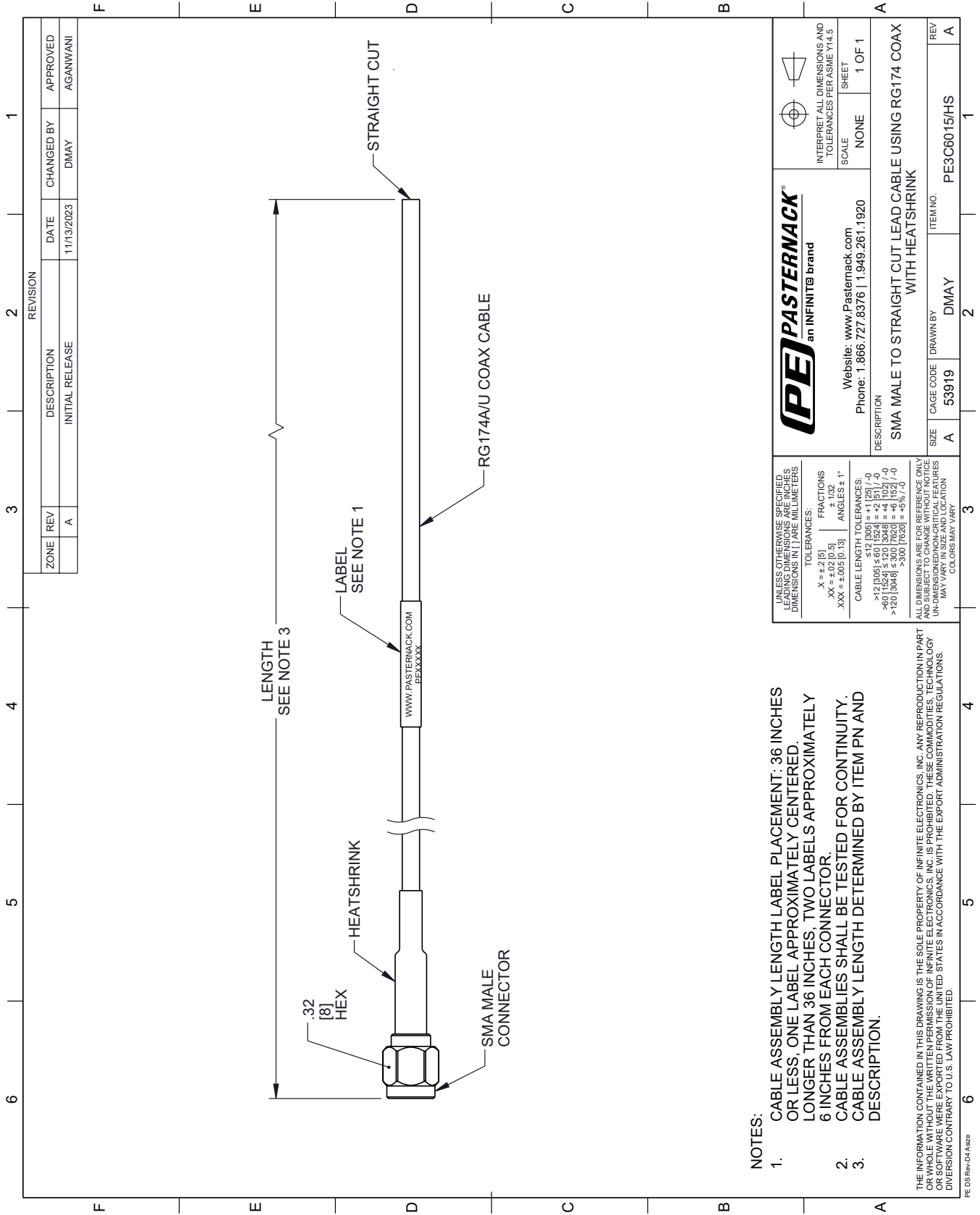
Click the following link (or enter part number in "SEARCH" on website) to obtain additional part information including price, inventory and certifications: [SMA Male to Straight Cut Lead Cable Using RG174 Coax with HeatShrink PE3C6015/HS](#)

URL: <https://www.pasternack.com/sma-male-to-straight-cut-lead-cable-using-rg174-with-heatshrink-pe3c6015-hs-p.aspx>

The information contained within this document is accurate to the best of our knowledge and representative of the part described herein. It may be necessary to make modifications to the part and/or the documentation of the part in order to implement improvements. Pasternack Enterprises reserves the right to make such changes as required. Unless otherwise stated, all specifications are nominal. Pasternack Enterprises does not make any representation or warranty regarding the suitability of the part described herein for any particular purpose, and Pasternack Enterprises does not assume liability arising out of the use of any part or document.

# PE3C6015/HS CAD Drawing

SMA Male to Straight Cut Lead Cable Using RG174 Coax with HeatShrink



**NOTES:**

1. CABLE ASSEMBLY LENGTH LABEL PLACEMENT: 36 INCHES OR LESS, ONE LABEL APPROXIMATELY CENTERED. LONGER THAN 36 INCHES, TWO LABELS APPROXIMATELY 6 INCHES FROM EACH CONNECTOR.
2. CABLE ASSEMBLIES SHALL BE TESTED FOR CONTINUITY.
3. CABLE ASSEMBLY LENGTH DETERMINED BY ITEM PN AND DESCRIPTION.

THE INFORMATION CONTAINED IN THIS DRAWING IS THE SOLE PROPERTY OF INFINITE ELECTRONICS, INC. ANY REPRODUCTION IN PART OR WHOLE WITHOUT THE WRITTEN PERMISSION OF INFINITE ELECTRONICS, INC. IS PROHIBITED. THESE COMMODITY TECHNOLOGY OR SOFTWARE WERE EXPORTED FROM THE UNITED STATES IN ACCORDANCE WITH THE EXPORT ADMINISTRATION REGULATIONS. DIVERSION CONTRARY TO U.S. LAW PROHIBITED.

UNLESS OTHERWISE SPECIFIED, LEADING DIMENSIONS ARE INCHES, DIMENSIONS IN [ ] ARE MILLIMETERS

TOLERANCES:

.X = ±.2 [5] | FRACTIONS ±.1 [32]

.XX = ±.02 [0.5] | ANGLES ± 1°

.XXX = ±.005 [0.13]

CABLE LENGTH TOLERANCES:

≤ 12 [305] = +1 [25] / -0

> 12 [305] ≤ 60 [1524] = +2 [51] / -0

> 60 [1524] ≤ 300 [7620] = +4 [102] / -0

> 300 [7620] = +5% / -0

ALL DIMENSIONS ARE FOR REFERENCE ONLY AND SUBJECT TO CHANGE WITHOUT NOTICE. UNDIMENSIONED NON-CRITICAL FEATURES MAY VARY IN SIZE AND LOCATION. CALCULATED YEAR.

<p><b>PASTERNAK</b> an INFINIT® brand</p>		<p>INTERPRET ALL DIMENSIONS AND TOLERANCES PER ASME Y14.5</p>
Website: <a href="http://www.Pasternack.com">www.Pasternack.com</a> Phone: 1.866.727.8376   1.949.261.1920		SCALE: NONE SHEET: 1 OF 1
DESCRIPTION: SMA MALE TO STRAIGHT CUT LEAD CABLE USING RG174 COAX WITH HEATSHRINK		
SIZE: A	CAGE CODE: 53919	DRAWN BY: DMAY
REV: A	ITEM NO.: PE3C6015/HS	REV: A