



N Female to SMA Male Cable Using PE-SR402AL Coax

RF Cable Assemblies Technical Data Sheet

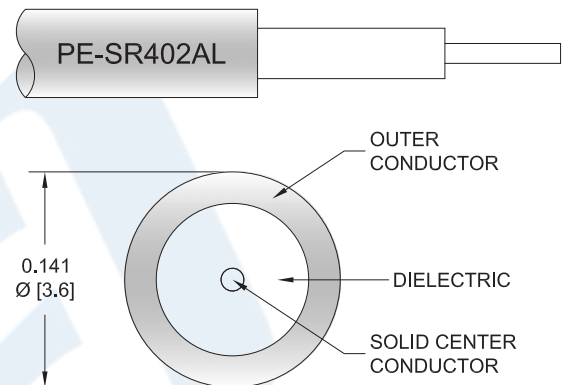
PE3C6462

Configuration

- Connector 1: N Female
- Connector 2: SMA Male
- Cable Type: PE-SR402AL

Features

- Max Frequency 11 GHz



Applications

- General Purpose
- Laboratory Use

Description

Pasternack's PE3C6462 type N female to SMA male cable using PE-SR402AL coax is part of our full line of RF components available for same-day shipping. Pasternack's semi-rigid RF cable assemblies are ideal for high performance applications and can be formed, using proper tooling, to the routing pattern required. This Pasternack type N to SMA cable assembly has a female to male gender configuration with 50 ohm semi-rigid PE-SR402AL coax. The PE3C6462 type N female to SMA male cable assembly operates to 11 GHz.

Custom versions of most RF cable assemblies can be built and shipped same day. Custom cable assembly lengths can be obtained by specifying the desired length on the web site at time of order or by contacting a sales representative. Other available RF cable assembly value added services include connector orientation or clocking, heat shrink booting and custom labeling. RF testing can also be performed to document the electrical performance of your cable assembly.

Click the following link (or enter part number in "SEARCH" on website) to obtain additional part information including price, inventory and certifications: [N Female to SMA Male Cable Using PE-SR402AL Coax PE3C6462](#)



N Female to SMA Male Cable Using PE-SR402AL Coax

RF Cable Assemblies Technical Data Sheet

PE3C6462

Electrical Specifications

Description	Minimum	Typical	Maximum	Units
Frequency Range	DC		11	GHz
VSWR			1.4:1	

Specifications by Frequency

Description	F1	F2	F3	F4	F5	Units
Frequency	1	2.5	5	10	11	GHz
Insertion Loss (Typ.)	0.13	0.185	0.276	0.46	0.485	dB/ft
	0.43	0.61	0.91	1.51	1.59	dB/m

Electrical Specification Notes:

Insertion Loss does not include the loss of the connectors. Insertion Loss is estimated as 0.1 dB for the straight connector.

Mechanical Specifications

Cable Assembly

Weight 0.094 lbs [42.64 g]

Cable

Cable Type PE-SR402AL
 Impedance 50 Ohms
 Inner Conductor Type Solid
 Inner Conductor Material and Plating Copper Clad Steel, Silver
 Dielectric Type PTFE
 Outer Conductor Material and Plating Tinned Aluminum
 Repeated Minimum Bend Radius 0.15 in [3.81 mm]

Click the following link (or enter part number in "SEARCH" on website) to obtain additional part information including price, inventory and certifications: [N Female to SMA Male Cable Using PE-SR402AL Coax PE3C6462](#)



N Female to SMA Male Cable Using PE-SR402AL Coax

RF Cable Assemblies Technical Data Sheet

PE3C6462

Connectors

Description	Connector 1	Connector 2
Type	N Female	SMA Male
Specification		MIL-STD-348A
Impedance	50 Ohms	50 Ohms
Contact Material and Plating	Phosphor Bronze, Gold over Nickel	Brass, Gold
Contact Plating Specification		50 µin minimum
Dielectric Type	PTFE	PTFE
Body Material and Plating	Brass, Nickel	Stainless Steel, Gold
Body Plating Specification		10 µin minimum
Coupling Nut Material and Plating		Brass, Nickel
Coupling Nut Plating Specification		100 µin minimum
Hex Size		5/16 inch
Torque		3 in-lbs [0.34 Nm]

Compliance Certifications (see [product page](#) for current document)

Plotted and Other Data

Notes:

Click the following link (or enter part number in "SEARCH" on website) to obtain additional part information including price, inventory and certifications: [N Female to SMA Male Cable Using PE-SR402AL Coax PE3C6462](#)



N Female to SMA Male Cable Using PE-SR402AL Coax

RF Cable Assemblies Technical Data Sheet

PE3C6462

How to Order

Part Number Configuration:

PE3C6462

- **xx**

uu

Unit of Measure:
cm = Centimeters
<blank> = Inches
Length
Base Number

Example: PE3C6462-12 = 12 inches long cable
PE3C6462-100cm = 100 cm long cable

N Female to SMA Male Cable Using PE-SR402AL Coax from Pasternack Enterprises has same day shipment for domestic and International orders. Our RF, microwave and millimeter wave products maintain a 99.4% availability and are part of the broadest selection in the industry.

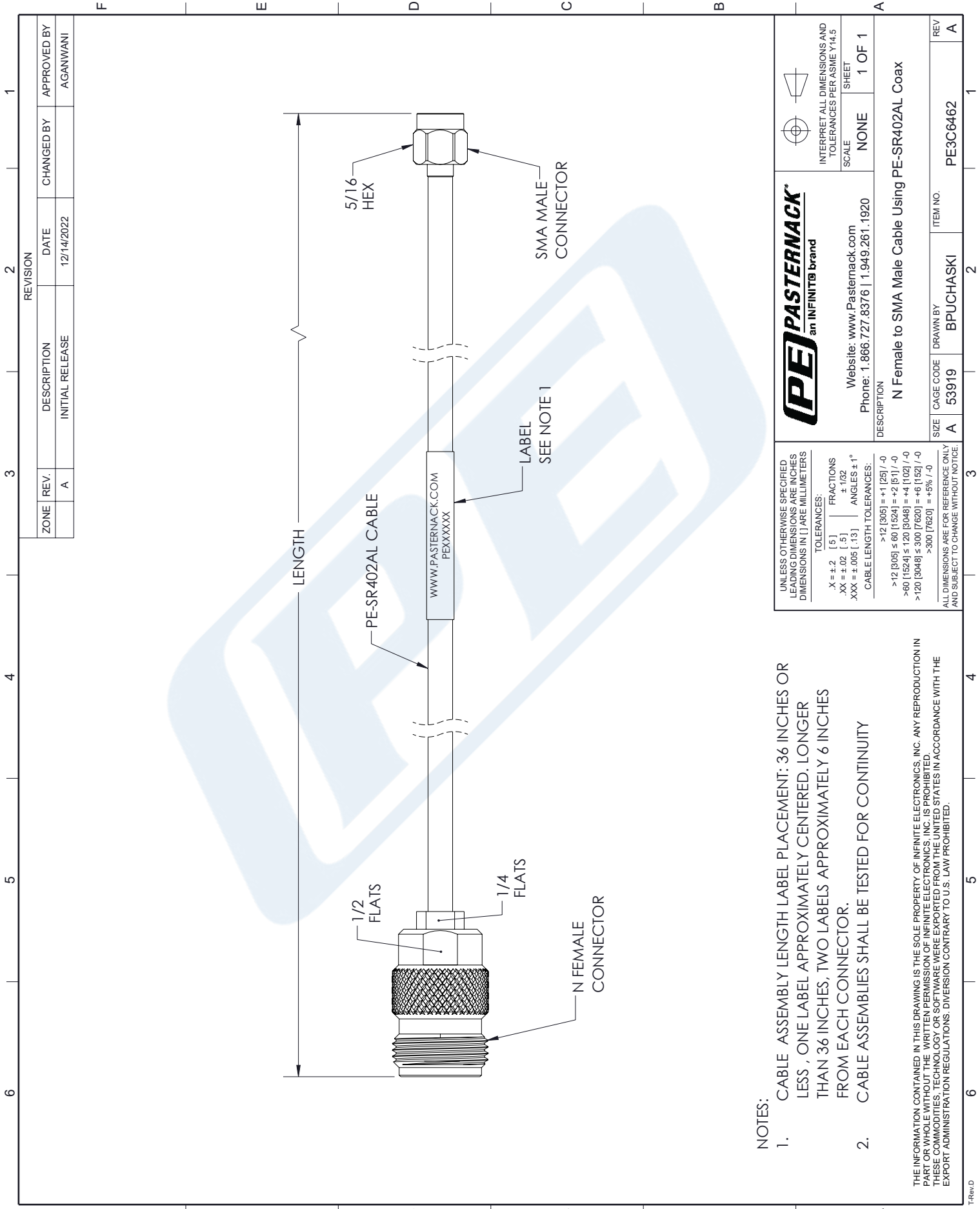
Click the following link (or enter part number in "SEARCH" on website) to obtain additional part information including price, inventory and certifications: [N Female to SMA Male Cable Using PE-SR402AL Coax PE3C6462](#)

URL: <https://www.pasternack.com/n-female-to-sma-male-cable-using-pe-sr402al-pe3c6462-p.aspx>

The information contained in this document is accurate to the best of our knowledge and representative of the part described herein. It may be necessary to make modifications to the part and/or the documentation of the part, in order to implement improvements. Pasternack reserves the right to make such changes as required. Unless otherwise stated, all specifications are nominal. Pasternack does not make any representation or warranty regarding the suitability of the part described herein for any particular purpose, and Pasternack does not assume any liability arising out of the use of any part or documentation.

PE3C6462 CAD Drawing

N Female to SMA Male Cable Using PE-SR402AL Coax



NOTES:

1. CABLE ASSEMBLY LENGTH LABEL PLACEMENT: 36 INCHES OR LESS , ONE LABEL APPROXIMATELY CENTERED. LONGER THAN 36 INCHES, TWO LABELS APPROXIMATELY 6 INCHES FROM EACH CONNECTOR.
2. CABLE ASSEMBLIES SHALL BE TESTED FOR CONTINUITY

THE INFORMATION CONTAINED IN THIS DRAWING IS THE SOLE PROPERTY OF INFINITE ELECTRONICS, INC. ANY REPRODUCTION IN PART OR WHOLE WITHOUT THE WRITTEN PERMISSION OF INFINITE ELECTRONICS, INC. IS PROHIBITED. THESE COMMODITIES, TECHNOLOGY OR SOFTWARE WERE EXPORTED FROM THE UNITED STATES IN ACCORDANCE WITH THE EXPORT ADMINISTRATION REGULATIONS. DIVERSION CONTRARY TO U.S. LAW PROHIBITED.

UNLESS OTHERWISE SPECIFIED LEADING DIMENSIONS ARE INCHES DIMENSIONS IN [] ARE MILLIMETERS	
X = ±.2 [.5]	FRACTIONS ± 1/32
.XX = ±.02 [.5]	ANGLES ± 1°
XXX = ±.005 [.13]	CABLE LENGTH TOLERANCES:
	>12 [305] = +1 [25] / -0
	>60 [1524] = +2 [51] / -0
	>120 [3048] = +4 [102] / -0
	>300 [7620] = +6 [152] / -0
	>500 [12700] = +5% / -0
ALL DIMENSIONS ARE FOR REFERENCE ONLY AND SUBJECT TO CHANGE WITHOUT NOTICE.	

Website: www.Pasternack.com
Phone: 1.866.727.8376 | 1.949.261.1920

INTERPRET ALL DIMENSIONS AND TOLERANCES PER ASME Y14.5

SCALE: NONE

SHEET: 1 OF 1

DESCRIPTION	
N Female to SMA Male Cable Using PE-SR402AL Coax	
SIZE	ITEM NO.
A 53919	BPUCHASKI
DRAWN BY	
BPUCHASKI	
ITEM NO.	
PE3C6462	
REV	A