



## N Female to Push-On SMP Female Cable Using PE-SR405FL Coax

### RF Cable Assemblies Technical Data Sheet

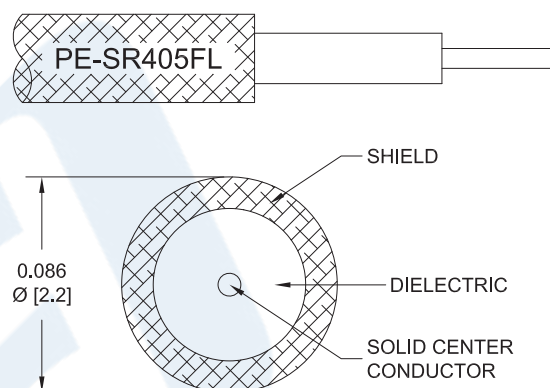
**PE3C6766**

#### Configuration

- Connector 1: N Female
- Connector 2: Push-OnSMP Female
- Cable Type: PE-SR405FL

#### Features

- Max Frequency 8 GHz
- 69.5% Phase Velocity



#### Applications

- General Purpose
- Laboratory Use

#### Description

Pasternack's PE3C6766 type N female to SMP female push-on cable using PE-SR405FL coax is part of our full line of RF components available for same-day shipping. Pasternack's formable RF cable assemblies provide an alternative to costly pre-formed semi-rigid assemblies since they are hand formable. This Pasternack type N to SMP cable assembly has a female to female gender configuration with 50 ohm formable PE-SR405FL coax. The PE3C6766 type N female to SMP female cable assembly operates to 8 GHz.

Custom versions of most RF cable assemblies can be built and shipped same day. Custom cable assembly lengths can be obtained by specifying the desired length on the web site at time of order or by contacting a sales representative. Other available RF cable assembly value added services include connector orientation or clocking, heat shrink booting and custom labeling. RF testing can also be performed to document the electrical performance of your cable assembly.

Click the following link (or enter part number in "SEARCH" on website) to obtain additional part information including price, inventory and certifications: [N Female to Push-On SMP Female Cable Using PE-SR405FL Coax PE3C6766](#)



## N Female to Push-On SMP Female Cable Using PE-SR405FL Coax

### RF Cable Assemblies Technical Data Sheet

**PE3C6766**

#### Electrical Specifications

Description	Minimum	Typical	Maximum	Units
Frequency Range	DC		8	GHz
VSWR			1.4:1	
Velocity of Propagation		69.5		%
Capacitance		29 [95.14]		pF/ft [pF/m]
DC Resistance Inner Conductor		65.7 [215.55]		Ω/1000ft [Ω/Km]
DC Resistance Outer Conductor		10.2 [33.46]		Ω/1000ft [Ω/Km]

#### Specifications by Frequency

Description	F1	F2	F3	F4	F5	Units
Frequency	0.5	1	2	4	8	GHz
Insertion Loss (Typ.)	0.15	0.22	0.3	0.46	0.7	dB/ft
	0.49	0.72	0.98	1.51	2.3	dB/m

#### Electrical Specification Notes:

Insertion Loss does not include the loss of the connectors. Insertion Loss is estimated as 0.1 dB per connector.

#### Mechanical Specifications

##### Cable Assembly

Weight 0.082 lbs [37.19 g]

##### Cable

Cable Type PE-SR405FL  
Impedance 50 Ohms  
Inner Conductor Type Solid  
Inner Conductor Material and Plating Copper Clad Steel, Silver  
Dielectric Type PTFE  
Number of Shields 1  
Outer Conductor Material and Plating Copper, Tin

Repeated Minimum Bend Radius 0.78 in [19.81 mm]

Click the following link (or enter part number in "SEARCH" on website) to obtain additional part information including price, inventory and certifications: [N Female to Push-On SMP Female Cable Using PE-SR405FL Coax PE3C6766](#)



## N Female to Push-On SMP Female Cable Using PE-SR405FL Coax

### RF Cable Assemblies Technical Data Sheet

**PE3C6766**

#### Connectors

Description	Connector 1	Connector 2
Type	N Female	SMP Female
Specification		MIL-STD-348A
Impedance	50 Ohms	50 Ohms
Connection Method		Push-On
Contact Material and Plating	Phosphor Bronze, Gold	Beryllium Copper, Gold
Contact Plating Specification		MIL-DTL-45204
Dielectric Type	PTFE	PTFE
Outer Conductor Material and Plating		Beryllium Copper, Gold
Outer Conductor Plating Specification		MIL-DTL-45204
Body Material and Plating	Brass, Nickel	Beryllium Copper, Gold
Body Plating Specification		MIL-DTL-45204

**Compliance Certifications** (see [product page](#) for current document)

#### Plotted and Other Data

Notes:

Click the following link (or enter part number in "SEARCH" on website) to obtain additional part information including price, inventory and certifications: [N Female to Push-On SMP Female Cable Using PE-SR405FL Coax PE3C6766](#)



## N Female to Push-On SMP Female Cable Using PE-SR405FL Coax

### RF Cable Assemblies Technical Data Sheet

**PE3C6766**

#### How to Order

Part Number Configuration:

**PE3C6766**

- **xx**

**uu**

Unit of Measure:  
cm = Centimeters  
<blank> = Inches  
Length  
Base Number

Example: PE3C6766-12 = 12 inches long cable  
PE3C6766-100cm = 100 cm long cable

N Female to Push-On SMP Female Cable Using PE-SR405FL Coax from Pasternack Enterprises has same day shipment for domestic and International orders. Our RF, microwave and millimeter wave products maintain a 99.4% availability and are part of the broadest selection in the industry.

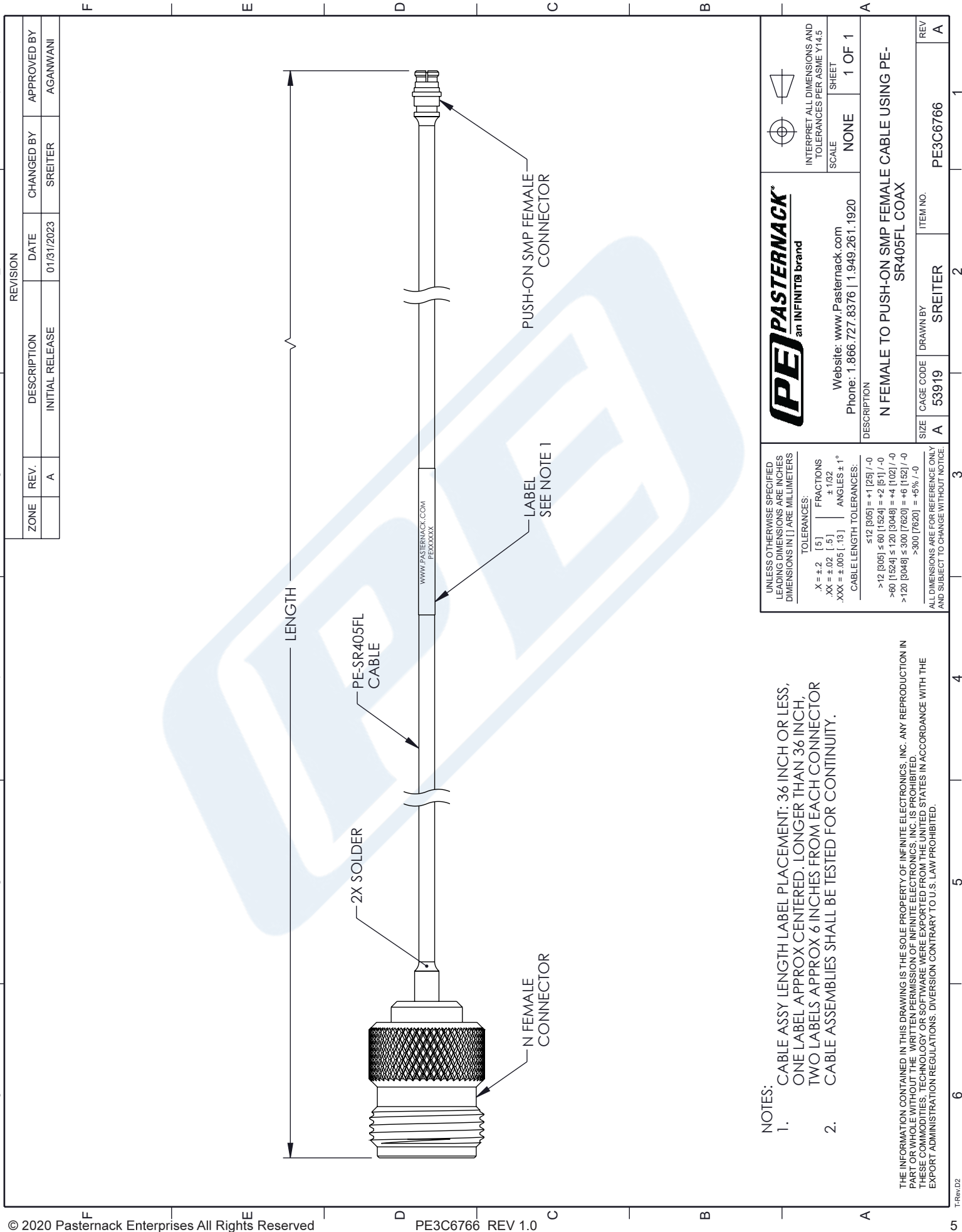
Click the following link (or enter part number in "SEARCH" on website) to obtain additional part information including price, inventory and certifications: [N Female to Push-On SMP Female Cable Using PE-SR405FL Coax PE3C6766](#)

URL: <https://www.pasternack.com/n-female-to-push-on-smp-female-cable-using-pe-sr405fl-pe3c6766-p.aspx>

The information contained in this document is accurate to the best of our knowledge and representative of the part described herein. It may be necessary to make modifications to the part and/or the documentation of the part, in order to implement improvements. Pasternack reserves the right to make such changes as required. Unless otherwise stated, all specifications are nominal. Pasternack does not make any representation or warranty regarding the suitability of the part described herein for any particular purpose, and Pasternack does not assume any liability arising out of the use of any part or documentation.

# PE3C6766 CAD Drawing

N Female to Push-On SMP Female Cable Using PE-SR405FL Coax



## NOTES:

- CABLE ASSY LENGTH LABEL PLACEMENT: 36 INCH OR LESS, ONE LABEL APPROX CENTERED. LONGER THAN 36 INCH, TWO LABELS APPROX 6 INCHES FROM EACH CONNECTOR. CABLE ASSEMBLIES SHALL BE TESTED FOR CONTINUITY.

THE INFORMATION CONTAINED IN THIS DRAWING IS THE SOLE PROPERTY OF INFINITE ELECTRONICS, INC. ANY REPRODUCTION IN PART OR WHOLE WITHOUT THE WRITTEN PERMISSION OF INFINITE ELECTRONICS, INC. IS PROHIBITED. THESE COMMODITIES, TECHNOLOGY OR SOFTWARE WERE EXPORTED FROM THE UNITED STATES IN ACCORDANCE WITH THE EXPORT ADMINISTRATION REGULATIONS. DIVERSION CONTRARY TO U.S. LAW PROHIBITED.

<b>PASTERNAK</b> an INFINITO brand		 INTERPRET ALL DIMENSIONS AND TOLERANCES PER ASME Y14.5 SCALE: NONE SHEET: 1 OF 1	
Website: <a href="http://www.Pasternack.com">www.Pasternack.com</a> Phone: 1.866.727.8376   1.949.261.1920		DESCRIPTION: <b>N FEMALE TO PUSH-ON SMP FEMALE CABLE USING PE-SR405FL COAX</b>	
SIZE: A	CAGE CODE: 53919	DRAWN BY: SREITER	ITEM NO.: PE3C6766
UNLESS OTHERWISE SPECIFIED LEADING DIMENSIONS ARE INCHES DIMENSIONS IN [ ] ARE MILLIMETERS TOLERANCES: X = ±.2 [ .5 ] FRACTIONS .XX = ±.02 [ .5 ] ±.1/32 .XXX = ±.005 [ .13 ] ANGLES ± 1° CABLE LENGTH TOLERANCES: ≤12 [305] = +1 [25] / -0 >12 [305] ≤ 60 [1524] = +2 [51] / -0 >60 [1524] ≤ 120 [3048] = +4 [102] / -0 >120 [3048] ≤ 300 [7620] = +6 [152] / -0 >300 [7620] = +5% / -0 ALL DIMENSIONS ARE FOR REFERENCE ONLY AND SUBJECT TO CHANGE WITHOUT NOTICE.		REV: A	