



N Female 4 Hole Flange to SMA Male Cable Using RG405 Coax

RF Cable Assemblies Technical Data Sheet

PE3C8422

Configuration

- Connector 1: N Female 4 Hole Flange
- Connector 2: SMA Male
- Cable Type: RG405

Features

- Max Frequency 18 GHz
- Shielding Effectivity > -110 dB
- 69.5% Phase Velocity

Applications

- General Purpose
- Laboratory Use

Description

Pasternack's PE3C8422 type N female 4 hole flange to SMA male cable using RG405 coax is part of our full line of RF components available for same-day shipping. Pasternack's semi-rigid RF cable assemblies are ideal for high performance applications and can be formed, using proper tooling, to the routing pattern required. This Pasternack type N to SMA cable assembly has a female to male gender configuration with 50 ohm semi-rigid RG405 coax. The PE3C8422 type N female to SMA male cable assembly operates to 18 GHz. Our RF cable assembly with type N 4 hole flange interface allows designers to create external connections on their product enclosures, and can be used in a variety of other rack mount and panel mount applications.

Custom versions of most RF cable assemblies can be built and shipped same day. Custom cable assembly lengths can be obtained by specifying the desired length on the web site at time of order or by contacting a sales representative. Other available RF cable assembly value added services include connector orientation or clocking, heat shrink booting and custom labeling. RF testing can also be performed to document the electrical performance of your cable assembly.

Click the following link (or enter part number in "SEARCH" on website) to obtain additional part information including price, inventory and certifications: [N Female 4 Hole Flange to SMA Male Cable Using RG405 Coax PE3C8422](#)



N Female 4 Hole Flange to SMA Male Cable Using RG405 Coax

RF Cable Assemblies Technical Data Sheet

PE3C8422

Electrical Specifications

Description	Minimum	Typical	Maximum	Units
Frequency Range	DC		18	GHz
VSWR			1.4:1	
Velocity of Propagation		69.5		%
RF Shielding	-110			dB
Capacitance		29.4 [96.46]		pF/ft [pF/m]

Specifications by Frequency

Description	F1	F2	F3	F4	F5	Units
Frequency	1	2	4.5	9	18	GHz
Insertion Loss (Typ.)	0.22	0.284	0.445	0.735	1.12	dB
	0.72	0.93	1.46	2.41	3.67	

Electrical Specification Notes:

Insertion Loss does not include the loss of the connectors. Insertion Loss is estimated as $0.1 \cdot \sqrt{FGHz}$ dB per connector.

Mechanical Specifications

Cable Assembly

Length* 0 in [0 mm]
Weight 0.108 lbs [48.99 g]

Cable

Cable Type RG405
Impedance 50 Ohms
Inner Conductor Type Solid
Inner Conductor Material and Plating Copper Clad Steel, Silver
Dielectric Type PTFE
Number of Shields 1
Outer Conductor Material and Plating Copper

Repeated Minimum Bend Radius 0.05 in [1.27 mm]

Click the following link (or enter part number in "SEARCH" on website) to obtain additional part information including price, inventory and certifications: [N Female 4 Hole Flange to SMA Male Cable Using RG405 Coax PE3C8422](#)



N Female 4 Hole Flange to SMA Male Cable Using RG405 Coax

RF Cable Assemblies Technical Data Sheet

PE3C8422

Connectors

Description	Connector 1	Connector 2
Type	N Female 4 Hole Flange	SMA Male
Specification		MIL-STD-348A
Impedance	50 Ohms	50 Ohms
Mating Cycles		500
Contact Material and Plating		Brass, Gold
Contact Plating Specification		50 μin minimum
Dielectric Type		PTFE
Body Material and Plating	Brass, Nickel	Stainless Steel, Gold
Body Plating Specification		10 μin minimum
Coupling Nut Material and Plating		Brass, Nickel
Coupling Nut Plating Specification		100 μin minimum
Hex Size		5/16 inch
Torque		3 in-lbs [0.34 Nm]

Compliance Certifications (see [product page](#) for current document)

Plotted and Other Data

Notes:

Click the following link (or enter part number in "SEARCH" on website) to obtain additional part information including price, inventory and certifications: [N Female 4 Hole Flange to SMA Male Cable Using RG405 Coax PE3C8422](#)



N Female 4 Hole Flange to SMA Male Cable Using RG405 Coax

RF Cable Assemblies Technical Data Sheet

PE3C8422

How to Order

Part Number Configuration:

PE3C8422

- **xx**

uu

Unit of Measure:
cm = Centimeters
<blank> = Inches
Length
Base Number

Example: PE3C8422-12 = 12 inches long cable
PE3C8422-100cm = 100 cm long cable

N Female 4 Hole Flange to SMA Male Cable Using RG405 Coax from Pasternack Enterprises has same day shipment for domestic and International orders. Our RF, microwave and millimeter wave products maintain a 99.4% availability and are part of the broadest selection in the industry.

Click the following link (or enter part number in "SEARCH" on website) to obtain additional part information including price, inventory and certifications: [N Female 4 Hole Flange to SMA Male Cable Using RG405 Coax PE3C8422](#)

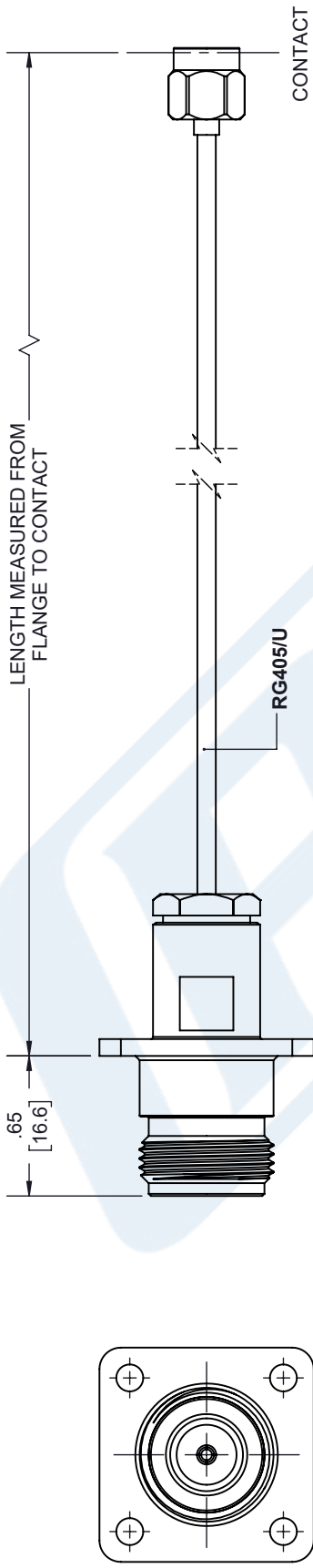
URL: <https://www.pasternack.com/A-female-4-hole-flange-to-sma-male-cable-using-rg405-pe3c8422-p.aspx>

The information contained in this document is accurate to the best of our knowledge and representative of the part described herein. It may be necessary to make modifications to the part and/or the documentation of the part, in order to implement improvements. Pasternack reserves the right to make such changes as required. Unless otherwise stated, all specifications are nominal. Pasternack does not make any representation or warranty regarding the suitability of the part described herein for any particular purpose, and Pasternack does not assume any liability arising out of the use of any part or documentation.

PE3C8422 CAD Drawing

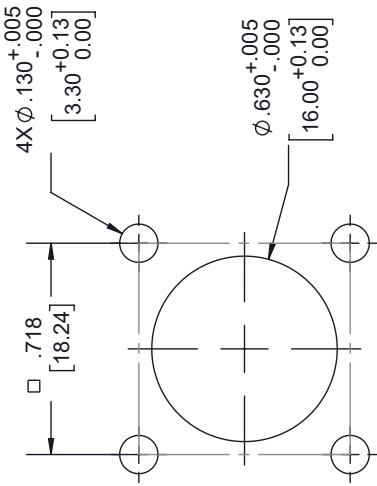
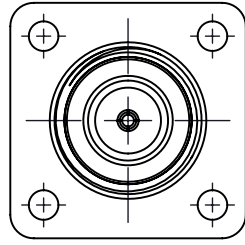
N Female 4 Hole Flange to SMA Male Cable Using RG405 Coax

REVISIONS		
REV.	DESCRIPTION	DATE
A	INITIAL RELEASE	11/10/2021
		APPROVED A. GANWANI



N FEMALE
4 HOLE FLANGE

SMA MALE



PATTERN
MOUNTING HOLE

UNLESS OTHERWISE SPECIFIED
LEADING DIMENSIONS ARE INCHES
DIMENSIONS IN [] ARE MILLIMETERS

TOLERANCES:
 .X = ±.2 [5.08] FRACTIONS ± 1/32
 .XX = ±.02 [.51] ANGLES ± 1°
 .XXX = ±.005 [.13]

CABLE LENGTH (L), TOLERANCES:
 L ≤ 12 [305] = +1 [25] / -0
 12 [305] < L ≤ 60 [1524] = +2 [51] / -0
 60 [1524] < L ≤ 120 [3048] = +4 [102] / -0
 120 [3048] < L ≤ 300 [7620] = +6 [152] / -0
 300 [7620] < L = +5% / -0

ALL DIMENSIONS SHOWN
ARE FOR REFERENCE ONLY.

PE PASTERNAK
an INFINITE brand

Pasternack Enterprises, Inc.
 P. O. Box 16759, Irvine, CA 92623.
 Phone: 1.949.261.1920 | 1.866.727.8376
 Fax: 1.949.261.7451
 Website: www.pasternack.com
 E-mail: sales@pasternack.com

SIZE [CAGE CODE] DRAWN BY ITEM NO.
 A 53919 K.DANG PE3C8422

THIRD-ANGLE PROJECTION

THE INFORMATION AND
DESIGN IN THIS DOCUMENT
IS THE PROPERTY OF
PASTERNAK CORPORATION
ALL RIGHTS RESERVED.

SHEET 1 OF 1

SCALE N/A

REV A