



## SHV Plug Right Angle to SHV Plug Right Angle Cable Using RG58 Coax

### RF Cable Assemblies Technical Data Sheet

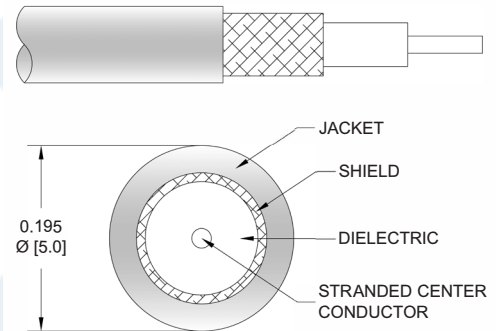
**PE3C9488**

#### Configuration

- Connector 1: SHV Plug Right Angle
- Connector 2: SHV Plug Right Angle
- Cable Type: RG58

#### Features

- Recessed contacts prevent shock hazards
- Max Frequency 300 MHz
- Shielding Effectivity > 45 dB
- 66% Phase Velocity
- PVC Jacket
- Dielectric withstanding of 5kV
- Shock, Moisture & Corrosion resistant



#### Applications

- General Purpose
- Laboratory Use
- Nuclear Instrumentation
- High Voltage Electrical Transmission
- Semiconductor Test

#### Description

Pasternack's PE3C9488 SHV plug right angle to SHV plug right angle cable using RG58 coax is part of our full line of RF components available for same-day shipping. Pasternack's flexible RF cable assemblies are ideal for applications such as nuclear instrumentation and semiconductor testing, where transmission of high voltage signals over coax is required. This Pasternack SHV to SHV cable assembly has a plug to plug gender configuration with 50 ohm flexible RG58 coax. The PE3C9488 SHV plug to SHV plug cable assembly operates to 300 MHz. The right angle SHV interfaces on the RG58 cable allow for easier connections in tight spaces. Safety High Voltage (SHV) connectors are designed to allow signal transmission with high voltage ratings without safety risk for the operators. Both the pin and socket contacts are securely recessed inside the insulation to guard against potential electrical shock when live unmated connectors are handled.

Custom versions of most RF cable assemblies can be built and shipped same day. Custom cable assembly lengths can be obtained by specifying the desired length on the web site at time of order or by contacting a sales representative. Other available RF cable assembly value added services include connector orientation or clocking, heat shrink booting and custom labeling. RF testing can also be performed to document the electrical performance of your cable assembly.

Click the following link (or enter part number in "SEARCH" on website) to obtain additional part information including price, inventory and certifications: [SHV Plug Right Angle to SHV Plug Right Angle Cable Using RG58 Coax PE3C9488](#)



SHV Plug Right Angle to SHV Plug  
Right Angle Cable Using RG58 Coax

## RF Cable Assemblies Technical Data Sheet

**PE3C9488**

### Electrical Specifications

Description	Minimum	Typical	Maximum	Units
Frequency Range	DC		300	MHz
Velocity of Propagation		65.9		%
Capacitance		30.8 [101.05]		pF/ft [pF/m]
Operating Voltage (AC)			1,900	Vrms

### Specifications by Frequency

Description	F1	F2	F3	F4	F5	Units
Frequency	50	100	250	300		MHz
Insertion Loss (Typ.)	0.029	0.049	0.074	0.082		dB/ft
	0.1	0.16	0.24	0.27		dB/m

#### Electrical Specification Notes:

Insertion Loss does not include the loss of the connectors. Insertion Loss is estimated as 0.2 dB per connector.

### Mechanical Specifications

#### Cable Assembly

Weight 0.126 lbs [57.15 g]

#### Cable

Cable Type RG58  
 Impedance 50 Ohms  
 Inner Conductor Type Stranded  
 Inner Conductor Material and Plating Copper, Tin  
 Dielectric Type PE  
 Number of Shields 1  
 Shield Layer 1 Tinned Copper Braid  
 Jacket Material PVC (NC), Black  
 Jacket Diameter 0.195 in [4.95 mm]

One Time Minimum Bend Radius 0.98 in [24.89 mm]

Repeated Minimum Bend Radius 1.96 in [49.78 mm]

Click the following link (or enter part number in "SEARCH" on website) to obtain additional part information including price, inventory and certifications: [SHV Plug Right Angle to SHV Plug Right Angle Cable Using RG58 Coax PE3C9488](#)



SHV Plug Right Angle to SHV Plug  
Right Angle Cable Using RG58 Coax

## RF Cable Assemblies Technical Data Sheet

**PE3C9488**

### Connectors

Description	Connector 1	Connector 2
Type	SHV Plug Right Angle	SHV Plug Right Angle
Specification	MIL-STD-348B	MIL-STD-348B
Impedance	50 Ohms	50 Ohms
Contact Material and Plating	Brass, Gold over Nickel over copper	Brass, Gold over Nickel over copper
Dielectric Type	Teflon	Teflon
Body Material and Plating	Brass, Tinned Copper	Brass, Tinned Copper
Coupling Nut Material and Plating	Brass, Tinned Copper	Brass, Tinned Copper
Hex Size	16-Jul Inch	16-Jul Inch

### Environmental Specifications

#### Temperature

Operating Range

-40 to +80 deg C

**Compliance Certifications** (see [product page](#) for current document)

### Plotted and Other Data

Notes:

Click the following link (or enter part number in "SEARCH" on website) to obtain additional part information including price, inventory and certifications: [SHV Plug Right Angle to SHV Plug Right Angle Cable Using RG58 Coax PE3C9488](#)



## SHV Plug Right Angle to SHV Plug Right Angle Cable Using RG58 Coax

### RF Cable Assemblies Technical Data Sheet

**PE3C9488**

#### How to Order

Part Number Configuration:

**PE3C9488**

- **xx**

**uu**

Unit of Measure:  
cm = Centimeters  
<blank> = Inches  
Length  
Base Number

Example: PE3C9488-12 = 12 inches long cable  
PE3C9488-100cm = 100 cm long cable

SHV Plug Right Angle to SHV Plug Right Angle Cable Using RG58 Coax from Pasternack Enterprises has same day shipment for domestic and International orders. Our RF, microwave and millimeter wave products maintain a 99.4% availability and are part of the broadest selection in the industry.

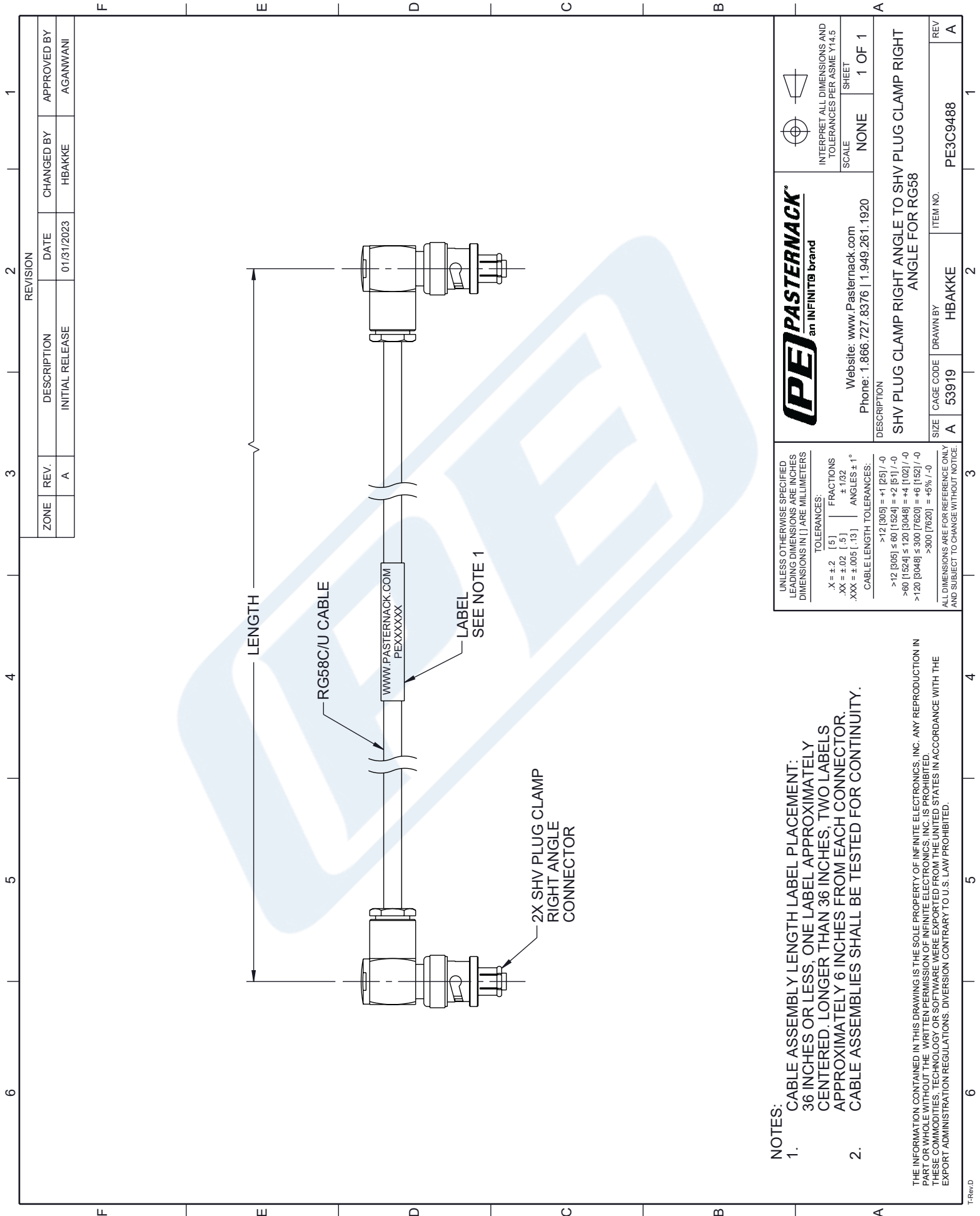
Click the following link (or enter part number in "SEARCH" on website) to obtain additional part information including price, inventory and certifications: [SHV Plug Right Angle to SHV Plug Right Angle Cable Using RG58 Coax PE3C9488](https://www.pasternack.com/shv-plug-right-angle-to-shv-plug-right-angle-cable-using-rg58-pe3c9488-p.aspx)

URL: <https://www.pasternack.com/shv-plug-right-angle-to-shv-plug-right-angle-cable-using-rg58-pe3c9488-p.aspx>

The information contained in this document is accurate to the best of our knowledge and representative of the part described herein. It may be necessary to make modifications to the part and/or the documentation of the part, in order to implement improvements. Pasternack reserves the right to make such changes as required. Unless otherwise stated, all specifications are nominal. Pasternack does not make any representation or warranty regarding the suitability of the part described herein for any particular purpose, and Pasternack does not assume any liability arising out of the use of any part or documentation.

# PE3C9488 CAD Drawing

SHV Plug Right Angle to SHV Plug Right Angle Cable Using RG58 Coax



REVISION		DATE	CHANGED BY	APPROVED BY
ZONE	REV.	DESCRIPTION	INITIAL RELEASE	
	A			AGANWANI

**PE PASTERNAK**  
an INFINITO brand

Website: [www.Pasternack.com](http://www.Pasternack.com)  
Phone: 1.866.727.8376 | 1.949.261.1920

DESCRIPTION  
**SHV PLUG CLAMP RIGHT ANGLE TO SHV PLUG CLAMP RIGHT ANGLE FOR RG58**

SCALE: NONE SHEET: 1 OF 1

INTERPRET ALL DIMENSIONS AND TOLERANCES PER ASME Y14.5

SIZE	CAGE CODE	DRAWN BY	ITEM NO.
A	53919	HBAKKE	PE3C9488

REV A

**NOTES:**

- CABLE ASSEMBLY LENGTH LABEL PLACEMENT: 36 INCHES OR LESS, ONE LABEL APPROXIMATELY CENTERED. LONGER THAN 36 INCHES, TWO LABELS APPROXIMATELY 6 INCHES FROM EACH CONNECTOR. CABLE ASSEMBLIES SHALL BE TESTED FOR CONTINUITY.
- THE INFORMATION CONTAINED IN THIS DRAWING IS THE SOLE PROPERTY OF INFINITE ELECTRONICS, INC. ANY REPRODUCTION IN PART OR WHOLE WITHOUT THE WRITTEN PERMISSION OF INFINITE ELECTRONICS, INC. IS PROHIBITED. THESE COMMODITIES, TECHNOLOGY OR SOFTWARE WERE EXPORTED FROM THE UNITED STATES IN ACCORDANCE WITH THE EXPORT ADMINISTRATION REGULATIONS. DIVERSION CONTRARY TO U.S. LAW PROHIBITED.