



# SMA Male to SMA Male Low Loss Cable Using TCOM-240 Coax with Times Microwave Components

## RF Cable Assemblies Technical Data Sheet

**PE3C9802**

### Configuration

- Connector 1: SMA Male
- Connector 2: SMA Male
- Cable Type: TCOM-240
- Coax Flex Type: Flexible

### Features

- Max Frequency 6 GHz
- Double Shielded
- PE Jacket
- 500 Mating Cycles

### Applications

- General Purpose
- Laboratory Use

### Description

Pasternack's PE3C9802 SMA male to SMA male cable using TCOM-240 coax is part of our full line of RF components available for same-day shipping. Pasternack's flexible RF cable assemblies are ideal for applications where tight bends and flexure are required. This Pasternack SMA to SMA cable assembly has a male to male gender configuration with 50 ohm flexible TCOM-240 coax. The PE3C9802 SMA male to SMA male cable assembly operates to 6 GHz. The double shielding of this Pasternack cable assembly provides excellent shielding effectiveness.

Custom versions of most RF cable assemblies can be built and shipped same day. Custom cable assembly lengths can be obtained by specifying the desired length on the web site at time of order or by contacting a sales representative. Other available RF cable assembly value added services include connector orientation or clocking, heat shrink booting and custom labeling. RF testing can also be performed to document the electrical performance of your cable assembly.

### Electrical Specifications

Description	Minimum	Typical	Maximum	Units
Frequency Range	DC		6	GHz
VSWR			1.4:1	

### Specifications by Frequency

Description	F1	F2	F3	F4	F5	Units
Frequency	0.25	0.5	1	2.5	6	GHz
Insertion Loss (Typ.)	0.036	0.052	0.075	0.123	0.197	dB/ft
	0.12	0.17	0.25	0.4	0.65	dB/m

### Electrical Specification Notes:

Click the following link (or enter part number in "SEARCH" on website) to obtain additional part information including price, inventory and certifications: [SMA Male to SMA Male Low Loss Cable Using TCOM-240 Coax with Times Microwave Components PE3C9802](#)



# SMA Male to SMA Male Low Loss Cable Using TCOM-240 Coax with Times Microwave Components

## RF Cable Assemblies Technical Data Sheet

**PE3C9802**

Insertion Loss does not include the loss of the connectors. Insertion Loss is estimated as 0.25 dB per connector.

### Mechanical Specifications

#### Cable Assembly

Weight 0.07 lbs [31.75 g]

#### Cable

Cable Type TCOM-240  
 Impedance 50 Ohms  
 Inner Conductor Type Solid  
 Inner Conductor Material and Plating Copper  
 Dielectric Type PE (F)  
 Number of Shields 2  
 Shield Layer 1 Silver Plated Copper Braid  
 Shield Layer 2 Tinned Copper Braid  
 Jacket Material PE, Black  
 Jacket Diameter 0.24 in [6.1 mm]

### Connectors

Description	Connector 1	Connector 2
Type	SMA Male Threaded	SMA Male Threaded
Specification	MIL-STD-348	MIL-STD-348
Impedance	50 Ohms	50 Ohms
Mating Cycles	500	500
Contact Material and Plating	Beryllium Copper, Gold	Beryllium Copper, Gold
Contact Plating Specification	ASTM B488	ASTM B488
Dielectric Type	PTFE	PTFE
Outer Conductor Material and Plating	Brass, Tri-Metal	Brass, Tri-Metal
Body Material and Plating	Brass, Tri-Metal	Brass, Tri-Metal
Coupling Nut Material and Plating	Brass, Tri-Metal	Brass, Tri-Metal

**Compliance Certifications** (see [product page](#) for current document)

### Plotted and Other Data

Notes:

Click the following link (or enter part number in "SEARCH" on website) to obtain additional part information including price, inventory and certifications: [SMA Male to SMA Male Low Loss Cable Using TCOM-240 Coax with Times Microwave Components PE3C9802](#)



## SMA Male to SMA Male Low Loss Cable Using TCOM-240 Coax with Times Microwave Components

### RF Cable Assemblies Technical Data Sheet

**PE3C9802**

#### How to Order

Part Number Configuration:

**PE3C9802**

- **xx**

**uu**

Unit of Measure:

cm = Centimeters

<blank> = Inches

Length

Base Number

Example: PE3C9802-12 = 12 inches long cable  
PE3C9802-100cm = 100 cm long cable

SMA Male to SMA Male Low Loss Cable Using TCOM-240 Coax with Times Microwave Components from Pasternack Enterprises has same day shipment for domestic and International orders. Our RF, microwave and millimeter wave products maintain a 99.4% availability and are part of the broadest selection in the industry.

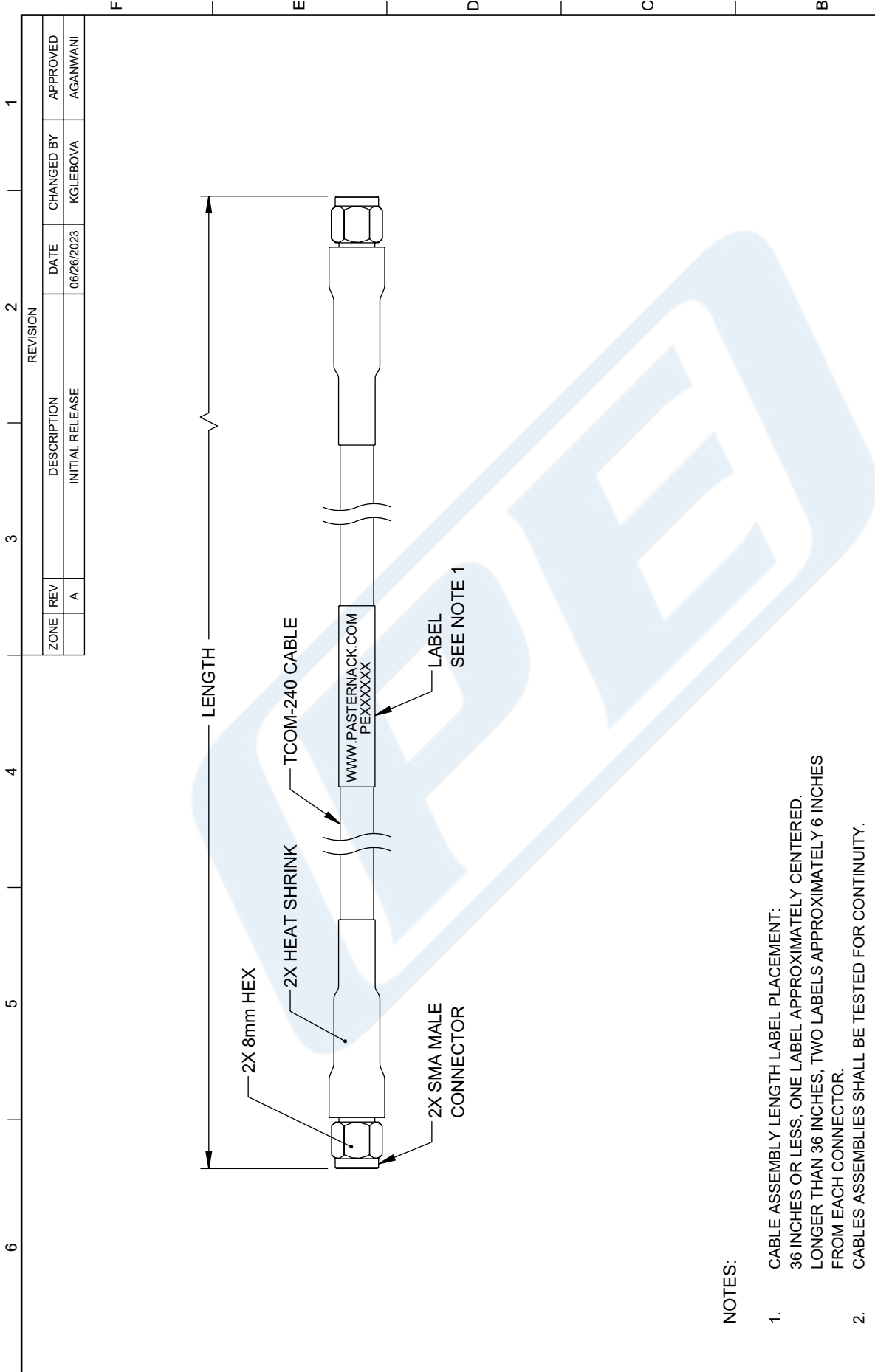
Click the following link (or enter part number in "SEARCH" on website) to obtain additional part information including price, inventory and certifications: [SMA Male to SMA Male Low Loss Cable Using TCOM-240 Coax with Times Microwave Components PE3C9802](#)

URL: <https://www.pasternack.com/sma-male-to-sma-male-low-loss-cable-using-tcom-240-pe3c9802-p.aspx>

The information contained in this document is accurate to the best of our knowledge and representative of the part described herein. It may be necessary to make modifications to the part and/or the documentation of the part, in order to implement improvements. Pasternack reserves the right to make such changes as required. Unless otherwise stated, all specifications are nominal. Pasternack does not make any representation or warranty regarding the suitability of the part described herein for any particular purpose, and Pasternack does not assume any liability arising out of the use of any part or documentation.

# PE3C9802 CAD Drawing

## SMA Male to SMA Male Low Loss Cable Using TCOM-240 Coax with Times Microwave Components



**NOTES:**

1. CABLE ASSEMBLY LENGTH LABEL PLACEMENT:  
36 INCHES OR LESS, ONE LABEL APPROXIMATELY CENTERED.  
LONGER THAN 36 INCHES, TWO LABELS APPROXIMATELY 6 INCHES FROM EACH CONNECTOR.
2. CABLE ASSEMBLIES SHALL BE TESTED FOR CONTINUITY.

<table border="1" style="width: 100%; border-collapse: collapse;"> <tr> <td style="width: 5%;">ZONE</td> <td style="width: 5%;">REV</td> <td style="width: 40%;">DESCRIPTION</td> <td style="width: 15%;">DATE</td> <td style="width: 15%;">CHANGED BY</td> <td style="width: 20%;">APPROVED</td> </tr> <tr> <td></td> <td>A</td> <td>INITIAL RELEASE</td> <td>06/26/2023</td> <td>KGLEBOVA</td> <td>AGANWANI</td> </tr> </table>	ZONE	REV	DESCRIPTION	DATE	CHANGED BY	APPROVED		A	INITIAL RELEASE	06/26/2023	KGLEBOVA	AGANWANI	<p style="text-align: center;"><b>PE PASTERNAK</b> an INFINITI® brand</p> <p style="text-align: center;">Website: <a href="http://www.Pasternack.com">www.Pasternack.com</a> Phone: 1.866.727.8376   1.949.261.1920</p> <p style="text-align: center;">DESCRIPTION <b>SMA MALE TO SMA MALE LOW LOSS CABLE USING TCOM-240 COAX WITH TIMES MICROWAVE COMPONENTS</b></p>	<p style="text-align: center;">INTERPRET ALL DIMENSIONS AND TOLERANCES PER ASME Y14.5</p> <table border="1" style="width: 100%; border-collapse: collapse;"> <tr> <td style="width: 50%;">SCALE</td> <td style="width: 50%;">SHEET</td> </tr> <tr> <td>NONE</td> <td>1 OF 1</td> </tr> </table>	SCALE	SHEET	NONE	1 OF 1												
ZONE	REV	DESCRIPTION	DATE	CHANGED BY	APPROVED																									
	A	INITIAL RELEASE	06/26/2023	KGLEBOVA	AGANWANI																									
SCALE	SHEET																													
NONE	1 OF 1																													
<p>UNLESS OTHERWISE SPECIFIED LEADING DIMENSIONS ARE IN INCHES DIMENSIONS IN [ ] ARE MILLIMETERS</p> <p><b>TOLERANCES:</b></p> <table border="1" style="width: 100%; border-collapse: collapse;"> <tr> <td style="width: 33%;">X = ±.2 [9]</td> <td style="width: 33%;">FRACTIONS ± 1/32</td> <td style="width: 33%;">ANGLES ± 1°</td> </tr> <tr> <td>XX = ±.02 [0.5]</td> <td></td> <td></td> </tr> <tr> <td>XXX = ±.005 [0.13]</td> <td></td> <td></td> </tr> </table> <p><b>CABLE LENGTH TOLERANCES:</b></p> <table border="1" style="width: 100%; border-collapse: collapse;"> <tr> <td style="width: 33%;">≤12 [305]</td> <td style="width: 33%;">≤60 [1524]</td> <td style="width: 33%;">≤120 [3048]</td> </tr> <tr> <td>≤12 [305] = +1 [25] / -0</td> <td>≤60 [1524] = +2 [51] / -0</td> <td>≤120 [3048] = +4 [102] / -0</td> </tr> <tr> <td>&gt;12 [305]</td> <td>&gt;60 [1524]</td> <td>&gt;120 [3048]</td> </tr> <tr> <td>≤300 [7620] = +5% / -0</td> <td>≤300 [7620] = +6 [152] / -0</td> <td>≤300 [7620] = +5% / -0</td> </tr> </table> <p>ALL DIMENSIONS ARE FOR REFERENCE ONLY AND SUBJECT TO CHANGE WITHOUT NOTICE. UNDIMENSIONED NON-CRITICAL FEATURES MAY VARY IN SIZE AND LOCATION. COLORS MAY VARY.</p>	X = ±.2 [9]	FRACTIONS ± 1/32	ANGLES ± 1°	XX = ±.02 [0.5]			XXX = ±.005 [0.13]			≤12 [305]	≤60 [1524]	≤120 [3048]	≤12 [305] = +1 [25] / -0	≤60 [1524] = +2 [51] / -0	≤120 [3048] = +4 [102] / -0	>12 [305]	>60 [1524]	>120 [3048]	≤300 [7620] = +5% / -0	≤300 [7620] = +6 [152] / -0	≤300 [7620] = +5% / -0	<table border="1" style="width: 100%; border-collapse: collapse;"> <tr> <td style="width: 25%;">SIZE</td> <td style="width: 25%;">CAGE CODE</td> <td style="width: 25%;">DRAWN BY</td> <td style="width: 25%;">ITEM NO.</td> </tr> <tr> <td>A</td> <td>53919</td> <td>KGLEBOVA</td> <td>PE3C9802</td> </tr> </table>	SIZE	CAGE CODE	DRAWN BY	ITEM NO.	A	53919	KGLEBOVA	PE3C9802
X = ±.2 [9]	FRACTIONS ± 1/32	ANGLES ± 1°																												
XX = ±.02 [0.5]																														
XXX = ±.005 [0.13]																														
≤12 [305]	≤60 [1524]	≤120 [3048]																												
≤12 [305] = +1 [25] / -0	≤60 [1524] = +2 [51] / -0	≤120 [3048] = +4 [102] / -0																												
>12 [305]	>60 [1524]	>120 [3048]																												
≤300 [7620] = +5% / -0	≤300 [7620] = +6 [152] / -0	≤300 [7620] = +5% / -0																												
SIZE	CAGE CODE	DRAWN BY	ITEM NO.																											
A	53919	KGLEBOVA	PE3C9802																											