



## N Female Bulkhead to SMA Male Low Loss Cable Using TCOM-240 Coax with Times Microwave Components

### RF Cable Assemblies Technical Data Sheet

**PE3C9830**

#### Configuration

- Connector 1: N Female Bulkhead
- Connector 2: SMA Male
- Cable Type: TCOM-240
- Coax Flex Type: Flexible

#### Features

- Max Frequency 6 GHz
- Double Shielded
- PE Jacket
- 500 Mating Cycles

#### Applications

- General Purpose
- Laboratory Use

#### Description

Pasternack's PE3C9830 type N female bulkhead to SMA male cable using TCOM-240 coax is part of our full line of RF components available for same-day shipping. Pasternack's flexible RF cable assemblies are ideal for applications where tight bends and flexure are required. This Pasternack type N to SMA cable assembly has a female to male gender configuration with 50 ohm flexible TCOM-240 coax. The PE3C9830 type N female to SMA male cable assembly operates to 6 GHz. Our RF cable assembly with type N bulkhead interface allows designers to create external connections on their product enclosures, and can be used in a variety of other rack mount and panel mount applications. The double shielding of this Pasternack cable assembly provides excellent shielding effectiveness.

Custom versions of most RF cable assemblies can be built and shipped same day. Custom cable assembly lengths can be obtained by specifying the desired length on the web site at time of order or by contacting a sales representative. Other available RF cable assembly value added services include connector orientation or clocking, heat shrink booting and custom labeling. RF testing can also be performed to document the electrical performance of your cable assembly.

Click the following link (or enter part number in "SEARCH" on website) to obtain additional part information including price, inventory and certifications: [N Female Bulkhead to SMA Male Low Loss Cable Using TCOM-240 Coax with Times Microwave Components PE3C9830](#)



N Female Bulkhead to SMA Male Low Loss Cable Using TCOM-240 Coax with Times Microwave Components

**RF Cable Assemblies Technical Data Sheet**

**PE3C9830**

**Electrical Specifications**

Description	Minimum	Typical	Maximum	Units
Frequency Range	DC		6	GHz
VSWR			1.4:1	

**Specifications by Frequency**

Description	F1	F2	F3	F4	F5	Units
Frequency	0.25	0.5	1	2.5	6	GHz
Insertion Loss (Typ.)	0.036	0.052	0.075	0.123	0.197	dB/ft
	0.12	0.17	0.25	0.4	0.65	dB/m

**Electrical Specification Notes:**

Insertion Loss does not include the loss of the connectors. Insertion Loss is estimated as 0.28 dB for the N female connector and 0.25 dB for the SMA male connector.

**Mechanical Specifications**

**Cable Assembly**

Weight 0.142 lbs [64.41 g]

**Cable**

Cable Type TCOM-240  
 Impedance 50 Ohms  
 Inner Conductor Type Solid  
 Inner Conductor Material and Plating Copper  
 Dielectric Type PE (F)  
 Number of Shields 2  
 Shield Layer 1 Silver Plated Copper Braid  
 Shield Layer 2 Tinned Copper Braid  
 Jacket Material PE, Black  
 Jacket Diameter 0.24 in [6.1 mm]

Click the following link (or enter part number in "SEARCH" on website) to obtain additional part information including price, inventory and certifications: [N Female Bulkhead to SMA Male Low Loss Cable Using TCOM-240 Coax with Times Microwave Components PE3C9830](#)



N Female Bulkhead to SMA Male Low Loss Cable Using TCOM-240 Coax with Times Microwave Components

**RF Cable Assemblies Technical Data Sheet**

**PE3C9830**

**Connectors**

Description	Connector 1	Connector 2
Type	N Female Bulkhead Threaded	SMA Male Threaded
Specification	MIL-STD-348	MIL-STD-348
Impedance	50 Ohms	50 Ohms
Mating Cycles	500	500
Contact Material and Plating	Beryllium Copper, Gold	Beryllium Copper, Gold
Contact Plating Specification	50 μinches	ASTM B488
Dielectric Type	PTFE	PTFE
Outer Conductor Material and Plating	Brass, Tri-Metal	Brass, Tri-Metal
Outer Conductor Plating Specification	80 μinches	
Body Material and Plating	Brass, Tri-Metal	Brass, Tri-Metal
Coupling Nut Material and Plating		Brass, Tri-Metal

**Compliance Certifications** (see [product page](#) for current document)

**Plotted and Other Data**

Notes:

Click the following link (or enter part number in "SEARCH" on website) to obtain additional part information including price, inventory and certifications: [N Female Bulkhead to SMA Male Low Loss Cable Using TCOM-240 Coax with Times Microwave Components PE3C9830](#)



## N Female Bulkhead to SMA Male Low Loss Cable Using TCOM-240 Coax with Times Microwave Components

### RF Cable Assemblies Technical Data Sheet

**PE3C9830**

#### How to Order

Part Number Configuration:

**PE3C9830**

- **xx**

**uu**

Unit of Measure:  
cm = Centimeters  
<blank> = Inches  
Length  
Base Number

Example: PE3C9830-12 = 12 inches long cable  
PE3C9830-100cm = 100 cm long cable

N Female Bulkhead to SMA Male Low Loss Cable Using TCOM-240 Coax with Times Microwave Components from Pasternack Enterprises has same day shipment for domestic and International orders. Our RF, microwave and millimeter wave products maintain a 99.4% availability and are part of the broadest selection in the industry.

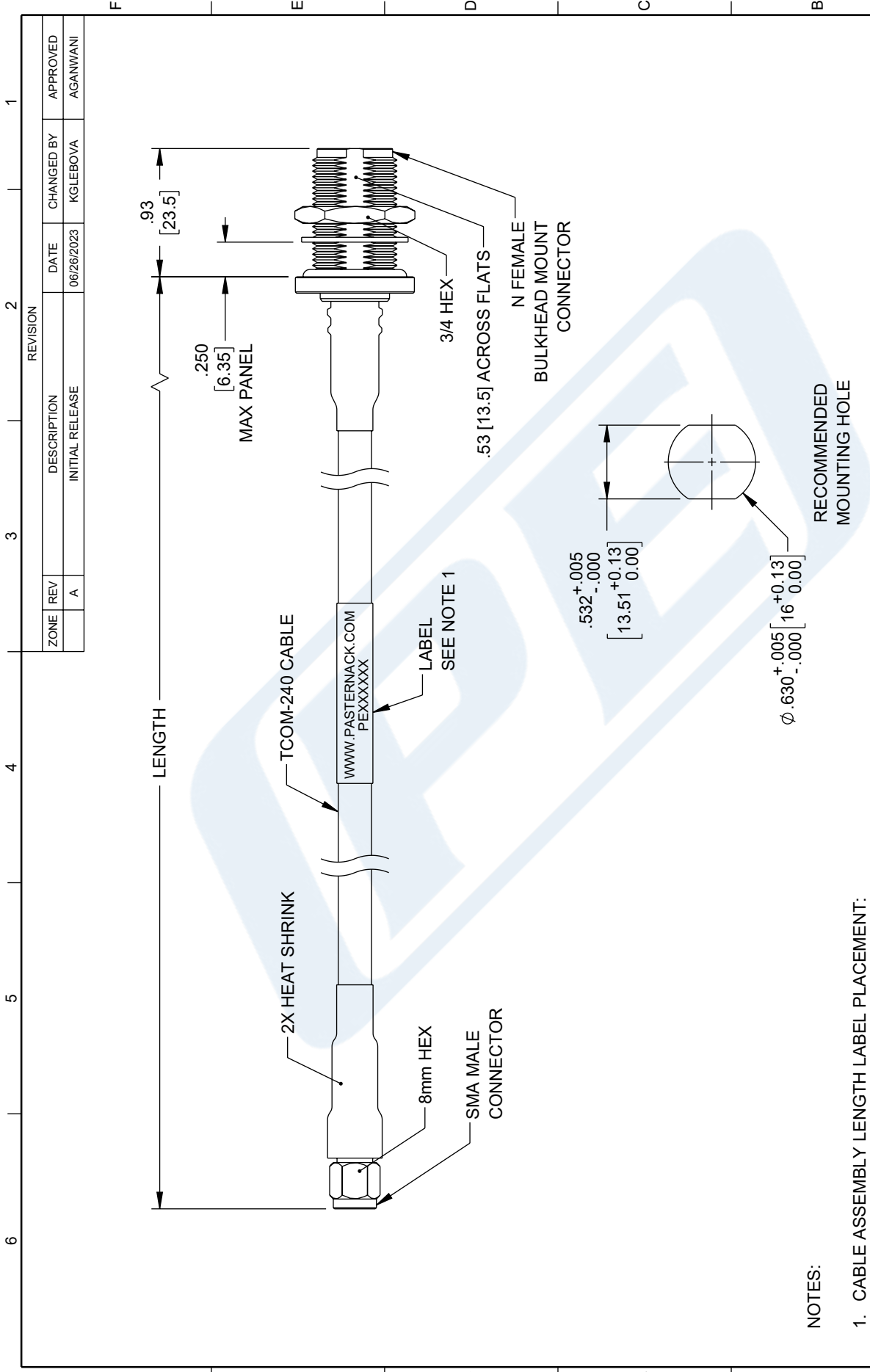
Click the following link (or enter part number in "SEARCH" on website) to obtain additional part information including price, inventory and certifications: [N Female Bulkhead to SMA Male Low Loss Cable Using TCOM-240 Coax with Times Microwave Components PE3C9830](https://www.pasternack.com/n-female-bulkhead-to-sma-male-low-loss-cable-using-tcom-240-pe3c9830-p.aspx)

URL: <https://www.pasternack.com/n-female-bulkhead-to-sma-male-low-loss-cable-using-tcom-240-pe3c9830-p.aspx>

The information contained in this document is accurate to the best of our knowledge and representative of the part described herein. It may be necessary to make modifications to the part and/or the documentation of the part, in order to implement improvements. Pasternack reserves the right to make such changes as required. Unless otherwise stated, all specifications are nominal. Pasternack does not make any representation or warranty regarding the suitability of the part described herein for any particular purpose, and Pasternack does not assume any liability arising out of the use of any part or documentation.

# PE3C9830 CAD Drawing

## N Female Bulkhead to SMA Male Low Loss Cable Using TCOM-240 Coax with Times Microwave Components



**NOTES:**

1. CABLE ASSEMBLY LENGTH LABEL PLACEMENT:  
36 INCHES OR LESS, ONE LABEL APPROXIMATELY CENTERED.  
LONGER THAN 36 INCHES, TWO LABELS APPROXIMATELY 6 INCHES FROM EACH CONNECTOR.
2. CABLES ASSEMBLIES SHALL BE TESTED FOR CONTINUITY.

<p>UNLESS OTHERWISE SPECIFIED LEADING DIMENSIONS ARE INCHES DIMENSIONS IN [ ] ARE MILLIMETERS</p> <p>TOLERANCES:</p> <p>.X = ±.2 [5]                  .XX = ±.02 [0.5]                  .XXX = ±.005 [0.13]</p> <p>FRACTIONS                  ± 1/32</p> <p>ANGLES ± 1°</p> <p>CABLE LENGTH TOLERANCES:</p> <p>≤12 [305] = +1 [25] / -0                  &gt;12 [305] ≤ 60 [1524] = +2 [51] / -0                  &gt;60 [1524] ≤ 120 [3048] = +4 [102] / -0                  &gt;120 [3048] ≤ 300 [7620] = +6 [152] / -0                  &gt;300 [7620] = +5% / -0</p> <p>ALL DIMENSIONS ARE FOR REFERENCE ONLY AND SUBJECT TO CHANGE WITHOUT NOTICE. UNDIMENSIONED NON-CRITICAL FEATURES MAY VARY IN SIZE AND LOCATION. COLORS MAY VARY.</p>	<p><b>PE PASTERNAK</b> an INFINITI® brand</p> <p>Website: <a href="http://www.Pastermack.com">www.Pastermack.com</a>                  Phone: 1.866.727.8376   1.949.261.1920</p> <p>DESCRIPTION                  SMA MALE TO N FEMALE BULKHEAD LOW LOSS CABLE USING TCOM-240 COAX WITH TIMES MICROWAVE COMPONENTS</p>	<p>INTERPRET ALL DIMENSIONS AND TOLERANCES PER ASME Y14.5</p> <p>SCALE NONE</p> <p>SHEET 1 OF 1</p>
<p>SIZE A 53919</p> <p>DRAWN BY KGLEBOVA</p> <p>ITEM NO. PE3C9830</p>		<p>REV A</p>