



## N Male to SMA Male Right Angle Low Loss Cable Using TCOM-240 Coax with Times Microwave Components

### RF Cable Assemblies Technical Data Sheet

**PE3C9831**

#### Configuration

- Connector 1: N Male
- Connector 2: SMA Male Right Angle
- Cable Type: TCOM-240
- Coax Flex Type: Flexible

#### Features

- Max Frequency 6 GHz
- Double Shielded
- PE Jacket
- 500 Mating Cycles

#### Applications

- General Purpose
- Laboratory Use

#### Description

Pasternack's PE3C9831 type N male to SMA male right angle cable using TCOM-240 coax is part of our full line of RF components available for same-day shipping. Pasternack's flexible RF cable assemblies are ideal for applications where tight bends and flexure are required. This Pasternack type N to SMA cable assembly has a male to male gender configuration with 50 ohm flexible TCOM-240 coax. The PE3C9831 type N male to SMA male cable assembly operates to 6 GHz. The right angle SMA interface on the TCOM-240 cable allows for easier connections in tight spaces. The double shielding of this Pasternack cable assembly provides excellent shielding effectiveness.

Custom versions of most RF cable assemblies can be built and shipped same day. Custom cable assembly lengths can be obtained by specifying the desired length on the web site at time of order or by contacting a sales representative. Other available RF cable assembly value added services include connector orientation or clocking, heat shrink booting and custom labeling. RF testing can also be performed to document the electrical performance of your cable assembly.

Click the following link (or enter part number in "SEARCH" on website) to obtain additional part information including price, inventory and certifications: [N Male to SMA Male Right Angle Low Loss Cable Using TCOM-240 Coax with Times Microwave Components PE3C9831](#)



N Male to SMA Male Right Angle Low Loss Cable Using TCOM-240 Coax with Times Microwave Components

**RF Cable Assemblies Technical Data Sheet**

**PE3C9831**

**Electrical Specifications**

Description	Minimum	Typical	Maximum	Units
Frequency Range	DC		6	GHz
VSWR			1.4:1	

**Specifications by Frequency**

Description	F1	F2	F3	F4	F5	Units
Frequency	0.25	0.5	1	2.5	6	GHz
Insertion Loss (Typ.)	0.036	0.052	0.075	0.123	0.197	dB/ft
	0.12	0.17	0.25	0.4	0.65	dB/m

**Electrical Specification Notes:**

Insertion Loss does not include the loss of the connectors. Insertion Loss is estimated as 0.25 dB for the SMA male right angle connector and 0.1\*SQRT(FGHz) dB for the N male connector

**Mechanical Specifications**

**Cable Assembly**

Weight 0.13 lbs [58.97 g]

**Cable**

Cable Type TCOM-240  
 Impedance 50 Ohms  
 Inner Conductor Type Solid  
 Inner Conductor Material and Plating Copper  
 Dielectric Type PE (F)  
 Number of Shields 2  
 Shield Layer 1 Silver Plated Copper Braid  
 Shield Layer 2 Tinned Copper Braid  
 Jacket Material PE, Black  
 Jacket Diameter 0.24 in [6.1 mm]

Click the following link (or enter part number in "SEARCH" on website) to obtain additional part information including price, inventory and certifications: [N Male to SMA Male Right Angle Low Loss Cable Using TCOM-240 Coax with Times Microwave Components PE3C9831](#)



N Male to SMA Male Right Angle Low Loss Cable Using TCOM-240 Coax with Times Microwave Components

**RF Cable Assemblies Technical Data Sheet**

**PE3C9831**

**Connectors**

Description	Connector 1	Connector 2
Type	N Male Threaded	SMA Male Right Angle Threaded
Specification	MIL-STD-348	MIL-STD-348
Impedance	50 Ohms	50 Ohms
Mating Cycles	500	500
Contact Material and Plating	Beryllium Copper, Gold	Brass/Phosphor Bronze, Gold
Contact Plating Specification	50 µin minimum	50 µin minimum
Dielectric Type	Teflon	Teflon
Body Material and Plating	Brass, Tri-Metal	Brass, Tri-Metal
Body Plating Specification	80 µin minimum	80 µin minimum
Coupling Nut Material and Plating	Brass, Tri-Metal	Brass, Tri-Metal
Coupling Nut Plating Specification	80 µin minimum	80 µin minimum

**Compliance Certifications** (see [product page](#) for current document)

**Plotted and Other Data**

Notes:

Click the following link (or enter part number in "SEARCH" on website) to obtain additional part information including price, inventory and certifications: [N Male to SMA Male Right Angle Low Loss Cable Using TCOM-240 Coax with Times Microwave Components PE3C9831](#)



## N Male to SMA Male Right Angle Low Loss Cable Using TCOM-240 Coax with Times Microwave Components

### RF Cable Assemblies Technical Data Sheet

**PE3C9831**

#### How to Order

Part Number Configuration:

**PE3C9831**

- **xx**

**uu**

Unit of Measure:

cm = Centimeters

<blank> = Inches

Length

Base Number

Example: PE3C9831-12 = 12 inches long cable  
PE3C9831-100cm = 100 cm long cable

N Male to SMA Male Right Angle Low Loss Cable Using TCOM-240 Coax with Times Microwave Components from Pasternack Enterprises has same day shipment for domestic and International orders. Our RF, microwave and millimeter wave products maintain a 99.4% availability and are part of the broadest selection in the industry.

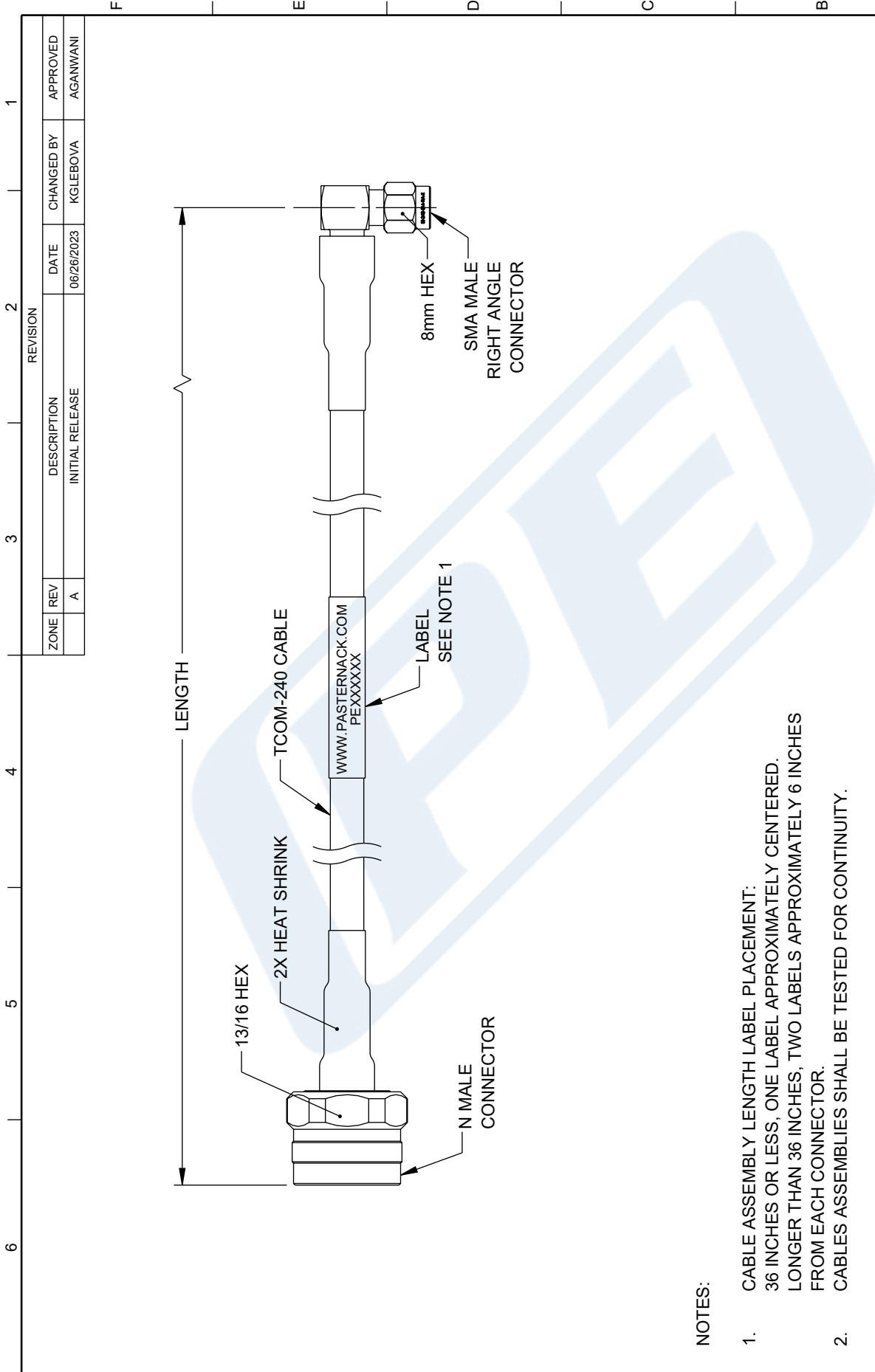
Click the following link (or enter part number in "SEARCH" on website) to obtain additional part information including price, inventory and certifications: [N Male to SMA Male Right Angle Low Loss Cable Using TCOM-240 Coax with Times Microwave Components PE3C9831](https://www.pasternack.com/n-male-to-sma-male-low-loss-cable-using-tcom-240-pe3c9831-p.aspx)

URL: <https://www.pasternack.com/n-male-to-sma-male-low-loss-cable-using-tcom-240-pe3c9831-p.aspx>

The information contained in this document is accurate to the best of our knowledge and representative of the part described herein. It may be necessary to make modifications to the part and/or the documentation of the part, in order to implement improvements. Pasternack reserves the right to make such changes as required. Unless otherwise stated, all specifications are nominal. Pasternack does not make any representation or warranty regarding the suitability of the part described herein for any particular purpose, and Pasternack does not assume any liability arising out of the use of any part or documentation.

# PE3C9831 CAD Drawing

## N Male to SMA Male Right Angle Low Loss Cable Using TCOM-240 Coax with Times Microwave Components



**NOTES:**

1. CABLE ASSEMBLY LENGTH LABEL PLACEMENT:  
36 INCHES OR LESS, ONE LABEL APPROXIMATELY CENTERED.  
LONGER THAN 36 INCHES, TWO LABELS APPROXIMATELY 6 INCHES  
FROM EACH CONNECTOR.
2. CABLES ASSEMBLIES SHALL BE TESTED FOR CONTINUITY.

<p><b>UNLESS OTHERWISE SPECIFIED LEADING DIMENSIONS ARE INCHES DIMENSIONS IN [ ] ARE MILLIMETERS</b></p> <p><b>TOLERANCES:</b></p> <table style="width: 100%; border-collapse: collapse;"> <tr> <td style="border-right: 1px solid black;">.X = ±.2 [9]</td> <td style="border-right: 1px solid black;">FRACTIONS ± 1/32</td> </tr> <tr> <td style="border-right: 1px solid black;">.XX = ±.02 [0.5]</td> <td style="border-right: 1px solid black;">ANGLES ± 1°</td> </tr> <tr> <td style="border-right: 1px solid black;">.XXX = ±.005 [0.13]</td> <td></td> </tr> </table> <p><b>CABLE LENGTH TOLERANCES:</b></p> <table style="width: 100%; border-collapse: collapse;"> <tr> <td style="border-right: 1px solid black;">≤12 [305]</td> <td>±.1 [25] / -0</td> </tr> <tr> <td style="border-right: 1px solid black;">&gt;12 [305] ≤ 60 [1524]</td> <td>±.2 [51] / -0</td> </tr> <tr> <td style="border-right: 1px solid black;">&gt;60 [1524] ≤ 120 [3048]</td> <td>±.4 [102] / -0</td> </tr> <tr> <td style="border-right: 1px solid black;">&gt;120 [3048] ≤ 300 [7620]</td> <td>±.6 [152] / -0</td> </tr> <tr> <td style="border-right: 1px solid black;">&gt;300 [7620]</td> <td>±.9% / -0</td> </tr> </table> <p><small>ALL DIMENSIONS ARE FOR REFERENCE ONLY AND SUBJECT TO CHANGE WITHOUT NOTICE. UNDIMENSIONED NON-CRITICAL FEATURES MAY VARY IN SIZE AND LOCATION. COLORS MAY VARY.</small></p>	.X = ±.2 [9]	FRACTIONS ± 1/32	.XX = ±.02 [0.5]	ANGLES ± 1°	.XXX = ±.005 [0.13]		≤12 [305]	±.1 [25] / -0	>12 [305] ≤ 60 [1524]	±.2 [51] / -0	>60 [1524] ≤ 120 [3048]	±.4 [102] / -0	>120 [3048] ≤ 300 [7620]	±.6 [152] / -0	>300 [7620]	±.9% / -0	<p style="text-align: center;"><b>PE PASTERNAK</b> an INFINITI® brand</p> <p style="text-align: center;">Website: <a href="http://www.Pasternack.com">www.Pasternack.com</a> Phone: 1.866.727.8376   1.949.261.1920</p>	<p style="text-align: center;">INTERPRET ALL DIMENSIONS AND TOLERANCES PER ASME Y14.5</p> <table style="width: 100%; border-collapse: collapse;"> <tr> <td style="border-right: 1px solid black;">SCALE</td> <td>NONE</td> </tr> <tr> <td style="border-right: 1px solid black;">SHEET</td> <td>1 OF 1</td> </tr> </table>	SCALE	NONE	SHEET	1 OF 1
.X = ±.2 [9]	FRACTIONS ± 1/32																					
.XX = ±.02 [0.5]	ANGLES ± 1°																					
.XXX = ±.005 [0.13]																						
≤12 [305]	±.1 [25] / -0																					
>12 [305] ≤ 60 [1524]	±.2 [51] / -0																					
>60 [1524] ≤ 120 [3048]	±.4 [102] / -0																					
>120 [3048] ≤ 300 [7620]	±.6 [152] / -0																					
>300 [7620]	±.9% / -0																					
SCALE	NONE																					
SHEET	1 OF 1																					
<p><b>DESCRIPTION</b></p> <p><b>N MALE TO SMA MALE RIGHT ANGLE LOW LOSS CABLE USING TCOM-240 COAX WITH TIMES MICROWAVE COMPONENTS</b></p>																						
<p><b>ZONE</b></p> <p>A</p>	<p><b>REV</b></p> <p>A</p>	<p><b>DATE</b></p> <p>06/26/2023</p>																				
<p><b>DESCRIPTION</b></p> <p>INITIAL RELEASE</p>																						
<p><b>CHANGED BY</b></p> <p>KGLEBOVA</p>																						
<p><b>APPROVED</b></p> <p>AGANWANI</p>																						
<p><b>SIZE</b></p> <p>A</p>	<p><b>CAGE CODE</b></p> <p>53919</p>	<p><b>ITEM NO.</b></p> <p>PE3C9831</p>																				
<p><b>DRAWN BY</b></p> <p>KGLEBOVA</p>																						
<p><b>REV</b></p> <p>A</p>																						