



N Male to Reverse Polarity SMA Plug Low Loss Cable Using TCOM-240 Coax with Times Microwave Components

RF Cable Assemblies Technical Data Sheet

PE3C9834

Configuration

- Connector 1: N Male
- Connector 2: SMA Plug Reverse Polarity
- Cable Type: TCOM-240
- Coax Flex Type: Flexible

Features

- Max Frequency 2.5 GHz
- Double Shielded
- PE Jacket
- 500 Mating Cycles

Applications

- General Purpose
- Laboratory Use

Description

Pasternack's PE3C9834 type N male to reverse polarity SMA plug cable using TCOM-240 coax is part of our full line of RF components available for same-day shipping. Pasternack's flexible RF cable assemblies are ideal for applications where tight bends and flexure are required. This Pasternack type N to reverse polarity SMA cable assembly has a male to plug gender configuration with 50 ohm flexible TCOM-240 coax. The PE3C9834 type N male to reverse polarity SMA plug cable assembly operates to 2.5 GHz. The double shielding of this Pasternack cable assembly provides excellent shielding effectiveness.

Custom versions of most RF cable assemblies can be built and shipped same day. Custom cable assembly lengths can be obtained by specifying the desired length on the web site at time of order or by contacting a sales representative. Other available RF cable assembly value added services include connector orientation or clocking, heat shrink booting and custom labeling. RF testing can also be performed to document the electrical performance of your cable assembly.

Electrical Specifications

Description	Minimum	Typical	Maximum	Units
Frequency Range	DC		2.5	GHz
VSWR			1.4:1	

Specifications by Frequency

Description	F1	F2	F3	F4	F5	Units
Frequency	0.25	0.5	1	2.5		GHz
Insertion Loss (Typ.)	0.036	0.052	0.075	0.123		dB/ft
	0.12	0.17	0.25	0.4		dB/m

Electrical Specification Notes:

Click the following link (or enter part number in "SEARCH" on website) to obtain additional part information including price, inventory and certifications: [N Male to Reverse Polarity SMA Plug Low Loss Cable Using TCOM-240 Coax with Times Microwave Components PE3C9834](#)



N Male to Reverse Polarity SMA Plug Low Loss Cable Using TCOM-240 Coax with Times Microwave Components

RF Cable Assemblies Technical Data Sheet

PE3C9834

Insertion Loss does not include the loss of the connectors. Insertion Loss is estimated as 0.1 dB for the reverse polarity SMA plug connector and $0.1 \cdot \sqrt{FGHz}$ dB for the N male connector.

Mechanical Specifications

Cable Assembly

Weight 0.209 lbs [94.8 g]

Cable

Cable Type TCOM-240
 Impedance 50 Ohms
 Inner Conductor Type Solid
 Inner Conductor Material and Plating Copper
 Dielectric Type PE (F)
 Number of Shields 2
 Shield Layer 1 Silver Plated Copper Braid
 Shield Layer 2 Tinned Copper Braid
 Jacket Material PE, Black
 Jacket Diameter 0.24 in [6.1 mm]

Connectors

Description	Connector 1	Connector 2
Type	N Male Threaded	SMA Plug Reverse Polarity Threaded
Specification	MIL-STD-348	MIL-STD-345
Impedance	50 Ohms	50 Ohms
Mating Cycles	500	500
Contact Material and Plating	Beryllium Copper, Gold	Beryllium copper, Gold
Contact Plating Specification	50 μ m minimum	
Dielectric Type	Teflon	
Body Material and Plating	Brass, Tri-Metal	Passivated Stainless Steel
Body Plating Specification	80 μ m minimum	
Coupling Nut Material and Plating	Brass, Tri-Metal	Passivated Stainless Steel
Coupling Nut Plating Specification	80 μ m minimum	

Compliance Certifications (see [product page](#) for current document)

Plotted and Other Data

Notes:

Click the following link (or enter part number in "SEARCH" on website) to obtain additional part information including price, inventory and certifications: [N Male to Reverse Polarity SMA Plug Low Loss Cable Using TCOM-240 Coax with Times Microwave Components PE3C9834](#)



N Male to Reverse Polarity SMA Plug Low Loss Cable Using TCOM-240 Coax with Times Microwave Components

RF Cable Assemblies Technical Data Sheet

PE3C9834

How to Order

Part Number Configuration:

PE3C9834

- **xx**

uu

Unit of Measure:
cm = Centimeters
<blank> = Inches
Length
Base Number

Example: PE3C9834-12 = 12 inches long cable
PE3C9834-100cm = 100 cm long cable

N Male to Reverse Polarity SMA Plug Low Loss Cable Using TCOM-240 Coax with Times Microwave Components from Pasternack Enterprises has same day shipment for domestic and International orders. Our RF, microwave and millimeter wave products maintain a 99.4% availability and are part of the broadest selection in the industry.

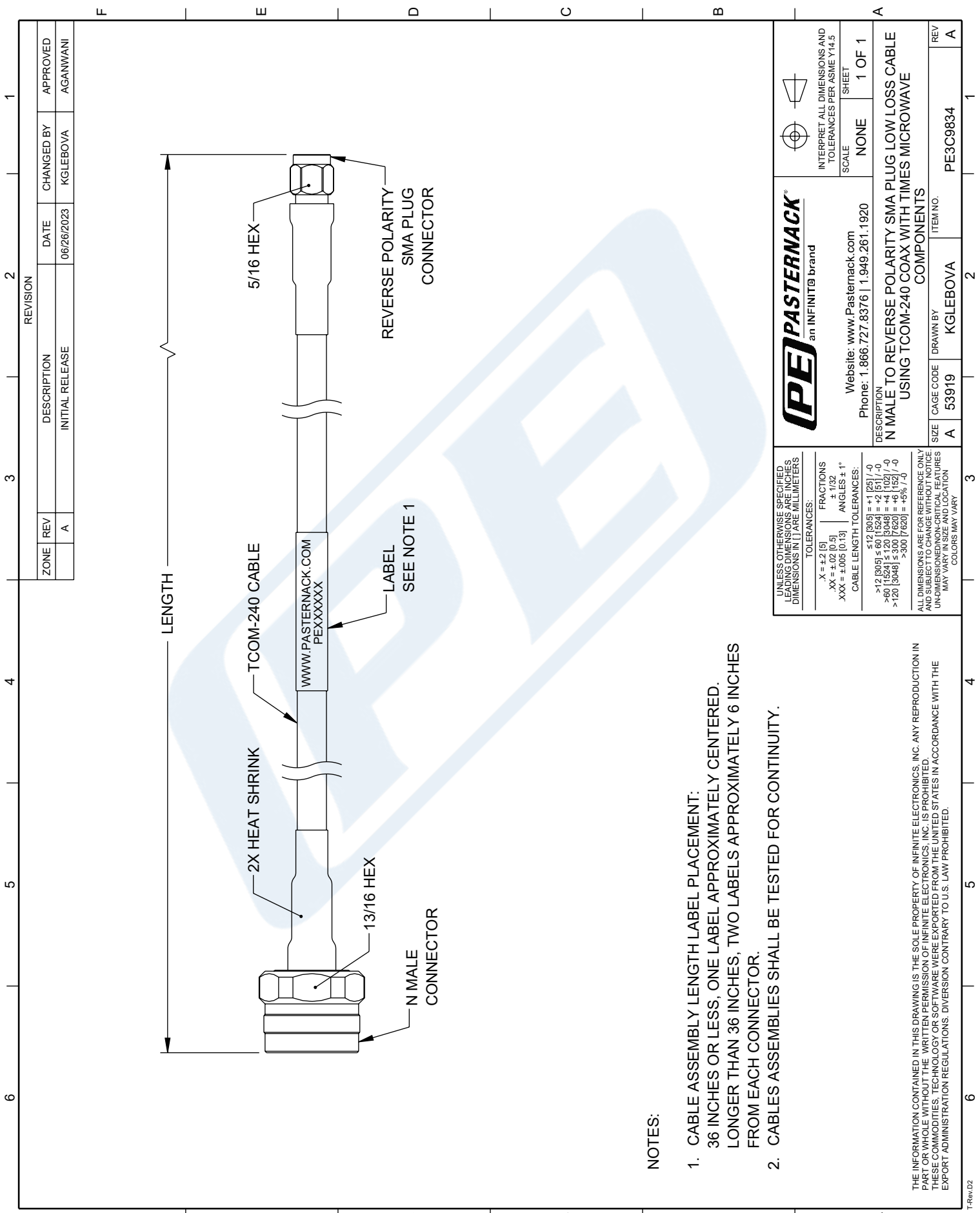
Click the following link (or enter part number in "SEARCH" on website) to obtain additional part information including price, inventory and certifications: [N Male to Reverse Polarity SMA Plug Low Loss Cable Using TCOM-240 Coax with Times Microwave Components PE3C9834](#)

URL: <https://www.pasternack.com/n-male-to-reverse-polarity-sma-plug-low-loss-cable-using-tcom-240-pe3c9834-p.aspx>

The information contained in this document is accurate to the best of our knowledge and representative of the part described herein. It may be necessary to make modifications to the part and/or the documentation of the part, in order to implement improvements. Pasternack reserves the right to make such changes as required. Unless otherwise stated, all specifications are nominal. Pasternack does not make any representation or warranty regarding the suitability of the part described herein for any particular purpose, and Pasternack does not assume any liability arising out of the use of any part or documentation.

PE3C9834 CAD Drawing

N Male to Reverse Polarity SMA Plug Low Loss Cable Using TCOM-240 Coax with Times Microwave Components



NOTES:

1. CABLE ASSEMBLY LENGTH LABEL PLACEMENT:
36 INCHES OR LESS, ONE LABEL APPROXIMATELY CENTERED.
LONGER THAN 36 INCHES, TWO LABELS APPROXIMATELY 6 INCHES FROM EACH CONNECTOR.
2. CABLES ASSEMBLIES SHALL BE TESTED FOR CONTINUITY.

<p>UNLESS OTHERWISE SPECIFIED LEADING DIMENSIONS ARE IN INCHES DIMENSIONS IN [] ARE MILLIMETERS</p> <p>TOLERANCES:</p> <table border="0"> <tr> <td>.X = ±.2 [9]</td> <td>FRACTIONS ± 1/32</td> </tr> <tr> <td>.XX = ±.02 [0.5]</td> <td>ANGLES ± 1°</td> </tr> <tr> <td>.XXX = ±.005 [0.13]</td> <td></td> </tr> </table> <p>CABLE LENGTH TOLERANCES:</p> <table border="0"> <tr> <td>≤ 12 [305]</td> <td>± .125 [-0]</td> </tr> <tr> <td>> 12 [305] ≤ 60 [1524]</td> <td>± .25 [-0]</td> </tr> <tr> <td>> 60 [1524] ≤ 120 [3048]</td> <td>± .5 [-0]</td> </tr> <tr> <td>> 120 [3048] ≤ 300 [7620]</td> <td>± 1.0 [-0]</td> </tr> <tr> <td>> 300 [7620]</td> <td>± 2.0 [-0]</td> </tr> </table> <p>ALL DIMENSIONS ARE FOR REFERENCE ONLY AND SUBJECT TO CHANGE WITHOUT NOTICE. UNDIMENSIONED NON-CRITICAL FEATURES MAY VARY IN SIZE AND LOCATION. COLORS MAY VARY.</p>		.X = ±.2 [9]	FRACTIONS ± 1/32	.XX = ±.02 [0.5]	ANGLES ± 1°	.XXX = ±.005 [0.13]		≤ 12 [305]	± .125 [-0]	> 12 [305] ≤ 60 [1524]	± .25 [-0]	> 60 [1524] ≤ 120 [3048]	± .5 [-0]	> 120 [3048] ≤ 300 [7620]	± 1.0 [-0]	> 300 [7620]	± 2.0 [-0]	<p>INTERPRET ALL DIMENSIONS AND TOLERANCES PER ASME Y14.5</p> <p>SCALE NONE</p> <p>SHEET 1 OF 1</p>
.X = ±.2 [9]	FRACTIONS ± 1/32																	
.XX = ±.02 [0.5]	ANGLES ± 1°																	
.XXX = ±.005 [0.13]																		
≤ 12 [305]	± .125 [-0]																	
> 12 [305] ≤ 60 [1524]	± .25 [-0]																	
> 60 [1524] ≤ 120 [3048]	± .5 [-0]																	
> 120 [3048] ≤ 300 [7620]	± 1.0 [-0]																	
> 300 [7620]	± 2.0 [-0]																	
<p>PE PASTERNAK an INFINITI® brand</p> <p>Website: www.Pastermack.com Phone: 1.866.727.8376 1.949.261.1920</p>		<p>DESCRIPTION N MALE TO REVERSE POLARITY SMA PLUG LOW LOSS CABLE USING TCOM-240 COAX WITH TIMES MICROWAVE COMPONENTS</p>																
<p>ZONE REV A</p>	<p>DESCRIPTION INITIAL RELEASE</p>	<p>DATE 06/26/2023</p>	<p>CHANGED BY KGLEBOVA</p>	<p>APPROVED AGANWANI</p>														
<p>REVISION</p>		<p>1</p>	<p>2</p>	<p>3</p>														
<p>SIZE A</p>		<p>CAGE CODE 53919</p>	<p>DRAWN BY KGLEBOVA</p>	<p>ITEM NO. PE3C9834</p>														
<p>REV A</p>		<p>1</p>	<p>2</p>	<p>3</p>														