

## 7/16 DIN Male to 7/16 DIN Male Right Angle Cable Using SPP-500-LLPL Coax

### RF Cable Assemblies Technical Data Sheet

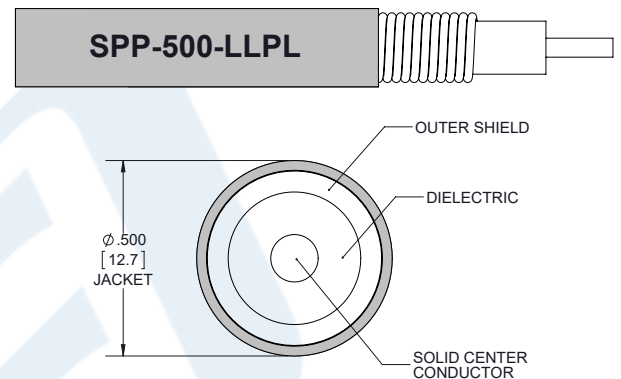
**PE3C9938**

#### Configuration

- Connector 1: 7/16 DIN Male
- Connector 2: 7/16 DIN Male Right Angle
- Cable Type: SPP-500-LLPL
- Coax Flex Type: Corrugated

#### Features

- Max Frequency 3 GHz
- Low PIM: -160 dBc Max
- 76% Phase Velocity
- FEP Jacket



#### Applications

- General Purpose
- Laboratory Use

#### Description

Pasternack's PE3C9938 7/16 DIN male to 7/16 DIN male right angle cable using SPP-500-LLPL coax is part of our full line of RF components available for same-day shipping. Pasternack's corrugated RF cable assemblies are ideal for applications where durability and high power are needed. This Pasternack 7/16 DIN to 7/16 DIN cable assembly has a male to male gender configuration with 50 ohm corrugated SPP-500-LLPL coax. The PE3C9938 7/16 DIN male to 7/16 DIN male cable assembly operates to 3 GHz. The right angle 7/16 DIN interface on the SPP-500-LLPL cable allows for easier connections in tight spaces.

Custom versions of most RF cable assemblies can be built and shipped same day. Custom cable assembly lengths can be obtained by specifying the desired length on the web site at time of order or by contacting a sales representative. Other available RF cable assembly value added services include connector orientation or clocking, heat shrink booting and custom labeling. RF testing can also be performed to document the electrical performance of your cable assembly.

#### Electrical Specifications

| Description             | Minimum | Typical | Maximum | Units |
|-------------------------|---------|---------|---------|-------|
| Frequency Range         | DC      |         | 3       | GHz   |
| VSWR                    |         |         | 1.27:1  |       |
| Velocity of Propagation |         | 76      |         | %     |
| Passive Intermodulation |         |         | -160    | dBc   |

Click the following link (or enter part number in "SEARCH" on website) to obtain additional part information including price, inventory and certifications: [7/16 DIN Male to 7/16 DIN Male Right Angle Cable Using SPP-500-LLPL Coax PE3C9938](#)

7/16 DIN Male to 7/16 DIN Male Right Angle  
Cable Using SPP-500-LLPL Coax

**RF Cable Assemblies Technical Data Sheet**

**PE3C9938**

|             |              |              |
|-------------|--------------|--------------|
| Capacitance | 26.2 [85.96] | pF/ft [pF/m] |
|-------------|--------------|--------------|

**Specifications by Frequency**

| Description           | F1       | F2      | F3       | F4       | F5       | Units |
|-----------------------|----------|---------|----------|----------|----------|-------|
| Frequency             | 0.1      | 0.25    | 0.5      | 1        | 3        | GHz   |
| Insertion Loss (Max.) | 1.005088 | 1.01272 | 1.023909 | 1.034004 | 1.063365 | dB/ft |
|                       | 3.3      | 3.32    | 3.36     | 3.39     | 3.49     | dB/m  |
| VSWR (Max.)           | 1.27:1   | 1.27:1  | 1.27:1   | 1.27:1   | 1.27:1   |       |
| Return Loss (Max.)    | 18.64    | 18.637  | 18.637   | 18.637   | 18.637   | dB    |

**Mechanical Specifications**

**Cable Assembly**

Weight 0.6245 lbs [283.27 g]

**Cable**

Cable Type SPP-500-LLPL  
 Impedance 50 Ohms  
 Inner Conductor Type Solid  
 Inner Conductor Material and Plating Copper Clad Aluminum  
 Dielectric Type PTFE  
 Number of Shields 1  
 Outer Conductor Material and Plating Copper  
 Jacket Material FEP, Blue  
 Jacket Diameter 0.5 in [12.7 mm]  
 One Time Minimum Bend Radius 1.5 in [38.1 mm]

Click the following link (or enter part number in "SEARCH" on website) to obtain additional part information including price, inventory and certifications: [7/16 DIN Male to 7/16 DIN Male Right Angle Cable Using SPP-500-LLPL Coax PE3C9938](#)

7/16 DIN Male to 7/16 DIN Male Right Angle  
Cable Using SPP-500-LLPL Coax

**RF Cable Assemblies Technical Data Sheet**

**PE3C9938**

**Connectors**

| Description                        | Connector 1             | Connector 2                        |
|------------------------------------|-------------------------|------------------------------------|
| Type                               | 7/16 DIN Male Threaded  | 7/16 DIN Male Right Angle Threaded |
| Impedance                          | 50 Ohms                 | 50 Ohms                            |
| Contact Material and Plating       | Phosphor Bronze, Silver | Brass, Silver                      |
| Contact Plating Specification      | 200 µin                 | 5µ in. minimum                     |
| Dielectric Type                    | PTFE                    | PTFE                               |
| Body Material and Plating          | Brass, Tri-Metal        | Brass, Tri-Metal                   |
| Body Plating Specification         | 80 µin                  | 2µ in. minimum                     |
| Coupling Nut Material and Plating  | Brass, Tri-Metal        | Brass, Nickel                      |
| Coupling Nut Plating Specification | 80 µin                  | 5µ in. minimum                     |
| Hex Size                           |                         | 1 1/4 in.                          |
| Torque                             |                         | 18.439 ft-lbs [25 Nm]              |

**Environmental Specifications**

**Temperature**

Operating Range -55 to +125 deg C

**Compliance Certifications** (see [product page](#) for current document)

**Plotted and Other Data**

Notes:

Click the following link (or enter part number in "SEARCH" on website) to obtain additional part information including price, inventory and certifications: [7/16 DIN Male to 7/16 DIN Male Right Angle Cable Using SPP-500-LLPL Coax PE3C9938](#)

## 7/16 DIN Male to 7/16 DIN Male Right Angle Cable Using SPP-500-LLPL Coax

### RF Cable Assemblies Technical Data Sheet

**PE3C9938**

#### How to Order

Part Number Configuration:

**PE3C9938**

- **xx**

**uu**

Unit of Measure:  
cm = Centimeters  
<blank> = Inches  
Length  
Base Number

Example: PE3C9938-12 = 12 inches long cable  
PE3C9938-100cm = 100 cm long cable

7/16 DIN Male to 7/16 DIN Male Right Angle Cable Using SPP-500-LLPL Coax from Pasternack Enterprises has same day shipment for domestic and International orders. Our RF, microwave and millimeter wave products maintain a 99.4% availability and are part of the broadest selection in the industry.

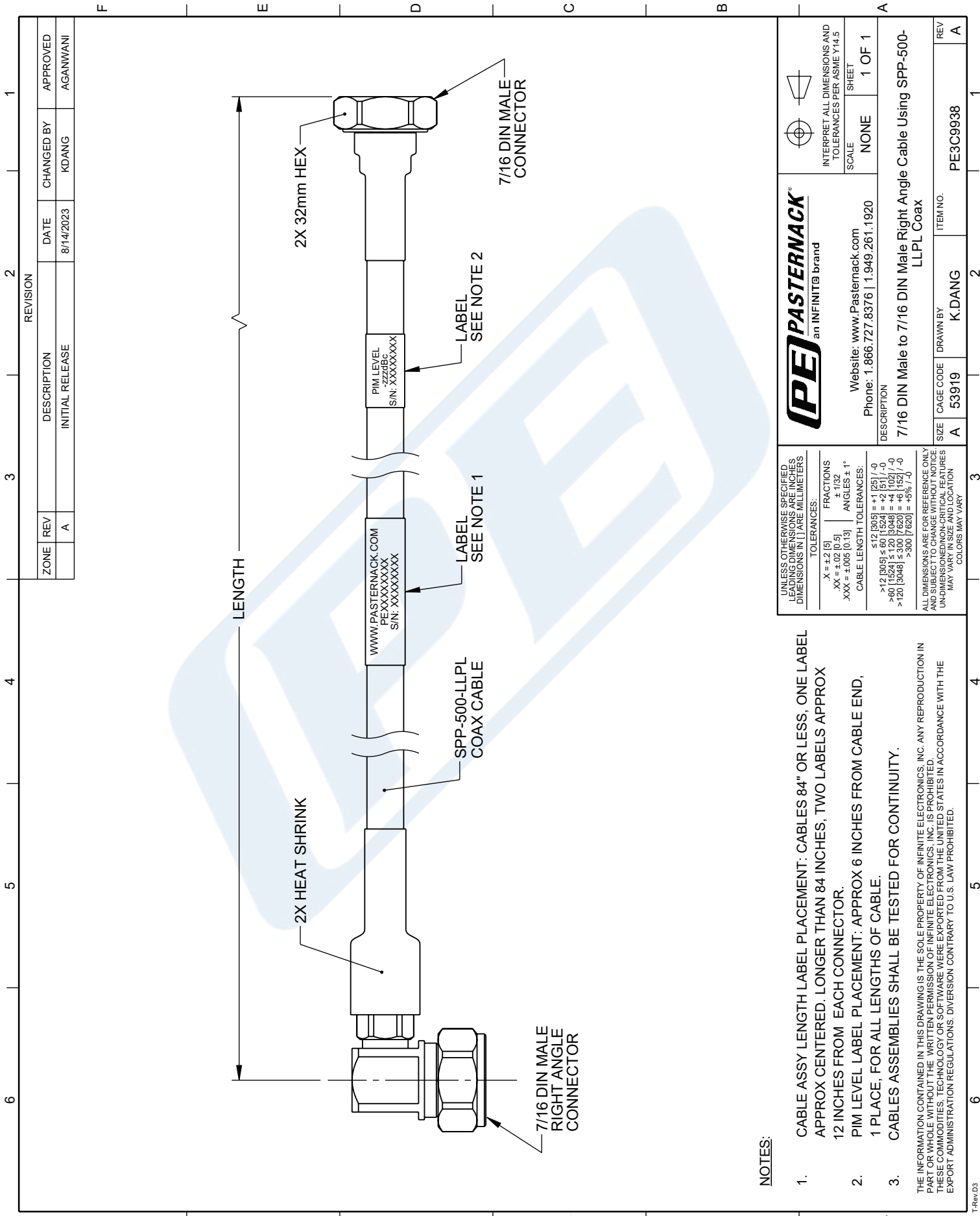
Click the following link (or enter part number in "SEARCH" on website) to obtain additional part information including price, inventory and certifications: [7/16 DIN Male to 7/16 DIN Male Right Angle Cable Using SPP-500-LLPL Coax PE3C9938](#)

URL: <https://www.pasternack.com/7-16-din-male-to-7-16-din-male-cable-using-spp-500-llpl-pe3c9938-p.aspx>

The information contained in this document is accurate to the best of our knowledge and representative of the part described herein. It may be necessary to make modifications to the part and/or the documentation of the part, in order to implement improvements. Pasternack reserves the right to make such changes as required. Unless otherwise stated, all specifications are nominal. Pasternack does not make any representation or warranty regarding the suitability of the part described herein for any particular purpose, and Pasternack does not assume any liability arising out of the use of any part or documentation.

# PE3C9938 CAD Drawing

7/16 DIN Male to 7/16 DIN Male Right Angle Cable Using SPP-500-LLPL Coax



**NOTES:**

1. CABLE ASSY LENGTH LABEL PLACEMENT: CABLES 84" OR LESS, ONE LABEL APPROX CENTERED. LONGER THAN 84 INCHES, TWO LABELS APPROX 12 INCHES FROM EACH CONNECTOR.
2. PIM LEVEL LABEL PLACEMENT: APPROX 6 INCHES FROM CABLE END, 1 PLACE, FOR ALL LENGTHS OF CABLE.
3. CABLES ASSEMBLIES SHALL BE TESTED FOR CONTINUITY.

THE INFORMATION CONTAINED IN THIS DRAWING IS THE SOLE PROPERTY OF INFINITE ELECTRONICS, INC. ANY REPRODUCTION IN PART OR WHOLE WITHOUT THE WRITTEN PERMISSION OF INFINITE ELECTRONICS, INC. IS PROHIBITED. THESE COMMODITIES, TECHNOLOGY OR SOFTWARE WERE EXPORTED FROM THE UNITED STATES IN ACCORDANCE WITH THE EXPORT ADMINISTRATION REGULATIONS. DIVERSION CONTRARY TO U.S. LAW PROHIBITED.

|   |   |  |
|---|---|--|
| <b>PASTERNAK</b><br>an INFINITI® brand  | Website: <a href="http://www.Pasternack.com">www.Pasternack.com</a><br>Phone: 1.866.727.8376   1.949.261.1920   | INTERPRET ALL DIMENSIONS AND TOLERANCES PER ASME Y14.5<br>SCALE: NONE<br>SHEET: 1 OF 1 |
|   | DESCRIPTION<br><b>7/16 DIN Male to 7/16 DIN Male Right Angle Cable Using SPP-500-LLPL Coax</b>  |  |
| UNLESS OTHERWISE SPECIFIED LEADING DIMENSIONS ARE IN INCHES DIMENSIONS IN [ ] ARE MILLIMETERS<br>TOLERANCES:<br>.X = ±.2 [9]<br>.XX = ±.02 [0.5]<br>.XXX = ±.005 [0.13]<br>FRACTIONS ± 1/32<br>ANGLES ± 1°<br>CABLE LENGTH TOLERANCES:<br>≤12 [305] = +1 [25] / -0<br>>12 [305] ≤ 60 [1524] = +2 [51] / -0<br>>60 [1524] ≤ 120 [3048] = +4 [102] / -0<br>>120 [3048] ≤ 300 [7620] = +6 [152] / -0<br>>300 [7620] = +5% / -0 | ALL DIMENSIONS ARE FOR REFERENCE ONLY AND SUBJECT TO CHANGE WITHOUT NOTICE. UNDIMENSIONED NON-CRITICAL FEATURES MAY VARY IN SIZE AND LOCATION. COLORS MAY VARY. |  |
| SIZE: A<br>CABE CODE: 53919<br>DRAWN BY: K.DANG<br>ITEM NO.: PE3C9938   | REV: A  | SHEET: 1 OF 1  |