

SMA Male to SMA Male Right Angle Cable Using Tinned RG405 Coax, LF Solder



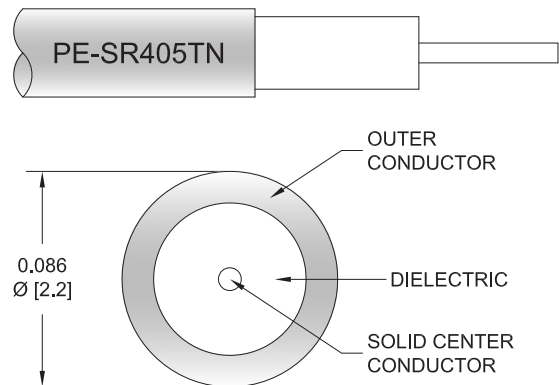
PE3W01022LF

Configuration

- Connector 1: SMA Male
- Connector 2: SMA Male Right Angle
- Cable Type: RG405 Tinned
- Coax Flex Type: Semi-Rigid

Features

- Max Frequency 10 GHz



Applications

- General Purpose
- Laboratory Use

Description

Pasternack's PE3W01022LF SMA male to SMA male right angle cable using tinned RG405 coax is part of our full line of RF components available for same-day shipping. Pasternack's semi-rigid RF cable assemblies are ideal for high performance applications and can be formed, using proper tooling, to the routing pattern required. This Pasternack SMA to SMA cable assembly has a male to male gender configuration with 50 ohm semi-rigid RG405 tinned coax. The PE3W01022LF SMA male to SMA male cable assembly operates to 10 GHz. The right angle SMA interface on the RG405 tinned cable allows for easier connections in tight spaces.

Custom versions of most RF cable assemblies can be built and shipped same day. Custom cable assembly lengths can be obtained by specifying the desired length on the web site at time of order or by contacting a sales representative. Other available RF cable assembly value added services include connector orientation or clocking, heat shrink booting and custom labeling. RF testing can also be performed to document the electrical performance of your cable assembly.

Electrical Specifications

Description	Minimum	Typical	Maximum	Units
Frequency Range	DC		10	GHz
VSWR			1.4:1	

Specifications by Frequency

SMA Male to SMA Male Right Angle Cable
Using Tinned RG405 Coax, LF Solder



PE3W01022LF

Part Number	Length	Description	F1	F2	F3	F4	Units	Weight (lbs)
			Frequency	1000	2500	5000	10000	
PE3W01022LF	Custom Lengths Available	Insertion Loss (Typ.)	0.22	0.32	0.477	0.8	dB/ft	
			0.73	1.04	1.57	2.63	dB/m	
PE3W01022LF-6	6 inch	Insertion Loss (Typ.)	0.41	0.46	0.54	0.7	dB	0.034
PE3W01022LF-12	12 inch	Insertion Loss (Typ.)	0.52	0.62	0.78	1.1	dB	0.04
PE3W01022LF-18	18 inch	Insertion Loss (Typ.)	0.63	0.78	1.02	1.5	dB	0.047
PE3W01022LF-24	24 inch	Insertion Loss (Typ.)	0.74	0.94	1.26	1.9	dB	0.054
PE3W01022LF-36	36 inch	Insertion Loss (Typ.)	0.96	1.25	1.74	2.7	dB	0.067

The insertion loss data for the base model does not include loss due to the connectors. Each length includes insertion loss due to the connectors.

Loss due to Connector 1: 0.1 dB
 Loss due to Connector 2: 0.2 dB
 Base Weight: 0.04 pounds
 Additional Weight per Inch: 0.00109 pounds

Mechanical Specifications

Cable Assembly

Width/Diameter: 0.5 in [12.7 mm]
 Weight: 0.04 lbs [18.14 g]

Cable

Cable Type: RG405 Tinned
 Impedance: 50 Ohms
 Inner Conductor Type: Solid
 Inner Conductor Material and Plating: Copper Clad Steel, Silver
 Dielectric Type: PTFE
 Number of Shields: 1
 Shield Layer 1: Tinned Copper
 One Time Minimum Bend Radius: 0.05 in [1.27 mm]

SMA Male to SMA Male Right Angle Cable
Using Tinned RG405 Coax, LF Solder



PE3W01022LF

Connectors

Description	Connector 1	Connector 2
Type	SMA Male	SMA Male Right Angle
Specification	MIL-STD-348A	MIL-STD-348A
Impedance	50 Ohms	50 Ohms
Configuration	Straight	Right Angle
Mating Cycles	500	
Contact Material and Plating	Brass, Gold	Brass, Gold
Contact Plating Specification	50 µin minimum	50 µin minimum
Dielectric Type	PTFE	PTFE
Body Material and Plating	Stainless Steel, Gold	Stainless Steel, Gold
Body Plating Specification	10 µin minimum	30 µin minimum
Coupling Nut Material and Plating	Brass, Nickel	Brass, Nickel
Coupling Nut Plating Specification	100 µin minimum	100 µin minimum
Hex Size	5/16 in.	5/16 inch
Torque	5 in-lbs 0.57 Nm	3 in-lbs 0.34 Nm
Seal Gasket Material	Silicone	

Environmental Specifications

Operating Range Temperature -55 to +125 deg C

Compliance Certifications (see [product page](#) for current document)

Plotted and Other Data

Notes:

SMA Male to SMA Male Right Angle Cable Using Tinned RG405 Coax, LF Solder



PE3W01022LF

Typical Performance Data

How to Order

Part Number Configuration:

PE3W01022LF - xx uu

Unit of Measure:
cm = Centimeters
<blank> = Inches

Length

Base Number

Example: PE3W01022LF-12 = 12 inches long cable
PE3W01022LF-100cm = 100 cm long cable

SMA Male to SMA Male Right Angle Cable Using Tinned RG405 Coax, LF Solder from Pasternack Enterprises has same day shipment for domestic and International orders. Our RF, microwave and millimeter wave products maintain a 99.4% availability and are part of the broadest selection in the industry.

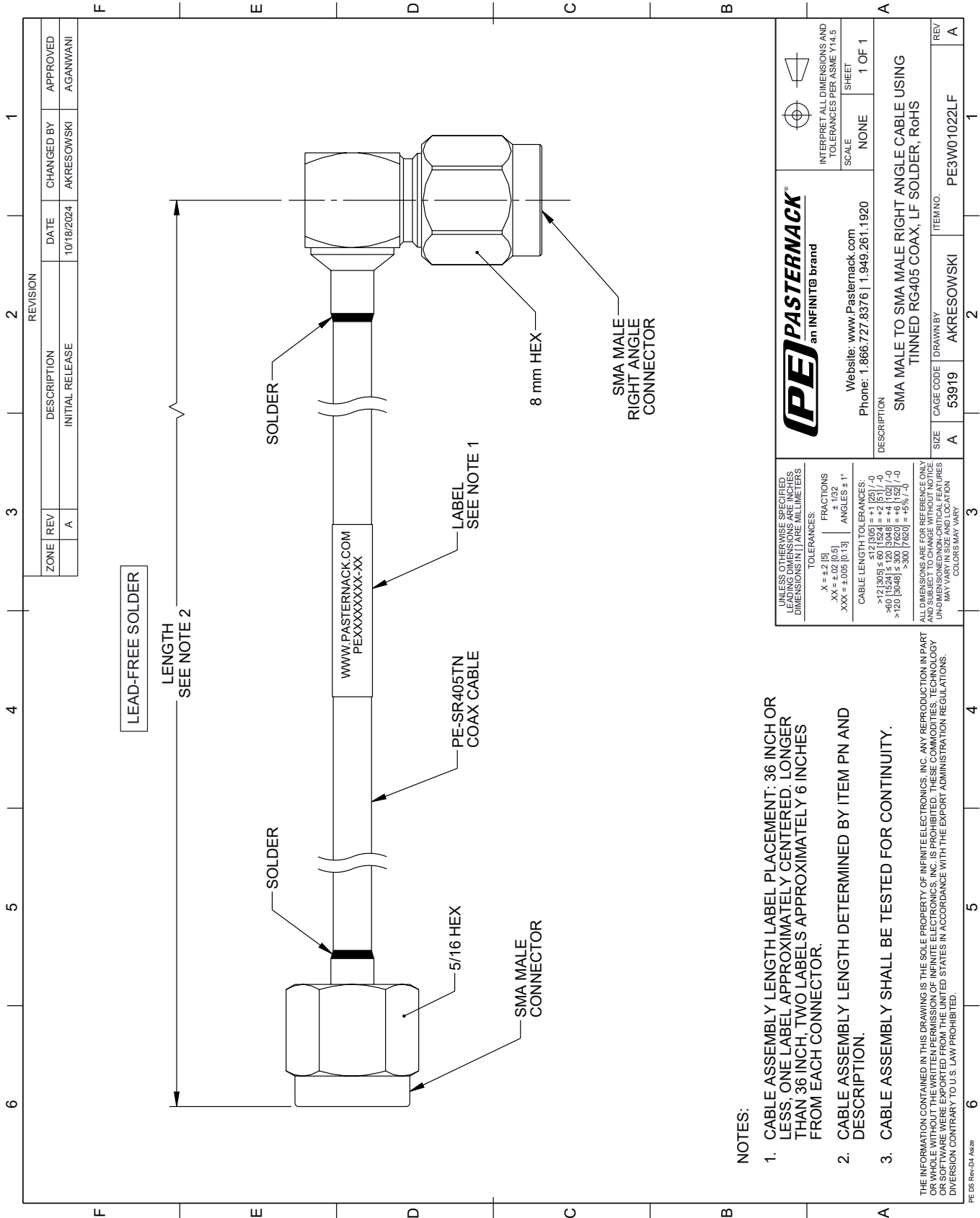
Click the following link (or enter part number in "SEARCH" on website) to obtain additional part information including price, inventory and certifications: [SMA Male to SMA Male Right Angle Cable Using Tinned RG405 Coax, LF Solder PE3W01022LF](#)

URL: <https://www.pasternack.com/sma-male-to-sma-male-cable-using-tinned-rg405-lf-solder-pe3w01022lf-p.aspx>

The information contained within this document is accurate to the best of our knowledge and representative of the part described herein. It may be necessary to make modifications to the part and/or the documentation of the part in order to implement improvements. Pasternack Enterprises reserves the right to make such changes as required. Unless otherwise stated, all specifications are nominal. Pasternack Enterprises does not make any representation or warranty regarding the suitability of the part described herein for any particular purpose, and Pasternack Enterprises does not assume liability arising out of the use of any part or document.

PE3W01022LF CAD Drawing

SMA Male to SMA Male Right Angle Cable Using Tinned RG405 Coax, LF Solder



NOTES:

1. CABLE ASSEMBLY LENGTH LABEL PLACEMENT: 36 INCH OR LESS, ONE LABEL APPROXIMATELY CENTERED, LONGER THAN 36 INCH, TWO LABELS APPROXIMATELY 6 INCHES FROM EACH CONNECTOR.
2. CABLE ASSEMBLY LENGTH DETERMINED BY ITEM PN AND DESCRIPTION.
3. CABLE ASSEMBLY SHALL BE TESTED FOR CONTINUITY.

THE INFORMATION CONTAINED IN THIS DRAWING IS THE SOLE PROPERTY OF INFINITE ELECTRONICS, INC. ANY REPRODUCTION IN PART OR WHOLE WITHOUT THE WRITTEN PERMISSION OF INFINITE ELECTRONICS, INC. IS PROHIBITED. THESE COMMODITIES, TECHNOLOGY OR SOFTWARE ARE EXPORTED FROM THE UNITED STATES IN ACCORDANCE WITH THE EXPORT ADMINISTRATION REGULATIONS. DIVERSION CONTRARY TO U.S. LAW PROHIBITED.

PE DS Rev-04 Add2

REVISION		DATE	CHANGED BY	APPROVED
ZONE	REV			
	A	10/18/2024	AKRESOWSKI	AGANWANI
DESCRIPTION				
INITIAL RELEASE				

		INTERPRET ALL DIMENSIONS AND TOLERANCES PER ASME Y14.5	
Website: www.Pasternack.com Phone: 1.866.727.8376 1.949.261.1920		SCALE	NONE
		SHEET	1 OF 1
DESCRIPTION			
SMA MALE TO SMA MALE RIGHT ANGLE CABLE USING TINNED RG405 COAX, LF SOLDER, RoHS			
SIZE	A	CAGE CODE	53919
DRAWN BY	AKRESOWSKI	ITEM NO.	PE3W01022LF
REV	A		

UNLESS OTHERWISE SPECIFIED, LEADING DIMENSIONS ARE IN INCHES, OTHER DIMENSIONS ARE IN MILLIMETERS.

TOLERANCES:

.X = ±.2 (5)	FRACTIONS
.XX = ±.02 (0.5)	± 1/32
.XXX = ±.005 (0.13)	ANGLES ± 1°

CABLE LENGTH TOLERANCES:

< 12 (305) ≤ 60 (1524) = ±.125 (1/8) / -0
> 60 (1524) ≤ 120 (3048) = ±.125 (1/8) / -0
> 120 (3048) ≤ 300 (7620) = ±.125 (1/8) / -0
> 300 (7620) = ±.125 (1/8) / -0

ALL DIMENSIONS ARE FOR REFERENCE ONLY. UNDIMENSIONED/UNCLEAR FEATURES MAY VARY IN SIZE AND LOCATION. COLORS MAY VARY.