

BNC Female Bulkhead to SMA Male Cable Using RG174 Coax, LF Solder



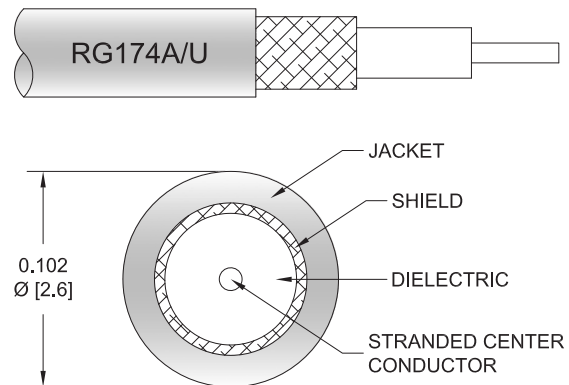
PE3W02388LF

Configuration

- Connector 1: BNC Female Bulkhead
- Connector 2: SMA Male
- Cable Type: RG174
- Coax Flex Type: Flexible

Features

- Max Frequency 1 GHz
- 66% Phase Velocity
- PVC Jacket



Applications

- General Purpose
- Laboratory Use

Description

Pasternack's PE3W02388LF BNC female bulkhead to SMA male cable using RG174 coax is part of our full line of RF components available for same-day shipping. Pasternack's flexible RF cable assemblies are ideal for applications where tight bends and flexure are required. This Pasternack BNC to SMA cable assembly has a female to male gender configuration with 50 ohm flexible RG174 coax. The PE3W02388LF BNC female to SMA male cable assembly operates to 1 GHz. Our RF cable assembly with BNC bulkhead interface allows designers to create external connections on their product enclosures, and can be used in a variety of other rack mount and panel mount applications.

Custom versions of most RF cable assemblies can be built and shipped same day. Custom cable assembly lengths can be obtained by specifying the desired length on the web site at time of order or by contacting a sales representative. Other available RF cable assembly value added services include connector orientation or clocking, heat shrink booting and custom labeling. RF testing can also be performed to document the electrical performance of your cable assembly.

Electrical Specifications

Description	Minimum	Typical	Maximum	Units
Frequency Range	DC		1	GHz
Velocity of Propagation		66		%
Capacitance		31.08 [101.97]		pF/ft [pF/m]

Specifications by Frequency

BNC Female Bulkhead to SMA Male Cable
Using RG174 Coax, LF Solder



PE3W02388LF

Part Number	Length	Description	F1	F2	F3	F4	Units	Weight (lbs)
			Frequency	100	250	500	1000	
PE3W02388LF	Custom Lengths Available	Insertion Loss (Typ.)	0.08	0.14	0.211	0.32	dB/ft	
			0.28	0.45	0.7	1.05	dB/m	
PE3W02388LF-12	12 inch	Insertion Loss (Typ.)	0.29	0.34	0.42	0.52	dB	0.065
PE3W02388LF-24	24 inch	Insertion Loss (Typ.)	0.37	0.48	0.63	0.84	dB	0.074
PE3W02388LF-36	36 inch	Insertion Loss (Typ.)	0.46	0.62	0.84	1.16	dB	0.083
PE3W02388LF-48	48 inch	Insertion Loss (Typ.)	0.54	0.75	1.05	1.48	dB	0.092
PE3W02388LF-72	72 inch	Insertion Loss (Typ.)	0.71	1.03	1.47	2.12	dB	0.11

The insertion loss data for the base model does not include loss due to the connectors. Each length includes insertion loss due to the connectors.

Loss due to Connector 1:	0.1 dB
Loss due to Connector 2:	0.1 dB
Base Weight:	0.065 pounds
Additional Weight per Inch:	0.00075 pounds

Mechanical Specifications

Cable Assembly

Width/Diameter	0.5 in [12.7 mm]
Weight	0.065 lbs [29.48 g]

Cable

Cable Type	RG174
Impedance	50 Ohms
Inner Conductor Type	Stranded
Inner Conductor Material and Plating	Copper Clad Steel
Dielectric Type	PE
Number of Shields	1
Shield Layer 1	Tinned Copper Braid
Jacket Material	PVC, Black
Jacket Diameter	0.11 in [2.79 mm]

BNC Female Bulkhead to SMA Male Cable
Using RG174 Coax, LF Solder



PE3W02388LF

Connectors

Description	Connector 1	Connector 2
Type	BNC Female Bulkhead	SMA Male
Impedance	50 Ohms	50 Ohms
Configuration	Straight	Straight
Contact Material and Plating	Brass, Gold	Brass, Gold
Contact Plating Specification	30 µin minimum	
Dielectric Type	PTFE	PTFE
Body Material and Plating	Brass, Nickel	Brass, Gold
Body Plating Specification	100 µin minimum	
Coupling Nut Material and Plating		Brass, Gold
Hex Size		5/16 in
Torque		5 in-lbs 0.57 Nm

Environmental Specifications

Compliance Certifications (see [product page](#) for current document)

Plotted and Other Data

Notes:

BNC Female Bulkhead to SMA Male Cable Using RG174 Coax, LF Solder



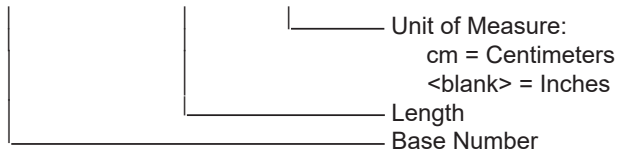
PE3W02388LF

Typical Performance Data

How to Order

Part Number Configuration:

PE3W02388LF - xx uu



Example: PE3W02388LF-12 = 12 inches long cable
PE3W02388LF-100cm = 100 cm long cable

BNC Female Bulkhead to SMA Male Cable Using RG174 Coax, LF Solder from Pasternack Enterprises has same day shipment for domestic and International orders. Our RF, microwave and millimeter wave products maintain a 99.4% availability and are part of the broadest selection in the industry.

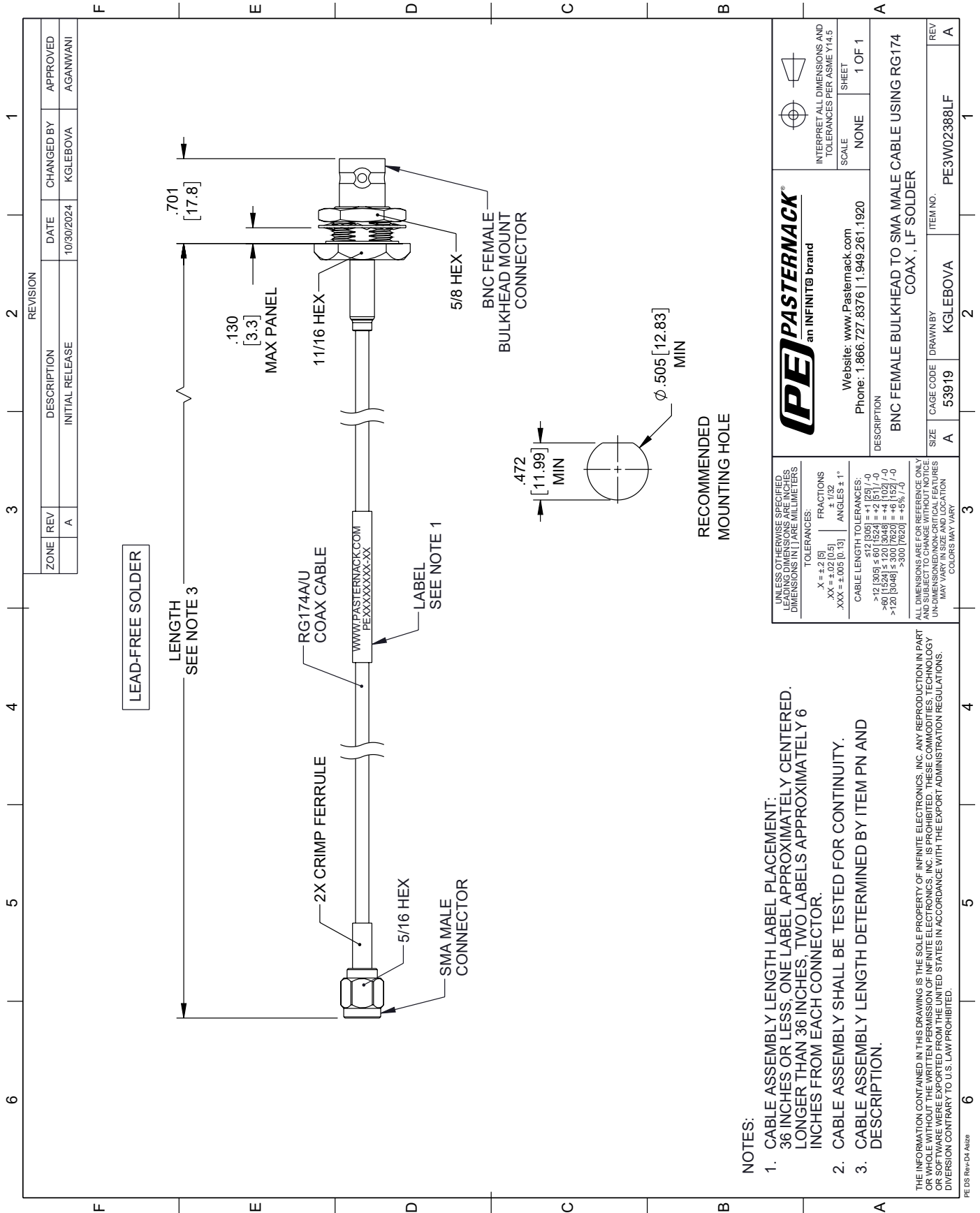
Click the following link (or enter part number in "SEARCH" on website) to obtain additional part information including price, inventory and certifications: [BNC Female Bulkhead to SMA Male Cable Using RG174 Coax, LF Solder PE3W02388LF](https://www.pasternack.com/bnc-female-bulkhead-to-sma-male-cable-using-rg174-coax-lf-solder-pe3w02388lf)

URL: <https://www.pasternack.com/bnc-female-bulkhead-to-sma-male-cable-using-rg174-lf-solder-pe3w02388lf-p.aspx>

The information contained within this document is accurate to the best of our knowledge and representative of the part described herein. It may be necessary to make modifications to the part and/or the documentation of the part in order to implement improvements. Pasternack Enterprises reserves the right to make such changes as required. Unless otherwise stated, all specifications are nominal. Pasternack Enterprises does not make any representation or warranty regarding the suitability of the part described herein for any particular purpose, and Pasternack Enterprises does not assume liability arising out of the use of any part or document.

PE3W02388LF CAD Drawing

BNC Female Bulkhead to SMA Male Cable Using RG174 Coax, LF Solder



- NOTES:**
1. CABLE ASSEMBLY LENGTH LABEL PLACEMENT: 36 INCHES OR LESS, ONE LABEL APPROXIMATELY CENTERED. LONGER THAN 36 INCHES, TWO LABELS APPROXIMATELY 6 INCHES FROM EACH CONNECTOR.
 2. CABLE ASSEMBLY SHALL BE TESTED FOR CONTINUITY.
 3. CABLE ASSEMBLY LENGTH DETERMINED BY ITEM PN AND DESCRIPTION.

<p>PASTERNAK an INFINIT® brand</p> <p>Website: www.Pasternack.com Phone: 1.866.727.8376 1.949.261.1920</p>		<p>INTERPRET ALL DIMENSIONS AND TOLERANCES PER ASME Y14.5</p> <p>SCALE NONE</p> <p>SHEET 1 OF 1</p>
<p>DESCRIPTION BNC FEMALE BULKHEAD TO SMA MALE CABLE USING RG174 COAX, LF SOLDER</p>		<p>REV A</p>
<p>ITEM NO. PE3W02388LF</p>	<p>SIZE A</p>	<p>REV A</p>
<p>CAGE CODE 53919</p>	<p>DRAWN BY KGLEBOVA</p>	<p>REV A</p>