

## SMA Male to SMA Male Right Angle Cable Using PE-SR405FLJ Coax with HeatShrink



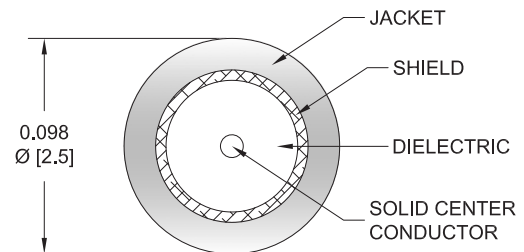
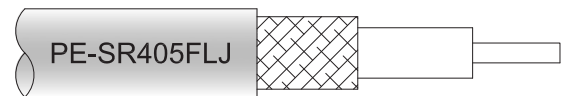
### PE3W02559/HS

#### Configuration

- Connector 1: SMA Male
- Connector 2: SMA Male Right Angle
- Cable Type: PE-SR405FLJ
- Coax Flex Type: Formable

#### Features

- Max Frequency 10 GHz
- Shielding Effectivity > 100 dB
- 69.5% Phase Velocity
- FEP Jacket



#### Applications

- General Purpose
- Laboratory Use

#### Description

Pasternack's PE3W02559/HS SMA male to SMA male right angle cable using PE-SR405FLJ coax is part of our full line of RF components available for same-day shipping. Pasternack's formable RF cable assemblies provide an alternative to costly pre-formed semi-rigid assemblies since they are hand formable. This Pasternack SMA to SMA cable assembly has a male to male gender configuration with 50 ohm formable PE-SR405FLJ coax. The PE3W02559/HS SMA male to SMA male cable assembly operates to 10 GHz. The right angle SMA interface on the PE-SR405FLJ cable allows for easier connections in tight spaces.

Custom versions of most RF cable assemblies can be built and shipped same day. Custom cable assembly lengths can be obtained by specifying the desired length on the web site at time of order or by contacting a sales representative. Other available RF cable assembly value added services include connector orientation or clocking, heat shrink booting and custom labeling. RF testing can also be performed to document the electrical performance of your cable assembly.

#### Electrical Specifications

Description	Minimum	Typical	Maximum	Units
Frequency Range	DC		10	GHz
VSWR			1.4:1	
Velocity of Propagation		69.5		%
RF Shielding	100			dB
Group Delay		1.43 [4.69]		ns/ft [ns/m]
Capacitance		29 [95.14]		pF/ft [pF/m]
DC Resistance Inner Conductor		65.7 [215.55]		Ohms/1000ft [Ohms/Km]
DC Resistance Outer Conductor		10.2 [33.46]		Ohms/1000ft [Ohms/Km]

#### Specifications by Frequency

SMA Male to SMA Male Right Angle Cable Using  
PE-SR405FLJ Coax with HeatShrink



**PE3W02559/HS**

Part Number	Length	Description	F1	F2	F3	F4	F5	Units	Weight (lbs)
			Frequency	500	1000	2500	5000	10000	
PE3W02559/HS	Custom Lengths Available	Insertion Loss (Typ.)	0.15	0.225	0.347	0.549	0.812	dB/ft	
			0.5	0.74	1.14	1.81	2.67	dB/m	
PE3W02559/HS-6	6 In	Insertion Loss (Typ.)	0.38	0.42	0.48	0.58	0.71	dB	0.028
PE3W02559/HS-9	9 In	Insertion Loss (Typ.)	0.42	0.47	0.57	0.72	0.91	dB	0.032
PE3W02559/HS-12	12 In	Insertion Loss (Typ.)	0.45	0.53	0.65	0.85	1.12	dB	0.035
PE3W02559/HS-18	18 In	Insertion Loss (Typ.)	0.53	0.64	0.83	1.13	1.52	dB	0.043
PE3W02559/HS-24	24 In	Insertion Loss (Typ.)	0.6	0.75	1	1.4	1.93	dB	0.05

The insertion loss data for the base model does not include loss due to the connectors. Each length includes insertion loss due to the connectors.

Loss due to Connector 1:	0.1 dB
Loss due to Connector 2:	0.2 dB
Base Weight:	0.517 pounds
Additional Weight per Inch:	0.00117 pounds

**Mechanical Specifications**

**Cable Assembly**

Width/Diameter	0.5 in [12.7 mm]
Weight	0.021 lbs [9.53 g]

**Cable**

Cable Type	PE-SR405FLJ
Impedance	50 Ohms
Inner Conductor Type	Solid
Inner Conductor Material and Plating	Copper Clad Steel, Silver
Dielectric Type	PTFE
Number of Shields	1
Outer Conductor 1 Material and Plating	Tinned Copper Composite Braid
Jacket Material	FEP, Black
Jacket Diameter	0.105 in [2.67 mm]
One Time Minimum Bend Radius	0.5 in [12.7 mm]
Repeated Minimum Bend Radius	0.787 in [19.99 mm]

SMA Male to SMA Male Right Angle Cable Using PE-SR405FLJ Coax with HeatShrink



**PE3W02559/HS**

**Connectors**

Description	Connector 1	Connector 2
Type	SMA Male	SMA Male Right Angle
Specification	MIL-STD-348A	
Impedance	50 Ohms	50 Ohms
Configuration	Straight	Right Angle
Mating Cycles	500	
Contact Material and Plating	Brass, Gold	Brass, Gold over Nickel
Contact Plating Specification	50 μin minimum	8 μin minimum
Dielectric Type	PTFE	PTFE
Body Material and Plating	Stainless Steel, Gold	Brass, Gold over Nickel
Body Plating Specification	10 μin minimum	4 μin minimum
Coupling Nut Material and Plating	Brass, Nickel	Passivated Stainless Steel
Coupling Nut Plating Specification	100 μin minimum	
Hex Size	5/16 inch	5/16 inch
Torque	3 in-lbs 0.34 Nm	8 in-lbs 0.9 Nm

**Environmental Specifications**

**Compliance Certifications** (see [product page](#) for current document)

**Plotted and Other Data**

Notes:

## SMA Male to SMA Male Right Angle Cable Using PE-SR405FLJ Coax with HeatShrink



### PE3W02559/HS

#### Typical Performance Data

#### How to Order

Part Number Configuration:

**PE3W02559/HS - xx uu**



Example: PE3W02559/HS-12 = 12 inches long cable  
PE3W02559/HS-100cm = 100 cm long cable

SMA Male to SMA Male Right Angle Cable Using PE-SR405FLJ Coax with HeatShrink from Pasternack Enterprises has same day shipment for domestic and International orders. Our RF, microwave and millimeter wave products maintain a 99.4% availability and are part of the broadest selection in the industry.

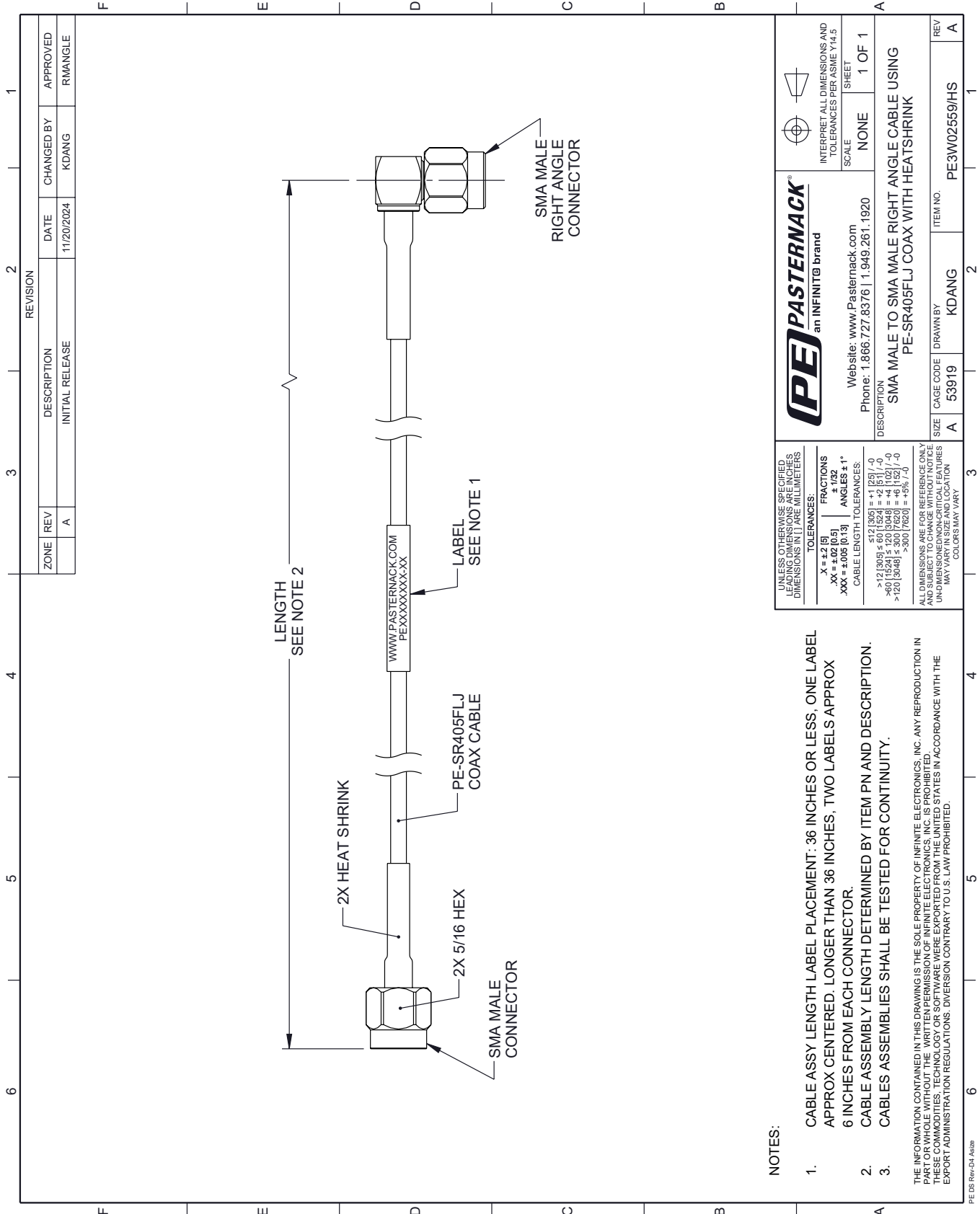
Click the following link (or enter part number in "SEARCH" on website) to obtain additional part information including price, inventory and certifications: [SMA Male to SMA Male Right Angle Cable Using PE-SR405FLJ Coax with HeatShrink PE3W02559/HS](#)

URL: <https://www.pasternack.com/sma-male-to-sma-male-cable-using-pe-sr405flj-with-heatshrink-pe3w02559-hs-p.aspx>

The information contained within this document is accurate to the best of our knowledge and representative of the part described herein. It may be necessary to make modifications to the part and/or the documentation of the part in order to implement improvements. Pasternack Enterprises reserves the right to make such changes as required. Unless otherwise stated, all specifications are nominal. Pasternack Enterprises does not make any representation or warranty regarding the suitability of the part described herein for any particular purpose, and Pasternack Enterprises does not assume liability arising out of the use of any part or document.

# PE3W02559/HS CAD Drawing

SMA Male to SMA Male Right Angle Cable Using PE-SR405FLJ Coax with HeatShrink



REVISION		DATE	CHANGED BY	APPROVED
ZONE	REV			
	A	11/20/2024	KDANG	RMANGLE
DESCRIPTION				
INITIAL RELEASE				

**UNLESS OTHERWISE SPECIFIED LEADING DIMENSIONS ARE IN INCHES DIMENSIONS IN [ ] ARE MILLIMETERS**

**TOLERANCES:**  
 .X = ±.2 [5]  
 .XX = ±.02 [0.5]  
 .XXX = ±.005 [0.13]

**FRACTIONS**  
 ± 1/32

**ANGLES** ± 1°

**CABLE LENGTH TOLERANCES:**  
 >12 [305] ±.12 [3.05] = +1 [25] / -0  
 >60 [1524] ±.12 [3.05] = +4 [102] / -0  
 >120 [3048] ±.12 [3.05] = +4 [102] / -0  
 >240 [6096] ±.12 [3.05] = +5% / -0

**ALL DIMENSIONS ARE FOR REFERENCE ONLY UNLESS OTHERWISE SPECIFIED. UNDIMENSIONED NON-CRITICAL FEATURES MAY VARY IN SIZE AND LOCATION. COLORS MAY VARY.**

**PE PASTERNAK®**  
 an INFINITE brand

Website: [www.Pasternack.com](http://www.Pasternack.com)  
 Phone: 1.866.727.8376 | 1.949.261.1920

**INTERPRET ALL DIMENSIONS AND TOLERANCES PER ASME Y14.5**

SCALE: NONE  
 SHEET: 1 OF 1

DESCRIPTION: SMA MALE TO SMA MALE RIGHT ANGLE CABLE USING PE-SR405FLJ COAX WITH HEATSHRINK

SIZE	CAGE CODE	DRAWN BY	ITEM NO.
A	53919	KDANG	PE3W02559/HS

REV A

- NOTES:**
- CABLE ASSY LENGTH LABEL PLACEMENT: .36 INCHES OR LESS, ONE LABEL APPROX CENTERED. LONGER THAN .36 INCHES, TWO LABELS APPROX .6 INCHES FROM EACH CONNECTOR.
  - CABLE ASSEMBLY LENGTH DETERMINED BY ITEM PN AND DESCRIPTION.
  - CABLE ASSEMBLIES SHALL BE TESTED FOR CONTINUITY.
- THE INFORMATION CONTAINED IN THIS DRAWING IS THE SOLE PROPERTY OF INFINITE ELECTRONICS, INC. ANY REPRODUCTION IN PART OR WHOLE WITHOUT THE WRITTEN PERMISSION OF INFINITE ELECTRONICS, INC. IS PROHIBITED. THESE COMMODITIES, TECHNOLOGY OR SOFTWARE WERE EXPORTED FROM THE UNITED STATES IN ACCORDANCE WITH THE EXPORT ADMINISTRATION REGULATIONS. DIVERSION CONTRARY TO U.S. LAW PROHIBITED.