

## N Male to SMA Male Cable Using RG223 Coax with HeatShrink



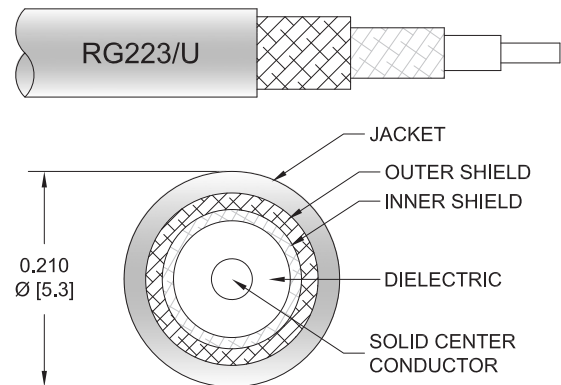
### PE3W03490/HS

#### Configuration

- Connector 1: N Male
- Connector 2: SMA Male
- Cable Type: RG223
- Coax Flex Type: Flexible

#### Features

- Max Frequency 11 GHz
- 66% Phase Velocity
- Double Shielded
- PVC Jacket



#### Applications

- General Purpose
- Laboratory Use

#### Description

Pasternack's PE3W03490/HS type N male to SMA male cable using RG223 coax is part of our full line of RF components available for same-day shipping. Pasternack's flexible RF cable assemblies are ideal for applications where tight bends and flexure are required. This Pasternack type N to SMA cable assembly has a male to male gender configuration with 50 ohm flexible RG223 coax. The PE3W03490/HS type N male to SMA male cable assembly operates to 11 GHz. The double shielding of this Pasternack cable assembly provides excellent shielding effectiveness.

Custom versions of most RF cable assemblies can be built and shipped same day. Custom cable assembly lengths can be obtained by specifying the desired length on the web site at time of order or by contacting a sales representative. Other available RF cable assembly value added services include connector orientation or clocking, heat shrink booting and custom labeling. RF testing can also be performed to document the electrical performance of your cable assembly.

#### Electrical Specifications

Description	Minimum	Typical	Maximum	Units
Frequency Range	DC		11	GHz
VSWR			1.4:1	
Velocity of Propagation		66		%
Capacitance		30.8 [101.05]		pF/ft [pF/m]
Operating Voltage (AC)			500	Vrms

#### Specifications by Frequency

## N Male to SMA Male Cable Using RG223 Coax with HeatShrink



### PE3W03490/HS

Part Number	Length	Description	F1	F2	F3	F4	F5	Units	Weight (lbs)
			Frequency					MHz	
PE3W03490/HS	Custom Lengths Available	Insertion Loss (Typ.)	0.09	0.13	0.21	0.33	0.54	dB/ft	
			0.3	0.43	0.69	1.09	1.78	dB/m	
PE3W03490/HS-12	12 inch	Insertion Loss (Typ.)	0.29	0.33	0.41	0.53	0.74	dB	0.114
PE3W03490/HS-24	24 inch	Insertion Loss (Typ.)	0.38	0.46	0.62	0.86	1.28	dB	0.146
PE3W03490/HS-36	36 inch	Insertion Loss (Typ.)	0.47	0.59	0.83	1.19	1.82	dB	0.177
PE3W03490/HS-60	60 inch	Insertion Loss (Typ.)	0.65	0.85	1.25	1.85	2.9	dB	0.239
PE3W03490/HS-72	72 inch	Insertion Loss (Typ.)	0.74	0.98	1.46	2.18	3.44	dB	0.27

The insertion loss data for the base model does not include loss due to the connectors. Each length includes insertion loss due to the connectors.

Loss due to Connector 1:	0.1 dB
Loss due to Connector 2:	0.1 dB
Base Weight:	0.114 pounds
Additional Weight per Inch:	0.00259 pounds

### Mechanical Specifications

#### Cable Assembly

Weight 0.114 lbs [51.71 g]

#### Cable

Cable Type	RG223
Impedance	50 Ohms
Inner Conductor Type	Solid
Inner Conductor Material and Plating	Copper, Silver
Dielectric Type	PE
Number of Shields	2
Shield Layer 1	Silver Plated Copper Braid
Shield Layer 2	Silver Plated Copper Braid
Jacket Material	PVC, Black
Jacket Diameter	0.209 in [5.31 mm]
Repeated Minimum Bend Radius	1 in [25.4 mm]

## N Male to SMA Male Cable Using RG223 Coax with HeatShrink



### PE3W03490/HS

#### Connectors

Description	Connector 1	Connector 2
Type	N Male	SMA Male
Specification	MIL-STD-348A	MIL-STD-348A
Impedance	50 Ohms	50 Ohms
Configuration	Straight	Straight
Contact Material and Plating	Brass, Gold	Brass, Gold
Contact Plating Specification	30 µin minimum	50 µin minimum
Dielectric Type	PTFE	PTFE
Body Material and Plating	Brass, Tri-Metal	Brass, Nickel
Body Plating Specification		100 µin minimum
Coupling Nut Material and Plating	Brass, Tri-Metal	Brass, Nickel
Coupling Nut Plating Specification		100 µin minimum
Hex Size	18 mm	5/16 inch
Torque	9 in-lbs 1.02 Nm	3 in-lbs 0.34 Nm

#### Environmental Specifications

Operating Range Temperature -40 to +80 deg C

**Compliance Certifications** (see [product page](#) for current document)

#### Plotted and Other Data

Notes:

## N Male to SMA Male Cable Using RG223 Coax with HeatShrink



### PE3W03490/HS

#### Typical Performance Data

#### How to Order

Part Number Configuration:

**PE3W03490/HS**

- **xx**

**uu**

Unit of Measure:

cm = Centimeters

<blank> = Inches

Length

Base Number

Example: PE3W03490/HS-12 = 12 inches long cable  
PE3W03490/HS-100cm = 100 cm long cable

N Male to SMA Male Cable Using RG223 Coax with HeatShrink from Pasternack Enterprises has same day shipment for domestic and International orders. Our RF, microwave and millimeter wave products maintain a 99.4% availability and are part of the broadest selection in the industry.

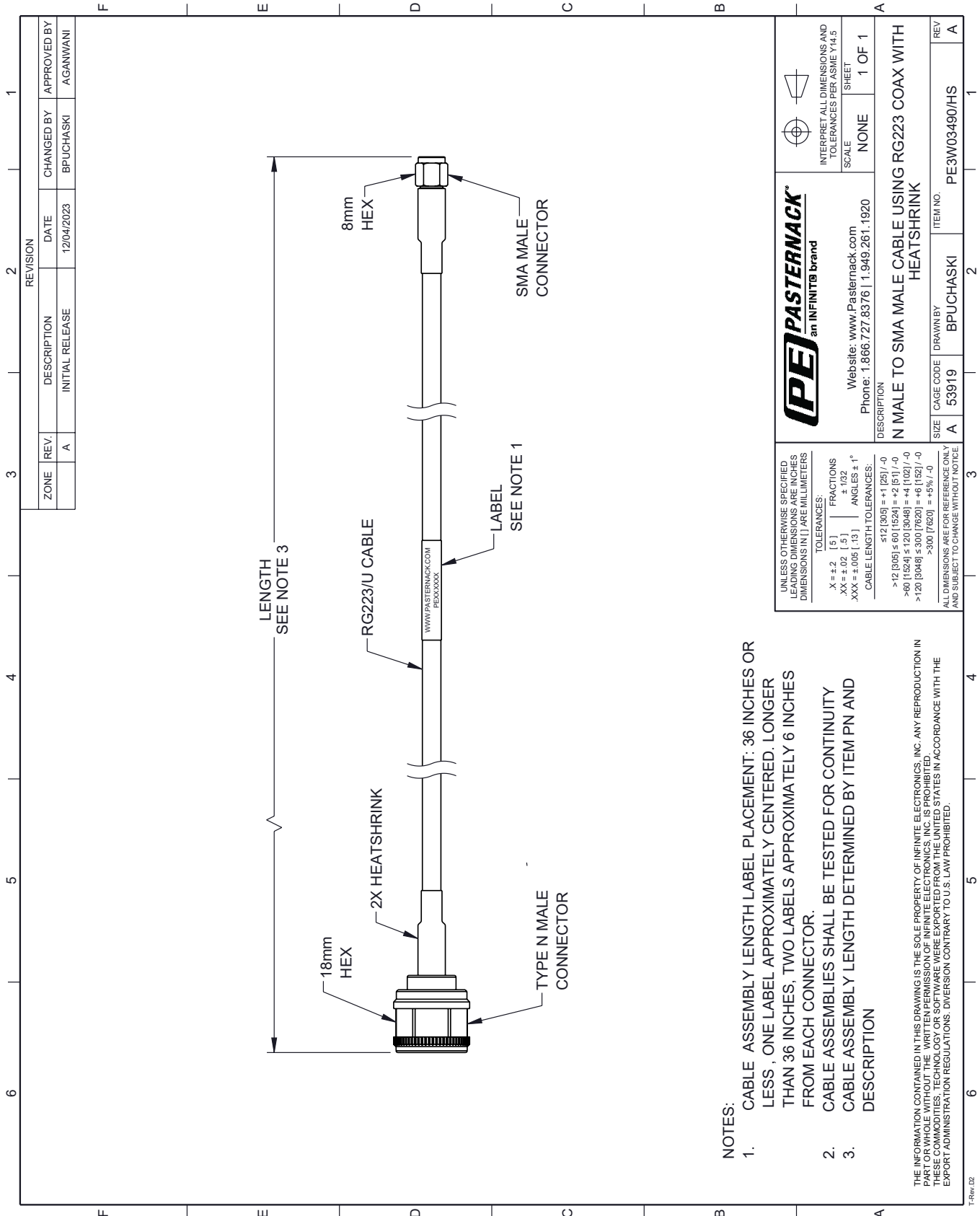
Click the following link (or enter part number in "SEARCH" on website) to obtain additional part information including price, inventory and certifications: [N Male to SMA Male Cable Using RG223 Coax with HeatShrink PE3W03490/HS](#)

URL: <https://www.pasternack.com/n-male-to-sma-male-cable-using-rg223-with-heatshrink-pe3w03490-hs-p.aspx>

The information contained within this document is accurate to the best of our knowledge and representative of the part described herein. It may be necessary to make modifications to the part and/or the documentation of the part in order to implement improvements. Pasternack Enterprises reserves the right to make such changes as required. Unless otherwise stated, all specifications are nominal. Pasternack Enterprises does not make any representation or warranty regarding the suitability of the part described herein for any particular purpose, and Pasternack Enterprises does not assume liability arising out of the use of any part or document.

# PE3W03490/HS CAD Drawing

N Male to SMA Male Cable Using RG223 Coax with HeatShrink



REVISION		DATE	CHANGED BY	APPROVED BY
ZONE	REV.	DESCRIPTION	INITIAL RELEASE	
	A			AGANWANI

ZONE	REV.	DESCRIPTION	INITIAL RELEASE	APPROVED BY
	A			AGANWANI

**PE PASTERNAK**  
an INFINITE brand

Website: [www.Pasternack.com](http://www.Pasternack.com)  
Phone: 1.866.727.8376 | 1.949.261.1920

UNLESS OTHERWISE SPECIFIED  
LEADING DIMENSIONS ARE INCHES  
DIMENSIONS IN [ ] ARE MILLIMETERS

TOLERANCES:  
 .X = ±.2 [ .5 ] FRACTIONS ± 1/32  
 .XX = ±.02 [ .5 ] ANGLES ± 1°  
 .XXX = ±.005 [ .13 ]

CABLE LENGTH TOLERANCES:  
 ≤12 [305] = +1 [25] / -0  
 >12 [305] ≤ 60 [1524] = +2 [51] / -0  
 >60 [1524] ≤ 120 [3048] = +4 [102] / -0  
 >120 [3048] ≤ 300 [7620] = +8 [152] / -0  
 >300 [7620] = +9% / -0

ALL DIMENSIONS ARE FOR REFERENCE ONLY  
AND SUBJECT TO CHANGE WITHOUT NOTICE

INTERPRET ALL DIMENSIONS AND TOLERANCES PER ASME Y14.5  
SCALE NONE SHEET 1 OF 1

DESCRIPTION  
N MALE TO SMA MALE CABLE USING RG223 COAX WITH HEATSHRINK

ITEM NO. PE3W03490/HS

CAGE CODE 53919 DRAWN BY BPUCHASKI

SIZE A

- NOTES:
- CABLE ASSEMBLY LENGTH LABEL PLACEMENT: 36 INCHES OR LESS, ONE LABEL APPROXIMATELY CENTERED. LONGER THAN 36 INCHES, TWO LABELS APPROXIMATELY 6 INCHES FROM EACH CONNECTOR.
  - CABLE ASSEMBLIES SHALL BE TESTED FOR CONTINUITY
  - CABLE ASSEMBLY LENGTH DETERMINED BY ITEM PN AND DESCRIPTION

THE INFORMATION CONTAINED IN THIS DRAWING IS THE SOLE PROPERTY OF INFINITE ELECTRONICS, INC. ANY REPRODUCTION IN PART OR WHOLE WITHOUT THE WRITTEN PERMISSION OF INFINITE ELECTRONICS, INC. IS PROHIBITED. THESE COMMODITIES, TECHNOLOGY OR SOFTWARE WERE EXPORTED FROM THE UNITED STATES IN ACCORDANCE WITH THE EXPORT ADMINISTRATION REGULATIONS. DIVERSION CONTRARY TO U.S. LAW PROHIBITED.