



SMB Plug Right Angle to SMA Female Bulkhead Cable Using RG178 Coax , LF Solder

RF Cable Assemblies Technical Data Sheet

PE3W04855LF

Configuration

- Connector 1: SMB Plug Right Angle
- Connector 2: SMA Female Bulkhead
- Cable Type: RG178
- Coax Flex Type: Flexible

Features

- Max Frequency 3 GHz
- 70% Phase Velocity
- FEP Jacket

Applications

- General Purpose
- Laboratory Use

Description

Pasternack's PE3W04855LF SMB plug right angle to SMA female bulkhead cable using RG178 coax is part of our full line of RF components available for same-day shipping. Pasternack's flexible RF cable assemblies are ideal for applications where tight bends and flexure are required. This Pasternack SMB to SMA cable assembly has a plug to female gender configuration with 50 ohm flexible RG178 coax. The PE3W04855LF SMB plug to SMA female cable assembly operates to 3 GHz. The right angle SMB interface on the RG178 cable allows for easier connections in tight spaces. Our RF cable assembly with SMA bulkhead interface allows designers to create external connections on their product enclosures, and can be used in a variety of other rack mount and panel mount applications.

Custom versions of most RF cable assemblies can be built and shipped same day. Custom cable assembly lengths can be obtained by specifying the desired length on the web site at time of order or by contacting a sales representative. Other available RF cable assembly value added services include connector orientation or clocking, heat shrink booting and custom labeling. RF testing can also be performed to document the electrical performance of your cable assembly.

Click the following link (or enter part number in "SEARCH" on website) to obtain additional part information including price, inventory and certifications: [SMB Plug Right Angle to SMA Female Bulkhead Cable Using RG178 Coax , LF Solder PE3W04855LF](#)



SMB Plug Right Angle to SMA Female Bulkhead
Cable Using RG178 Coax , LF Solder

RF Cable Assemblies Technical Data Sheet

PE3W04855LF

Electrical Specifications

Description	Minimum	Typical	Maximum	Units
Frequency Range	DC		3	GHz
VSWR			1.6:1	
Velocity of Propagation		70		%
Capacitance		29.4 [96.46]		pF/ft [pF/m]

Specifications by Frequency

Description	F1	F2	F3	F4	F5	Units
Frequency	0.1	0.25	0.5	1	3	GHz
Insertion Loss (Typ.)	0.138	0.208	0.305	0.444	0.784	dB/ft
	0.45	0.68	1	1.46	2.57	

Electrical Specification Notes:

Insertion Loss does not include the loss of the connectors. Insertion Loss is estimated as 0.2 dB for the right angle connector and 0.1 dB for the straight connector.

Mechanical Specifications

Cable Assembly

Weight 0.024 lbs [10.89 g]

Cable

Cable Type RG178
 Impedance 50 Ohms
 Inner Conductor Type Stranded
 Inner Conductor Material and Plating Copper Clad Steel, Silver
 Dielectric Type PTFE
 Number of Shields 1
 Shield Layer 1 Silver Plated Copper Braid
 Jacket Material FEP, Tan
 Jacket Diameter 0.072 in [1.83 mm]

Repeated Minimum Bend Radius 0.4 in [10.16 mm]

Click the following link (or enter part number in "SEARCH" on website) to obtain additional part information including price, inventory and certifications: [SMB Plug Right Angle to SMA Female Bulkhead Cable Using RG178 Coax , LF Solder PE3W04855LF](#)



SMB Plug Right Angle to SMA Female Bulkhead
Cable Using RG178 Coax , LF Solder

RF Cable Assemblies Technical Data Sheet

PE3W04855LF

Connectors

Description	Connector 1	Connector 2
Type	SMB Plug Right Angle Push-On	SMA Female Bulkhead Threaded
Specification	MIL-STD-348A	
Impedance	50 Ohms	50 Ohms
Mating Cycles		500
Contact Material and Plating	Beryllium Copper, Gold	Beryllium Copper, Gold
Contact Plating Specification	30 µin minimum	
Dielectric Type	PTFE	PTFE
Outer Conductor Material and Plating		Brass, Gold
Body Material and Plating	Brass, Nickel	Brass, Gold
Body Plating Specification	100 µin minimum	
Coupling Nut Material and Plating		Brass, Gold

Environmental Specifications

Temperature

Operating Range -55 to +165 deg C

Compliance Certifications (see [product page](#) for current document)

Plotted and Other Data

Notes:

Click the following link (or enter part number in "SEARCH" on website) to obtain additional part information including price, inventory and certifications: [SMB Plug Right Angle to SMA Female Bulkhead Cable Using RG178 Coax , LF Solder PE3W04855LF](#)



SMB Plug Right Angle to SMA Female Bulkhead
Cable Using RG178 Coax , LF Solder

RF Cable Assemblies Technical Data Sheet

PE3W04855LF

How to Order

Part Number Configuration:

PE3W04855LF - xx uu

Unit of Measure:
cm = Centimeters
<blank> = Inches
Length
Base Number

Example: PE3W04855LF-12 = 12 inches long cable
PE3W04855LF-100cm = 100 cm long cable

SMB Plug Right Angle to SMA Female Bulkhead Cable Using RG178 Coax , LF Solder from Pasternack Enterprises has same day shipment for domestic and International orders. Our RF, microwave and millimeter wave products maintain a 99.4% availability and are part of the broadest selection in the industry.

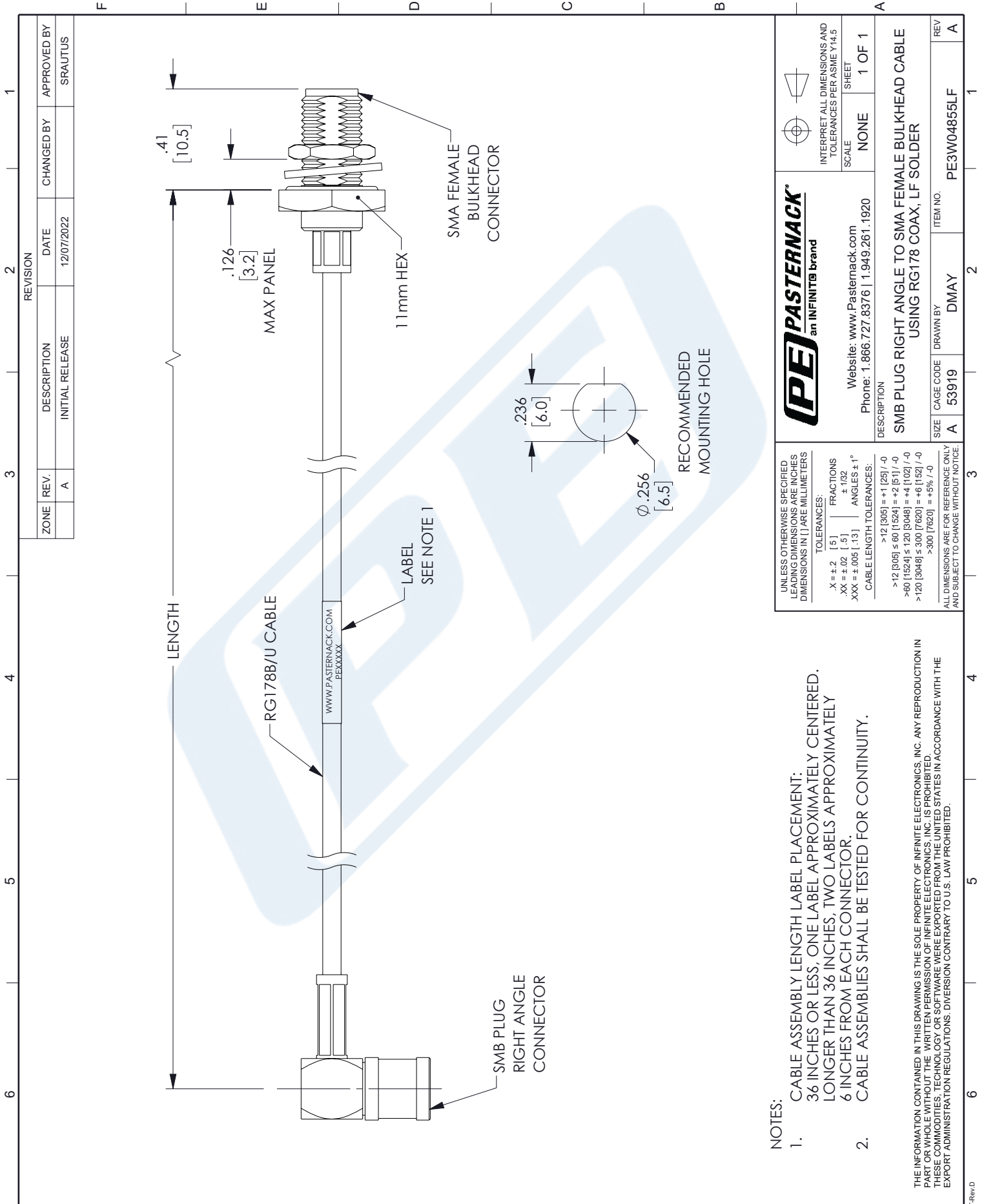
Click the following link (or enter part number in "SEARCH" on website) to obtain additional part information including price, inventory and certifications: [SMB Plug Right Angle to SMA Female Bulkhead Cable Using RG178 Coax , LF Solder PE3W04855LF](#)

URL: <https://www.pasternack.com/smb-plug-right-angle-to-sma-female-bulkhead-flexible-cable-using-rg178-lf-solder-pe3w04855lf-p.aspx>

The information contained in this document is accurate to the best of our knowledge and representative of the part described herein. It may be necessary to make modifications to the part and/or the documentation of the part, in order to implement improvements. Pasternack reserves the right to make such changes as required. Unless otherwise stated, all specifications are nominal. Pasternack does not make any representation or warranty regarding the suitability of the part described herein for any particular purpose, and Pasternack does not assume any liability arising out of the use of any part or documentation.

PE3W04855LF CAD Drawing

SMB Plug Right Angle to SMA Female Bulkhead Cable Using RG178 Coax , LF Solder



ZONE	REV.	DESCRIPTION	DATE	CHANGED BY	APPROVED BY
	A	INITIAL RELEASE	12/07/2022		SRAUTUS

PASTERNAK an INFINITI [®] brand		INTERPRET ALL DIMENSIONS AND TOLERANCES PER ASME Y14.5 SCALE: NONE SHEET: 1 OF 1
Website: www.Pasternack.com Phone: 1.866.727.8376 1.949.261.1920		DESCRIPTION: SMB PLUG RIGHT ANGLE TO SMA FEMALE BULKHEAD CABLE USING RG178 COAX, LF SOLDER
SIZE: A CAGE CODE: 53919 DRAWN BY: DMAY	ITEM NO.: PE3W04855LF	REV: A

UNLESS OTHERWISE SPECIFIED LEADING DIMENSIONS ARE INCHES DIMENSIONS IN [] ARE MILLIMETERS

TOLERANCES:

X = ±.2 [5] FRACTIONS
 .XX = ±.02 [.5] ±.1/32
 .XXX = ±.005 [.13] ANGLES ± 1°

CABLE LENGTH TOLERANCES:

>12 [305] = +1 [25] / -0
 >60 [1524] = +2 [51] / -0
 >120 [3048] = +4 [102] / -0
 >300 [7620] = +6 [152] / -0
 >300 [7620] = +5% / -0

ALL DIMENSIONS ARE FOR REFERENCE ONLY AND SUBJECT TO CHANGE WITHOUT NOTICE.

NOTES:

- CABLE ASSEMBLY LENGTH LABEL PLACEMENT: 36 INCHES OR LESS, ONE LABEL APPROXIMATELY CENTERED. LONGER THAN 36 INCHES, TWO LABELS APPROXIMATELY 6 INCHES FROM EACH CONNECTOR.
- CABLE ASSEMBLIES SHALL BE TESTED FOR CONTINUITY.

THE INFORMATION CONTAINED IN THIS DRAWING IS THE SOLE PROPERTY OF INFINITE ELECTRONICS, INC. ANY REPRODUCTION IN PART OR WHOLE WITHOUT THE WRITTEN PERMISSION OF INFINITE ELECTRONICS, INC. IS PROHIBITED. THESE COMMODITIES, TECHNOLOGY OR SOFTWARE WERE EXPORTED FROM THE UNITED STATES IN ACCORDANCE WITH THE EXPORT ADMINISTRATION REGULATIONS. DIVERSION CONTRARY TO U.S. LAW PROHIBITED.