

SMA Male to SMA Male Cable Using PE-SR405AL Coax



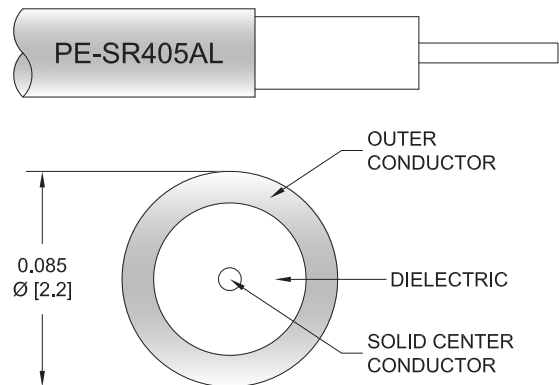
PE3W06027

Configuration

- Connector 1: SMA Male
- Connector 2: SMA Male
- Cable Type: PE-SR405AL
- Coax Flex Type: Semi-Rigid

Features

- Max Frequency 18 GHz



Applications

- General Purpose
- Laboratory Use

Description

Pasternack's PE3W06027 SMA male to SMA male cable using PE-SR405AL coax is part of our full line of RF components available for same-day shipping. Pasternack's semi-rigid RF cable assemblies are ideal for high performance applications and can be formed, using proper tooling, to the routing pattern required. This Pasternack SMA to SMA cable assembly has a male to male gender configuration with 50 ohm semi-rigid PE-SR405AL coax. The PE3W06027 SMA male to SMA male cable assembly operates to 18 GHz.

Custom versions of most RF cable assemblies can be built and shipped same day. Custom cable assembly lengths can be obtained by specifying the desired length on the web site at time of order or by contacting a sales representative. Other available RF cable assembly value added services include connector orientation or clocking, heat shrink booting and custom labeling. RF testing can also be performed to document the electrical performance of your cable assembly.

Electrical Specifications

Description	Minimum	Typical	Maximum	Units
Frequency Range	DC		18	
VSWR			1.4:1	

Specifications by Frequency

SMA Male to SMA Male Cable Using PE-SR405AL Coax



PE3W06027

Part Number	Length	Description	F1	F2	F3	F4	F5	Units	Weight (lbs)
			Frequency		1000	2000	4500	9000	
PE3W06027	Custom Lengths Available	Insertion Loss (Typ.)	0.23	0.27	0.44	0.74	1.21	dB/ft	
			0.76	0.89	1.45	2.43	3.97	dB/m	
PE3W06027-6	6 inch	Insertion Loss (Typ.)	0.32	0.34	0.42	0.57	0.81	dB	0.029
PE3W06027-12	12 inch	Insertion Loss (Typ.)	0.43	0.47	0.64	0.94	1.41	dB	0.036
PE3W06027-18	18 inch	Insertion Loss (Typ.)	0.55	0.61	0.86	1.31	2.02	dB	0.044
PE3W06027-24	24 inch	Insertion Loss (Typ.)	0.66	0.74	1.08	1.68	2.62	dB	0.051
PE3W06027-36	36 inch	Insertion Loss (Typ.)	0.89	1.01	1.52	2.42	3.83	dB	0.065

The insertion loss data for the base model does not include loss due to the connectors. Each length includes insertion loss due to the connectors.

Loss due to Connector 1:	0.1 dB
Loss due to Connector 2:	0.1 dB
Base Weight:	0.036 pounds
Additional Weight per Inch:	0.00117 pounds

Mechanical Specifications

Cable Assembly

Weight 0.036 lbs [16.33 g]

Cable

Cable Type	PE-SR405AL
Impedance	50 Ohms
Inner Conductor Type	Solid
Inner Conductor Material and Plating	Copper Clad Steel, Silver
Dielectric Type	PTFE
Number of Shields	1
Outer Conductor 1 Material and Plating	Tinned Aluminum
Repeated Minimum Bend Radius	0.05 in [1.27 mm]

SMA Male to SMA Male Cable Using PE-SR405AL Coax



PE3W06027

Connectors

Description	Connector 1	Connector 2
Type	SMA Male	SMA Male
Specification	MIL-STD-348A	MIL-STD-348A
Impedance	50 Ohms	50 Ohms
Configuration	Straight	Straight
Contact Material and Plating	Brass, Gold	Brass, Gold
Contact Plating Specification	50µ in. minimum	50µ in. minimum
Dielectric Type	Teflon	Teflon
Body Material and Plating	Brass, Gold	Brass, Gold
Body Plating Specification	3µ in. minimum	3µ in. minimum
Coupling Nut Material and Plating	Brass, Gold	Brass, Gold
Coupling Nut Plating Specification	3µ in. minimum	3µ in. minimum
Hex Size	5/16 Inch	5/16 Inch
Torque	3 in-lbs 0.34 Nm	3 in-lbs 0.34 Nm

Environmental Specifications

Operating Range Temperature -55 to +125 deg C

Compliance Certifications (see [product page](#) for current document)

Plotted and Other Data

Notes:

SMA Male to SMA Male Cable Using PE-SR405AL Coax



PE3W06027

Typical Performance Data

How to Order

Part Number Configuration:

PE3W06027

- **xx**

uu

Unit of Measure:

cm = Centimeters

<blank> = Inches

Length

Base Number

Example: PE3W06027-12 = 12 inches long cable
PE3W06027-100cm = 100 cm long cable

SMA Male to SMA Male Cable Using PE-SR405AL Coax from Pasternack Enterprises has same day shipment for domestic and International orders. Our RF, microwave and millimeter wave products maintain a 99.4% availability and are part of the broadest selection in the industry.

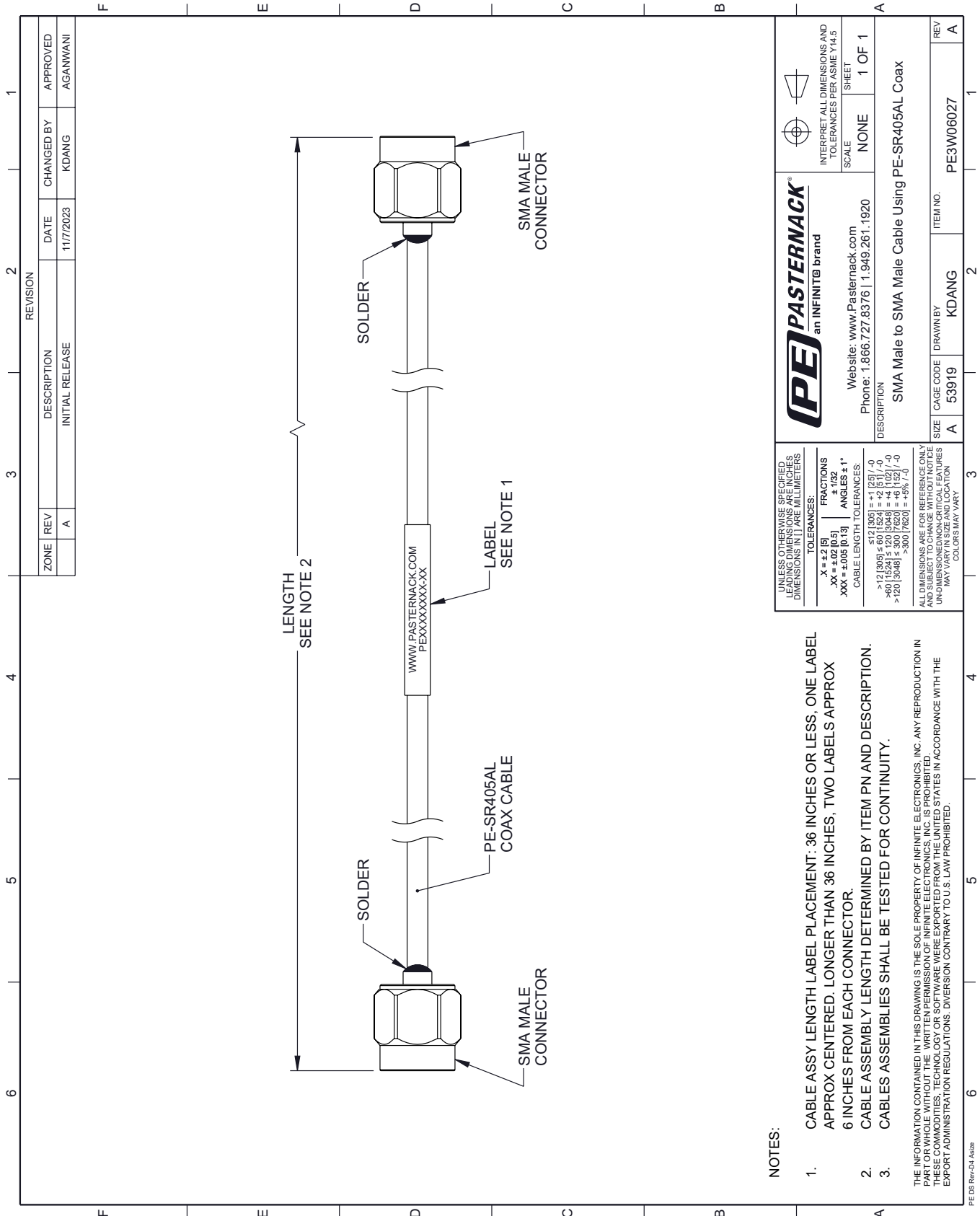
Click the following link (or enter part number in "SEARCH" on website) to obtain additional part information including price, inventory and certifications: [SMA Male to SMA Male Cable Using PE-SR405AL Coax PE3W06027](#)

URL: <https://www.pasternack.com/sma-male-to-sma-male-cable-using-pe-sr405al-pe3w06027-p.aspx>

The information contained within this document is accurate to the best of our knowledge and representative of the part described herein. It may be necessary to make modifications to the part and/or the documentation of the part in order to implement improvements. Pasternack Enterprises reserves the right to make such changes as required. Unless otherwise stated, all specifications are nominal. Pasternack Enterprises does not make any representation or warranty regarding the suitability of the part described herein for any particular purpose, and Pasternack Enterprises does not assume liability arising out of the use of any part or document.

PE3W06027 CAD Drawing

SMA Male to SMA Male Cable Using PE-SR405AL Coax



REVISION		DATE	CHANGED BY	APPROVED
ZONE	REV			
	A	11/7/2023	KDANG	AGANWANI
DESCRIPTION				
INITIAL RELEASE				

NOTES:

1. CABLE ASSY LENGTH LABEL PLACEMENT: .36 INCHES OR LESS, ONE LABEL APPROX CENTERED. LONGER THAN .36 INCHES, TWO LABELS APPROX .6 INCHES FROM EACH CONNECTOR.
2. CABLE ASSEMBLY LENGTH DETERMINED BY ITEM PN AND DESCRIPTION.
3. CABLE ASSEMBLIES SHALL BE TESTED FOR CONTINUITY.

THE INFORMATION CONTAINED IN THIS DRAWING IS THE SOLE PROPERTY OF INFINITE ELECTRONICS, INC. ANY REPRODUCTION IN PART OR WHOLE WITHOUT THE WRITTEN PERMISSION OF INFINITE ELECTRONICS, INC. IS PROHIBITED. THESE COMMODITIES, TECHNOLOGY OR SOFTWARE WERE EXPORTED FROM THE UNITED STATES IN ACCORDANCE WITH THE EXPORT ADMINISTRATION REGULATIONS. DIVERSION CONTRARY TO U.S. LAW PROHIBITED.

UNLESS OTHERWISE SPECIFIED, LEADING DIMENSIONS ARE IN INCHES. DIMENSIONS IN [] ARE MILLIMETERS.	TOLERANCES: .X = ±.2 [5] .XX = ±.02 [0.5] .XXX = ±.005 [0.13]	FRACTIONS ± 1/32 ANGLES ± 1°
ALL DIMENSIONS ARE FOR REFERENCE ONLY. UNDIMENSIONED NON-CRITICAL FEATURES MAY VARY IN SIZE AND LOCATION. COLORS MAY VARY.	CABLE LENGTH TOLERANCES: ≤ 12 [305] ± .60 [15.24] = ±.2 [5.1] / -0 > 12 [305] ≤ 60 [1524] = ±.4 [10.27] / -0 > 60 [1524] ≤ 120 [3048] = ±.4 [10.27] / -0 > 120 [3048] ≤ 300 [7620] = ±.5% [1.9] / -0	

(PE) PASTERNAK
an INFINITE brand

Website: www.Pasternack.com
Phone: 1.866.727.8376 | 1.949.261.1920

INTERPRET ALL DIMENSIONS AND TOLERANCES PER ASME Y14.5

SCALE: NONE

SHEET: 1 OF 1

DESCRIPTION: SMA Male to SMA Male Cable Using PE-SR405AL Coax

SIZE	CAGE CODE	DRAWN BY	ITEM NO.
A	53919	KDANG	PE3W06027