

## UHF Male to UHF Male Cable Using RG400 Coax, LF Solder



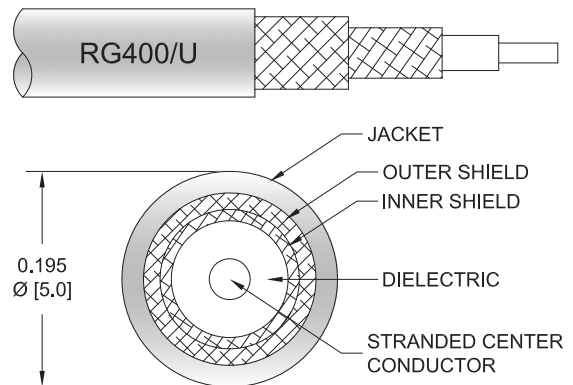
### PE3W06742LF

#### Configuration

- Connector 1: UHF Male
- Connector 2: UHF Male
- Cable Type: RG400
- Coax Flex Type: Flexible

#### Features

- Max Frequency 300 MHz
- 70% Phase Velocity
- Double Shielded
- FEP Jacket



#### Applications

- General Purpose
- Laboratory Use

#### Description

Pasternack's PE3W06742LF UHF male to UHF male cable using RG400 coax is part of our full line of RF components available for same-day shipping. Pasternack's flexible RF cable assemblies are ideal for applications where tight bends and flexure are required. This Pasternack UHF to UHF cable assembly has a male to male gender configuration with 50 ohm flexible RG400 coax. The PE3W06742LF UHF male to UHF male cable assembly operates to 300 MHz. The double shielding of this Pasternack cable assembly provides excellent shielding effectiveness.

Custom versions of most RF cable assemblies can be built and shipped same day. Custom cable assembly lengths can be obtained by specifying the desired length on the web site at time of order or by contacting a sales representative. Other available RF cable assembly value added services include connector orientation or clocking, heat shrink booting and custom labeling. RF testing can also be performed to document the electrical performance of your cable assembly.

#### Electrical Specifications

Description	Minimum	Typical	Maximum	Units
Frequency Range	DC		300	MHz
VSWR			1.4:1	
Velocity of Propagation		70		%
Capacitance		32 [104.99]		pF/ft [pF/m]
Operating Voltage (AC)			500	Vrms

#### Specifications by Frequency

## UHF Male to UHF Male Cable Using RG400 Coax, LF Solder



### PE3W06742LF

Part Number	Length	Description	F1	F2	F3	Units	Weight (lbs)
			Frequency	100	250	300	
PE3W06742LF	Custom Lengths Available	Insertion Loss (Typ.)	0.043	0.066	0.074	dB/ft	
			0.15	0.22	0.25	dB/m	
PE3W06742LF-6	6 In	Insertion Loss (Typ.)	0.23	0.24	0.24	dB	0.129
PE3W06742LF-12	12 In	Insertion Loss (Typ.)	0.25	0.27	0.28	dB	0.15
PE3W06742LF-24	24 In	Insertion Loss (Typ.)	0.29	0.34	0.35	dB	0.192
PE3W06742LF-36	36 In	Insertion Loss (Typ.)	0.33	0.4	0.43	dB	0.234
PE3W06742LF-72	72 In	Insertion Loss (Typ.)	0.46	0.6	0.65	dB	0.36

The insertion loss data for the base model does not include loss due to the connectors. Each length includes insertion loss due to the connectors.

Loss due to Connector 1:	0.1 dB
Loss due to Connector 2:	0.1 dB
Base Weight:	0.15 pounds
Additional Weight per Inch:	0.0035 pounds

### Mechanical Specifications

#### Cable Assembly

Width/Diameter	0.5 in [12.7 mm]
Weight	0.135 lbs [61.23 g]

#### Cable

Cable Type	RG400
Impedance	50 Ohms
Inner Conductor Type	Stranded
Inner Conductor Material and Plating	Copper, Silver
Dielectric Type	PTFE
Number of Shields	2
Shield Layer 1	Silver Plated Copper Braid
Shield Layer 2	Silver Plated Copper Braid
Jacket Material	FEP, Tan
Jacket Diameter	0.195 in [4.95 mm]
Repeated Minimum Bend Radius	1 in [25.4 mm]

## UHF Male to UHF Male Cable Using RG400 Coax, LF Solder



### PE3W06742LF

#### Connectors

Description	Connector 1	Connector 2
Type	UHF Male	UHF Male
Impedance	50 Ohms	50 Ohms
Configuration	Straight	Straight
Contact Material and Plating	Brass, Gold	Brass, Gold
Dielectric Type	PTFE	PTFE
Body Material and Plating	Brass, Nickel	Brass, Nickel
Body Plating Specification	100 µin minimum	100 µin minimum
Coupling Nut Material and Plating	Brass, Nickel	Brass, Nickel
Coupling Nut Plating Specification	100 µin minimum	100 µin minimum

#### Environmental Specifications

Operating Range Temperature -55 to +85 deg C

**Compliance Certifications** (see [product page](#) for current document)

#### Plotted and Other Data

Notes:

## UHF Male to UHF Male Cable Using RG400 Coax, LF Solder



### PE3W06742LF

#### Typical Performance Data

#### How to Order

Part Number Configuration:

**PE3W06742LF - xx uu**

Unit of Measure:  
cm = Centimeters  
<blank> = Inches

Length

Base Number

Example: PE3W06742LF-12 = 12 inches long cable  
PE3W06742LF-100cm = 100 cm long cable

UHF Male to UHF Male Cable Using RG400 Coax, LF Solder from Pasternack Enterprises has same day shipment for domestic and International orders. Our RF, microwave and millimeter wave products maintain a 99.4% availability and are part of the broadest selection in the industry.

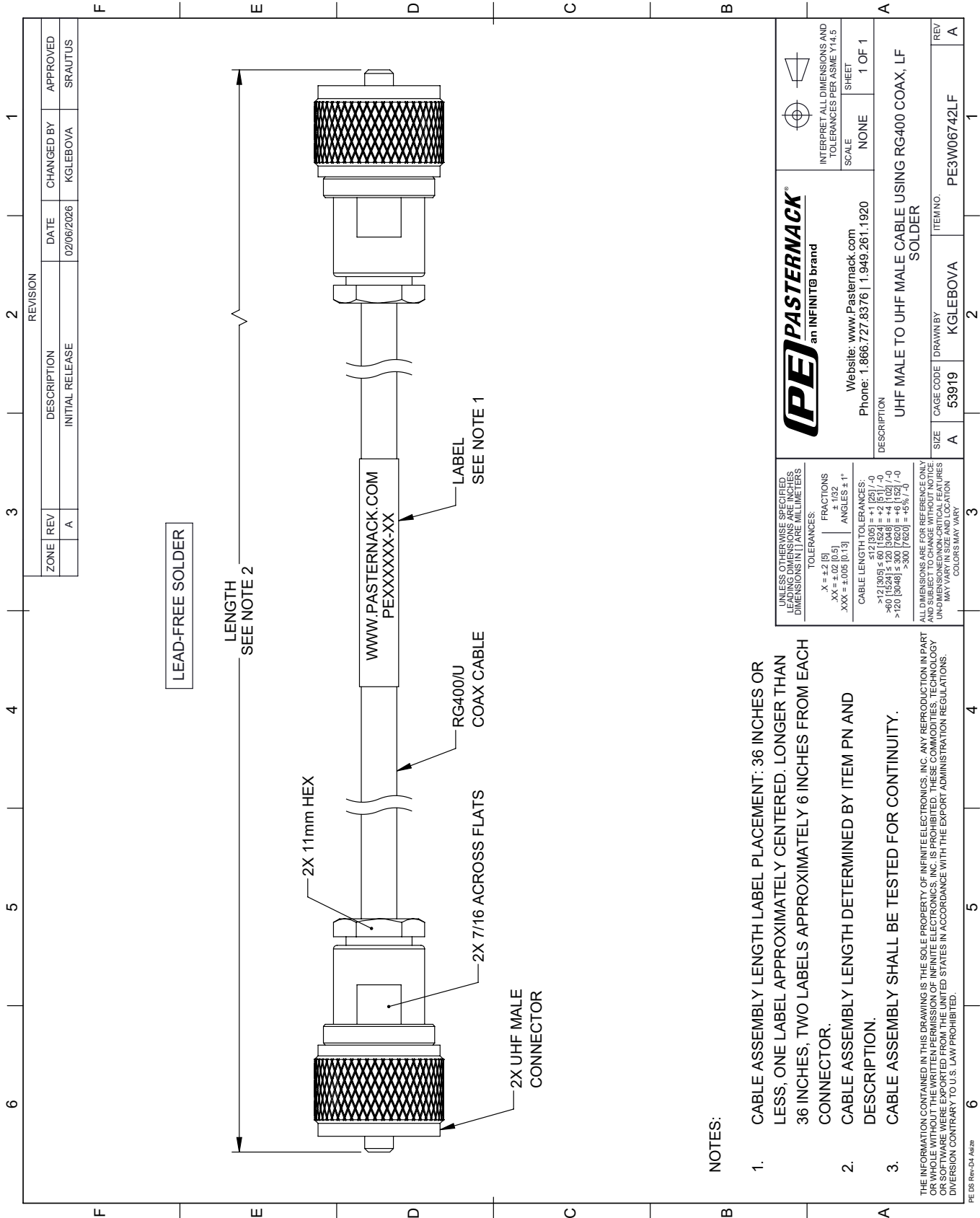
Click the following link (or enter part number in "SEARCH" on website) to obtain additional part information including price, inventory and certifications: [UHF Male to UHF Male Cable Using RG400 Coax, LF Solder PE3W06742LF](#)

URL: <https://www.pasternack.com/uhf-male-to-uhf-male-cable-using-rg400-lf-solder-pe3w06742lf-p.aspx>

The information contained within this document is accurate to the best of our knowledge and representative of the part described herein. It may be necessary to make modifications to the part and/or the documentation of the part in order to implement improvements. Pasternack Enterprises reserves the right to make such changes as required. Unless otherwise stated, all specifications are nominal. Pasternack Enterprises does not make any representation or warranty regarding the suitability of the part described herein for any particular purpose, and Pasternack Enterprises does not assume liability arising out of the use of any part or document.

# PE3W06742LF CAD Drawing


UHF Male to UHF Male Cable Using RG400 Coax, LF Solder



**NOTES:**

1. CABLE ASSEMBLY LABEL PLACEMENT: 36 INCHES OR LESS, ONE LABEL APPROXIMATELY CENTERED. LONGER THAN 36 INCHES, TWO LABELS APPROXIMATELY 6 INCHES FROM EACH CONNECTOR.
2. CABLE ASSEMBLY LENGTH DETERMINED BY ITEM PN AND DESCRIPTION.
3. CABLE ASSEMBLY SHALL BE TESTED FOR CONTINUITY.

THE INFORMATION CONTAINED IN THIS DRAWING IS THE SOLE PROPERTY OF INFINITE ELECTRONICS, INC. ANY REPRODUCTION IN PART OR WHOLE WITHOUT THE WRITTEN PERMISSION OF INFINITE ELECTRONICS, INC. IS PROHIBITED. THESE COMMODITIES, TECHNOLOGY OR SOFTWARE WERE EXPORTED FROM THE UNITED STATES IN ACCORDANCE WITH THE EXPORT ADMINISTRATION REGULATIONS. DIVERSION CONTRARY TO U.S. LAW PROHIBITED.

 <b>PASTERNAK</b> an INFINITE brand	Website: <a href="http://www.Pasternack.com">www.Pasternack.com</a> Phone: 1.866.727.8376   1.949.261.1920	INTERPRET ALL DIMENSIONS AND TOLERANCES PER ASME Y14.5 SCALE: NONE SHEET: 1 OF 1
	DESCRIPTION: UHF MALE TO UHF MALE CABLE USING RG400 COAX, LF SOLDER	
SIZE: A	CAGE CODE: 53919	DRAWN BY: KGLEBOVA
ITEM NO.: PE3W06742LF		REV: A

UNLESS OTHERWISE SPECIFIED, LEADING DIMENSIONS ARE IN INCHES. DIMENSIONS IN [ ] ARE MILLIMETERS.

TOLERANCES:

.X = ±.2 [5]	FRACTIONS ± 1/32
.XX = ±.02 [0.5]	ANGLES ± 1°
.XXX = ±.005 [0.13]	

CABLE LENGTH TOLERANCES:

<12 [305]	±.1 [25]
>12 [305] ≤ 60 [1524]	±.2 [51]
>60 [1524] ≤ 120 [3048]	±.4 [102]
>120 [3048]	±.8 [203]

ALL DIMENSIONS ARE FOR REFERENCE ONLY. DIMENSIONS OF NON-CRITICAL FEATURES MAY VARY IN SIZE AND LOCATION. COLORS MAY VARY.