

## Reverse Polarity SMA Plug Right Angle to Reverse Polarity SMA Jack Cable Using RG142 Coax with HeatShrink



### PE3W07682/HS

#### Configuration

- Connector 1: SMA Plug Reverse Polarity Right Angle
- Connector 2: SMA Jack Reverse Polarity
- Cable Type: RG142
- Coax Flex Type: Flexible

#### Features

- Shielding Effectivity > 70 dB
- 70% Phase Velocity
- Double Shielded
- FEP Jacket



#### Applications

- General Purpose
- Laboratory Use

#### Description

Pasternack's PE3W07682/HS reverse polarity SMA plug right angle to reverse polarity SMA jack cable using RG142 coax is part of our full line of RF components available for same-day shipping. Pasternack's flexible RF cable assemblies are ideal for applications where tight bends and flexure are required. This Pasternack reverse polarity SMA to reverse polarity SMA cable assembly has a plug to jack gender configuration with 50 ohm flexible RG142 coax. The right angle SMA interface on the RG142 cable allows for easier connections in tight spaces. The double shielding of this Pasternack cable assembly provides excellent shielding effectiveness of better than 70 dB.

Custom versions of most RF cable assemblies can be built and shipped same day. Custom cable assembly lengths can be obtained by specifying the desired length on the web site at time of order or by contacting a sales representative. Other available RF cable assembly value added services include connector orientation or clocking, heat shrink booting and custom labeling. RF testing can also be performed to document the electrical performance of your cable assembly.

#### Electrical Specifications

Description	Minimum	Typical	Maximum	Units
Velocity of Propagation		70		%
RF Shielding	70			dB
Capacitance		96.45 [316.44]		pF/ft [pF/m]
DC Resistance Inner Conductor		65 [213.25]		Ohms/1000ft [Ohms/Km]
DC Resistance Outer Conductor		9 [29.53]		Ohms/1000ft [Ohms/Km]

#### Mechanical Specifications

##### Cable Assembly

Width/Diameter	0.5 in [12.7 mm]
Weight	0.025 lbs [11.34 g]

## Reverse Polarity SMA Plug Right Angle to Reverse Polarity SMA Jack Cable Using RG142 Coax with HeatShrink



### PE3W07682/HS

#### Cable

Cable Type	RG142
Impedance	50 Ohms
Inner Conductor Type	Solid
Inner Conductor Material and Plating	Copper Clad Steel, Silver
Dielectric Type	PTFE
Number of Shields	2
Shield Layer 1	Silver Plated Copper Braid
Shield Layer 2	Silver Plated Copper Braid
Jacket Material	FEP, Tan
Jacket Diameter	0.195 in [4.95 mm]
One Time Minimum Bend Radius	0.98 in [24.89 mm]
Repeated Minimum Bend Radius	1.97 in [50.04 mm]

#### Connectors

Description	Connector 1	Connector 2
Type	SMA Plug Reverse Polarity Right Angle	SMA Jack Reverse Polarity
Specification		MIL-STD-348
Impedance	50 Ohms	50 Ohms
Configuration	Right Angle	Straight
Contact Material and Plating	Beryllium Copper, Gold	Gold
Contact Plating Specification		MIL-G-45204
Dielectric Type	PTFE	PTFE
Body Material and Plating	Brass, Nickel	Brass, Nickel
Body Plating Specification		QQ-N-290
Coupling Nut Material and Plating	Brass, Nickel	
Hex Size	5/16 inch	
Torque	3 in-lbs 0.34 Nm	

#### Environmental Specifications

**Compliance Certifications** (see [product page](#) for current document)

#### Plotted and Other Data

Notes:

## Reverse Polarity SMA Plug Right Angle to Reverse Polarity SMA Jack Cable Using RG142 Coax with HeatShrink



### PE3W07682/HS

#### Typical Performance Data

#### How to Order

Part Number Configuration:

**PE3W07682/HS**

**- xx**

**uu**

Unit of Measure:

cm = Centimeters

<blank> = Inches

Length

Base Number

Example: PE3W07682/HS-12 = 12 inches long cable  
PE3W07682/HS-100cm = 100 cm long cable

Reverse Polarity SMA Plug Right Angle to Reverse Polarity SMA Jack Cable Using RG142 Coax with HeatShrink from Pasternack Enterprises has same day shipment for domestic and International orders. Our RF, microwave and millimeter wave products maintain a 99.4% availability and are part of the broadest selection in the industry.

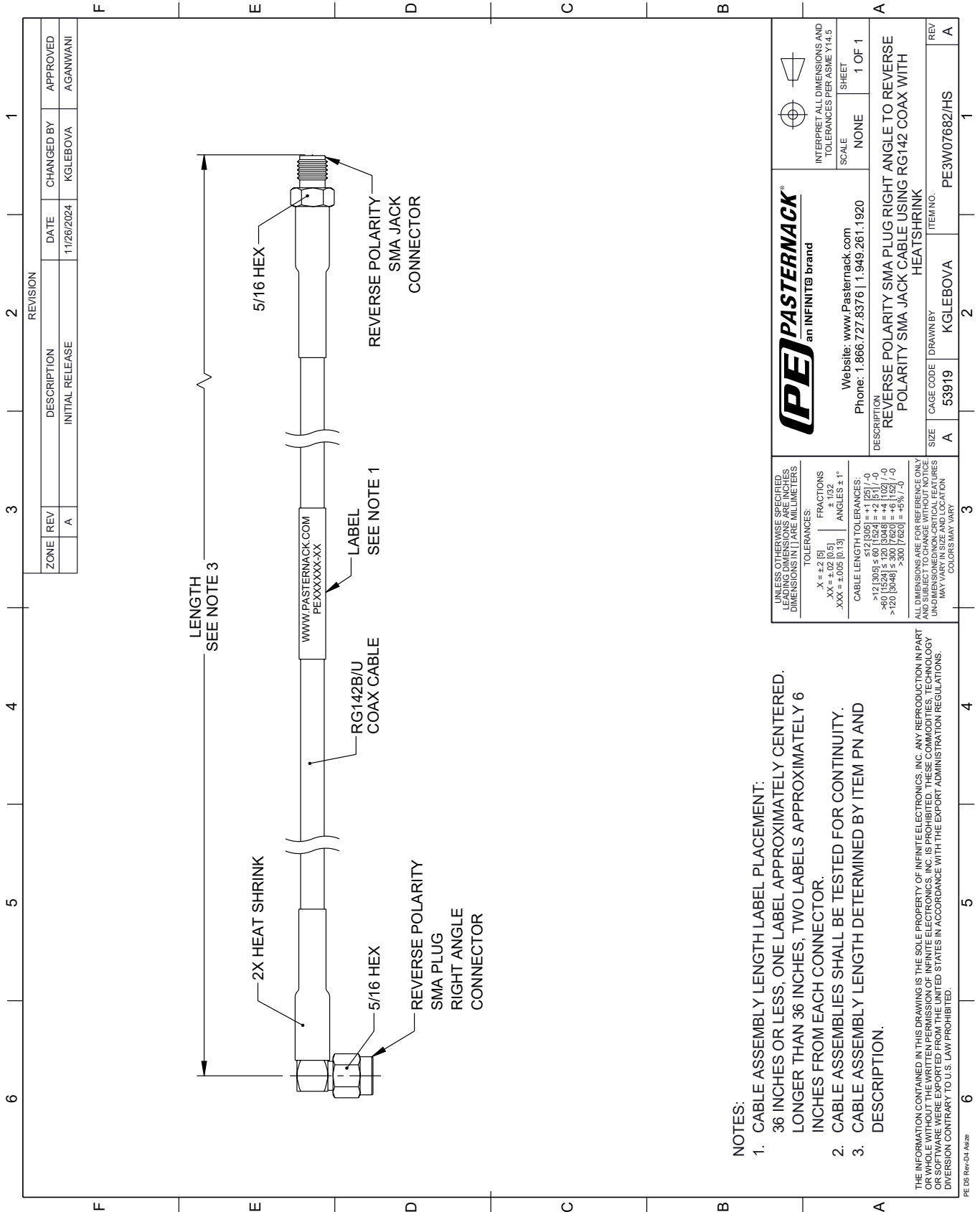
Click the following link (or enter part number in "SEARCH" on website) to obtain additional part information including price, inventory and certifications: [Reverse Polarity SMA Plug Right Angle to Reverse Polarity SMA Jack Cable Using RG142 Coax with HeatShrink PE3W07682/HS](https://www.pasternack.com/reverse-polarity-sma-plug-right-angle-to-reverse-polarity-sma-jack-cable-using-rg142-coax-with-heatshrink-pe3w07682-hs)

URL: <https://www.pasternack.com/reverse-polarity-sma-plug-right-angle-to-reverse-polarity-sma-jack-cable-using-rg142-with-heatshrink-pe3w07682-hs-p.aspx>

The information contained within this document is accurate to the best of our knowledge and representative of the part described herein. It may be necessary to make modifications to the part and/or the documentation of the part in order to implement improvements. Pasternack Enterprises reserves the right to make such changes as required. Unless otherwise stated, all specifications are nominal. Pasternack Enterprises does not make any representation or warranty regarding the suitability of the part described herein for any particular purpose, and Pasternack Enterprises does not assume liability arising out of the use of any part or document.

# PE3W07682/HS CAD Drawing

Reverse Polarity SMA Plug Right Angle to Reverse Polarity SMA Jack Cable Using RG142 Coax with HeatShrink



**NOTES:**

1. CABLE ASSEMBLY LENGTH LABEL PLACEMENT: 36 INCHES OR LESS, ONE LABEL APPROXIMATELY CENTERED. LONGER THAN 36 INCHES, TWO LABELS APPROXIMATELY 6 INCHES FROM EACH CONNECTOR.
2. CABLE ASSEMBLIES SHALL BE TESTED FOR CONTINUITY.
3. CABLE ASSEMBLY LENGTH DETERMINED BY ITEM PN AND DESCRIPTION.

THE INFORMATION CONTAINED IN THIS DRAWING IS THE SOLE PROPERTY OF INFINITE ELECTRONICS, INC. ANY REPRODUCTION IN PART OR WHOLE WITHOUT THE WRITTEN PERMISSION OF INFINITE ELECTRONICS, INC. IS PROHIBITED. THESE COMMODITIES, TECHNOLOGY OR SOFTWARE ARE EXPORTED FROM THE UNITED STATES IN ACCORDANCE WITH THE EXPORT ADMINISTRATION REGULATIONS. DIVERSION CONTRARY TO U.S. LAW PROHIBITED.

PE DS Rev-04 Add2

REVISION		DATE	CHANGED BY	APPROVED
ZONE	REV			
	A	11/26/2024	KGLEBOVA	AGANWANI
DESCRIPTION				
INITIAL RELEASE				

**UNLESS OTHERWISE SPECIFIED, LEADING DIMENSIONS ARE IN INCHES. DIMENSIONS IN [ ] ARE MILLIMETERS.**

**TOLERANCES:**

.X = ±.2 [5]      FRACTIONS ± 1/32

.XX = ±.02 [0.5]      ANGLES ± 1°

.XXX = ±.005 [0.13]

**CABLE LENGTH TOLERANCES:**

>12 [305] ≤ 60 [1524] = ±.2 [5] / -0

>60 [1524] ≤ 120 [3048] = ±.4 [102] / -0

>120 [3048] ≤ 300 [7620] = ±.6 [15] / -0

**ALL DIMENSIONS ARE FOR REFERENCE ONLY. UNDIMENSIONED/NON-CRITICAL FEATURES MAY VARY IN SIZE AND LOCATION. COLORS MAY VARY.**

**PE PASTERNAK**  
an INFINITE brand

Website: [www.Pasternack.com](http://www.Pasternack.com)  
Phone: 1.866.727.8376 | 1.949.261.1920

INTERPRET ALL DIMENSIONS AND TOLERANCES PER ASME Y14.5

SCALE: NONE      SHEET: 1 OF 1

DESCRIPTION		REVERSE POLARITY SMA PLUG RIGHT ANGLE TO REVERSE POLARITY SMA JACK CABLE USING RG142 COAX WITH HEATSHRINK	
SIZE	A	CAGE CODE	53919
DRAWN BY	KGLEBOVA	ITEM NO.	PE3W07682/HS
REV	A		