

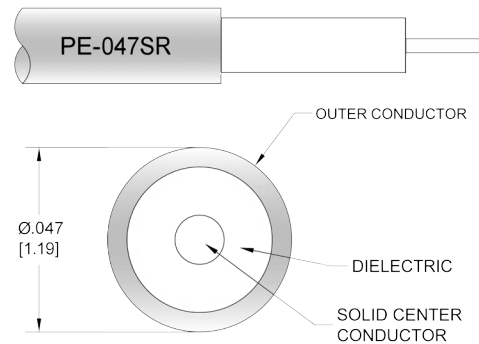
SSMA Male to SMP Female Cable Using PE-047SR Coax

PE3W07992



Configuration

- Connector 1: SSMA Male
- Connector 2: SMP Female
- Cable Type: PE-047SR
- Coax Flex Type: Semi-Rigid



Applications

- General Purpose
- Laboratory Use

Description

Pasternack's PE3W07992 SSMA male to SMP female cable using PE-047SR coax is part of our full line of RF components available for same-day shipping. Pasternack's semi-rigid RF cable assemblies are ideal for high performance applications and can be formed, using proper tooling, to the routing pattern required. This Pasternack SSMA to SMP cable assembly has a male to female gender configuration with 50 ohm semi-rigid PE-047SR coax.

Custom versions of most RF cable assemblies can be built and shipped same day. Custom cable assembly lengths can be obtained by specifying the desired length on the web site at time of order or by contacting a sales representative. Other available RF cable assembly value added services include connector orientation or clocking, heat shrink booting and custom labeling. RF testing can also be performed to document the electrical performance of your cable assembly.

Mechanical Specifications

Cable Assembly

Width/Diameter	0.5 in [12.7 mm]
Weight	0.01 lbs [4.54 g]

Cable

Cable Type	PE-047SR
Impedance	50 Ohms
Inner Conductor Type	Solid
Inner Conductor Material and Plating	Copper Clad Steel, Silver
Dielectric Type	PTFE
Number of Shields	1
Outer Conductor 1 Material and Plating	Copper
Repeated Minimum Bend Radius	0.05 in [1.27 mm]

SSMA Male to SMP Female Cable Using PE-047SR Coax



PE3W07992

Connectors

Description	Connector 1	Connector 2
Type	SSMA Male	SMP Female
Specification	MIL-STD-348	MIL-STD-348A
Impedance	50 Ohms	50 Ohms
Configuration	Straight	Straight
Contact Material and Plating	Gold	Beryllium Copper, Gold
Contact Plating Specification	MIL-G-45204	MIL-DTL-45204
Dielectric Type	PTFE	PTFE
Body Material and Plating	Brass, Gold	Beryllium Copper, Gold
Body Plating Specification	MIL-G-45204	MIL-DTL-45204
Coupling Nut Material and Plating	Brass, Nickel	
Coupling Nut Plating Specification	QQ-N-290	
Hex Size	1/4 inch	
Torque	3 in-lbs 0.34 Nm	

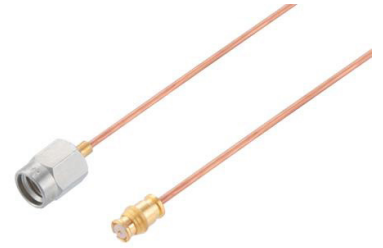
Environmental Specifications

Compliance Certifications (see [product page](#) for current document)

Plotted and Other Data

Notes:

SSMA Male to SMP Female Cable Using PE-047SR Coax



PE3W07992

Typical Performance Data

How to Order

Part Number Configuration:

PE3W07992

- XX

uu

- Unit of Measure:
cm = Centimeters
<blank> = Inches

- Length

- Base Number

Example: PE3W07992-12 = 12 inches long cable
PE3W07992-100cm = 100 cm long cable

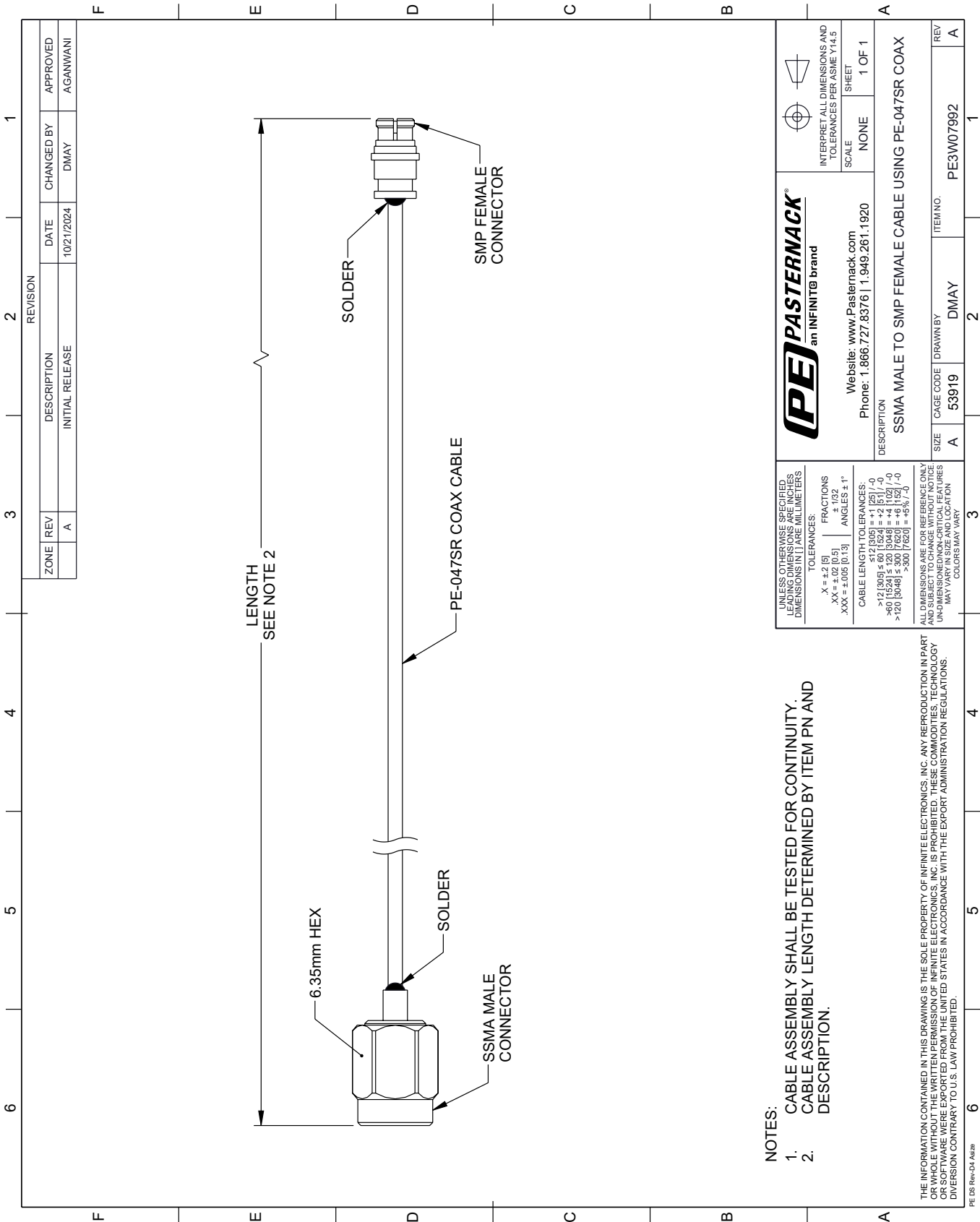
SSMA Male to SMP Female Cable Using PE-047SR Coax from Pasternack Enterprises has same day shipment for domestic and International orders. Our RF, microwave and millimeter wave products maintain a 99.4% availability and are part of the broadest selection in the industry.

Click the following link (or enter part number in "SEARCH" on website) to obtain additional part information including price, inventory and certifications: [SSMA Male to SMP Female Cable Using PE-047SR Coax PE3W07992](#)

URL: <https://www.pasternack.com/ssma-male-to-smp-female-cable-using-pe-047sr-pe3w07992-p.aspx>

The information contained within this document is accurate to the best of our knowledge and representative of the part described herein. It may be necessary to make modifications to the part and/or the documentation of the part in order to implement improvements. Pasternack Enterprises reserves the right to make such changes as required. Unless otherwise stated, all specifications are nominal. Pasternack Enterprises does not make any representation or warranty regarding the suitability of the part described herein for any particular purpose, and Pasternack Enterprises does not assume liability arising out of the use of any part or document.

PE3W07992 CAD Drawing
SSMA Male to SMP Female Cable Using PE-047SR Coax



- NOTES:
- 1. CABLE ASSEMBLY SHALL BE TESTED FOR CONTINUITY.
 - 2. CABLE ASSEMBLY LENGTH DETERMINED BY ITEM PN AND DESCRIPTION.

UNLESS OTHERWISE SPECIFIED, LEADING DIMENSIONS ARE IN INCHES, TRAILING DIMENSIONS ARE IN MILLIMETERS		PE PASTERNAK an INFINITE® brand		INTERPRET ALL DIMENSIONS AND TOLERANCES PER ASME Y14.5	
TOLERANCES:		Website: www.Pasternack.com		SCALE	
X = ±.2 [5]		Phone: 1.866.727.8376 1.949.261.1920		NONE	
.XX = ±.02 [0.5]		CABLE LENGTH TOLERANCES:		SHEET	
.XXX = ±.005 [0.13]		>12 [305] ≤ 60 [1524] = ±1 [25] / -0		1 OF 1	
ANGLES ± 1°		>60 [1524] ≤ 120 [3048] = ±4 [102] / -0		DESCRIPTION	
ALL DIMENSIONS ARE FOR REFERENCE ONLY. UNLESS OTHERWISE SPECIFIED, DIMENSIONS MAY VARY IN SIZE AND LOCATION. COLORS MAY VARY.		>120 [3048] ≤ 300 [7620] = ±5% / -0		SSMA MALE TO SMP FEMALE CABLE USING PE-047SR COAX	
SIZE		CAGE CODE		ITEM NO.	
A		53919		PE3W07992	
DRAWN BY		REV		A	
DMAY		REV		A	