



SMA Male Right Angle to QMA Male Right Angle
Cable Using RG316 Coax with 90 Deg. Clock

RF Cable Assemblies Technical Data Sheet

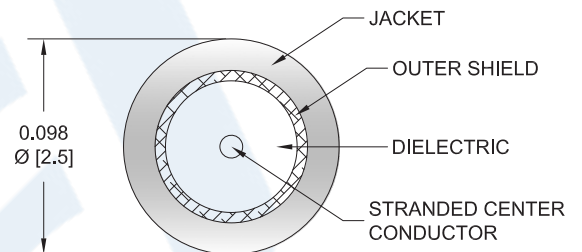
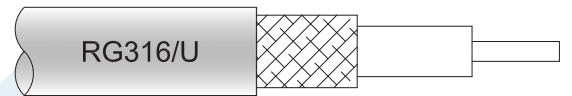
PE3W08515/PH90

Configuration

- Connector 1: SMA Male Right Angle
- Connector 2: QMA Male Right Angle
- Cable Type: RG316

Features

- Max Frequency 3 GHz
- 69% Phase Velocity
- FEP Jacket



Applications

- General Purpose
- Laboratory Use

Description

Pasternack's PE3W08515/PH90 SMA male right angle to QMA male right angle cable using RG316 coax is part of our full line of RF components available for same-day shipping. Pasternack's flexible RF cable assemblies are ideal for applications where tight bends and flexure are required. This Pasternack SMA to QMA cable assembly has a male to male gender configuration with 50 ohm flexible RG316 coax. The PE3W08515/PH90 SMA male to QMA male cable assembly operates to 3 GHz. The right angle SMA and right angle QMA interfaces on the RG316 cable allow for easier connections in tight spaces.

Custom versions of most RF cable assemblies can be built and shipped same day. Custom cable assembly lengths can be obtained by specifying the desired length on the web site at time of order or by contacting a sales representative. Other available RF cable assembly value added services include connector orientation or clocking, heat shrink booting and custom labeling. RF testing can also be performed to document the electrical performance of your cable assembly.

Click the following link (or enter part number in "SEARCH" on website) to obtain additional part information including price, inventory and certifications: [SMA Male Right Angle to QMA Male Right Angle Cable Using RG316 Coax with 90 Deg. Clock PE3W08515/PH90](#)



SMA Male Right Angle to QMA Male Right Angle
Cable Using RG316 Coax with 90 Deg. Clock

RF Cable Assemblies Technical Data Sheet

PE3W08515/PH90

Electrical Specifications

Description	Minimum	Typical	Maximum	Units
Frequency Range	DC		3	GHz
VSWR			1.4:1	
Velocity of Propagation		69		%
Capacitance		29.4 [96.46]		pF/ft [pF/m]
Operating Voltage (DC)			900	Vdc
Dielectric Withstanding Voltage (AC)			2,000	Vrms
Jacket Spark			2,000	Vrms

Specifications by Frequency

Description	F1	F2	F3	F4	F5	Units
Frequency	0.1	0.25	0.5	1	3	GHz
Insertion Loss (Typ.)	0.11	0.16	0.238	0.38	0.58	dB/ft
	0.36	0.52	0.78	1.25	1.9	

Electrical Specification Notes:

Insertion Loss does not include the loss of the connectors. Insertion Loss is estimated as 0.2 dB for the Right Angle connector.

Mechanical Specifications

Cable Assembly

Weight 0.102 lbs [46.27 g]

Cable

Cable Type RG316
 Impedance 50 Ohms
 Inner Conductor Type Stranded
 Inner Conductor Material and Plating Copper Clad Steel, Silver
 Dielectric Type PTFE
 Number of Shields 1
 Shield Layer 1 Silver Plated Copper
 Jacket Material FEP, Beige
 Jacket Diameter 0.102 in [2.59 mm]

Click the following link (or enter part number in "SEARCH" on website) to obtain additional part information including price, inventory and certifications: [SMA Male Right Angle to QMA Male Right Angle Cable Using RG316 Coax with 90 Deg. Clock PE3W08515/PH90](#)



SMA Male Right Angle to QMA Male Right Angle
Cable Using RG316 Coax with 90 Deg. Clock

RF Cable Assemblies Technical Data Sheet

PE3W08515/PH90

Connectors

Description	Connector 1	Connector 2
Type	SMA Male Right Angle	QMA Male Right Angle
Specification	MIL-STD-348	
Impedance	50 Ohms	50 Ohms
Contact Material and Plating	Brass, Gold	Brass, Gold
Contact Plating Specification	50 µin minimum	
Dielectric Type	PTFE	PTFE
Body Material and Plating	Brass, Nickel	Brass, Tri-Metal
Body Plating Specification	100 µin minimum	
Coupling Nut Material and Plating	Brass, Nickel	Brass, Nickel
Coupling Nut Plating Specification	100 µin minimum	
Hex Size	5/16 inch	

Environmental Specifications

Temperature

Operating Range -55 to +105 deg C

Compliance Certifications (see [product page](#) for current document)

Plotted and Other Data

Notes:

Click the following link (or enter part number in "SEARCH" on website) to obtain additional part information including price, inventory and certifications: [SMA Male Right Angle to QMA Male Right Angle Cable Using RG316 Coax with 90 Deg. Clock PE3W08515/PH90](#)



SMA Male Right Angle to QMA Male Right Angle
Cable Using RG316 Coax with 90 Deg. Clock

RF Cable Assemblies Technical Data Sheet

PE3W08515/PH90

How to Order

Part Number Configuration:

PE3W08515/PH90

- **xx**

uu

Unit of Measure:

cm = Centimeters

<blank> = Inches

Length

Base Number

Example: PE3W08515/PH90-12 = 12 inches long cable
PE3W08515/PH90-100cm = 100 cm long cable

SMA Male Right Angle to QMA Male Right Angle Cable Using RG316 Coax with 90 Deg. Clock from Pasternack Enterprises has same day shipment for domestic and International orders. Our RF, microwave and millimeter wave products maintain a 99.4% availability and are part of the broadest selection in the industry.

Click the following link (or enter part number in "SEARCH" on website) to obtain additional part information including price, inventory and certifications: [SMA Male Right Angle to QMA Male Right Angle Cable Using RG316 Coax with 90 Deg. Clock PE3W08515/PH90](https://www.pasternack.com/sma-male-right-angle-to-qma-male-right-angle-cable-using-rg316-with-90-deg.-clock-pe3w08515-ph90)

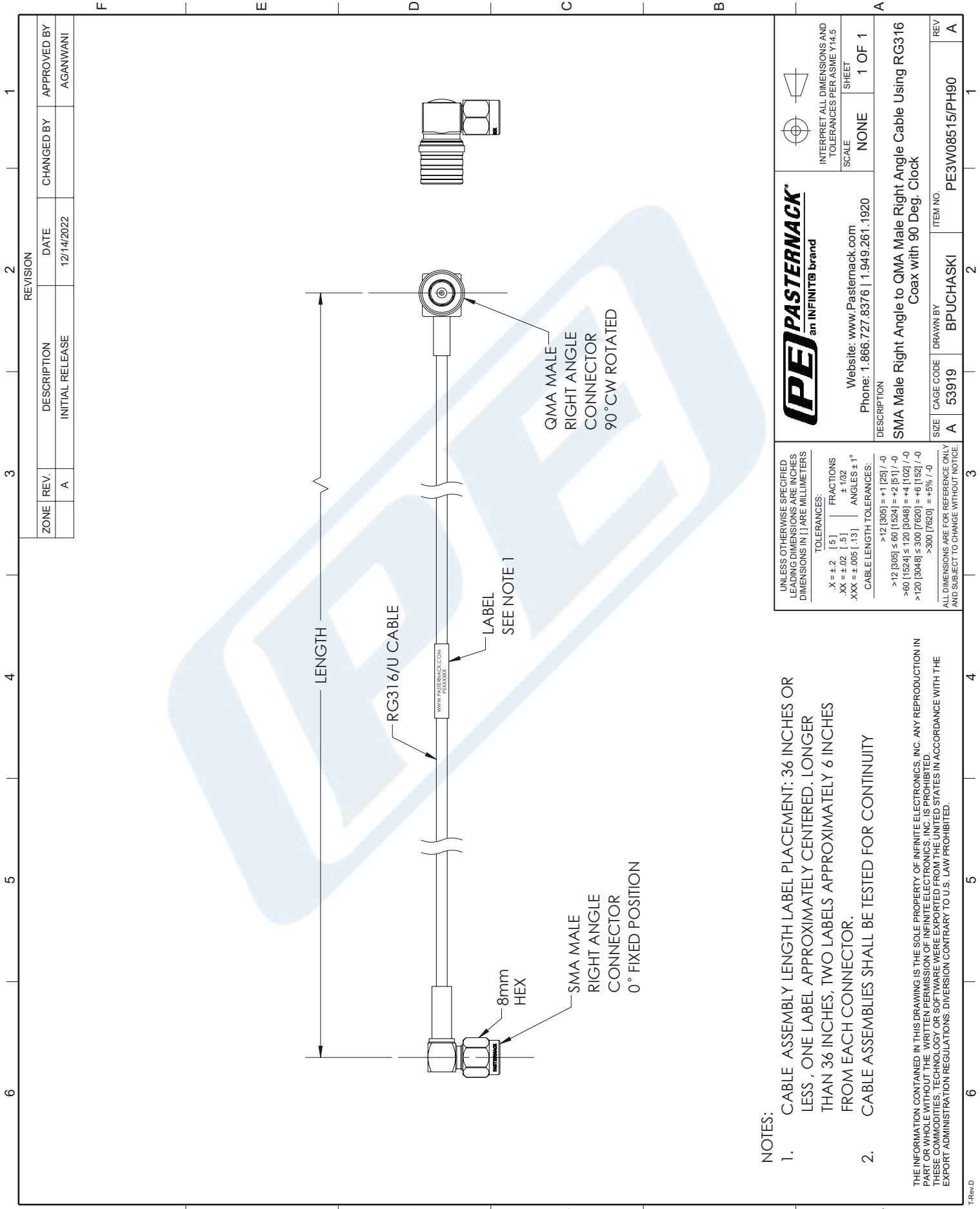
URL: <https://www.pasternack.com/sma-male-right-angle-to-qma-male-cable-using-rg316-with-90-deg.-clock-pe3w08515-ph90-p.aspx>

The information contained in this document is accurate to the best of our knowledge and representative of the part described herein. It may be necessary to make modifications to the part and/or the documentation of the part, in order to implement improvements. Pasternack reserves the right to make such changes as required. Unless otherwise stated, all specifications are nominal. Pasternack does not make any representation or warranty regarding the suitability of the part described herein for any particular purpose, and Pasternack does not assume any liability arising out of the use of any part or documentation.

PE3W08515/PH90 CAD Drawing

SMA Male Right Angle to QMA Male Right Angle Cable

Using RG316 Coax with 90 Deg. Clock



NOTES:

1. CABLE ASSEMBLY LENGTH LABEL PLACEMENT: 36 INCHES OR LESS, ONE LABEL APPROXIMATELY CENTERED. LONGER THAN 36 INCHES, TWO LABELS APPROXIMATELY 6 INCHES FROM EACH CONNECTOR.
2. CABLE ASSEMBLIES SHALL BE TESTED FOR CONTINUITY

THE INFORMATION CONTAINED IN THIS DRAWING IS THE SOLE PROPERTY OF INFINITE ELECTRONICS, INC. ANY REPRODUCTION IN PART OR WHOLE WITHOUT THE WRITTEN PERMISSION OF INFINITE ELECTRONICS, INC. IS PROHIBITED. THESE COMMODITIES, TECHNOLOGY OR SOFTWARE WERE EXPORTED FROM THE UNITED STATES IN ACCORDANCE WITH THE EXPORT ADMINISTRATION REGULATIONS. DIVERSION CONTRARY TO U.S. LAW PROHIBITED.

UNLESS OTHERWISE SPECIFIED LEADING DIMENSIONS ARE INCHES DIMENSIONS IN [] ARE MILLIMETERS	
TOLERANCES:	
.X = ±.2 [.5]	FRACTIONS ± 1/32
.XX = ±.02 [.5]	ANGLES ± 1°
.XXX = ±.005 [.13]	CABLE LENGTH TOLERANCES:
	>12 [305] = +1 [25] / -0
	>12 [305] ≤ 60 [1524] = +2 [51] / -0
	>60 [1524] ≤ 120 [3048] = +4 [102] / -0
	>120 [3048] ≤ 300 [7620] = +6 [152] / -0
	>300 [7620] = +5% / -0
ALL DIMENSIONS ARE FOR REFERENCE ONLY AND SUBJECT TO CHANGE WITHOUT NOTICE.	

PE PASTERNAK an INFINITB brand		INTERPRET ALL DIMENSIONS AND TOLERANCES PER ASME Y14.5	
Website: www.Pasternack.com		SCALE	SHEET
Phone: 1.866.727.8376 1.949.261.1920		NONE	1 OF 1
DESCRIPTION SMA Male Right Angle to QMA Male Right Angle Cable Using RG316 Coax with 90 Deg. Clock			
SIZE	CAGE CODE	DRAWN BY	ITEM NO.
A	53919	BPUCHASKI	PE3W08515/PH90
REV			REV
A			A