



SSMC Plug to SMA Female Bulkhead Cable Using RG316 Coax with HeatShrink, LF Solder

RF Cable Assemblies Technical Data Sheet

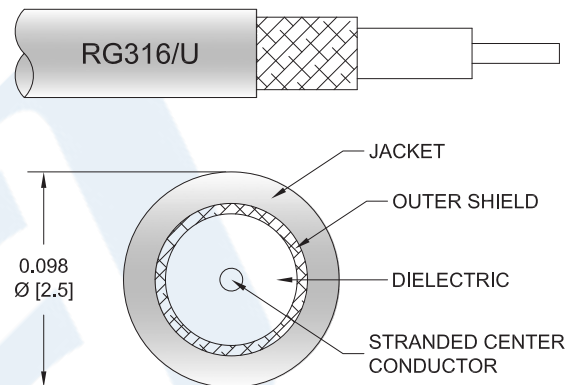
PE3W08550LF/HS

Configuration

- Connector 1: SSMC Plug
- Connector 2: SMA Female Bulkhead
- Cable Type: RG316

Features

- Max Frequency 3 GHz
- 69% Phase Velocity
- FEP Jacket



Applications

- General Purpose
- Laboratory Use

Description

Pasternack's PE3W08550LF/HS SSMC plug to SMA female bulkhead cable using RG316 coax is part of our full line of RF components available for same-day shipping. Pasternack's flexible RF cable assemblies are ideal for applications where tight bends and flexure are required. This Pasternack SSMC to SMA cable assembly has a plug to female gender configuration with 50 ohm flexible RG316 coax. The PE3W08550LF/HS SSMC plug to SMA female cable assembly operates to 3 GHz. Our RF cable assembly with SMA bulkhead interface allows designers to create external connections on their product enclosures, and can be used in a variety of other rack mount and panel mount applications.

Custom versions of most RF cable assemblies can be built and shipped same day. Custom cable assembly lengths can be obtained by specifying the desired length on the web site at time of order or by contacting a sales representative. Other available RF cable assembly value added services include connector orientation or clocking, heat shrink booting and custom labeling. RF testing can also be performed to document the electrical performance of your cable assembly.

Click the following link (or enter part number in "SEARCH" on website) to obtain additional part information including price, inventory and certifications: [SSMC Plug to SMA Female Bulkhead Cable Using RG316 Coax with HeatShrink, LF Solder PE3W08550LF/HS](#)



SSMC Plug to SMA Female Bulkhead Cable Using RG316 Coax with HeatShrink, LF Solder

RF Cable Assemblies Technical Data Sheet

PE3W08550LF/HS

Electrical Specifications

Description	Minimum	Typical	Maximum	Units
Frequency Range	DC		3	GHz
VSWR			1.4:1	
Velocity of Propagation		69		%
Jacket Spark			2,000	Vrms

Specifications by Frequency

Description	F1	F2	F3	F4	F5	Units
Frequency	0.1	0.25	0.5	1	3	GHz
Insertion Loss (Typ.)	0.11	0.16	0.23	0.38	0.58	dB/ft
	0.36	0.52	0.75	1.25	1.9	dB/m

Electrical Specification Notes:

Insertion Loss does not include the loss of the connectors. Insertion Loss is estimated as 0.1 dB per connector.

Mechanical Specifications

Cable Assembly

Weight 0.026 lbs [11.79 g]

Cable

Cable Type RG316
 Impedance 50 Ohms
 Inner Conductor Type Stranded
 Inner Conductor Material and Plating Copper Clad Steel, Silver
 Dielectric Type PTFE
 Number of Shields 1
 Shield Layer 1 Silver Plated Copper Braid
 Jacket Material FEP, Tan
 Jacket Diameter 0.102 in [2.59 mm]

Click the following link (or enter part number in "SEARCH" on website) to obtain additional part information including price, inventory and certifications: [SSMC Plug to SMA Female Bulkhead Cable Using RG316 Coax with HeatShrink, LF Solder PE3W08550LF/HS](#)



SSMC Plug to SMA Female Bulkhead Cable Using
RG316 Coax with HeatShrink, LF Solder

RF Cable Assemblies Technical Data Sheet

PE3W08550LF/HS

Connectors

Description	Connector 1	Connector 2
Type	SSMC Plug	SMA Female Bulkhead
Impedance	50 Ohms	50 Ohms
Mating Cycles	500	
Contact Material and Plating	Beryllium Copper, Gold	Beryllium Copper, Gold
Dielectric Type	PTFE	PTFE
Outer Conductor Material and Plating		Brass, Gold
Body Material and Plating	Beryllium Copper, Gold	Brass, Gold
Coupling Nut Material and Plating	Beryllium Copper, Gold	
Hex Size	5/32 inch	
Torque	1 in-lbs [0.11 Nm]	

Environmental Specifications

Temperature

Operating Range -45 to +120 deg C

Compliance Certifications (see [product page](#) for current document)

Plotted and Other Data

Notes:

Click the following link (or enter part number in "SEARCH" on website) to obtain additional part information including price, inventory and certifications: [SSMC Plug to SMA Female Bulkhead Cable Using RG316 Coax with HeatShrink, LF Solder PE3W08550LF/HS](#)



SSMC Plug to SMA Female Bulkhead Cable Using RG316 Coax with HeatShrink, LF Solder

RF Cable Assemblies Technical Data Sheet

PE3W08550LF/HS

How to Order

Part Number Configuration:

PE3W08550LF/HS - xx

uu

Unit of Measure:
cm = Centimeters
<blank> = Inches
Length
Base Number

Example: PE3W08550LF/HS-12 = 12 inches long cable
PE3W08550LF/HS-100cm = 100 cm long cable

SSMC Plug to SMA Female Bulkhead Cable Using RG316 Coax with HeatShrink, LF Solder from Pasternack Enterprises has same day shipment for domestic and International orders. Our RF, microwave and millimeter wave products maintain a 99.4% availability and are part of the broadest selection in the industry.

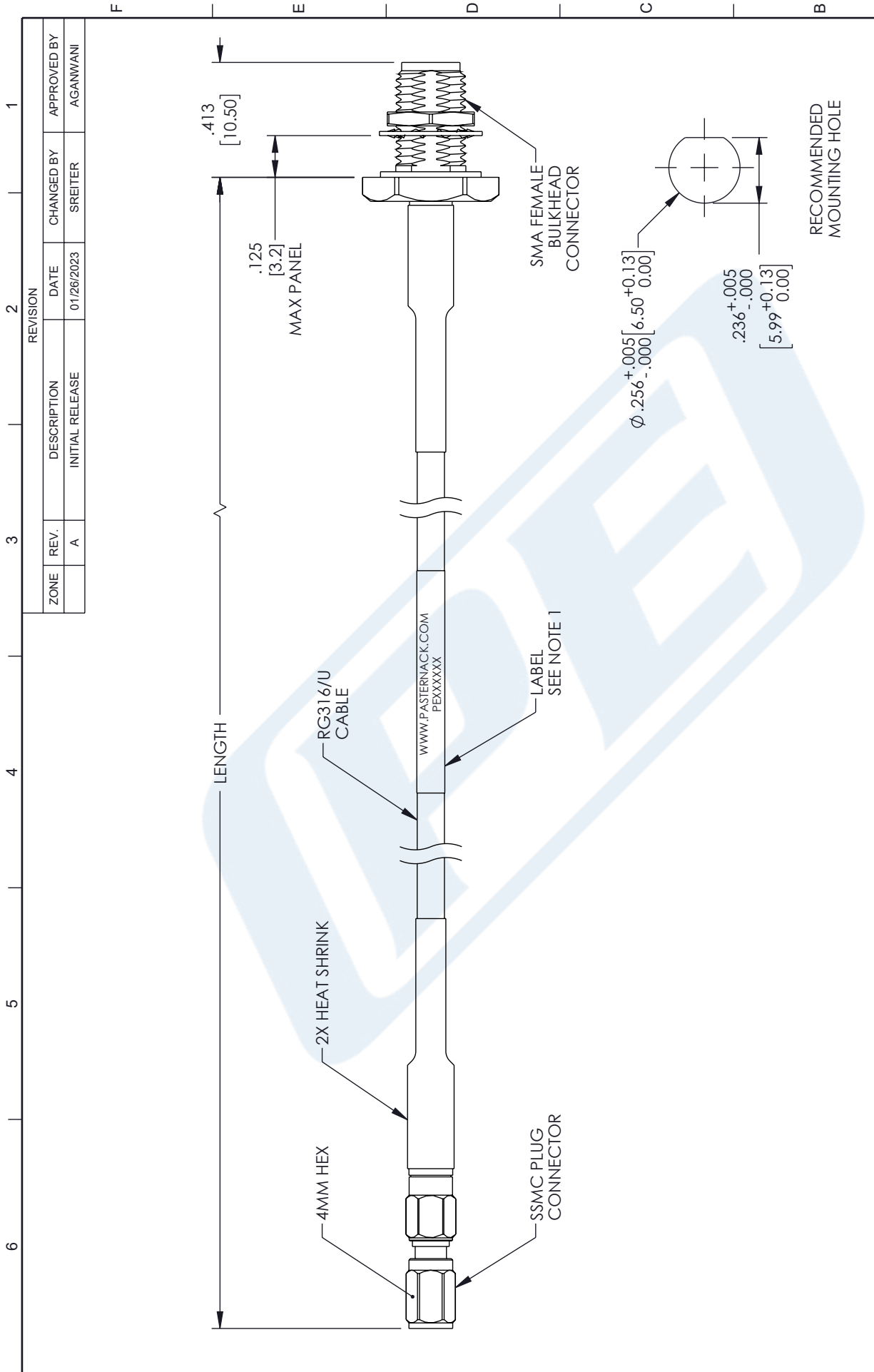
Click the following link (or enter part number in "SEARCH" on website) to obtain additional part information including price, inventory and certifications: [SSMC Plug to SMA Female Bulkhead Cable Using RG316 Coax with HeatShrink, LF Solder PE3W08550LF/HS](https://www.pasternack.com/ssmc-plug-to-sma-female-bulkhead-cable-using-rg316-with-heatshrink-lf-solder-pe3w08550lf/hs)

URL: <https://www.pasternack.com/ssmc-plug-to-sma-female-bulkhead-cable-using-rg316-with-heatshrink-lf-solder-pe3w08550lf-hs-p.aspx>

The information contained in this document is accurate to the best of our knowledge and representative of the part described herein. It may be necessary to make modifications to the part and/or the documentation of the part, in order to implement improvements. Pasternack reserves the right to make such changes as required. Unless otherwise stated, all specifications are nominal. Pasternack does not make any representation or warranty regarding the suitability of the part described herein for any particular purpose, and Pasternack does not assume any liability arising out of the use of any part or documentation.

PE3W08550LF/HS CAD Drawing

SSMC Plug to SMA Female Bulkhead Cable Using RG316 Coax with HeatShrink, LF Solder



ZONE	REV.	DESCRIPTION	DATE	CHANGED BY	APPROVED BY
	A	INITIAL RELEASE	01/26/2023	SREITER	AGANWANI

PE PASTERNAK
an INFINITO brand

Website: www.Pasternack.com
Phone: 1.866.727.8376 | 1.949.261.1920

DESCRIPTION: SSMC PLUG TO SMA FEMALE BULKHEAD CABLE USING RG316 COAX WITH HEATSHRINK, LF SOLDER

INTERPRET ALL DIMENSIONS AND TOLERANCES PER ASME Y14.5

SCALE: NONE SHEET: 1 OF 1

ITEM NO.: PE3W08550LF/HS

REV: A

UNLESS OTHERWISE SPECIFIED LEADING DIMENSIONS ARE INCHES DIMENSIONS IN [] ARE MILLIMETERS

TOLERANCES:
 .X = ±.2 [5] FRACTIONS
 .XX = ±.02 [.5] ±.1/32
 .XXX = ±.005 [.13] ANGLES ± 1°

CABLE LENGTH TOLERANCES:
 ≤12 [305] = +1 [25] / -0
 >12 [305] ≤ 60 [1524] = +2 [51] / -0
 >60 [1524] ≤ 120 [3048] = +4 [102] / -0
 >120 [3048] ≤ 300 [7620] = +6 [152] / -0
 >300 [7620] = +5% / -0

ALL DIMENSIONS ARE FOR REFERENCE ONLY AND SUBJECT TO CHANGE WITHOUT NOTICE.

NOTES:

- CABLE ASSY LENGTH LABEL PLACEMENT: 36 INCH OR LESS, ONE LABEL APPROX CENTERED. LONGER THAN 36 INCH, TWO LABELS APPROX 6 INCHES FROM EACH CONNECTOR. CABLE ASSEMBLIES SHALL BE TESTED FOR CONTINUITY.

THE INFORMATION CONTAINED IN THIS DRAWING IS THE SOLE PROPERTY OF INFINITE ELECTRONICS, INC. ANY REPRODUCTION IN PART OR WHOLE WITHOUT THE WRITTEN PERMISSION OF INFINITE ELECTRONICS, INC. IS PROHIBITED. THESE COMMODITIES, TECHNOLOGY OR SOFTWARE WERE EXPORTED FROM THE UNITED STATES IN ACCORDANCE WITH THE EXPORT ADMINISTRATION REGULATIONS. DIVERSION CONTRARY TO U.S. LAW PROHIBITED.