

## SMC Plug Right Angle to SMA Male Cable Using RG188-DS Coax



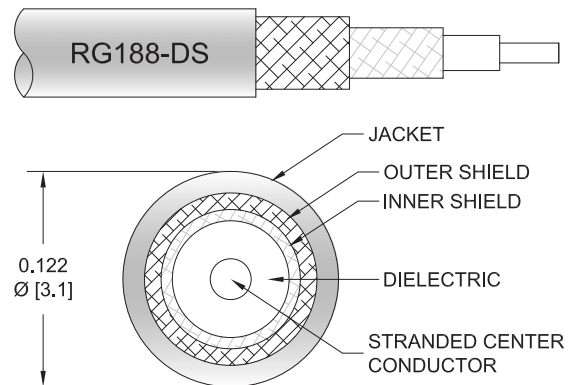
### PE3W08632

#### Configuration

- Connector 1: SMC Plug Right Angle
- Connector 2: SMA Male
- Cable Type: RG188-DS
- Coax Flex Type: Flexible

#### Features

- Max Frequency 4 GHz
- Double Shielded
- PTFE Jacket



#### Applications

- General Purpose
- Laboratory Use

#### Description

Pasternack's PE3W08632 SMC plug right angle to SMA male cable using RG188-DS coax is part of our full line of RF components available for same-day shipping. Pasternack's flexible RF cable assemblies are ideal for applications where tight bends and flexure are required. This Pasternack SMC to SMA cable assembly has a plug to male gender configuration with 50 ohm flexible RG188-DS coax. The PE3W08632 SMC plug to SMA male cable assembly operates to 4 GHz. The right angle SMC interface on the RG188-DS cable allows for easier connections in tight spaces. The double shielding of this Pasternack cable assembly provides excellent shielding effectiveness.

Custom versions of most RF cable assemblies can be built and shipped same day. Custom cable assembly lengths can be obtained by specifying the desired length on the web site at time of order or by contacting a sales representative. Other available RF cable assembly value added services include connector orientation or clocking, heat shrink booting and custom labeling. RF testing can also be performed to document the electrical performance of your cable assembly.

#### Electrical Specifications

| Description     | Minimum | Typical     | Maximum | Units        |
|-----------------|---------|-------------|---------|--------------|
| Frequency Range | DC      |             | 4       | GHz          |
| VSWR            |         |             | 1.4:1   |              |
| Capacitance     |         | 32 [104.99] |         | pF/ft [pF/m] |

#### Specifications by Frequency

SMC Plug Right Angle to SMA Male  
Cable Using RG188-DS Coax



**PE3W08632**

| Part Number  | Length                   | Description           | F1        | F2   | F3   | F4   | F5    | Units | Weight (lbs) |
|--------------|--------------------------|-----------------------|-----------|------|------|------|-------|-------|--------------|
|              |                          |                       | Frequency |      | 100  | 250  | 500   | 1000  |              |
| PE3W08632    | Custom Lengths Available | Insertion Loss (Typ.) | 0.12      | 0.15 | 0.2  | 0.3  | 0.667 | dB/ft |              |
|              |                          |                       | 0.38      | 0.48 | 0.65 | 0.99 | 2.19  | dB/m  |              |
| PE3W08632-12 | 12 inch                  | Insertion Loss (Typ.) | 0.42      | 0.45 | 0.5  | 0.6  | 0.97  | dB    | 0.034        |
| PE3W08632-24 | 24 inch                  | Insertion Loss (Typ.) | 0.53      | 0.59 | 0.7  | 0.9  | 1.64  | dB    | 0.049        |
| PE3W08632-36 | 36 inch                  | Insertion Loss (Typ.) | 0.65      | 0.74 | 0.9  | 1.2  | 2.31  | dB    | 0.064        |
| PE3W08632-48 | 48 inch                  | Insertion Loss (Typ.) | 0.76      | 0.88 | 1.09 | 1.5  | 2.97  | dB    | 0.079        |
| PE3W08632-60 | 60 inch                  | Insertion Loss (Typ.) | 0.88      | 1.03 | 1.29 | 1.8  | 3.64  | dB    | 0.094        |

The insertion loss data for the base model does not include loss due to the connectors. Each length includes insertion loss due to the connectors.

Loss due to Connector 1: 0.2 dB  
 Loss due to Connector 2: 0.1 dB  
 Base Weight: 0.034 pounds  
 Additional Weight per Inch: 0.00125 pounds

**Mechanical Specifications**

**Cable Assembly**

Width/Diameter 0.5 in [12.7 mm]  
 Weight 0.034 lbs [15.42 g]

**Cable**

Cable Type RG188-DS  
 Impedance 50 Ohms  
 Inner Conductor Type Stranded  
 Inner Conductor Material and Plating Copper Clad Steel, Silver  
 Dielectric Type PTFE  
 Number of Shields 2  
 Shield Layer 1 Silver Plated Copper Braid  
 Shield Layer 2 Silver Plated Copper Braid  
 Jacket Material PTFE, White  
 Jacket Diameter 0.118 in [3 mm]

## SMC Plug Right Angle to SMA Male Cable Using RG188-DS Coax



### PE3W08632

#### Connectors

| Description                        | Connector 1            | Connector 2      |
|------------------------------------|------------------------|------------------|
| Type                               | SMC Plug Right Angle   | SMA Male         |
| Specification                      | MIL-STD-348A           | MIL-STD-348A     |
| Impedance                          | 50 Ohms                | 50 Ohms          |
| Configuration                      | Right Angle            | Straight         |
| Contact Material and Plating       | Beryllium Copper, Gold | Brass, Gold      |
| Contact Plating Specification      | 30µ in. minimum        | 30 µin minimum   |
| Dielectric Type                    | Teflon                 | PTFE             |
| Body Material and Plating          | Brass, Nickel          | Brass, Nickel    |
| Body Plating Specification         | 100µ in. minimum       | 100 µin minimum  |
| Coupling Nut Material and Plating  | Brass, Nickel          | Brass, Nickel    |
| Coupling Nut Plating Specification | 100µ in. minimum       | 100 µin minimum  |
| Hex Size                           | 4-Jan in.              | 16-May inch      |
| Torque                             | 3 in-lbs 0.34 Nm       | 3 in-lbs 0.34 Nm |

#### Environmental Specifications

Operating Range Temperature -55 to +165 deg C

**Compliance Certifications** (see [product page](#) for current document)

#### Plotted and Other Data

Notes:

## SMC Plug Right Angle to SMA Male Cable Using RG188-DS Coax



### PE3W08632

#### Typical Performance Data

#### How to Order

Part Number Configuration:

**PE3W08632**

- **xx**

**uu**

Unit of Measure:  
cm = Centimeters  
<blank> = Inches  
Length  
Base Number

Example: PE3W08632-12 = 12 inches long cable  
PE3W08632-100cm = 100 cm long cable

SMC Plug Right Angle to SMA Male Cable Using RG188-DS Coax from Pasternack Enterprises has same day shipment for domestic and International orders. Our RF, microwave and millimeter wave products maintain a 99.4% availability and are part of the broadest selection in the industry.

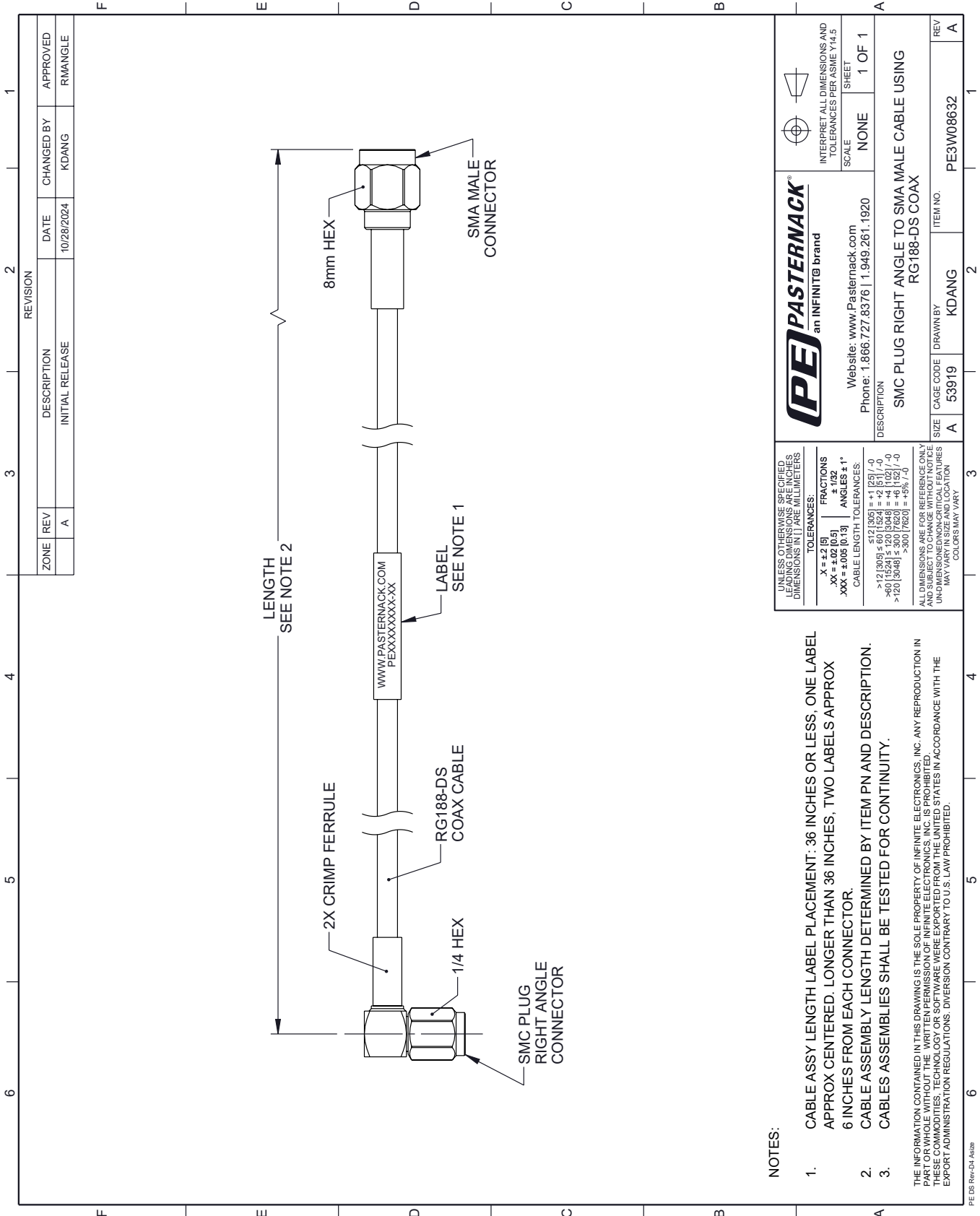
Click the following link (or enter part number in "SEARCH" on website) to obtain additional part information including price, inventory and certifications: [SMC Plug Right Angle to SMA Male Cable Using RG188-DS Coax PE3W08632](#)

URL: <https://www.pasternack.com/smc-plug-right-angle-to-sma-male-cable-using-rg188-ds-pe3w08632-p.aspx>

The information contained within this document is accurate to the best of our knowledge and representative of the part described herein. It may be necessary to make modifications to the part and/or the documentation of the part in order to implement improvements. Pasternack Enterprises reserves the right to make such changes as required. Unless otherwise stated, all specifications are nominal. Pasternack Enterprises does not make any representation or warranty regarding the suitability of the part described herein for any particular purpose, and Pasternack Enterprises does not assume liability arising out of the use of any part or document.

# PE3W08632 CAD Drawing

SMC Plug Right Angle to SMA Male Cable Using RG188-DS Coax



| REVISION        |     | DATE       | CHANGED BY | APPROVED |
|-----------------|-----|------------|------------|----------|
| ZONE            | REV |            |            |          |
|                 | A   | 10/28/2024 | KDANG      | RMANGLE  |
| DESCRIPTION     |     |            |            |          |
| INITIAL RELEASE |     |            |            |          |

**NOTES:**

1. CABLE ASSY LENGTH LABEL PLACEMENT: .36 INCHES OR LESS, ONE LABEL APPROX CENTERED. LONGER THAN .36 INCHES, TWO LABELS APPROX .6 INCHES FROM EACH CONNECTOR.
2. CABLE ASSEMBLY LENGTH DETERMINED BY ITEM PN AND DESCRIPTION.
3. CABLE ASSEMBLIES SHALL BE TESTED FOR CONTINUITY.

THE INFORMATION CONTAINED IN THIS DRAWING IS THE SOLE PROPERTY OF INFINITE ELECTRONICS, INC. ANY REPRODUCTION IN PART OR WHOLE WITHOUT THE WRITTEN PERMISSION OF INFINITE ELECTRONICS, INC. IS PROHIBITED. THESE COMMODITIES, TECHNOLOGY OR SOFTWARE WERE EXPORTED FROM THE UNITED STATES IN ACCORDANCE WITH THE EXPORT ADMINISTRATION REGULATIONS. DIVERSION CONTRARY TO U.S. LAW PROHIBITED.

|  |  |
|--|--|
| UNLESS OTHERWISE SPECIFIED, LEADING DIMENSIONS ARE IN INCHES. DIMENSIONS IN [ ] ARE MILLIMETERS.                           |  |
| TOLERANCES:  |  |
| .X = ±.2 [5]   | FRACTIONS ± 1/32                         |
| .XX = ±.02 [0.5]   | ANGLES ± 1°                              |
| .XXX = ±.005 [0.13]  | CABLE LENGTH TOLERANCES:                 |
|  | <12 [305] ±.60 [1524]                    |
|  | >12 [305] ±.60 [1524] = +.4 [1027] / -.0 |
|  | >20 [508] ±.60 [1524] = +.4 [1027] / -.0 |
|  | >30 [762] ±.60 [1524] = +.5% / -.0       |
| ALL DIMENSIONS ARE FOR REFERENCE ONLY. UNDIMENSIONED NON-CRITICAL FEATURES MAY VARY IN SIZE AND LOCATION. COLORS MAY VARY. |  |

**PASTERNAK**  
an INFINITE brand

Website: [www.Pasternack.com](http://www.Pasternack.com)  
Phone: 1.866.727.8376 | 1.949.261.1920

INTERPRET ALL DIMENSIONS AND TOLERANCES PER ASME Y14.5

SCALE NONE

SHEET 1 OF 1

|  |           |           |     |
|--|-----------|-----------|-----|
| DESCRIPTION  |           | ITEM NO.  |     |
| SMC PLUG RIGHT ANGLE TO SMA MALE CABLE USING RG188-DS COAX |           | PE3W08632 |     |
| SIZE   | CAGE CODE | DRAWN BY  | REV |
| A  | 53919     | KDANG     | A   |