



# SMA Female Bulkhead to SMP Female Right Angle Cable Using RG178 Coax with HeatShrink

## RF Cable Assemblies Technical Data Sheet

PE3W10445/HS

### Configuration

- Connector 1: SMA Female Bulkhead
- Connector 2: SMP Female Right Angle
- Cable Type: RG178

### Features

- 70% Phase Velocity
- FEP Jacket

### Applications

- General Purpose
- Laboratory Use

### Description

Pasternack's PE3W10445/HS SMA female bulkhead to SMP female right angle cable using RG178 coax is part of our full line of RF components available for same-day shipping. Pasternack's flexible RF cable assemblies are ideal for applications where tight bends and flexure are required. This Pasternack SMA to SMP cable assembly has a female to female gender configuration with 50 ohm flexible RG178 coax. The right angle SMP interface on the RG178 cable allows for easier connections in tight spaces. Our RF cable assembly with SMA bulkhead interface allows designers to create external connections on their product enclosures, and can be used in a variety of other rack mount and panel mount applications.

Custom versions of most RF cable assemblies can be built and shipped same day. Custom cable assembly lengths can be obtained by specifying the desired length on the web site at time of order or by contacting a sales representative. Other available RF cable assembly value added services include connector orientation or clocking, heat shrink booting and custom labeling. RF testing can also be performed to document the electrical performance of your cable assembly.

### Electrical Specifications

Description	Minimum	Typical	Maximum	Units
Velocity of Propagation		70		%
Capacitance		29.4 [96.46]		pF/ft [pF/m]

### Mechanical Specifications

#### Cable Assembly

Weight 0.023 lbs [10.43 g]

#### Cable

Cable Type RG178  
 Impedance 50 Ohms  
 Inner Conductor Type Stranded  
 Inner Conductor Material and Plating Copper Clad Steel, Silver  
 Dielectric Type PTFE

Click the following link (or enter part number in "SEARCH" on website) to obtain additional part information including price, inventory and certifications: [SMA Female Bulkhead to SMP Female Right Angle Cable Using RG178 Coax with Heat-Shrink PE3W10445/HS](#)



SMA Female Bulkhead to SMP Female Right Angle  
Cable Using RG178 Coax with HeatShrink

**RF Cable Assemblies Technical Data Sheet**

**PE3W10445/HS**

Number of Shields	1
Shield Layer 1	Silver Plated Copper Braid
Jacket Material	FEP, Tan
Jacket Diameter	0.072 in [1.83 mm]
Repeated Minimum Bend Radius	0.4 in [10.16 mm]

**Connectors**

Description	Connector 1	Connector 2
Type	SMA Female Bulkhead	SMP Female Right Angle
Specification		MIL-STD-348
Impedance	50 Ohms	50 Ohms
Mating Cycles	500	
Contact Material and Plating	Beryllium Copper, Gold	Beryllium Copper, Gold
Contact Plating Specification		MIL-G-45204
Dielectric Type	PTFE	PTFE
Outer Conductor Material and Plating	Brass, Gold	
Body Material and Plating	Brass, Gold	Beryllium Copper, Gold
Body Plating Specification		MIL-G-45204
Coupling Nut Material and Plating	Brass, Gold	

**Environmental Specifications**

**Temperature**

Operating Range -40 to +85 deg C

**Compliance Certifications** (see [product page](#) for current document)

**Plotted and Other Data**

Notes:

Click the following link (or enter part number in "SEARCH" on website) to obtain additional part information including price, inventory and certifications: [SMA Female Bulkhead to SMP Female Right Angle Cable Using RG178 Coax with Heat-Shrink PE3W10445/HS](#)



SMA Female Bulkhead to SMP Female Right Angle Cable Using RG178 Coax with HeatShrink

**RF Cable Assemblies Technical Data Sheet**

**PE3W10445/HS**

**How to Order**

Part Number Configuration:

**PE3W10445/HS - xx uu**

Unit of Measure:  
cm = Centimeters  
<blank> = Inches  
Length  
Base Number

Example: PE3W10445/HS-12 = 12 inches long cable  
PE3W10445/HS-100cm = 100 cm long cable

SMA Female Bulkhead to SMP Female Right Angle Cable Using RG178 Coax with HeatShrink from Pasternack Enterprises has same day shipment for domestic and International orders. Our RF, microwave and millimeter wave products maintain a 99.4% availability and are part of the broadest selection in the industry.

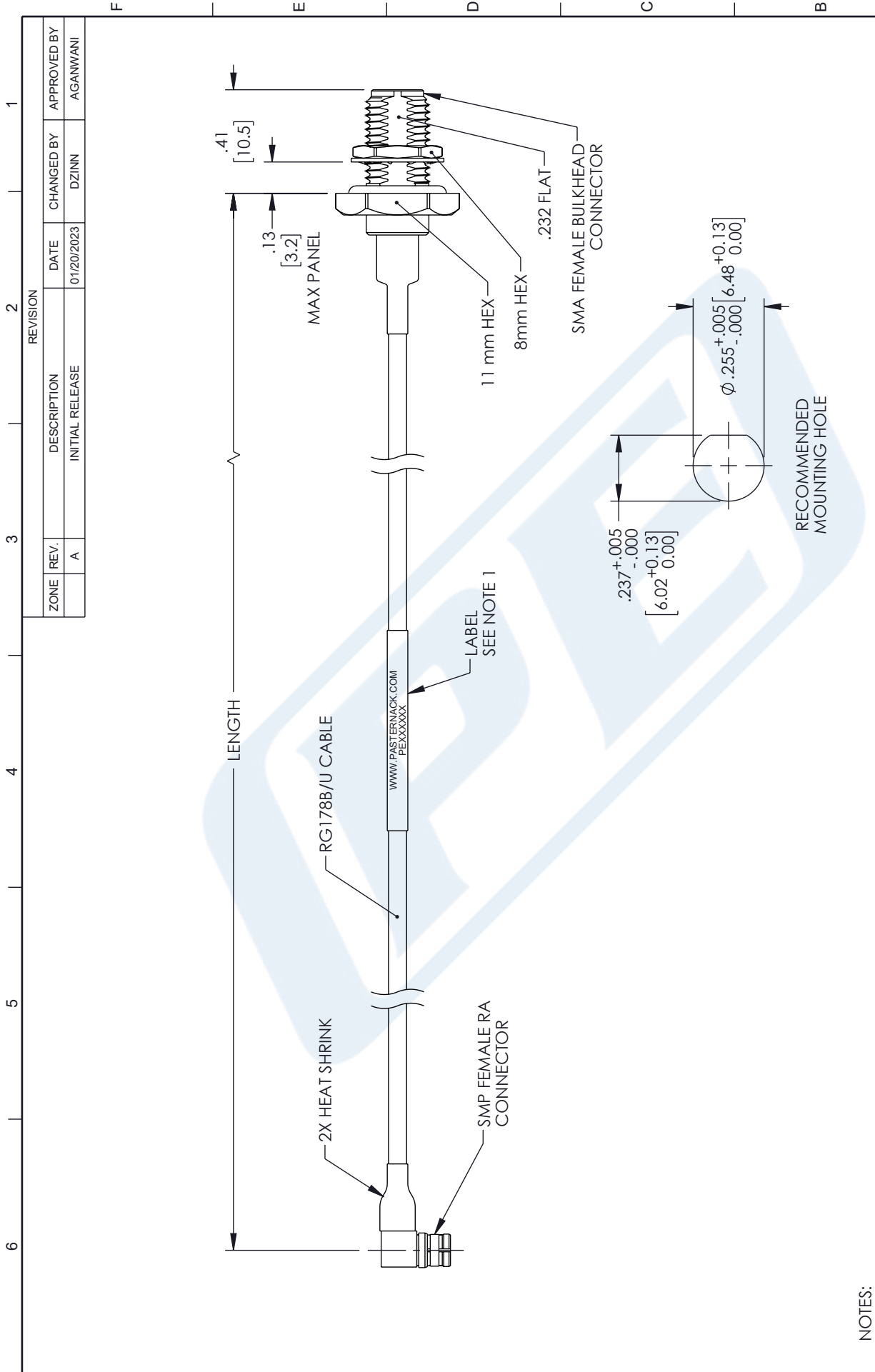
Click the following link (or enter part number in "SEARCH" on website) to obtain additional part information including price, inventory and certifications: [SMA Female Bulkhead to SMP Female Right Angle Cable Using RG178 Coax with HeatShrink PE3W10445/HS](#)

URL: <https://www.pasternack.com/sma-female-bulkhead-to-smp-female-cable-using-rg178-with-heatshrink-pe3w10445-hs-p.aspx>

The information contained in this document is accurate to the best of our knowledge and representative of the part described herein. It may be necessary to make modifications to the part and/or the documentation of the part, in order to implement improvements. Pasternack reserves the right to make such changes as required. Unless otherwise stated, all specifications are nominal. Pasternack does not make any representation or warranty regarding the suitability of the part described herein for any particular purpose, and Pasternack does not assume any liability arising out of the use of any part or documentation.

# PE3W10445/HS CAD Drawing

## SMA Female Bulkhead to SMP Female Right Angle Cable Using RG178 Coax with HeatShrink



<p style="font-size: small;">an INFINITO brand</p>	<p style="font-size: x-small;">INTERPRET ALL DIMENSIONS AND TOLERANCES PER ASME Y14.5</p> <p style="font-size: x-small;">SCALE: NONE</p> <p style="font-size: x-small;">SHEET: 1 OF 1</p>	<p style="font-size: x-small;">WEBSITE: <a href="http://www.Pasternack.com">www.Pasternack.com</a></p> <p style="font-size: x-small;">PHONE: 1.866.727.8376   1.949.261.1920</p>
<p style="font-size: x-small;">DESCRIPTION</p> <p style="font-weight: bold;">SMA FEMALE BULKHEAD TO SMP FEMALE RIGHT ANGLE CABLE USING RG178 COAX WITH HEATSHRINK</p>		
UNLESS OTHERWISE SPECIFIED LEADING DIMENSIONS ARE INCHES DIMENSIONS IN [ ] ARE MILLIMETERS	TOLERANCES:	CABLE LENGTH TOLERANCES:
.X = ±.2 [5]    FRACTIONS ±.1/32	.XX = ±.02 [.5]    ANGLES ± 1°	>12 [305] = +1 [25] / -0
.XXX = ±.005 [.13]	CABLE LENGTH TOLERANCES:	>60 [1524] = +2 [51] / -0
>12 [305] ≤ 60 [1524] = +4 [102] / -0	>60 [1524] ≤ 120 [3048] = +6 [152] / -0	>120 [3048] ≤ 300 [7620] = +8 [203] / -0
>300 [7620] = +5% / -0	ALL DIMENSIONS ARE FOR REFERENCE ONLY AND SUBJECT TO CHANGE WITHOUT NOTICE.	

**NOTES:**

1. CABLE ASSEMBLY LENGTH LABEL PLACEMENT: 36 INCHES OR LESS, ONE LABEL APPROXIMATELY CENTERED. LONGER THAN 36 INCHES, TWO LABELS APPROXIMATELY 6 INCHES FROM EACH CONNECTOR.
2. CABLE ASSEMBLIES SHALL BE TESTED FOR CONTINUITY.

THE INFORMATION CONTAINED IN THIS DRAWING IS THE SOLE PROPERTY OF INFINITE ELECTRONICS, INC. ANY REPRODUCTION IN PART OR WHOLE WITHOUT THE WRITTEN PERMISSION OF INFINITE ELECTRONICS, INC. IS PROHIBITED. THESE COMMODITIES, TECHNOLOGY OR SOFTWARE WERE EXPORTED FROM THE UNITED STATES IN ACCORDANCE WITH THE EXPORT ADMINISTRATION REGULATIONS. DIVERSION CONTRARY TO U.S. LAW PROHIBITED.

ZONE	REV.	DESCRIPTION	DATE	CHANGED BY	APPROVED BY
A	A	INITIAL RELEASE	01/20/2023	DZINN	AGAN/WANI