

Fire Rated 2.2-5 Male to N Male Low PIM Cable Using SPF-250 Coax

PE3W10922

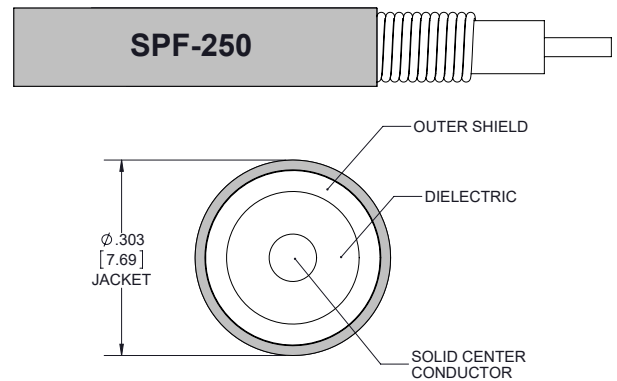


Configuration

- Connector 1: 2.2-5 Male
- Connector 2: N Male
- Cable Type: SPF-250
- Coax Flex Type: Corrugated

Features

- Max Frequency 6 GHz
- Low PIM: -155 dBc Max
- 83% Phase Velocity
- FRPE Jacket



Applications

- General Purpose
- Laboratory Use
- Low PIM Applications

Description

Pasternack's PE3W10922 2.2-5 male to type N male cable using SPF-250 coax is part of our full line of RF components available for same-day shipping. Pasternack's corrugated RF cable assemblies are ideal for applications where durability and high power are needed. This Pasternack 2.2-5 to type N cable assembly has a male to male gender configuration with 50 ohm corrugated SPF-250 coax. The PE3W10922 2.2-5 male to type N male cable assembly operates to 6 GHz. Our low PIM design also offers excellent passive intermodulation performance with PIM levels better than -155 dBc.

Custom versions of most RF cable assemblies can be built and shipped same day. Custom cable assembly lengths can be obtained by specifying the desired length on the web site at time of order or by contacting a sales representative. Other available RF cable assembly value added services include connector orientation or clocking, heat shrink booting and custom labeling. RF testing can also be performed to document the electrical performance of your cable assembly.

Electrical Specifications

Description	Minimum	Typical	Maximum	Units
Frequency Range	DC		6	GHz
VSWR			1.4:1	
Velocity of Propagation		83		%
Passive Intermodulation IM3 (2x43dBm Tones) at 850 MHz or 1900 MHz			-155	dBc
Capacitance		24 [78.74]		pF/ft [pF/m]
Inductance		0.054 [0.18]		uH/ft [uH/m]

Specifications by Frequency

Fire Rated 2.2-5 Male to N Male Low PIM Cable Using SPF-250 Coax



PE3W10922

Part Number	Length	Description	F1	F2	F3	F4	Units	Weight (lbs)
		Frequency	500	1000	2500	6000	MHz	
PE3W10922	Custom Lengths Available	Insertion Loss (Typ.)	0.042	0.06	0.103	0.166	dB/ft	
			0.14	0.2	0.34	0.55	dB/m	
PE3W10922-12	12 In	Insertion Loss (Typ.)	0.25	0.26	0.31	0.37	dB	0.212
PE3W10922-24	24 In	Insertion Loss (Typ.)	0.29	0.32	0.41	0.54	dB	0.265
PE3W10922-36	36 In	Insertion Loss (Typ.)	0.33	0.38	0.51	0.7	dB	0.317
PE3W10922-60	60 In	Insertion Loss (Typ.)	0.41	0.5	0.72	1.03	dB	0.421
PE3W10922-50CM	50 CM	Insertion Loss (Typ.)	0.27	0.3	0.37	0.48	dB	0.246

The insertion loss data for the base model does not include loss due to the connectors. Each length includes insertion loss due to the connectors.

Loss due to Connector 1:	0.1 dB
Loss due to Connector 2:	0.1 dB
Base Weight:	0.212 pounds
Additional Weight per Inch:	0.00434 pounds

Mechanical Specifications

Cable Assembly

Width/Diameter	.5 in [12.7 mm]
Weight	0.212 lbs [96.16 g]

Cable

Cable Type	SPF-250
Impedance	50 Ohms
Inner Conductor Type	Solid
Inner Conductor Material and Plating	Copper Clad Aluminum
Dielectric Type	Foam PE
Number of Shields	1
Outer Conductor 1 Material and Plating	Copper
Jacket Material	FRPE, Black
Jacket Diameter	0.303 in [7.7 mm]
One Time Minimum Bend Radius	1.25 in [31.75 mm]
Bending Moment	0.5 lbs-ft [0.68 N-m]

Connectors

Description	Connector 1	Connector 2
Type	2.2-5 Male	N Male
Impedance	50 Ohms	50 Ohms
Configuration	Straight	Straight
Contact Material and Plating	Brass, Silver	Brass, Silver
Dielectric Type	PTFE	PTFE
Body Material and Plating	Brass, Tri-Metal	Brass, Tri-Metal
Coupling Nut Material and Plating	Brass, Tri-Metal	Brass, Tri-Metal

Fire Rated 2.2-5 Male to N Male Low PIM Cable Using SPF-250 Coax



PE3W10922

Environmental Specifications

Operating Range Temperature

-40 to +85 deg C

Compliance Certifications (see [product page](#) for current document)

Plotted and Other Data

Notes:

Typical Performance Data

How to Order

Part Number Configuration:

PE3W10922

- xx

uu

Unit of Measure:
cm = Centimeters
<blank> = Inches
Length
Base Number

Example: PE3W10922-12 = 12 inches long cable
PE3W10922-100cm = 100 cm long cable

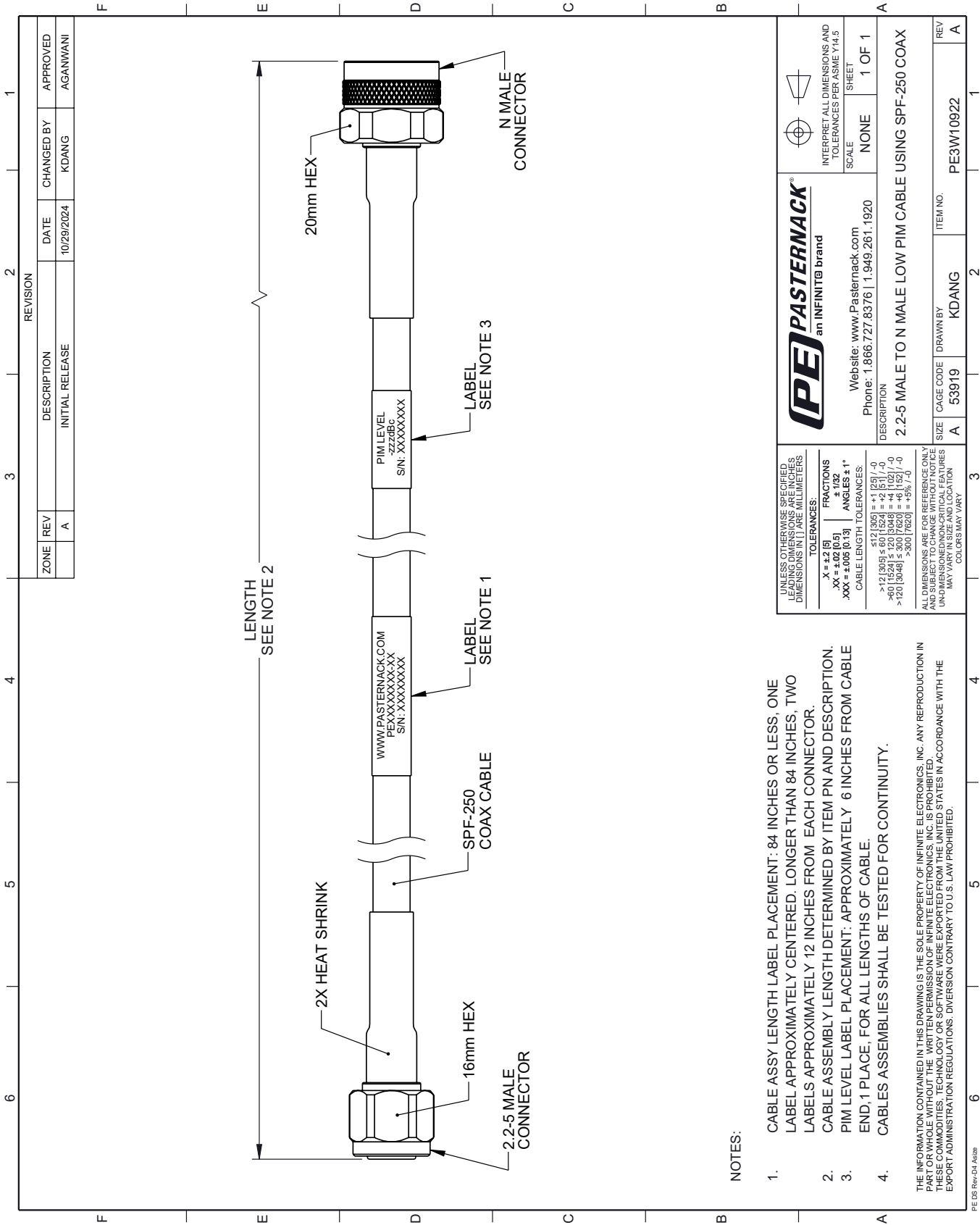
Fire Rated 2.2-5 Male to N Male Low PIM Cable Using SPF-250 Coax from Pasternack Enterprises has same day shipment for domestic and International orders. Our RF, microwave and millimeter wave products maintain a 99.4% availability and are part of the broadest selection in the industry.

Click the following link (or enter part number in "SEARCH" on website) to obtain additional part information including price, inventory and certifications: [Fire Rated 2.2-5 Male to N Male Low PIM Cable Using SPF-250 Coax PE3W10922](#)

URL: <https://www.pasternack.com/fire-rated-2.2-5-male-to-n-male-low-pim-cable-using-spf-250-pe3w10922-p.aspx>

The information contained within this document is accurate to the best of our knowledge and representative of the part described herein. It may be necessary to make modifications to the part and/or the documentation of the part in order to implement improvements. Pasternack Enterprises reserves the right to make such changes as required. Unless otherwise stated, all specifications are nominal. Pasternack Enterprises does not make any representation or warranty regarding the suitability of the part described herein for any particular purpose, and Pasternack Enterprises does not assume liability arising out of the use of any part or document.

PE3W10922 CAD Drawing
Fire Rated 2.2-5 Male to N Male Low PIM Cable Using SPF-250 Coax



UNLESS OTHERWISE SPECIFIED, LEADING DIMENSIONS ARE IN INCHES, TRAILING DIMENSIONS ARE IN MILLIMETERS.		PASTERNAK an INFINITE [®] brand		INTERPRET ALL DIMENSIONS AND TOLERANCES PER ASME Y14.5	
TOLERANCES:		Website: www.Pasternack.com		SCALE	
.X = ±.2 [5]		Phone: 1.866.727.8376 1.949.261.1920		NONE	
.XX = ±.02 [0.5]		DESCRIPTION		SHEET	
.XXX = ±.005 [0.13]		2.2-5 MALE TO N MALE LOW PIM CABLE USING SPF-250 COAX		1 OF 1	
ANGLES ± 1°		SIZE		CAGE CODE	
CABLE LENGTH TOLERANCES:		A		53919	
<12 [305] ±.60 [1524] = ±.1 [254] / -0		DRAWN BY		KDANG	
>12 [305] ±.60 [1524] = ±.1 [254] / -0		ITEM NO.		PE3W10922	
>40 [1024] ±.120 [3048] = ±.4 [1027] / -0		REV		A	
>120 [3048] ±.300 [7620] = ±.95 [241]		COLORS MAY VARY			

- NOTES:
- CABLE ASSY LENGTH LABEL PLACEMENT: 84 INCHES OR LESS; ONE LABEL APPROXIMATELY CENTERED. LONGER THAN 84 INCHES, TWO LABELS APPROXIMATELY 12 INCHES FROM EACH CONNECTOR.
 - CABLE ASSEMBLY LENGTH DETERMINED BY ITEM PN AND DESCRIPTION.
 - PIM LEVEL LABEL PLACEMENT: APPROXIMATELY 6 INCHES FROM CABLE END, 1 PLACE, FOR ALL LENGTHS OF CABLE.
 - CABLES ASSEMBLIES SHALL BE TESTED FOR CONTINUITY.
- THE INFORMATION CONTAINED IN THIS DRAWING IS THE SOLE PROPERTY OF INFINITE ELECTRONICS, INC. ANY REPRODUCTION IN PART OR WHOLE WITHOUT THE WRITTEN PERMISSION OF INFINITE ELECTRONICS, INC. IS PROHIBITED. THESE COMMODITIES, TECHNOLOGY OR SOFTWARE WERE EXPORTED FROM THE UNITED STATES IN ACCORDANCE WITH THE EXPORT ADMINISTRATION REGULATIONS. DIVERSION CONTRARY TO U.S. LAW PROHIBITED.