



SMA Male to SMP Female Cable Using RG405 Coax

RF Cable Assemblies Technical Data Sheet

PE3W13027

Configuration

- Connector 1: SMA Male
- Connector 2: SMP Female
- Cable Type: RG405

Features

- Max Frequency 18 GHz
- Shielding Effectivity > -110 dB
- 69.5% Phase Velocity

Applications

- General Purpose
- Laboratory Use

Description

Pasternack's PE3W13027 SMA male to SMP female cable using RG405 coax is part of our full line of RF components available for same-day shipping. Pasternack's semi-rigid RF cable assemblies are ideal for high performance applications and can be formed, using proper tooling, to the routing pattern required. This Pasternack SMA to SMP cable assembly has a male to female gender configuration with 50 ohm semi-rigid RG405 coax. The PE3W13027 SMA male to SMP female cable assembly operates to 18 GHz.

Custom versions of most RF cable assemblies can be built and shipped same day. Custom cable assembly lengths can be obtained by specifying the desired length on the web site at time of order or by contacting a sales representative. Other available RF cable assembly value added services include connector orientation or clocking, heat shrink booting and custom labeling. RF testing can also be performed to document the electrical performance of your cable assembly.

Click the following link (or enter part number in "SEARCH" on website) to obtain additional part information including price, inventory and certifications: [SMA Male to SMP Female Cable Using RG405 Coax PE3W13027](#)



SMA Male to SMP Female Cable Using RG405 Coax

RF Cable Assemblies Technical Data Sheet

PE3W13027

Electrical Specifications

Description	Minimum	Typical	Maximum	Units
Frequency Range	DC		18	GHz
VSWR			1.4:1	
Velocity of Propagation		69.5		%
RF Shielding	-110			dB
Capacitance		29.4 [96.46]		pF/ft [pF/m]

Specifications by Frequency

Description	F1	F2	F3	F4	F5	Units
Frequency	1	2	4.5	9	18	GHz
Insertion Loss (Typ.)	0.22	0.284	0.445	0.735	1.12	dB/ft
	0.72	0.93	1.46	2.41	3.67	dB/m

Electrical Specification Notes:

Insertion Loss does not include the loss of the connectors. Insertion Loss is estimated as 0.1 dB for the straight connector

Mechanical Specifications

Cable Assembly

Weight 0.03 lbs [13.61 g]

Cable

Cable Type RG405
 Impedance 50 Ohms
 Inner Conductor Type Solid
 Inner Conductor Material and Plating Copper Clad Steel, Silver
 Dielectric Type PTFE
 Number of Shields 1
 Outer Conductor Material and Plating Copper

Repeated Minimum Bend Radius 0.05 in [1.27 mm]

Click the following link (or enter part number in "SEARCH" on website) to obtain additional part information including price, inventory and certifications: [SMA Male to SMP Female Cable Using RG405 Coax PE3W13027](#)



SMA Male to SMP Female Cable Using RG405 Coax

RF Cable Assemblies Technical Data Sheet

PE3W13027

Connectors

Description	Connector 1	Connector 2
Type	SMA Male	SMP Female
Specification	MIL-STD-348A	MIL-STD-348
Impedance	50 Ohms	50 Ohms
Contact Material and Plating	Brass, Gold	Beryllium Copper, Gold
Contact Plating Specification	50μ in. minimum	MIL-G-45204
Dielectric Type	Teflon	PTFE
Body Material and Plating	Brass, Gold	Beryllium Copper, Gold
Body Plating Specification	3μ in. minimum	MIL-G-45204
Coupling Nut Material and Plating	Brass, Gold	
Coupling Nut Plating Specification	3μ in. minimum	
Hex Size	5/16 Inch	
Torque	3 in-lbs [0.34 Nm]	

Environmental Specifications

Temperature

Operating Range -55 to +125 deg C

Compliance Certifications (see [product page](#) for current document)

Plotted and Other Data

Notes:

Click the following link (or enter part number in "SEARCH" on website) to obtain additional part information including price, inventory and certifications: [SMA Male to SMP Female Cable Using RG405 Coax PE3W13027](#)



SMA Male to SMP Female Cable Using RG405 Coax

RF Cable Assemblies Technical Data Sheet

PE3W13027

How to Order

Part Number Configuration:

PE3W13027

- **xx**

uu

Unit of Measure:

cm = Centimeters

<blank> = Inches

Length

Base Number

Example: PE3W13027-12 = 12 inches long cable
PE3W13027-100cm = 100 cm long cable

SMA Male to SMP Female Cable Using RG405 Coax from Pasternack Enterprises has same day shipment for domestic and International orders. Our RF, microwave and millimeter wave products maintain a 99.4% availability and are part of the broadest selection in the industry.

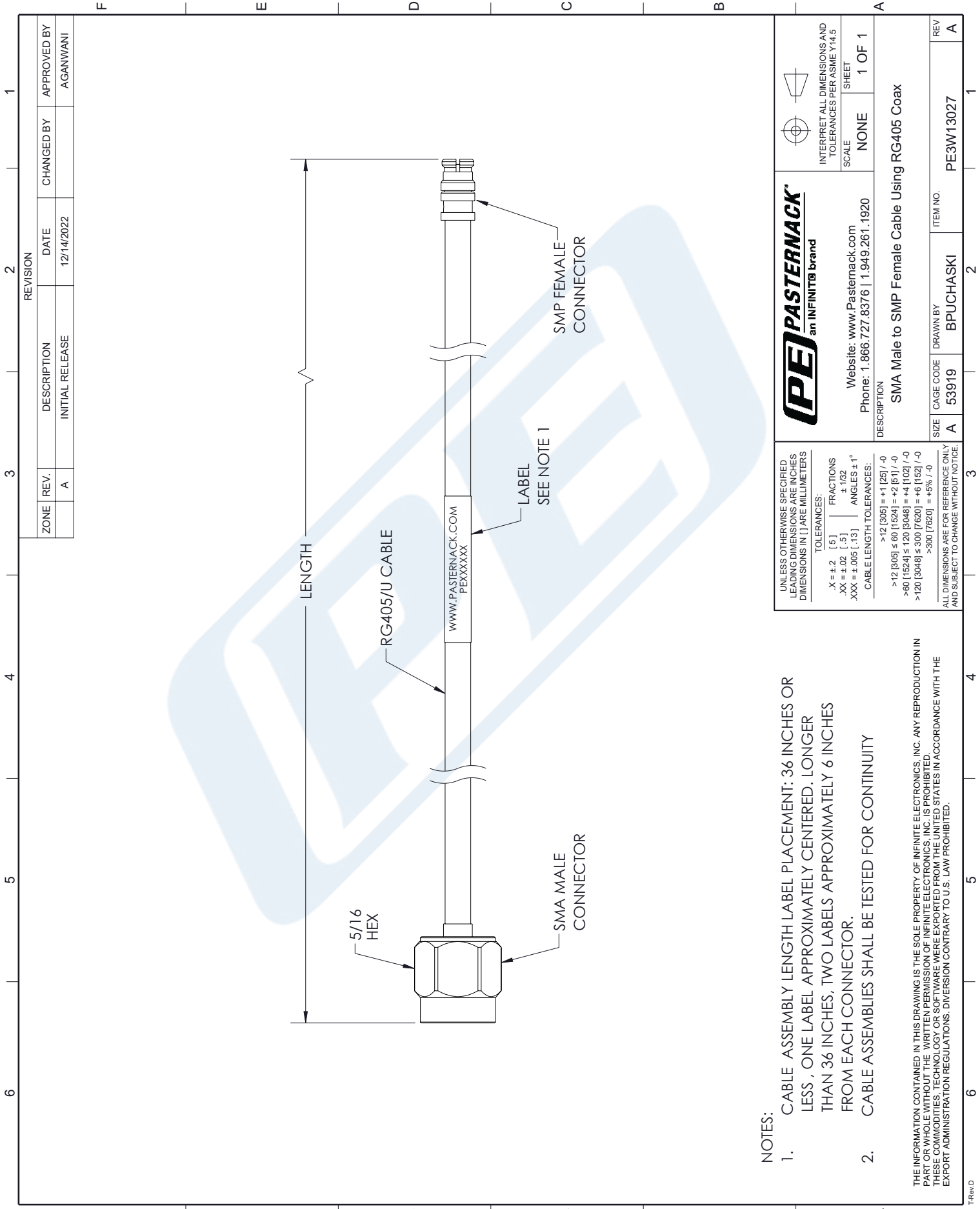
Click the following link (or enter part number in "SEARCH" on website) to obtain additional part information including price, inventory and certifications: [SMA Male to SMP Female Cable Using RG405 Coax PE3W13027](https://www.pasternack.com/sma-male-to-smp-female-cable-using-rg405-pe3w13027-p.aspx)

URL: <https://www.pasternack.com/sma-male-to-smp-female-cable-using-rg405-pe3w13027-p.aspx>

The information contained in this document is accurate to the best of our knowledge and representative of the part described herein. It may be necessary to make modifications to the part and/or the documentation of the part, in order to implement improvements. Pasternack reserves the right to make such changes as required. Unless otherwise stated, all specifications are nominal. Pasternack does not make any representation or warranty regarding the suitability of the part described herein for any particular purpose, and Pasternack does not assume any liability arising out of the use of any part or documentation.

PE3W13027 CAD Drawing

SMA Male to SMP Female Cable Using RG405 Coax



NOTES:

1. CABLE ASSEMBLY LENGTH LABEL PLACEMENT: 36 INCHES OR LESS, ONE LABEL APPROXIMATELY CENTERED. LONGER THAN 36 INCHES, TWO LABELS APPROXIMATELY 6 INCHES FROM EACH CONNECTOR.
2. CABLE ASSEMBLIES SHALL BE TESTED FOR CONTINUITY

THE INFORMATION CONTAINED IN THIS DRAWING IS THE SOLE PROPERTY OF INFINITE ELECTRONICS, INC. ANY REPRODUCTION IN PART OR WHOLE WITHOUT THE WRITTEN PERMISSION OF INFINITE ELECTRONICS, INC. IS PROHIBITED. THESE COMMODITIES, TECHNOLOGY OR SOFTWARE WERE EXPORTED FROM THE UNITED STATES IN ACCORDANCE WITH THE EXPORT ADMINISTRATION REGULATIONS. DIVERSION CONTRARY TO U.S. LAW PROHIBITED.

UNLESS OTHERWISE SPECIFIED LEADING DIMENSIONS ARE INCHES DIMENSIONS IN [] ARE MILLIMETERS	
TOLERANCES:	
.X = ±.2 [.5]	FRACTIONS ± 1/32
.XX = ±.02 [.5]	ANGLES ± 1°
.XXX = ±.005 [.13]	CABLE LENGTH TOLERANCES:
	>12 [305] = +1 [25] / -0
	>12 [305] ≤ 60 [1524] = +2 [51] / -0
	>60 [1524] ≤ 120 [3048] = +4 [102] / -0
	>120 [3048] ≤ 300 [7620] = +6 [152] / -0
	>300 [7620] = +5% / -0
ALL DIMENSIONS ARE FOR REFERENCE ONLY AND SUBJECT TO CHANGE WITHOUT NOTICE.	

PE PASTERNAK an INFINITO brand	
Website: www.Pasternack.com Phone: 1.866.727.8376 1.949.261.1920	
INTERPRET ALL DIMENSIONS AND TOLERANCES PER ASME Y14.5	SHEET 1 OF 1
SCALE NONE	
DESCRIPTION SMA Male to SMP Female Cable Using RG405 Coax	
SIZE A	CAGE CODE 53919
DRAWN BY BPUCHASKI	ITEM NO. PE3W13027
REV A	